

Music Therapy

The Key to Health and Wellness

Minneapolis, Minnesota
Hilton Minneapolis Hotel

Sessions — November 20–23, 2003
Meetings — November 18–23, 2003
Institutes — November 19, 2003
CMTEs — November 20–23, 2003



Fifth Annual AMTA Conference

Conference-At-A-Glance

	7:00 am 8:00	9:00 10:00	11:00 12:00 pm	1:00 2:00	3:00 4:00	5:00 6:00	7:00 8:00	9:00 10:00	
Monday November 17		Guided Imagery and Music: Level I Training							
Tuesday November 18		Guided Imagery and Music: Level I Training							
Wednesday November 19		Premature Infants Institute					Chemical Dependency Institute		
	Aging Institute			Guided Imagery and Music: Level I Training					
Thursday November 20	CMTE Courses			CMTE Courses			Opening Session Concert/Party/Silent Auction/ Exhibits Open		
	Guided Imagery and Music: Level I Training					Exhibits open			
Friday November 21	Concurrent Sessions		Exhibit Hall Open				Business Mtg		
	Plenary Session		Exhibit Spectacular		Concurrent Sessions		A Night of Drums		
Saturday November 22	Exhibit Hall Open							Cabaret	
	Concurrent Sessions		Exhibit Spectacular		Concurrent Sessions		Business Mtg		
	Internship Fair		Job Fair		Research Poster Session				
Sunday November 23	Concurrent Sessions		Conf. Wrap up		CMTE Courses				

Table of Contents

Welcome from...	
President of the United States	4
Governor of Minnesota	5
Mayor of Minneapolis	6
Conference Chair	7
Local Arrangements Committee	7
AMTA President	7
General Information	8
Grand Opening Night	10
Robin Spielberg Concert	11
Lifetime Achievement Honorees	12
Special Events	13
Plenary Lecture	13
Mu Daiko	13
Community Drum Circle	13
Conference Wrap-up	13
AMTA Village	14
Job Fair	14
Special Target Populations Networking Session	14
Exhibit Hall	14
A Magical Conference Wrap-Up	15
Jam Rooms	15
International Relations Networking Session	15
Cabaret	15
Research Poster Session	16
Pre-conference Institutes	
Music Therapy and Elderly Persons: Innovative Approaches	18
Music Therapy and Premature Infants	18
Uses of Music and Music Therapy in the Prevention and Treatment of Chemical Dependency	19
CMTE Information	20
CMTE Courses	21
Meeting Schedule	24
Session Schedule	25
Conference Officials	45
Exhibit Hall	46
Exhibitors	47
Acknowledgments	50
Conference Sponsors	51
AMTA's Center Stage	51
Advertisements	52

Greetings From President Bush



THE WHITE HOUSE
WASHINGTON

September 10, 2003

I send greetings to those gathered for the 5th Annual Conference of the American Music Therapy Association (AMTA).

Music enriches lives, stimulates creativity, and expresses the human spirit. It also can have a positive effect on our health and behavior. Through music therapy, individuals improve communication and coordination skills, reduce stress, and improve their lives.

I commend conference attendees for your dedication to helping others through the healing influence of music. I also applaud the AMTA for promoting the benefits of music therapy and increasing access to quality services. Your work brings comfort to many and demonstrates the compassionate spirit of our Nation.

Laura joins me in sending our best wishes for a successful conference.

A handwritten signature in blue ink, appearing to read "George W. Bush".

Greetings From Minnesota Governor



STATE OF MINNESOTA

Office of Governor Tim Pawlenty

130 State Capitol • 75 Rev. Dr. Martin Luther King Jr. Boulevard • Saint Paul, MN 55155

Welcome American Music Therapy Association!

On behalf of the people of Minnesota, I am proud to welcome you to our state for the fifth annual Music Therapy Association Conference being held November 19-22, 2003, at the Hilton Minneapolis. During your visit, I am sure you will find Minnesotans friendly and eager to make your tournament and visit both pleasant and memorable.

Please take time to explore all that our great state has to offer. With its 10,000 beautiful lakes, acres of woods, miles of paths and trails, and lively cities, there's truly something for everyone.

I hope your convention is productive, and that you take time for some fun along the way. You are welcome back in Minnesota any time!

Sincerely,

A handwritten signature in green ink, appearing to read "Tim Pawlenty".

Tim Pawlenty
Governor

P.S. We also boast one of the nation's most beautiful State Capitols. Stop by for a tour if you get a chance.

Voice: (651) 296-3391 or (800) 657-3717

Web site: <http://www.governor.state.mn.us>

Fax: (651) 296-2089

TDD: (651) 296-0075 or (800) 657-3598
An Equal Opportunity Employer

Printed on recycled paper containing 15% post consumer material

Greetings From Minneapolis Mayor



Minneapolis
City of Lakes

Office of the Mayor

R. T. Rybak
Mayor

350 South 5th Street - Room 331
Minneapolis MN 55415-1393

Office 612 673-2100
Fax 612 673-2305
TTY 612 673-3187

November 2003

Welcome to Minneapolis!

It is a great honor for Minneapolis to host the 5th Annual American Music Therapy Association Conference. Visitors find Minneapolis to be an outstanding convention destination. We are truly blessed with many natural resources, including beautiful, scenic lakes, picturesque parks, and, of course, the historic Mississippi River.

While you are meeting here, I hope you have the opportunity to experience the beauty, history and vitality of the "City of Lakes." Along with our many natural resources, elegant shopping, a vibrant arts culture and exciting entertainment, Minneapolis is truly a world-class city renowned for its friendliness.

My best wishes for a successful conference.

Sincerely,

R. T. Rybak
Mayor



www.ci.minneapolis.mn.us
Affirmative Action Employer

Welcome from the Conference Chair

Michelle Hairston, EdD, MT-BC, AMTA Vice President

Welcome to the City of Lakes, Minneapolis and to "Music Therapy: The Key to Health and Wellness". It is with great pleasure that I present to you the final program for the conference. We want music therapy to be "key" for everyone's health and wellness. This conference is designed to encourage your well-being and rejuvenation!



Three Institutes and 26 exciting CMTes begin Wednesday. We think we've come up with a variety of courses that in some way will meet each individual's needs. Don't miss out on this opportunity to get credit for board recertification. In addition, we have over 100 excellent concurrent sessions. Choosing will be difficult, but have fun finding what's interesting to you!

The opening ceremony promises to be an event you won't want to miss. **Robin Spielberg** will enthrall us with an evening of musical storytelling. Immediately afterward, we will be moving to the Exhibit Hall Grand Opening and the Spectacular Silent Auction.

Friday night will be a fabulous night of entertainment with **Mu Daiko** in Concert. You won't want to miss this mesmerizing taiko drumming art based on traditional Japanese styles and techniques. Following this performance will be a conference favorite, the Community Drum Circle with **Christine Stevens**. Saturday is the famous Cabaret and Sunday, our closing session will be led by **Glen Velez** and **Lori Cotler** performing innovative world music.

Again, welcome to Minneapolis! I hope you have a great experience. Don't hesitate to ask questions of any conference volunteers or staff.

Welcome from the Local Arrangements Committee

Amy Furman, MM, RMT, Local Arrangements Chair

On behalf of the planning committee and all the music therapists in Minnesota, welcome to Minneapolis! Since the conference focus is health and wellness, be sure to balance your learning with time to relax with friends, colleagues, and mentors. Our location makes this easy for you. Please stop by the hospitality table to get tips about shopping, restaurants and opportunities for live music, all within walking distance of the hotel. Your choices range from classical performances at the Minnesota Orchestra, jazz at the Dakota, or a short bus ride to shop at the Mall of America. While we cannot guarantee the weather, the Minnesota music therapists will be sure there is a warm and welcoming climate for everyone at the 5th Annual AMTA conference.

Local Arrangements Committee Chair

Amy Greenwald Furman, MM, RMT

Instrument Committee Chair

Todd Schwartzberg, MT-BC

Public Relations/Outreach Committee Chair

Kay Luedtke-Smith, MT-BC

Entertainment Committee Co-Chairs

Bill Webb, MT-BC

Glenn Helgeson, MEd, MT-BC

Volunteer Committee Co-Chairs

Julie Osmonson, MT-BC

Carol Ashwood, MT-BC

Hospitality Committee Chair

Recky Pausch, MT-BC

Student Committee Chair

Bridget Doak, MA,

MT-BC

AMTA

President

Mary Adamek, PhD, MT-BC

On behalf of the AMTA Executive Board, I would like to welcome you to the Fifth Annual AMTA Conference. "Music Therapy: The Key to Health and Wellness." Congratulations on your decision to attend this exciting and stimulating conference! You will have numerous opportunities to re-energize and grow as a professional by attending the various conference sessions offered this year. The outstanding program is comprehensive and diverse, with sessions for every level from beginning student to seasoned professional. Be sure to save time for socializing and networking with friends old and new. You are sure to make long-lasting connections with other professionals and students that will provide years of support and friendship. I hope you experience renewed creativity and passion for music therapy this week at our conference. Discover the latest music therapy approaches, make new personal and professional connections, and have fun. Best wishes for a great conference experience!

General Information

Registration

Conference Registration will be located on the 3rd floor of the Hilton Minneapolis. Please plan to pick up your badge, event tickets, and take care of any other needs during the following open times:

Tuesday, November 18
7:00 pm - 9:00 pm

Wednesday, November 19
7:00 am - 11:30 am
1:00 pm - 5:00 pm

Thursday, November 20
7:00 am - 11:30 am
1:00 pm - 5:00 pm

Friday, November 21
7:00 am - 11:30 am
1:00 pm - 5:00 pm

Saturday, November 22
7:00 am - 11:30 am
1:00 pm - 5:00 pm

Sunday, November 23
7:00 am - 2:00 pm

Cash Food Sales

For a quick and easy way to eat, cash food will be available in the Pre-function Area, 3rd floor.

Thursday, November 20
Lunch - Noon - 2:00 pm

Friday, November 21
Breakfast - 6:30 am - 8:30 am
Lunch - 11:00 am - 2:00 pm

Saturday, November 22
Breakfast - 6:30 am - 8:30 am
Lunch - Noon - 2:00 pm

Sunday, November 23
Breakfast - 6:30 am - 8:30 am

Exhibits

Exhibits will be located on the 3rd floor, Salons A, B, and C. Be sure to catch the Exhibit Hall Grand Opening at 9:30 pm on Thursday, November 20, and the "Exhibit Spectaculars," unopposed exhibit times scheduled for Friday and Saturday. Don't forget to visit the "AMTA Village" including the AMTA Bookstore where you can purchase AMTA products and publications, located on the 3rd floor, Directors Room. Meet elected officers throughout the conference and learn more about your Association and how you can support the music therapy profession. **The Exhibit Hall is open during the following times:**

Thursday, November 20
2:30 pm - 5:00 pm

**Grand Opening Party,
Silent Auction, Reception:**
9:30 pm - 11:00 pm

Friday, November 21
11:00 am - 5:00 pm

Exhibit Spectacular —
11:00 am - 1:30 pm

Saturday, November 22
9:00 am - 4:30 pm

Exhibit Spectacular —
11:00 am - 1:30 pm



Smoking Policy

Smoking is not allowed in the sessions, meeting rooms, the Exhibit Hall or the AMTA Village.

"Ask Me"

Questions about Minneapolis - such as directions to nearby attractions and restaurant information - should be directed to the members of the local committee who will be wearing "Ask Me" buttons. They will be happy to assist you, as will the hotel concierge located in the lobby.

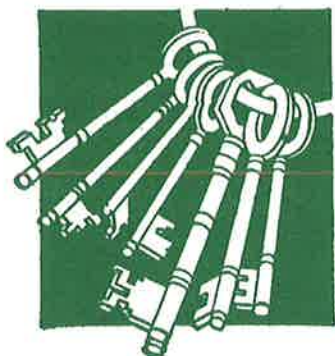
Seating

There is adequate space at the conference for each conference attendee to attend a session at each session time block. However, seating is limited in individual rooms. Please arrive early for sessions you wish to attend to guarantee a seat. Late arrivals disturb the sessions already in progress. Please be courteous if it becomes necessary to enter or leave a session that is underway. We cannot ensure participation in individual sessions so plan to arrive early to insure a seat.

Business Needs

There is a Business Center in the hotel and a Sir Speedy Print Shop a short walk from the hotel for all your photocopying and business needs. Office equipment (such as computers for group work and session preparation) will not be provided on-site, but is available for use at these locations. Please prepare committee business, student groups, and session handouts ahead of time and plan for extra copies as presenters often run out. You are responsible for all costs incurred.

General Information



CMTE Courses

CMTE Courses, which are offered at a low-cost rate in conjunction with the conference, have not increased in cost in four years. To enroll in a CMTE course, you must be registered for at least the day of the conference on which the CMTE is scheduled. Pre-conference Institutes do not require that you be registered for the conference. Continuing Music Therapy Education (CMTE) course information will be available at the Registration Booth during registration hours. Please direct questions about board certification and MT-BC renewal requirements to the CBMT booth, located in the Exhibit Hall.

Speaker Ready Room

For the convenience of presenters, a speaker ready room will be located in the coat room during registration hours. The room will contain audio/visual equipment to help organize presentations.

Press Room

During conference hours, all media representatives are asked to check in at the registration desk.

Services for Persons with Disabilities

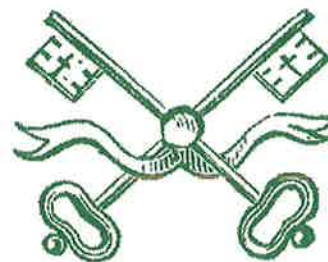
AMTA is committed to ensuring participation for all conference attendees with disabilities. Every attempt has been made for full compliance with the Americans with Disabilities Act. Questions about hotel accessibility should be directed to the front desk of the hotel. Please contact someone at the conference registration desk if you need further assistance. Every effort will be made to ensure satisfactory participation.

A Word About Children and Childcare

Conference sessions and evening events are designed for a professional audience. Children under 10 years of age may not find these events and activities interesting. Please plan accordingly to be considerate of other attendees. If you need childcare, information on local childcare options can be obtained from the Concierge Desk. Conference organizers have not reviewed these childcare facilities and can accept no responsibility for their quality. You are responsible for all payments for these services.

What to Wear

We can guarantee that the temperature in meeting rooms will fluctuate dramatically from hot to cold. We strongly suggest you dress in layers so that you can adjust your apparel for the different meeting room temperatures.



Tickets & Passes for Guests

Evening events are included in the price of registration for all paid conference attendees. Your conference badge will be used as admission for these events. Guest tickets to many special events of interest to your friends and family are available, including a pass to the Exhibit Hall for those not attending the conference may be purchased for your guests at the Conference Registration Desk:

Opening Session — \$35.00

Conference Wrap-Up — \$10.00

Exhibit Hall — complimentary

Entrance to conference sessions is limited to those registered for the conference.

Refund & Cancellation Policy

Refunds for cancellations are available by written request only and must be mailed to the AMTA national office. For details please refer to the refund and cancellation policy printed in the Preliminary Program.

Grand Opening Night



...featuring Robin Spielberg

Don't miss Robin at the Opening Session, in the AMTA Village, and at her session on Saturday, November 22nd at 10:45 am.

Additional tickets for evening events will be available for purchase at the Registration Desk for \$35.00. Dress is business or cocktail attire. All seating will be general admission.

Sponsored in part by Steinway and Sons, Inc., and SPOBS Music, Inc.

Opening Night Festivities

Thursday, November 20, 2003

7:00 pm

A traditional Swedish musical welcome featuring the Twin Cities Nyckelharpalag before the Opening Session begins at 7:30 in the Grand Ballroom.

Post Opening Session Party

9:30 - 11:00 pm

THE PRE-CONVENE AREA JUST OUTSIDE THE GRAND BALLROOM

Unlock the fun of music and the power of community at the post-opening session Party featuring the 2003 Exhibit Hall, the Spectacular Silent Auction, and musical guests, the Augsburg Jazz Combo, from Augsburg College.

Exhibit Hall Grand Opening — SALONS A, B, C

Include shopping on your list of key things to do in Minneapolis! The Exhibit Hall features instruments, sheet music, resources, materials, books, and gifts from around the world for discriminating music therapists. Unique items and conference specials abound!

AMTA Village — DIRECTORS ROW 2

Experience the world of music therapy in the AMTA Village, featuring Club AMTA and the AMTA Bookstore. Meet guest artist Robin Spielberg, autographing her CDs - available in the AMTA Bookstore! Also in the Bookstore, Maureen McGovern's newest release Works of Heart - Songs of Hope featuring "The Morning After."

Spectacular Silent Auction — PRE-CONVENE AREA

Shop 'til you can't find your keys at the Spectacular Silent Auction - and support music therapy! Check out items from our exhibitors, members, and other friends and supporters of music therapy. All proceeds benefit the growth and practice of music therapy throughout the United States, including community outreach, technical assistance, and public education.



Join Us for an
Evening of
Musical
Storytelling at
the Opening
Session with
Special Guest
Artist

Robin Spielberg

Thursday, November 20, 2003

7:30 pm

MINNEAPOLIS GRAND BALLROOM SALONS D, E, F, G

Sponsored in part by Steinway and Sons and SPOBS Music

Nationally renowned pianist and Celebrity Spokesperson for Music Therapy, Robin Spielberg discovered her passion for music as a young girl and began formal piano lessons at age seven. By ten, Robin had composed more than fifty songs. She is, undoubtedly, one of the most expressive contemporary pianists of our time. Her fans and critics often describe her music as emotional, soulful, mesmerizing and touching. Ms.

Spielberg's musical gifts have won her a place among the nation's most respected contemporary pianists, as well as a slot on the prestigious Steinway Artist Roster. Her interest in music therapy began in 1998 when she witnessed first-hand the positive effect music had on her own daughter during a four-month stay in the neo-natal intensive care unit. The CD *Beautiful Dreamer* was the musical result of that experience — a recording of soothing lullabies for parent and child. Ms. Spielberg will perform an opening night concert and participate in a variety of forums throughout the conference.

Lifetime Achievement Honorees

Dr. Alicia Clair

Dr. Alicia Ann Clair, MT-BC has contributed to the advancement of music therapy as a clinician, researcher, and educator, as well as committee member, board member and national and regional officer.



Currently, Dr. Clair is Professor and Director of the Music Therapy Program and Coordinator of Graduate Studies for Music Education and Music Therapy at the University of Kansas. She continues her clinical practice and research interests as Research Associate in Gerontology at KU and at the Colmery-O'Neil Veterans Affairs Medical Center in Topeka, Kansas.

Recognized internationally for her clinical expertise and research in gerontology and wellness, Dr. Clair has published extensively on music therapy practice with persons who have Alzheimer's disease and their professional caregivers, and Music Therapy with persons who are well, older adults. Dr. Clair's book, *Therapeutic Uses of Music with Older Adults*, is a vital resource for music therapists and caregivers alike.

Dr. Clair's dedication to music therapy has been demonstrated through many years of service to the profession including President of the National Association for Music Therapy, and recognized with national awards including the Service Award, the Professional Practice Award, and the Research Award.

For this amazing legacy, Dr. Alicia Clair is awarded AMTA's highest honor, the Lifetime Achievement Award.

Sr.

Donna

Marie

Beck

Sr. Donna Marie Beck, Chair of the Music Therapy Department at Duquesne University, is fittingly recognized today for her service to the American Music Therapy Association on both national and regional levels. Sr. Donna Marie has devoted considerable time and energy to AMTA and the profession of music therapy in countless ways over the span of her distinguished career, including serving as a member of the AMTA Executive Board, the Mid-Atlantic Region of AMTA Executive Board, National Chair of AMTA's Affiliate Relations Committee, as well as mentoring and educating countless music therapy students in over 17 years as a program director and professor of music therapy at Duquesne University.

During her tenure as Chair of the Affiliate Relations Committee, she developed new communicative pathways between the Association for Critical Care Nursing and AMTA. These resulted in a joint satellite broadcast on music therapy in critical care settings. A consummate storyteller, Sr. Donna Marie has served the Mid-Atlantic Region as Treasurer, Historian and Archivist.

We also recognize Sr. Donna Marie Beck for her phenomenological research on the integration of spirituality and guided imagery and music. Her work draws on the work of Adrian Van Kaam involving an integrative framework uncovering foundational truths for daily living. Her research has been published in the *Journal of the Association for Music and Imagery*.



Special Events

Plenary Lecture

“Wearing Two Hats: Personal and Professional Perspectives on Music Therapy and its Implications for Enhancing Individual and Family Quality of Life”

Rud Turnbull, LJM; Ann Turnbull, EdD; J.T. Turnbull

Friday, November 21 SALON D
9:45 am - 11:00 am



Professors Rud and Ann Turnbull have experienced first-hand the effect music therapy has had on their son, J.T. The Turnbuls are co-directors of the Beach Center on Family and Disability at The University of Kansas, and have received national and

international recognition for their work, including being selected by the American Association on Mental Retardation as among 25 individuals who, during the 20th century, contributed the most to enhancing the lives of persons with mental retardation. Additionally, Ann Turnbull was one of three people in the world selected for the Rose Fitzgerald Kennedy Leadership Award. Their consistent advocacy of music therapy has reached far and wide. They are joined in this presentation by their son J.T., who has received music therapy for most of his life. Expect a heartfelt, intimate look at the role of music therapy in their lives, and an uplifting message for all.

A Magical Conference Wrap-Up

Sunday, November 23 SALON D
11:30 am - 12:30 pm

Drum. Voice. Music. Hand drumming mastery meets vocal wizardry as Grammy award-winning percussionist **Glen Velez** joins music therapist **Lori Cotler** to perform an electrifying set of innovative world music. An internationally recognized frame drummer, composer, scholar, and teacher, Glenn Velez, has created his own musical style inspired by both Western percussion and frame drum performance styles around the world.



*A
Delight
of
Drums*

Mu Daiko in Concert
Friday, November 21 SALON D

8:00 pm -
9:00 pm

Taiko drumming dates back to the earliest Japanese communities where it was a part of daily life and rituals. Today, Taiko has become a dynamic performance art form based upon traditional Japanese styles and techniques. Join us as Theatre Mu presents Japanese drumming with **Mu Daiko**.



Community Drum Circle

Friday, November 21 SALONS E, F, G
9:00 pm - 10:30 pm

A conference favorite. Join **Christine Stevens** as she brings us together in a unique rhythmic experience that transcends language and cultural barriers. Energizing, spontaneous, fun, creative, and synergizing for body, mind, and spirit. Sponsored by Remo, Inc.



Special Events

The AMTA Village

Visit the AMTA Village for the latest association information and resources. The Village will feature the AMTA Bookstore - stocked with the newest music therapy publications and a variety of respected standards, as well as music therapy products and mementos you won't want to miss out on. Come by the the Village to shop the Bookstore, meet with association officials in the Club AMTA, pick up information on member-exclusive programs, and relax and talk with friends.

*Job
&
Internship
Fairs*

**Saturday,
November 22**
SALON E
10:45 am - 12:30 pm

Open to all conference attendees, these special sessions offer unique networking opportunities for students and professionals.

New this year, AMTA is sponsoring a Job Fair to provide networking opportunities for employers and employees. Employers: bring posters, information on your facility, and notices of job openings, and prepare to meet with music therapists from across the country.

If you are looking for a job: bring copies of your resume, business cards, and be ready to network!

The internship fair will feature internship site displays from across the country, and internship directors will be available to speak with students about their programs.

*Special
Target
Populations
Networking
Lunch*

Friday, November 21
SALON D, BALLROOM FOYER
11:00 am - 1:15 pm

Do you want to have input into defining/advertising/advocating for music therapy in your arena of work? Make plans now to attend the Special Target Populations Networking lunch. This is your opportunity to define your needs and what you do, to develop a network of resources and support, to share ideas, and to review research and techniques/methods. Cash lunch will be served close by, so grab some food and be prepared to help shape and support the music therapy profession via this grass roots effort.

The Exhibit Hall

The Exhibit Hall is your key to new and exciting products as well as familiar favorites. Take advantage of over 17 scheduled exhibit hours including 5 hours of unopposed *Exhibit Spectacular* time. On Friday and Saturday from 11:00 am-1:30 pm, no sessions compete with exhibits, so you'll have plenty of time to explore. This is your opportunity to purchase products/materials for use in your work, for your pleasure, and to speak with company representatives about product development. The first official conference activity begins on Thursday afternoon when the exhibit hall opens from 2:30 pm-5:00 pm. On Thursday evening following the Opening Session, the conference kicks off with a fun filled evening featuring the Grand Opening of the Exhibit Hall and Silent Auction with a special reception and musical guests.

Special Events

Glen Velez in a Magical Conference Wrap-Up

Sunday, November 23 SALON D 11:30 am - 12:30 pm

Don't miss internationally recognized hand drumming master Glen Velez and "scat singer" music therapist Lori Cotler for an electrifying concert of innovative world music. Glen has created his own musical style inspired by Western percussion and frame drum performance styles from around the world. In collaboration with Lori, Glen just released a new CD "Elephant Hotel" of all new drum and voice compositions of world music. Hand drumming mastery meets vocal wizardry! Copies will be on sale at the closing session.

Come early to purchase this exciting new recording for your music library!

Jam Rooms

Rooms have been reserved for open jam sessions after the evening events. Bring your talent, an instrument or just come to listen and enjoy with your friends and colleagues. Some instruments will be provided at select times.

Thursday, November 20
Percussion, Folk/Acoustic and Electric Jam Room
ROCHESTER
11:00 pm

Friday, November 21
Folk/Acoustic and Electric Jam Room
ROCHESTER
10:30 pm

The Cabaret

Saturday, November 22
CARVERS RESTAURANT
9:00 pm - midnight

Start spreading the news! Share your talents and your views! Come join the Cabaret! Local musicians Bill Webb and Glen Helgeson will keep things moving as you provide the talent! Located in Carvers Restaurant on the Lobby level of the hotel, everyone is invited to stop by anytime to enjoy the show. Participants are asked to sign up to guarantee a performance time at the registration booth for the opportunity to strut your stuff! Make sure to be heard — sign up early and perform with the best and brightest of your music therapy colleagues.

International Relations Networking Lunch

Saturday, November 22
ROCHESTER
12:15 - 1:15 pm

Welcome to international students, professionals, and guests interested in international music therapy issues! The IRC invites you to attend the **International Relations Networking Lunch** to foster relationships and help make international participants' experience an enriching one. Learn what our international guests think and explore ways we can foster positive experiences for people from all countries. Purchase lunch at Cash Food Sales, then come by. Committee members will facilitate collaborative dialogue between music therapists around the world.

Research Poster Session

The Research Poster Session showcases current music therapy research from around the world. Each presenter will have an exhibition area, and attendees are free to wander about sampling studies of choice with the opportunity for informally meeting the authors and discussing their research with them. Graphs, figures, and tables will be displayed, with handouts available.

Saturday, November 22

1:30-3:30 pm

GRAND SALON E

Research Poster Session Presentations:

The Effects of Rhythmic Strength on Memory Recall

Alpha Mu Alpha (Tallahassee, FL)

Music Therapy in the Neonatal Intensive Care Unit: A Multi Site Study

Kathleen A. Bailey and Debbie Bates (Akron, OH)

The Prevalence of Ear Plug Usage Among College Students

Danielle Boiardi and Kristin Hjeltnes (New Paltz, NY)

Survey on Music Therapy and Autism

Ann Bolger (Webster, NY) and Kathleen Gubelman (Shirley, NY)

A Comparison of Movement-to-Music, Rhythm Activities, and Competitive Games on Stress and Anger of Female Clients in Substance Abuse Rehabilitation

Andrea Cevasco, Roy Kennedy and Natalie Generally (Athens, GA)

The Effect of Composition (Art or Music) on the Self-Concept of Hospitalized Children

Cynthia Colwell, Kathy Davis and Linda Schroeder (Lawrence, KS)

A Survey of Self-Assessed Music Performance Anxiety in Performing Musicians

Tetiana Cymbal, Efsthathia E. Gletcos and Hilary Lynch (Hyde Park, NY)

The Effect of Preferred Music as a Distraction on Task Concentration

Alicia Ann Darrow (Tallahassee, FL) Christopher Johnson, Shawn Agnew and Erin Rink (Lawrence, Kansas)

The Effects of Vocal Improvisation on Mood

Alexis Geib and Jennifer L. Janson (King of Prussia, PA)

University Student Perceptions of an Arts in Medicine Service Learning Course

Dianne Gregory (Tallahassee, FL)

The Effect of Music and Suggestion on Defensive Driving Responses of High School Students

Robert W. Groene and Steve Barrett (Kansas City, MO)

The Benefit of a Multi-Sensory Environment in a Music Therapy Setting with Adults with Special Needs

Gina D. Hacker and Adrienne James (Clear Lake, IA)

The Effects of a Laban-Based Movement Program with Music on Measures of Balance and Gait in Older Adults

Janet Hamburg and Alicia Ann Clair (Lawrence, KS)

The Effect of Continuous Modulating Pitch Center in Samuel Barber's Violin Concerto No. 2 on Self-Perception of Aesthetic Experience among Musicians and Non-Musicians

Carl B. Hancock (Tucson, AZ)

An Analysis of Final Music Therapy Sessions Among Hospice Patients

Russell E. Hilliard (New Paltz, NY)

A Survey on the Relationship between Music Therapy Experiences and Bereavement: A Program Evaluation

Fu-Nien Hsieh and Charles Furman (Minneapolis, MN)

Learning from All Disciplines: A Review of Literature on Autism with Transfers to Music Therapy

Judith A. Jellison, Stefanie N. Anderson and Laurie Scott (Austin, TX)

Talking with Teachers about Inclusion: Perceptions, Opinions, and Experiences

Judith A. Jellison and Laurie Scott (Austin, TX)

An Analysis of Music Therapy Program Goals and Outcomes for Clients with Diagnoses on the Autism Spectrum

Ronna S. Kaplan and A. Louise Steele (Cleveland, OH)



Research Poster Session

Categories of Musical Preference among People who Exercise Regularly

Melanie Kaufmann and Asha Shaw (Ridge, NY)

The Effect of Therapist versus Subject-Selected Music on the Relaxation Response during Progressive Muscle Relaxation

Marianne E. Kuncewicz and Sister Mariam Pfeifer (Scranton, PA)

The Effects of Music and Subdermal Electric Stimulation as a Diagnostic Method

Furnio Kuribayashi (Aichi, Japan)

Music and Salivary Immunoglobulin A (SIGA): A Critical Review of the Research Literature

Tzu-Ching Lu (Philadelphia, PA)

The Effect of Selected Music on Perceived Exertion, Plasma Lactate, and Cardiovascular Hemodynamics during Treadmill Walking

Kathleen A. Lyons (Downington, PA) and Sister Mariam Pfeifer (Scranton, PA)

Estimated Number of Individual Melodies Known by Undergraduates and Graduate Students in Music Therapy

Clifford K. Madsen and John M. Geringer (Tallahassee, FL)

Effects of Simultaneous Modeling on Singing Pitch Accuracy of Pre-Service Classroom Teachers

Randall S. Moore (Eugene, OH)

Experiential Learning: Student Views

Kathleen M. Murphy (Philadelphia, PA)

Music Therapy Students' Attitudes Toward Prospective Clientele: Socio-Cultural Issues and Implications- A Pilot Study

Varvara Pasioli (Cleveland Heights, OH), Alice Ann Darrow (Tallahassee, FL) and Elena Papanastasiou (Nicosia, Cyprus)

Attitudes and Perceptions of Elementary and Middle/High School Teachers in Cyprus Regarding Ability to Help and Educate Students with Socio-Emotional and/or Special Needs

Varvara Pasioli (Cleveland Heights, OH) and Elena Papanastasiou (Nicosia, Cyprus)

Assessment of Therapeutic Effects of Harp for Patients on Ventilator Support

Jacque Petroni and Lee Anna Kasar (Eau Claire, WI)

Assessment of Effects of Musical Respiratory Interventions for Patients on Ventilator Support

Jacque Petroni, Susie Sundry, Sara Ries and Lee Anna Kasar (Eau Claire, WI)

The Effects of Music Therapy on Pediatric Patients' Pain and Anxiety during a Painful Procedure

Annette Pleau (Boston, MA)

Quantitative Research in the Journal of Music Therapy: A Descriptive Retrospective

Carol A. Prickett (Tuscaloosa, AL)

The Effects of Live Music Groups Versus an Educational Children's Television Program on the Emergent Literacy of Young Children

Dena Register (Lawrence, KS)

Summary of Children's Song Preferences

Susan Rogers (Cold Spring, NY) and Julien Valenstein (Woodstock, NY)

Music Therapy Support Groups for Cancer Patients

Mary H. Rykov (Toronto, Ontario)

Evaluating the Immediate and Short-term Effects of Different Music Therapy Interventions on People with Mental Illness

Michael J. Silverman and Michael J. Marcionetti (Austin, TX)

Making Music on the Road to Wellness: Tamra's Story, Music Therapists' Challenge

David S. Smith (Kalamazoo, MI)

A Cost/Benefit Analysis of a Comprehensive Medical Music Therapy Program with Arts in Medicine Component

Jayne M. Standley and Darcy Walworth (Tallahassee, FL)

Effect of Field Experiences on Music Therapy Students' Perceptions of Music for Geriatric Wellness Programs: A Pilot Study

Kimberly VanWeelden and Jennifer Whipple (Tallahassee, FL)

Music as a Focus of Attention during Distraction Conditions: A Study with Young Children

David E. Wolfe and Laura K. Noguchi (Stockton, CA)

Motivators for Children with Severe Intellectual Disabilities in the Self-Contained Classroom: A Movement Analysis in Comparing Responses to Switch-Activated Toys, Recorded Music, and Music Therapists

Melissa C. Worden (Marietta, GA) and Jennifer K. DeBedout (Burlington, VT)

Predicting Enjoyment of Music from Memory and Samples

Annette H. Zalanowski and Valerie N. Stratton (Altoona, PA)

Pre-Conference Institutes

Music Therapy and Elderly Persons: Innovative Approaches

Lisa Jackert, MA, MT-BC; Robin Rio, MA, MT-BC

Wednesday, November 19 SALON G

8:00 am – 3:00 pm

6 CMTE Credits

Cost \$110

Due to the rapid growth of the older adult population, many music therapists are interested in working with this population. This Institute is designed to provide practical music therapy approaches and techniques presented in an experiential format. Information presented will be beneficial to music therapists who are considering working with older persons, as well as those who are in need of new ideas and creative inspiration. Experienced music therapists will share time-tested “tricks of the trade” music therapy interventions for the following populations:

- frail elderly, persons with Alzheimers' or related Dementias
- well-older adults
- intergenerational groups
- mixed adult and geriatric populations in acute psychiatric settings
- residents of long term care settings
- individuals with developmental disabilities



The Institute will provide:

approaches for working with groups
use of various music therapy techniques:
percussion improvisation, theme-oriented
sessions, song-writing techniques,
music and movement, group and solo
singing/performance

Speakers include:

Bobbi Adler, MT-BC;
Jennifer Geiger, MA, MT-BC;
Lisa Jackert, MA, MT-BC;
Carna Manthey, MT-BC;
Robin Rio, MA, MT-BC;
and Katherine Schellin,
MT-BC



Music and Infants

This Institute will train music therapists in the necessary information and competencies for work in Neonatal Intensive Care Units. This clinical area is one of the newest in the field and deals with very fragile individuals and their families. Untrained and undocumented interventions are contraindicated; however, basic information about premature infant needs is not a usual component of the education of music therapists. Seven hours of education covering the topics of embryonic development, NICU environmental issues, needs and assessment of the premature infant, status of research and recommendations for NICU clinical practice, and counseling NICU parents will be provided. Participants will be given documentation of their extended training in this specialty area.

Jayne M. Standley, PhD, MT-BC
Jennifer Whipple, MM, MT-BC

Speakers include:

Jayne M. Standley, PhD, MT-BC;
Jennifer Whipple, MM, MT-BC;
Deanna Hanson Abromeit, MA, MT-BC;
and Robin Spielberg and Larry Kosson

Pre-Conference Institutes

Uses of Music and Music Therapy in the Prevention and Treatment of Chemical Dependency

Ted Ficken, PhD, MT-BC, CPHQ

Wednesday, November 19

3:30 pm – 10:30 pm

6 CMTE credits

\$110

SALON G



This Institute brings together a distinguished panel of authors, researchers, and clinicians who have explored the integration of music into a variety of addiction settings. Participants will learn about theoretical models, available resources, supporting literature and research, clinical applications, and personal challenges. The Institute will conclude with a wrap-up session with the full panel answering questions and discussing future directions. Participants will receive a resource notebook containing a variety of items from the institute and are encouraged to bring their own resources to share with other attendees.

The Institute will provide:

Information on neurological development and maturation in the third trimester

Overview of problems and needs of premature infants

Neonatal Intensive Care Unit (NICU) protocols for interacting with premature infants

Assessment of medical and music therapy objectives

Music therapy NICU research results and clinical applications

Recommendations for early intervention music therapy objectives and activities during the first year of life of premature infants

This Institute will provide:

Examination of the integration of music therapy with chemical dependency treatment models

Overview of the literature related to music therapy with chemically dependent individuals

Sharing of treatment resources/techniques for use with chemically dependent individuals

Discussion of the role of the Bonny Method of GIM in the recovery process

Exploration of the uses of music to address spirituality with the recovery process

Presentation and discussion of case studies from clinical practice

Speakers Include:

Jim Borling, MM, MT-BC, FAMI;

Ted Ficken, PhD, MT-BC, CPHQ;

Wilfred Gallant, EdD, MSW;

Harold Owens, MusicCares;

Rick Soshensky, MA, CMT, NRMT;

Jude Treder-Wolff, CSW, RMT;

and Joey Walker, MA, MT-BC



Wednesday, November 19

SALON E

10:00 am – 6:00 pm

7 CMTE credits

Cost \$160 (includes text valued at \$50)

CMTE Information

*Edward Gallagher, MTC-BC and Christine Routhier, MA, LMHC, MTC-BC
Co-chairs, AMTA Continuing Education Committee*

The AMTA Continuing Education Committee would like to clarify some of the continuing education options available at this conference. Participants can earn five CMTE credits for attending this Conference. CMTE credit is offered for attendance at AMTA Conferences, as AMTA is a pre-approved provider of Continuing Music Therapy Education activities. CBMT Guidelines state that an individual can earn five of this type of CMTE credit per conference with a maximum of fifteen CMTE credits per five year cycle.

Twenty-six intensive workshops and three Pre-conference Institutes are being offered this year, which are pre-approved by the CBMT. Registrants will receive a certificate indicating completion of each learning experience. According to CBMT guidelines, members choosing this option will need only their certificate for documentation; no summary is required. It is mandatory that you arrive on time and stay for the entire length of each course for credit.

Umbrella groupings can be combined using some of the workshops at this conference. Umbrella groupings are “a group of related workshops, courses, and programs, each fewer than five contact hours, which can be incorporated under a theme or unifying topic relating to the Examination Content Outline and results in a total of at least five contact hours in duration” (pg. 26 Recertification Manual). Eligibility for this type of educational activity requires documentation from the participant. Umbrella groupings must be completed within a 12-month period. These are not pre-approved activities.

Short event activities are any sessions at this conference which are fewer than five (5) contact hours of learning activity. In this category, up to 15 CMTE credits per five-year recertification cycle will be allowed by the CBMT. Documentation is a certificate or other proof of attendance at the event. It is up to the individuals to monitor their limit. These are not pre-approved activities and AMTA is not responsible for the participant’s choice of short event activities.

Documentation Required for Non-Pre Approved Education Programs and Umbrella Groupings:

1. Activity Title
2. Sponsor (AMTA in this instance)
3. Name of Instructor(s)
4. A written summary of the learning experience and its application to music therapy practice and the Examination Content Outline (approximately 250 words)
5. A copy of the conference brochure for the activity
6. Proof of attendance
7. Number of contact hours in each session.
8. Umbrella groupings must list the unifying topic, session titles, date(s) and instructor(s) for each session.

If you have any questions regarding the AMTA continuing education activities at this conference, please contact the co-chairs, Edward Gallagher or Christine Routhier. If you have questions regarding the recertification process or accumulation of CMTE credits, contact the Certification Board for Music Therapists at 1-800-765-CBMT. CBMT is ultimately the authority on CMTE requirements for recertification. You are responsible for gathering documentation of your continuing education credits so remember to pick up your CMTE certificate after each CMTE course and your conference attendance certificate at the close of the conference.

CMTE Courses

Thursday, November 20
7:30 am - 12:30 pm

A. Let's Start at the Very Beginning: The Basics of Music Therapy Assessment

Kristen Chase, MM, MT-BC

From examining the reasons for music therapy assessment to creating an original assessment tool, this session will provide attendees with the opportunity to return to the basics and discover the what, why, and how of the music therapy assessment process.

B. The World of Drumming: Basics of Rhythm and Drumming and it's Applications in Music Therapy

John Scalici

This workshop will introduce basic hand drumming techniques and tools for successfully incorporating rhythm-based activities in music therapy practices. The course will cover world percussion instruments and the art of spoken syllables to develop a sense of rhythm. Drums will include frame drum, tabla, conga, djembe, tambourine, talking drum, bongos, and others. *Sponsored by Remo, Inc.*

D. Clinical Interventions Using Tone Bars and Pitched Percussion in Active Treatment

Laurie A. Farnan, MMTC, WMTA, MT-BC; Jane M. Meyer, RMT, Michelle L. Schumacher, MSE, WMTA, RMT

The purpose of this workshop is to demonstrate the versatility of tone bars and pitched percussion instruments (xylophones, metalophones) in a live music treatment setting. Utilizing these instruments, therapists and support staff can have more flexibility providing multi-sensory interventions

designed to increase sensory processing, promote relaxation, and support improvisation. *Sponsored by HSS, Inc., Hal Leonard Publications and West Music.*

E. Training in Group Clinical Improvisation as a Music Psychotherapy Methodology: Insight & Process Oriented Therapy Levels

Susan C. Gardstrom, MA, MT-BC; James M. Hiller, MMTC, MT-BC

This presentation will focus on knowledge and skills essential for treatment at the level of insight and process-oriented music therapy. Through instruction and participation as a learning/peer supervision group, participants will learn and implement procedures for designing, guiding, and processing group improvisation experiences. Basic concepts of the Improvisation Assessment Profiles will be presented. This presentation is applicable to clinicians who currently possess fundamental skills and knowledge in facilitating improvisation experiences at the supportive music therapy level.

F. Understanding Dementia "101" and Adding Children to Incorporate Music Therapy-Based Intergenerational Fun

Catherine J. Connoley, MT-BC; Katherine J. Schellin, MT-BC

This course will provide an overview of the symptoms and treatment of dementia, and how this information relates to the goal of creating effective music therapy treatment models. Communication techniques, inclusion of family members, and intergenerational activities will be discussed.

G. The CREATE Concept: An Interdisciplinary Approach to the Management of Individuals with Parkinson's Disease

Joan Gardner, RN, BSN; Sandra L. Holten, MT-BC; Marjorie Johnson, MA-CCC-SLP; Rick Vandendolder, OTR; Sandra Varpness, BSW; Maria Walde-Douglas, PT; Rose Wichmann, PT

Designing care plans for people with Parkinson's disease (PD) can be challenging. In this presentation, participants will learn about primary symptoms of Parkinson's disease, music therapy interventions to address symptoms of PD, the roles of other multidisciplinary team members, and how music therapists can partner with them in the management of PD.

H. The Long and Winding Road: The Music Therapy Process through Longitudinal Case Studies

Ronna S. Kaplan, MA, MT-BC

Four longitudinal case studies with clients diagnosed with autism and other developmental disabilities will be discussed. Steps taken to initiate changes in session type, format, and/or interventions/protocols due to progress or lack thereof will be analyzed. Videotaped examples, demonstration, audience participation, and discussion will be utilized to illustrate various techniques in the music therapy process.

I. The Art of Gentle Heart Massage: Five Fingerpicking Gems for Guitar

Robert Groene, JJ, PhD, MT-BC

Participants will learn guitar fingerpicking styles for five songs: *Puff* (Peter, Paul, & Mary), *Don't Think Twice, It's All Right* (ibid.), *Blackbird* (The Beatles), *Scarborough Fair* (Simon & Garfunkle), and *You Can Close Your Eyes* (James Taylor). Prerequisites: Beginning guitar skills. Bring a guitar capo.



CMTE Courses

J. Internship Development and Supervision

Holly T. Baxter, MTC-BC; Kimberly A. Bell, MTC-BC; Mavis N. Mahlberg, MA, MTC-BC; Theresa M. McManus, MTC-BC; Sally Ann Shaffer, MA, MTC-BC; Mary C. Stryck, MTC-BC

This course reviews the National Roster Internship Guidelines and application process, the AMTA Professional Competencies as a foundation for training, and basic internship supervision strategies. It fulfills the supervision training requirement for National Roster Internship Directors but is open and applicable to all music therapy internship supervisors. No charge for this course for qualified AMTA members.

K. The Use of Music Therapy in Pain Management

Katy Bond, RN; Piper D. Laird-Riehle, MM, MTC-BC; Tracy A. Leonard-Warner, MTC-BC

This presentation will explore pain, the under-treatment of pain, theories regarding the pathophysiology of pain, the components of a pain assessment, and the use of music therapy as a non-pharmacological intervention for pain. A database used to track patients, interventions, and outcomes will be presented.

L. A Nordoff-Robbins Based Approach for Guitar

Rick Soshensky, MA, CMT

This course will highlight the use of guitar in Nordoff-Robbins music therapy. Video excerpts will review and analyze key aspects of this modality. Approaches to various modes, scales, intervals, and styles will be covered. Participants will learn musical techniques, discuss clinical application and rationale, and develop new resources for utilizing the guitar in practice.

Thursday, November 20
1:30 pm - 6:30 pm

M. Kids Can Listen, Kids Can Move (Kids Can Sing and Play too!)

Lynn Kleiner

This workshop presents materials that encourage children (adults with disabilities) to respond through movement, singing, and playing. Classical music, stories, instruments, props, and other joyful methods that capture children's attention will be showcased. *Sponsored by Remo, Inc.*



N. Music Therapy in Cyberspace: Web-based Introduction to Music Therapy via Blackboard® 5.5

Chih-Chen Lee, MA, MTC-BC

This presentation will walk the audience through the rationales of course design, the inclusion of course contents, useful elements of pedagogical techniques and educational technology, and suggestions for future development of Music Therapy Distance Education (MTDE).

O. Music Therapy in Integrative Medicine

Suzanne B. Hanser, EdD, MTC-BC; Deforia Lane, PhD, MTC-BC; Lucanne Magill, MTC-BC; Concetta M. Tomaino, DA, MTC-BC

Integrative medicine is an area that is incorporating music therapy services. Music therapists are required to define their roles within integrative medicine and be able to describe, document, and research clinical work in this field. This course provides a forum in which clinical models, service approaches, research, and professional issues will be discussed.

P. Increasing Clinical Guitar Skills

Robert E. Jordan, Jr., MA, MTC-BC

This course is designed to increase and enrich harmonic, rhythmic, and stylistic clinical guitar accompaniment skills. It includes expanding chord vocabulary by adding inversions, different voicings, and more colorful chords. It also includes the exploration of stylistic patterns, riffs, and bass runs within blues, folk, and ballad idioms.

Q. Appalachian Dulcimer: How to Play It and Use It in Your Clinical Practice

Judy R. Belland, MCAT, MTC-BC; Edith M. Merlino, RMT

Participants will learn beginning and intermediate techniques on this versatile, easy-to-play instrument. Workshop leaders will provide experiential examples of ways the dulcimer may be incorporated into music therapy practice. Participants are asked to bring a dulcimer, if possible.

R. The Art of Selling: Business Basics for Music Therapists

David W. Luce, PhD, MTC-BC

Effective selling--meeting customers' needs through the exchange of goods or services--lies at the heart of

CMTE Courses

successful business practice in contemporary health care. Learn basic steps to successful selling and practice applying those steps to your situations through role-playing exercises.

S. Individuals with Severe Disabilities: Music Therapy Strategies that Make a Difference

Kathleen Coleman, MMTC, MT-BC; Catherine D. Knoll, MT-BC

Learn dozens of strategies proven to maximize the therapeutic experience for children and adults with very limited abilities. Presenters have over fifty years combined clinical experience developing relevant assessments, target objectives, utilizing augmentative communication devices, facilitating active music-making, and documenting progress, even in the case of individuals with deteriorating conditions.

T. Stories, Myths and Music Therapy: Clinical Interventions

Ronald M. Borczon, MM, MT-BC

This didactic and experiential workshop will allow participants to experience music and story telling as a clinical intervention. Discussion will revolve around the telling of the story, aspects of the characters, analytical interpretation, and the use of music. Story telling and its relationship to the psyche will also be explored.

U. Hospice Music Therapy: A Guide to Creating First-Time Programs and Meeting Clinical Needs

Russell E. Hilliard, PhD, LCSW, MT-BC

This presentation will explain the valuable role music therapists play in hospice and palliative care. Identifying hospices that could support full-time music therapy

programs, developing first-time programs, and implementing and maintaining strong programs will be explained. Surveys of hospice administrators will be presented to illustrate unique ways music therapists can market themselves and the profession.



Sunday, November 23
1:30 pm - 6:30 pm

V. The Process of Reimbursement

Judy Simpson, MHP, MT-BC; Molly Waldrup-Johnson, MT-BC

When clients request that you bill their insurance company for payment of music therapy services, do you know what to do? This presentation will outline the steps necessary to pursue third party payment when these requests are received. Specific information about case management, diagnostic and procedure codes, and billing forms will be discussed.

W. Simple Practical Guitar Styles: Tailor Your Style to Your Clients' Musical Preferences

Allison Kerr, MT-BC

Tired of that old folk strum? Want to identify with your clients' musical tastes more authentically on guitar? Know ten chords? This presentation will focus on right hand guitar strumming techniques that will provide you with a multitude of new guitar styles to relate with your clients more closely.

X. Improvisation on a Theme: The Challenges of Research in Clinical Practice

Suzanne B. Hanser, EdD, MT-BC; Susan E. Mandel, MEd, MT-BC

This workshop will present the methodology and challenges of conducting research in a clinical setting. An ongoing research study is presented as a protocol. Participants may bring their own research questions for discussion. The objective of the workshop is to foster further clinical music therapy research.

Y. Using Dance/Movement Therapy to Enhance Music Therapy Groups

Kathryn J. Larson, MA, ADTR, MT-BC; Barbara Nordstrom-Loeb, CMA, MFA, ADTR; Molly J. Richter, MT-BC; Bill E. Webb, MT-BC

Using Dance/Movement Therapy (DMT) structures and Laban Movement Analysis (LMA) to develop and deepen experiences that occur during music therapy groups can enhance the healing process. Participants will learn and practice relevant LMA concepts, movement/dance structures, and group improvisational processes as applicable to music therapy.

Z. Exploring Entrainment Beyond Stimulative/Sedative Music: The USE MEE Model

Judith A. Pinkerton, MT-BC

The USE MEE™ Model further expands the iso-principle and entrainment mechanism, spreading stimulative and sedative music into three mood classifications utilizing unique assessments. Fifteen years of research, development, and case studies reveal benefits for populations including alcohol/drug abuse, rehabilitation, teens, geriatric, mood disorders, medical, and emotional/behavioral disorders.

Meeting Schedule

Tuesday, November 18, 2003

3:00 pm - 9:00 pm Executive Board

Wednesday, November 19, 2003

8:00 am - 10:00 am Executive Board
 8:00 am - 6:00 pm Association Internship Approval
 8:00 am - 6:00 pm Academic Program Approval
 2:00 pm - 6:00 pm Professional Advocacy
 2:30 pm - 7:30 pm Education & Training Advisory Board
 3:00pm - 4:00 pm Joint Academic Program & Internship
 4:00 pm - 7:00 pm AMTAS Officers
 6:00 pm - 8:00 pm Membership
 6:00 pm - 8:00 pm Reimbursement
 6:00 pm - 8:00 pm Special Target Populations
 6:00 pm - 8:00 pm Standards of Clinical Practice
 7:00 pm - 9:00 pm Regional Presidents
 7:00 pm - 10:00 pm Ethics Board
 7:00 pm - 10:00 pm AMTAS Executive Board
 8:00 pm - 10:00 pm Council Coord. and Committee Chairs

Thursday, November 20, 2003

8:00 am - Noon Executive Board
 8:00 am - Noon Academic Program Approval
 8:00 am - Noon Employment & Public Relations
 8:00 am - Noon Standards of Clinical Practice
 8:00 am - Noon Special Target Populations
 8:00 am - Noon Affiliate Relations
 8:00 am - Noon Government Relations
 8:30 am - Noon Professional Advocacy
 8:30 am - 12:30 pm SAAB
 9:00 am - 11:00 am International Relations
 9:00 am - Noon Ethics Board
 10:00 am - Noon Continuing Education
 11:00 am - Noon Joint Academic Program Approval,
 Association Internship Approval & International Relations
 12:45 pm - 2:00 pm Research
 1:30 pm - 5:30 pm Assembly of Delegates
 3:00 pm - 5:00 pm AMTAS Executive Board
 5:30 pm - 6:30 pm .. Music Therapy Perspectives Editorial Board
 5:30 pm - 7:00 pm Regional Executive Board - Great Lakes
 5:30 pm - 7:00 pm Regional Executive Board - Mid-Atlantic
 5:30 pm - 7:00 pm Regional Executive Board - Midwestern
 5:30 pm - 7:00 pm Regional Executive Board - New England
 5:30 pm - 7:00 pm Regional Executive Board - South Central
 5:30 pm - 7:00 pm Regional Executive Board - Southeastern
 5:30 pm - 7:00 pm Regional Executive Board - Southwestern
 5:30 pm - 7:00 pm Regional Executive Board - Western



Friday, November 21, 2003

7:30 am - 9:30 am Assembly of Delegates
 9:30 am - Noon Membership
 11:00am - 1:15pm... Special Target Populations Networking Lunch
 12:15 pm - 1:30 pm Reimbursement
 12:15 pm - 1:30 pm Affiliate Relations
 12:15 pm - 1:30 pm Continuing Education
 12:15 pm - 1:30 pm Judicial Review Board
 12:15 pm - 1:30 pm Employment and Public Relations
 12:15 pm - 1:30 pm Ethics Board
 12:15 pm - 1:30 pm International Relations
 12:15 pm - 1:30 pm Professional Advocacy
 12:15 pm - 1:30 pm Standards of Clinical Practice
 12:15 pm - 1:30 pm .. Journal of Music Therapy Editorial Board
 1:30 pm - 3:30 pm Development Advisory Committee
 1:30 pm - 4:45 pm Education & Training Advisory Board
 1:30 pm - 4:45 pm Membership
 5:00 pm - 6:00 pm AMTA Business Meeting
 5:00 pm - 6:30 pm AMTAS Business Meeting

Saturday, November 22, 2003

8:00 am - 9:15 am Regional Meeting – Great Lakes
 8:00 am - 9:15 am Regional Meeting – Mid-Atlantic
 8:00 am - 9:15 am Regional Meeting – Midwestern
 8:00 am - 9:15 am Regional Meeting – New England
 8:00 am - 9:15 am Regional Meeting – South Central
 8:00 am - 9:15 am Regional Meeting – Southeastern
 8:00 am - 9:15 am Regional Meeting – Southwestern
 8:00 am - 9:15 am Regional Meeting – Western
 9:30 am - 11:00 am Executive Board
 11:15 am - 1:15 pm Assembly of Delegates
 12:15 pm - 1:15 pm Internat'l Relations Networking Lunch
 1:30 pm - 5:15 pm Education & Training Advisory Board
 5:30 pm - 6:30 pm AMTA Business Meeting
 5:30 pm - 6:30 pm AMTAS Business Meeting

Sunday, November 23, 2003

7:00 am - 8:00 am ... Assembly of Delegates-Elect (2004-2005)
 9:45 am - 11:30 am Executive Board

Session Schedule — Monday — Wednesday

Monday, November 17

9:00 am - 7:00 pm

ROCHESTER

Personal Journey through Music and Imagery (Level I Guided Imagery and Music Training)

Presenter(s): *Frances Smith Goldberg, MA, MT-BC; Lisa R. Sumner, MEd, MT-BC*

Pre-registration and fee required.

Contact: *Lisa R. Sumner, MEd, MT-BC, 15 Brewster Rd, Worcester, MA 01602*

8:00 am - 6:00 pm

DIRECTORS ROW 1

Academic Program Approval Committee

8:00 am - 6:00 pm

BOARD ROOM 2

Association Internship Approval Committee

9:00 am - 7:00 pm

ROCHESTER

Personal Journey through Music and Imagery (Level I Guided Imagery and Music Training)

Pre-registration and fee required.

2:30 pm - 7:30 pm

CONRAD A

Education and Training Advisory Board

3:30 pm - 10:30 pm

SALON G

Uses of Music & Music Therapy in the Prevention and Treatment of Chemical Dependency

Presenter(s): *James E. Borling, MM, MT-BC; Ted Ficken, PhD, CPHQ, MT-BC; Wilfred Gallant, EdD, MSW; Rick Soshensky, MA, CMT; Jude Creder-Wolff, CSW, RMT; Joey Walker, MA, MT-BC*

Pre-registration and fee required.

Contact: *Ted Ficken, PhD, CPHQ, MT-BC, 1655 Jamestown Street, SE, Salem, OR 97302*

Tuesday, November 18

3:00 pm - 9:00 pm

NICOLETT

Executive Board Meeting

9:00 am - 7:00 pm

ROCHESTER

Personal Journey through Music and Imagery (Level I Guided Imagery and Music Training)

Pre-registration and fee required.

7:00 pm - 9:00 pm

COAT ROOM

Registration Desk Open



10:00 am - 6:00 pm

SALON E

Music Therapy & Premature Infants Institute

Presenter(s): *Deanna Hanson Abromeit, MA, MT-BC; Jayne M. Standley, PhD, MT-BC; Jennifer Whipple, MM, MT-BC*

Pre-registration and fee required.

Contact: *Jennifer Whipple, MM, MT-BC, 3961 Gaffney Loop, Tallahassee, FL 32303-1216*

4:00 pm - 7:00 pm

DULUTH

AMTAS Officers

6:00 pm - 8:00 pm

HENNEPIN

Membership Committee Meeting

6:00 pm - 8:00 pm

CARVER

Reimbursement Committee Meeting

6:00 pm - 8:00 pm

BOARD ROOM 3

Special Target Populations Committee

6:00 pm - 8:00 pm

DIRECTORS ROW 4

Standards of Clinical Practice Committee

7:00 pm - 9:00 pm

DIRECTORS ROW 1

Regional Presidents Meeting

7:00 pm - 10:00 pm

DULUTH

AMTAS Executive Board

7:00 pm - 10:00 pm

DIRECTORS ROW 3

Ethics Board

8:00 pm - 10:00 pm

BOARD ROOM 2

Council Coordinators and Committee Chairs

Wednesday, November 19

7:00 am - 11:30 am

COAT ROOM

Registration Desk Open

8:00 am - 10:00 am

NICOLETT

Executive Board Meeting

8:00 am - 3:00 pm

SALON G

Music Therapy & Elderly Persons: Innovative Approaches Institute

Presenter(s): *Roberta S. Adler, MT-BC; Jennifer D. Geiger, MA, MT-BC; Lisa R. Jackert, MA, MT-BC; Carina S. Manthey, MT-BC; Robin E. Rio, MA, MT-BC; Katherine J. Schellin, MT-BC*

Pre-registration and fee required.

Contact: *Robin E. Rio, MA, MT-BC, 5934 S. Juniper St., Tempe, AZ 85283*

1:00 pm - 5:00 pm

COAT ROOM

Registration Desk Open

3:00 pm - 4:00 pm

BOARD ROOM 2

Joint Academic Program and Internship

2:00 pm - 6:00 pm

DIRECTORS ROW 3

Professional Advocacy Committee

Session Schedule — Thursday

Thursday, November 20

7:00 am - 11:30 am

COAT ROOM

Registration Desk Open

7:30 am - 12:30 pm

DULUTH

CMTE A. Let's Start at the Very Beginning: The Basics of Music Therapy Assessment

Presenter(s): *Kristen Chase, MM, MT-BC*

Pre-registration and fee required. From examining the reasons for music therapy assessment to creating an original assessment tool, this session will provide attendees with the opportunity to return to the basics and discover the what, why, and how of the music therapy assessment process.

Contact: *Kristen Chase, MM, MT-BC, Fine and Performing Arts, W-Box 70, Columbus, MS 39701*

7:30 am - 12:30 pm

SALON E

CMTE B. The World of Drumming: Basics of Rhythm and Drumming and it's Applications in Music Therapy

Presenter(s): *John Scalici*

Presenter: *Christine Stevens, MT-BC*

Pre-registration and fee required. This workshop will introduce basic hand drumming techniques and tools for successfully incorporating rhythm-based activities in music therapy practices. The course will cover world percussion instruments and the art of spoken syllables to develop a sense of rhythm. Drums will include frame drum, tabla, conga, djembe, tambourine, talking drum, bongos, and others. Sponsored by Remo, Inc.

Contact: *Christine Stevens, MT-BC, 28101 Industry Drive, Valencia, CA 91355*

7:30 am - 12:30 pm

SALON G

CMTE D. Clinical Interventions Using Tone Bars and Pitched Percussion in Active Treatment

Presenter(s): *Laurie A. Farnan, MMTC, NMT, WMRCT, MT-BC, Jane M. Meyer, WMRCT, RMT, Michelle L. Schumacher, MSE, WMTK, RMT*

Pre-registration and fee required. The purpose of this workshop is to demonstrate the versatility of tone bars and pitched percussion instruments (xylophones, metalophones) in a live music treatment setting. Utilizing these

instruments, therapists and support staff can have more flexibility providing multi-sensory interventions designed to increase sensory processing, promote relaxation, and support improvisation. Sponsored by HSS, Inc., Hal Leonard Publications and West Music.

Contact: *Michelle L. Schumacher, MSE, WMTK, RMT, 5030 Flambeau Road, Madison, WI 53705*

7:30 am - 12:30 pm

SYMPHONY

CMTE E. Training in Group Clinical Improvisation as a Music Psychotherapy Methodology: Insight and Process Oriented Therapy Levels

Presenter(s): *Susan C. Gardstrom, MA, MT-BC, James M. Hiller, MMTC, MT-BC*

Presenter: *Joni Milgram-Luterman, PhD, MT-BC*

Pre-registration and fee required. This presentation will focus on knowledge and skills essential for treatment at the level of insight and process-oriented music therapy. Through instruction and participation as a learning/peer supervision group, participants will learn and implement procedures for designing, guiding, and processing group improvisation experiences. Basic concepts of the Improvisation Assessment Profiles will be presented. This presentation is applicable to clinicians who currently possess fundamental skills and knowledge in facilitating improvisation experiences at the supportive music therapy level.

Contact: *James M. Hiller, MMTC, MT-BC, 300 College Park Ave., Dayton, OH 45469-0290*

7:30 am - 12:30 pm

MARQUETTE

CMTE F. Understanding Dementia "101" and Adding Children to Incorporate Music Therapy-Based Intergenerational Fun

Presenter(s): *Catherine J. Connoley, MT-BC, Katherine J. Schellin, MT-BC*

Presenter: *Joey Walker, MA, MT-BC*

Pre-registration and fee required. This course will provide an overview of the symptoms and treatment of dementia, and how this information relates to the goal of creating effective music therapy treatment models. Communication techniques, inclusion of family members, and intergenerational activities will be discussed.

Contact: *Katherine J. Schellin, MT-BC, 1114 Wildhorse Meadows Dr., Chesterfield, MO 63005-1315*

Level: Professional, Entry

7:30 am - 12:30 pm

CONRAD B

CMTE G. The CREATE Concept: An Interdisciplinary Approach to the Management of Individuals with Parkinson's Disease

Presenter(s): *Joan Gardner, RN, BSN; Sandra L. Holten, MT-BC; Marjorie Johnson, MA-CCC-SLP; Rick Vandendolder, OTR; Sandra Varpness, BSW; Maria Walde-Douglas, PT; Rose Wichmann, PT*

Pre-registration and fee required. Designing care plans for people with Parkinson's disease (PD) can be challenging. In this presentation, participants will learn about primary symptoms of Parkinson's disease, music therapy interventions to address symptoms of PD, the roles of other multidisciplinary team members, and how music therapists can partner with them in the management of PD.

Contact: *Sandra L. Holten, NMT, MT-BC, 5465 Vinewood Lane, Plymouth, MN 55442*

Level: Professional

7:30 am - 12:30 pm

HENNEPIN

CMTE H. The Long and Winding Road: The Music Therapy Process through Longitudinal Case Studies

Presenter(s): *Ronna S. Kaplan, MA, MT-BC*

Pre-registration and fee required. Four longitudinal case studies with clients diagnosed with autism and other developmental disabilities will be discussed. Steps taken to initiate changes in session type, format, and/or interventions/protocols due to progress or lack thereof will be analyzed. Videotaped examples, demonstration, audience participation, and discussion will be utilized to illustrate various techniques in the music therapy process.

Contact: *Ronna S. Kaplan, MA, MT-BC, 2557 Derbyshire Road, Cleveland Heights, OH 44106-3230*

Level: Professional, Entry



Session Schedule — Thursday

7:30 am - 12:30 pm

SALON F

CMTE I. The Art of Gentle Heart Massage: Five Fingerpicking Gems for Guitar

Presenter(s): Robert Greene, JJ, PhD, MTC-BC

Pre-registration and fee required. Participants will learn guitar fingerpicking styles for five songs: *Puff* (Peter, Paul, & Mary), *Don't Think Twice, It's All Right* (ibid.), *Blackbird* (The Beatles), *Scarborough Fair* (Simon & Garfunkle), and *You Can Close Your Eyes* (James Taylor). Prerequisites: Beginning guitar skills. Bring a guitar capo.

Contact: Robert Greene, JJ, PhD, MTC-BC, Univer of Missouri-Kansas City, 4949 Cherry St., 316 Grant Hall, Kansas City, MO 64110-2229

Level: Professional, Entry, Student

7:30 am - 12:30 pm

LA SALLE

CMTE J. Internship Development and Supervision

Presenter(s): Holly T. Baxter, MTC-BC; Kimberly A. Bell, MTC-BC; Mavis N. Mahlberg, MA, MTC-BC; Theresa M. McManus, MTC-BC; Sally Ann Shaffer, MA, MTC-BC; Mary C. Stryck, MTC-BC

Pre-registration and fee required. This course reviews the National Roster Internship Guidelines and application process, the AMTA Professional Competencies as a foundation for training, and basic internship supervision strategies. It fulfills the supervision training requirement for National Roster Internship Directors but is open and applicable to all music therapy internship supervisors. No charge for this course for qualified AMTA members.

Contact: Mavis N. Mahlberg, MA, MTC-BC, 3618 Wyoming #3, Kansas City, MO 64111

Level: Professional

7:30 am - 12:30 pm

CONRAD D

CMTE K. The Use of Music Therapy in Pain Management

Presenter(s): Katy Bond, RN; Piper D. Laird-Riehle, MM, MTC-BC; Tracy A. Leonard-Warner, MTC-BC

Pre-registration and fee required. This presentation will explore pain, the under-treatment of pain, theories regarding the pathophysiology of pain, the components of a pain assessment, and the use of music therapy as a non-pharmacological intervention for pain.

A database used to track patients, interventions, and outcomes will be presented.

Contact: Tracy A. Leonard-Warner, MTC-BC, 7733 N. 5th Ave., Phoenix, AZ 85021

Level: Professional

7:30 am - 12:30 pm

NICOLETT

CMTE L. A Nordoff-Robbins Based Approach for Guitar

Presenter(s): Rick Soshensky, MA, CMT

Pre-registration and fee required. This course will highlight the use of guitar in Nordoff-Robbins music therapy. Video excerpts will review and analyze key aspects of this modality. Approaches to various modes, scales, intervals, and styles will be covered. Participants will learn musical techniques, discuss clinical application and rationale, and develop new resources for utilizing the guitar in practice.

Contact: Rick Soshensky, MA, CMT, 1814 Barnes Avenue, Bronx, NY 10462-3608

Level: Professional, Entry, Student

8:00 am - 12:00 pm

CONRAD C

Academic Program Approval Committee

8:00 am - 12:00 pm

DIRECTORS ROW 1

Affiliate Relations Committee

8:00 am - 12:00 pm

CARVER

Employment & Public Relations Committee

8:00 am - 12:00 pm

BOARD ROOM 3

Executive Board Meeting

8:00 am - 12:00 pm

DIRECTORS ROW 4

Government Relations Committee

8:00 am - 12:00 pm

SUITE 1*

Special Target Populations Committee

* Suites are Hotel Rooms. Please check at the conference registration desk before the session begins to find the specific room number assigned to each Suite.

8:00 am - 12:00 pm

BOARD ROOM 2

Standards of Clinical Practice Committee

8:30 am - 12:00 pm

DIRECTORS ROW 3

Professional Advocacy Committee

8:30 am - 12:30 pm

CARVER'S RESTAURANT

SAAB

9:00 am - 11:00 am

SUITE 2*

International Relations Committee

* Suites are Hotel Rooms. Please check at the conference registration desk before the session begins to find the specific room number assigned to each Suite.

9:00 am - 12:00 pm

SUITE 4*

Ethics Board

* Suites are Hotel Rooms. Please check at the conference registration desk before the session begins to find the specific room number assigned to each Suite.

9:00 am - 7:00 pm

ROCHESTER

Personal Journey through Music and Imagery (Level I Guided Imagery and Music Training)

Pre-registration and fee required.

10:00 am - 12:00 pm

SUITE 3*

Continuing Education Committee

* Suites are Hotel Rooms. Please check at the conference registration desk before the session begins to find the specific room number assigned to each Suite.

11:00 am - 12:00 pm

CONRAD C

Joint-Academic Program Approval, Association Internship Approval and International Relations Committees

12:00 pm - 2:00 pm

BALLROOM FOYER

Cash Lunch

12:45 pm - 2:00 pm

BOARD ROOM 3

Research Committee

Session Schedule — Thursday

1:00 pm - 5:00 pm

COAT ROOM

Registration Desk Open

1:30 pm - 5:30 pm

DULUTH

Assembly of Delegates Meeting

1:30 pm - 6:30 pm

SALON E

CMTE M. Kids Can Listen, Kids Can Move (Kids Can Sing and Play too!)

Presenter(s): Lynn Kleiner

Presenter: Christine Stevens, MTC-BC

Pre-registration and fee required. This workshop presents materials that encourage children (adults with disabilities) to respond through movement, singing, and playing. Classical music, stories, instruments, props, and other joyful methods that capture children's attention will be showcased. Sponsored by Remo, Inc.

Contact: Lynn Kleiner, 1524 Gates Avenue, Manhattan Beach, CA 90266

1:30 pm - 6:30 pm

CONRAD A

CMTE N. Music Therapy on Cyberspace: Web-based Introduction to Music Therapy via Blackboard® 5.5

Presenter(s): Chih-Chen Lee, MA, MTC-BC

Pre-registration and fee required. This presentation will walk the audience through the rationales of course design, the inclusion of course contents, useful elements of pedagogical techniques and educational technology, and suggestions for future development of Music Therapy Distance Education (MTDE).

Contact: Chih-Chen Lee, MA, MTC-BC, 1505 Plain Ave., Weatherford, OK 73096

Level: Entry, Student

1:30 pm - 6:30 pm

CONRAD B

CMTE O. Music Therapy in Integrative Medicine

Presenter(s): Suzanne B. Hanser, EdD, MTC-BC; Deforia Lane, PhD, MTC-BC; Lucanne Magill, MTC-BC; Concetta M. Tommino, DA, MTC-BC

Pre-registration and fee required. Integrative medicine is an area that is incorporating music therapy services. Music therapists are required to define their roles within integrative medicine and be able to describe, document, and

research clinical work in this field. This course provides a forum in which clinical models, service approaches, research, and professional issues will be discussed.

Contact: Suzanne B. Hanser, EdD, MTC-BC, 589 Saw Mill Brook Parkway, Newton Centre, MA 02459

Level: Professional, Entry

1:30 pm - 6:30 pm

NICOLETT

CMTE P. Increasing Clinical Guitar Skills

Presenter(s): Robert E. Jordan, Jr., MA, MTC-BC

Pre-registration and fee required. This course is designed to increase and enrich harmonic, rhythmic, and stylistic clinical guitar accompaniment skills. It includes expanding chord vocabulary by adding inversions, different voicings, and more colorful chords. It also includes the exploration of stylistic patterns, riffs, and bass runs within blues, folk, and ballad idioms.

Contact: Robert E. Jordan, Jr., MA, MTC-BC, 201 Preston Road, Flourtown, PA 19031

Level: Professional, Entry

1:30 pm - 6:30 pm

CONRAD D

CMTE Q. Appalachian Dulcimer: How to Play It and Use It in Your Clinical Practice

Presenter(s): Judy R. Belland, MEd, MTC-BC; Edith M. Merlino, RMT

Presenter: Christine C. Wineberg, MTC-BC

Pre-registration and fee required. Participants will learn beginning and intermediate techniques on this versatile, easy-to-play instrument. Workshop leaders will provide experiential examples of ways the dulcimer may be incorporated into music therapy practice. Participants are asked to bring a dulcimer, if possible.

Contact: Judy R. Belland, MEd, MTC-BC, 14 Pine Street, #3B, The Plains, OH 45780

Level: Professional, Entry, Student

1:30 pm - 6:30 pm

MARQUETTE

CMTE R. The Art of Selling: Business Basics for Music Therapists

Presenter(s): David W. Luce, PhD, MTC-BC

Pre-registration and fee required. Effective selling—meeting customers' needs through the exchange of goods or services—lies at the heart of successful business practice in contemporary health care. Participants in this workshop will learn basic steps to successful selling and practice applying those steps to

their situations through role-playing exercises.

Contact: David W. Luce, PhD, MTC-BC, 2955 Champion Way #117, Tustin, CA 92782

Level: Professional, Entry, Student

1:30 pm - 6:30 pm

LA SALLE

CMTE S. Individuals with Severe Disabilities: Music Therapy Strategies that Make a Difference

Presenter(s): Kathleen Coleman, MMT, MTC-BC; Catherine D. Knoll, MTC-BC

Pre-registration and fee required. Learn dozens of strategies proven to maximize the therapeutic experience for children and adults with very limited abilities. Presenters have over fifty years combined clinical experience developing relevant assessments, target objectives, utilizing augmentative communication devices, facilitating active music-making, and documenting progress, even in the case of individuals with deteriorating conditions.

Contact: Catherine D. Knoll, MTC-BC, 1250 Ollie Street, Stephenville, TX 76401

Level: Professional, Entry, Student

1:30 pm - 6:30 pm

SYMPHONY

CMTE T. Stories, Myths and Music Therapy: Clinical Interventions

Presenter(s): Ronald M. Borczon, MM, MTC-BC

Presenter: Brian Abrams, PhD, FAMI, LPC, MTC-BC

Pre-registration and fee required. This didactic and experiential workshop will allow participants to experience music and story telling as a clinical intervention. Discussion will revolve around the telling of the story, aspects of the characters, analytical interpretation, and the use of music. Story telling and its relationship to the psyche will also be explored.

Contact: Ronald M. Borczon, MM, MTC-BC, 6743 Lafayette Court, Moorpark, CA 93021

Level: Professional, Entry

1:30 pm - 6:30 pm

HENNEPIN

CMTE U. Hospice Music Therapy: A Guide to Creating First-Time Programs and Meeting Clinical Needs

Presenter(s): Russell E. Hilliard, PhD, LCSW, MTC-BC

Presenter: Dena Register, MM, MTC-BC

Pre-registration and fee required. This presentation will explain the valuable role music

Session Schedule — Thursday, Friday

therapists play in hospice and palliative care. Identifying hospices that could support full-time music therapy programs, developing first-time programs, and implementing and maintaining strong programs will be explained. Surveys of hospice administrators will be presented to illustrate unique ways music therapists can market themselves and the profession.

Contact: *Russell E. Hilliard, PhD, LCSW, MT-BC, 150 Sterling Place, Highland, NY 12528*

Level: Professional, Entry, Student

2:30 pm - 5:00 pm

DIRECTORS ROW 2

AMTA Village

2:30 pm - 5:00 pm

SALON A, B, C

Exhibits Open

3:00 pm - 5:00 pm

CONRAD C

AMTAS Executive Board

5:30 pm - 6:30 pm

CONRAD C

Music Therapy Perspectives Editorial Board

5:30 pm - 7:00 pm

SUITE 3

Regional Executive Board Meeting - Western

* Suites are Hotel Rooms. Please check at the conference registration desk before the session begins to find the room number assigned.

5:30 pm - 7:00 pm

SUITE 2*

Regional Executive Board Meeting - Southwestern

* Suites are Hotel Rooms. Please check the conference registration desk before the session begins to find the room number assigned.

5:30 pm - 7:00 pm

DIRECTORS ROW 4

Regional Executive Board Meeting - Southeastern

5:30 pm - 7:00 pm

CARVER'S RESTAURANT

Regional Executive Board Meeting - South Central

5:30 pm - 7:00 pm

BOARD ROOM 2

Regional Executive Board Meeting - New England

5:30 pm - 7:00 pm

DIRECTORS ROW 3

Regional Executive Board Meeting - Midwestern

5:30 pm - 7:00 pm

DIRECTORS ROW 1

Regional Executive Board Meeting - Mid-Atlantic

5:30 pm - 7:00 pm

BOARD ROOM 3

Regional Executive Board Meeting - Great Lakes

7:30 pm - 9:30 pm

SALON D, E, F, G

Opening Session

9:30 pm - 11:00 pm

SALON A, B, C AND BALLROOM FOYER

Spectacular Silent Auction and Reception Exhibit Hall Grand Opening

11:00 pm

ROCHESTER

Jam Room

Friday, November 21

6:00 am - 6:00 pm

DIRECTORS ROW 4

Meditation Room

6:30 am - 8:30 am

BALLROOM FOYER

Cash Breakfast

7:00 am - 11:30 am

COAT ROOM

Registration Desk Open

7:30 am - 9:30 am

DULUTH

Assembly of Delegates Meeting

8:00 am - 9:30 am

MARQUETTE

Are We Simply "Entertainment?" Educating Hospital Personnel to Guarantee Quality Referrals

Presenter(s): *Leslie D. Meadows, MT-BC*

Presenter: *Courtney Brez, MMT, MT-BC*

Even in institutions where music therapy is well established, referrals for services are often given because a patient is bored. This presentation will explore results of a survey of nurses and social workers regarding knowledge of music therapy, quality of referrals based on patient needs, and the educational program designed to in-service hospital personnel.

Contact: *Leslie D. Meadows, MT-BC, 790 Lindenwood Ln., Medina, OH 44256-1619*

8:00 am - 9:30 am

CONRAD A

Beyond the Noise: Understanding and Utilizing Adolescent Music Choices

Presenter(s): *Holly T. Baxter, MT-BC*

Presenter: *Erin B. Salez, MT-BC*

Music therapists strive to utilize a broad range of music effectively. However, the extremely factionalized world of adolescent music can be intimidating to the outsider. This session will explain the components and therapeutic uses of various musical styles as well as the unique connection adolescents make with their preferred music.

Contact: *Holly T. Baxter, MT-BC, 7101 Texhoma Avenue, Van Nuys, CA 91406*

Level: Entry

8:00 am - 9:30 am

SYMPHONY

Developing a Program of Research: Music Therapy Interventions in Cancer Care

Presenter(s): *Debra S. Burns, PhD, FAMI, MT-BC*

The increased popularity of music therapy services emphasizes the need for research programs to determine music therapy best practices. This presentation will include a description of a beginning research program exploring the benefits of music therapy in oncology populations and the presenter's experience building research teams and conducting clinical research.

Contact: *Debra S. Burns, PhD, FAMI, MT-BC, 1111 Middle Dr. #NU338, Indianapolis, IN 46202-5107*

Level: Professional, Entry, Student

Session Schedule — Friday

8:00 am - 9:30 am

SALON G

End of Life Care: Music Therapy in a Palliative Care Setting

Presenter(s): *Andy Edmundson, MTC-BC*

Presenter: *Cathy McKinney, PhD, MTC-BC*

Calvary Hospital, Bronx, NY is unique in that it is the only hospital of its kind in the world that provides end of life care for persons with advanced/end-stage cancer. This experiential and didactic presentation will address issues/efficacy, objectives, and therapeutic approaches for music therapy in pain and palliative care.

Contact: *Andrew Edmundson, MTC-BC, 609 W 175th St., Apt. 4C, New York, NY 10033*

Level: Professional

8:00 am - 9:30 am

ROCHESTER

Family Portrait: The Use of Music Therapy in the Treatment of Domestic Violence

Presenter(s): *Brian Abrams, PhD, FAMJ, LPC, MTC-BC; Julie Davis; Tony Ollerton*

This paper will feature a consideration of the unique role and benefits of music therapy in the treatment of domestic violence, domestic violence statistics, a review of literature, a discussion of the nature of various music therapy interventions, case material, and an interactive demonstration.

Contact: *Tony Ollerton, 2696 N. 270 E., Logan, UT 84341-5705*

Level: Entry

8:00 am - 9:30 am

SALON E

In Support of Breath Support: Addressing Breathing Difficulties in Older Adults

Presenter(s): *Rebecca L. Engen, PhD, MTC-BC*

Presenter: *Leslie A. Crockett, MTC-BC*

What does the limited literature in this area have to say? How do breathing problems affect activities of daily living and quality of life issues? Vocal music can address these needs when approached pedagogically. Participants will explore breath-training exercises relevant to pulmonary rehab and vocal technique within literature specific to older adults.

Contact: *Rebecca L. Engen, PhD, MTC-BC, 7619 Summerwood Lane, Charlotte, NC 28270-2175*

Level: Professional, Entry

8:00 am - 9:30 am

SALON F

Music Therapy in the World of Alternative and Complementary Therapies: Clinical Practice, Education, Research and the Future

Presenter(s): *Annie L. Heiderscheit, MS, FAMJ, MTC-BC*

This workshop is designed to explore the current state of alternative and complementary therapies and how music therapy fits into this realm of practice. Additionally, areas of collaborative research will be explored and how this work furthers the awareness of music therapy throughout the healthcare and educational system.

Contact: *Annie L. Heiderscheit, MS, FAMJ, MTC-BC, 9722 Ives Lane N., Maple Grove, MN 55369*

Level: Professional

8:00 am - 9:30 am

NICOLETT

Music Therapy on the IEP: From General Information/Strategies to Case Examples

Presenter(s): *Theresa Chardos, MTC-BC; Ryoko Fukagawa, MTC-BC; Julie Guy, MTC-BC*

Presenter: *Barbara L. Keuer, PhD, MTC-BC*

This presentation will review music therapy for the Individualized Education Plan (IEP) from assessment and documentation to service delivery options. Contractual implications and challenges will be highlighted. Creative tips, techniques, strategies, and resources for planning direct service/consultative experiences will be shared through case examples and demonstration. Participants will practice goal writing and brainstorm interventions.

Contact: *Julie Guy, MTC-BC, 2895 W. Canyon Ave., San Diego, CA 92123-4689*

Level: Entry, Student

8:00 am - 9:30 am

CONRAD D

Starting a Successful Music Therapy-Based Wellness Program - The Musicians' Wellness, Inc. Model

Presenter(s): *Louise Montello, DA, MTC-BC*

Presenter: *Deborah Bradway, MTC-BC*

This workshop will demonstrate how to develop a music therapy based wellness program with any population. It includes an overview of the goals of music-based wellness programs, an experiential component focusing on clinically tested music therapy techniques that can be adapted into any program, and a

question and answer session.

Contact: *Louise Montello, DA, MTC-BC, 4 Washington Square Village, Apt #13J, New York, NY 10012*

Level: Professional

8:00 am - 9:30 am

HENNEPIN

Synthesizing the Greenspan (Floortime) Model and Music Therapy for Children with Autism

Presenter(s): *Mike D. Brownell, MME, MTC-BC; Carolyn J. Sayre, MTC-BC*

The Greenspan Model is a developmental, individualized, and relationship-based mode of interaction developed initially for parents of individuals with disabilities. This presentation will explain Greenspan's original research, detail child-based therapy, encourage the synthesis of this approach with music therapy for children on the autism spectrum, and describe our own experiences doing so.

Contact: *Mike D. Brownell, MME, MTC-BC, 1900 W. Stadium Blvd., Suite E, Ann Arbor, MI 48103*

Level: Professional, Entry

8:00 am - 9:30 am

CARVER

Technology in the Classroom: Enhancing Classroom Learning with Voices: A World Forum for Music Therapy

Presenter(s): *Kristen Chase, MA, MTC-BC; Michele Forinash, DA, LMHC, MTC-BC; Barbara L. Wheeler, PhD, MTC-BC*

Contact: *Kristen Chase, MTC-BC, Fine and Performing Arts, W-Box 70, Columbus, MS 39701*

8:00 am - 9:30 am

HENNEPIN

Themes in Therapy: A Qualitative Project with Homeless Adults in Transition

Presenter(s): *Robin E. Rio, MA, MTC-BC*

Presenter: *Lisa E. Jackert, MA, MTC-BC*

This clinically based research systematically documents the process of a music therapy group of adults transitioning from living in a homeless shelter to a more stable environment. Music therapy themes that emerged included creativity, musical expression, spirituality, and emotional well being. All participants were also members of a gospel choir.

Contact: *Robin E. Rio, MA, MTC-BC, 5934 S. Juniper St., Tempe, AZ 85283*

Level: Professional

Session Schedule — Friday

8:00 am - 9:30 am

LA SALLE

Working in Harmony: The Collaboration between Music Therapy and Child Life

Presenter(s): Jennifer Ferrante, CCLS; Lisa L. Jones, MA, MT-BC

Presenter: Elizabeth A. Tober, MT-BC

This presentation will address the collaboration between music therapy and child life within the pediatric hospital setting. Many issues will be discussed, including co-treatment during procedures, team dynamics, and documentation. Using case presentations, slides, and group discussion, the presenters will illustrate how patients and families benefit from this team approach.

Contact: Lisa L. Jones, MA, MT-BC, 2311 Holly Drive, Euless, TX 76039-4220

Level: Entry

9:30 am - 12:00 pm

DIRECTORS ROW I

Membership Committee

9:45 am - 11:00 am

SALON D

Plenary Lecture- Wearing Two Hats: Personal and Professional Perspectives on Music Therapy and its Implications for Enhancing Individual and Family Quality of Life

Presenter(s): Ann Turnbull, EdD; J. T. Turnbull; Rud Turnbull, LJM

11:00 am - 1:15 pm

SALON D, BALLROOM FOYER

Special Target Populations Networking Lunch

11:00 am - 1:30 pm

SALON A, B, C

Exhibit Spectacular

11:00 am - 2:00 pm

BALLROOM FOYER

Cash Lunch

11:00 am - 5:00 pm

DIRECTORS ROW 2

AMTA Village

11:00 am - 5:00 pm

SALON A, B, C

Exhibit Hall Open

12:15 pm - 1:30 pm

DIRECTORS ROW I

Affiliate Relations Committee

12:15 pm - 1:30 pm

DIRECTORS ROW 3

Continuing Education Committee

12:15 pm - 1:30 pm

CONRAD B, C

Employment and Public Relations Committee

12:15 pm - 1:30 pm

CONRAD D

Ethics Board

12:15 pm - 1:30 pm

ROCHESTER

International Relations Committee

12:15 pm - 1:30 pm

NICOLETT

Journal of Music Therapy Editorial Board

12:15 pm - 1:30 pm

CONRAD A

Judicial Review Board

12:15 pm - 1:30 pm

DULUTH

Professional Advocacy Committee

12:15 pm - 1:30 pm

BOARD ROOM 2

Reimbursement Committee

12:15 pm - 1:30 pm

SYMPHONY

Standards of Clinical Practice Committee

1:00 pm - 5:00 pm

COAT ROOM

Registration Desk Open

1:30 pm - 3:30 pm

HENNEPIN

Appalachians to Russia: The Use of Folk Tales and Folk Songs with At-Risk Children

Presenter(s): Susan Frazier, MMEd; Michelle J. Hairston, EdD, MT-BC; Linda High, EdD

This session will give beginning music therapists creative ideas for using a multicultural approach to working with at-risk children. The

participants will experience examples of Appalachian and Russian folk tales, with added Orff accompaniments and an opportunity to create their own accompaniment for a folk tale.

Contact: Michelle J. Hairston, EdD, MT-BC, 400 Mary Beth Drive, Greenville, NC 27858

1:30 pm - 3:30 pm

DULUTH

CBMT Continuing Education—Changes and Opportunities for Making the Most of Your Investment

Presenter(s): Nancy Hadsell, PhD, MT-BC

Presenter: Celeste A. Behnke, MT-BC

This presentation focuses on assisting new and seasoned MT-BCs with managing their continuing education programs. It focuses on (a) understanding the options for continuing education, (b) deciding on scope of practice areas for continuing education, (c) planning a cohesive education program, and (d) maximizing the benefits accrued from the dollars invested.

Contact: Nancy Hadsell, PhD, MT-BC, P. O. Box 425768, Denton, TX 76204

Level: Entry

1:30 pm - 3:30 pm

SALON F

Censorship in Music Therapy: Where Do We Draw the Line?

Presenter(s): Jeanne O. Besetzny, MAMT, MT-BC; Bethany L. Cook, MT-BC; Kathleen M. Dolesh, RMT; Larisa G. McHugh, MAMT, MT-BC; Leslie D. Meadows, MT-BC; Annette M. Pleau, MAMT, MT-BC

What is the role of censorship in music therapy? Is it ethical? What about clients who have differing cultural values from us? This session is an open discussion between the facilitators and the audience of censorship of music in music therapy sessions.

Contact: Annette M. Pleau, MAMT, MT-BC, 24 Wesley Park, #3, Somerville, MA 02143-1803

Level: Professional, Entry

1:30 pm - 3:30 pm

DIRECTORS ROW 3

Development Advisory Committee

Session Schedule — Friday

1:30 pm - 3:30 pm

SYMPHONY

Improvisational Techniques Applied to Forensic Psychiatric Populations Utilizing Gospel, Blues, and Jazz

Presenter(s): *Karen J. Reed, MA, RMT*

This session is designed for music therapists who wish to develop/expand their improvisation skills from an integrated gospel/jazz perspective. A rationale for clinical applications with forensic populations will be presented. The keyboard will be used to demonstrate examples of gospel, blues, and jazz structure. The session will conclude with a group improvisation.

Contact: *Karen J. Reed, MA, RMT, 924 Patria Circle, Atascadero, CA 93422-6893*

Level: Entry

1:30 pm - 3:30 pm

CONRAD B, C

Integrated Health Care: A Music Therapy and Medicine Protocol

Presenter(s): *Theresa Chardos, MT-BC; Elizabeth Douglass, MA; Tara Dutcher; Darci Fontenot; Shaina Pugh; Barbara L. Reuer, PhD, MT-BC; Courtney Warrall*

The presenters will describe music therapy protocols developed and used in various hospital/hospice settings for bedside work, substance abuse, and healing hearts programs. Case material and video vignettes will be used to illustrate examples. Participants will experience specific music therapy strategies and applications such as toning, songwriting techniques, and mandalas.

Contact: *Barbara L. Reuer, PhD, MT-BC, 12570 Carmel Creek Road #73, San Diego, CA 92130*

Level: Professional, Entry

1:30 pm - 3:30 pm

CONRAD A

Integration of Harp and Music Therapy: Applications for Unique Research

Presenter(s): *Jacque Petroni, Lee Anna Rasar, MME, WMTK, MT-BC; Paula Smith*

Presenter: *Jessica M. Lichty, MT-BC*

This session will provide an overview of biomedical research applications for the integration of harp in music therapy sessions. It will include a description of results from therapeutic responses to playing harp and will present current research models that incorporate both active and passive

involvement with harp.

Contact: *Lee Anna Rasar, MME, WMTK, MT-BC, 2621 Winsor Drive, Eau Claire, WI 54703-1778*

Level: Professional

1:30 pm - 3:30 pm

CONRAD D

Maximum Guitar (A Simple Approach to a Complex Instrument)

Presenter(s): *Brian Satterlee, MT-BC*

Have you ever wondered how to get past open position chords? What lead scales fit what styles? What is a guitar maintenance schedule? What kind of guitar is right for you? This is a hands-on opportunity to expand your working knowledge of chords and scales. Guitar and fingers required.

Contact: *Brian Satterlee, MT-BC, 32915 Hilary Circle NE, Cambridge, MN 55008*

Level: Entry

1:30 pm - 3:30 pm

NICOLETT

Music Therapy Strategies to Address Auditory Processing, Hyperacusis and White Noise Sensitivity

Presenter(s): *Lillieth Grand, MS, MT-BC; Nicole Tondreau*

This session will address specific strategies that music therapists can utilize with clients who suffer from auditory processing difficulties, hyperacusis, and/or white noise sensitivity. Video excerpts of some of these approaches with children will be shown. Participants will receive definitions and resources for these conditions. Experimental segments will highlight assessment and empathy exercises.

Contact: *Lillieth Grand, MS, MT-BC, 1201 Donegal Pl., Costa Mesa, CA 92626*

Level: Professional

1:30 pm - 3:30 pm

LA SALLE

Music Therapy to Facilitate Living Well with Parkinson's Disease

Presenter(s): *Sandra L. Holten, MT-BC*

Presenter: *Dawn McDougal Miller, MME, MT-BC*

Parkinson's disease affects 1% of the population over 60. The presenter will provide an overview of Parkinson's symptoms and will focus on a variety of music therapy interventions that have successfully addressed concerns and improved the quality of life for people with Parkinson's disease. Neurologic

music therapy techniques will be emphasized.

Contact: *Sandra L. Holten, NMTC, MT-BC, 5465 Vinewood Lane, Plymouth, MN 55442*

Level: Entry

1:30 pm - 3:30 pm

MARQUETTE

Music to Keep the Well Elderly Well: A Paradigm Shift in Music Therapy Practice

Presenter(s): *Diane L. Quitmeyer, MBA, MT-BC*

Presenter: *Rosalie M. Duvall, MA, MT-BC*

The United States is becoming an aging society. The social and financial impact of this demographic shift makes it imperative that health care providers seek ways to keep people well and healthy. This session will review the paradigm shift and research to validate the use of music with the well elderly.

Contact: *Diane L. Quitmeyer, MBA, MT-BC, 924 San Sebastian Drive, Fenton, MO 65026-3037*

Level: Professional

1:30 pm - 3:30 pm

SALON D

Music Video Intervention for Adolescents/Young Adults Undergoing Stem Cell Transplant-Phase 2

Presenter(s): *Debra S. Burns, PhD, FAMI, MT-BC; Joan Haase, PhD, RN; Ann Hannan, MT-BC; Renata Maddux, MT-BC; Celeste Phillips, RN; Sheri L. Robb, PhD, MT-BC*

Music video interventions for adolescents receiving stem cell transplant may lower pain, anxiety, depressed mood, and help patients cope with depression by structuring treatment time in a meaningful manner. This presentation will describe an extension of Robb's therapeutic music video intervention. Patient and research team perspectives will be discussed.

Contact: *Debra S. Burns, PhD, FAMI, MT-BC, 1111 Middle Dr. #NU338, Indianapolis, IN 46202-5107*

Level: Professional

1:30 pm - 3:30 pm

CARVER

Scores of Fun: Using Musical Theater as a Tool for Social Development with Inner City Youth

Presenter(s): *Lynne Patnode, EdD, MT-BC*

Working with inner city youth has its challenges, especially when dealing with social, emotional, and behavioral issues. Scores of

Session Schedule — Friday

Fun is a curriculum that addresses the underlying root of these behaviors and provides children with an opportunity to explore new behaviors through developing, writing, choreographing, and composing a musical theater production.

Contact: *Lynne Patnode, EdD, MT-BC, Hartford Conservatory of Music, 834 Asylum Avenue, Hartford, CT 06105*

Level: Professional, Entry, Student

1:30 pm - 3:30 pm

ROCHESTER

Sink or Swim: Wading through the Literature to Develop Music Therapy Protocols in the NICU

Presenter(s): *Deborah S. Bates, MT-BC; Courtney Brez, MMTC, MT-BC; Ronna S. Kaplan, MA, MT-BC; Anne M. Liberatore, MT-BC*

Music therapy intervention in the NICU is a growing specialty. This workshop will describe protocols for music therapists working with infants of varying ages and with a wide variety of needs in the NICU setting. Included will be a review of relevant literature, a list of appropriate recordings of lullabies, and personal experiences.

Contact: *Courtney Brez, MMTC, MT-BC, 8722 Basswood Place, Macedonia, OH 44056*

Level: Professional, Entry, Student

1:30 pm - 3:30 pm

SALON E

The Psychotherapeutic Use of Songs

Presenter(s): *Annie L. Heiderscheid, MS, FAMI, MT-BC*

Presenter: *Dawn McDougal Miller, MME, MT-BC*

This workshop is designed to explore the use of songs in group and individual therapy. The presentation will include several clinical illustrations of songs utilized with adults and adolescent clients. The workshop will incorporate methods of analyzing lyrics, music, and what a song communicates about the client.

Contact: *Annie L. Heiderscheid, MS, FAMI, MT-BC, 9722 Ives Lane N., Maple Grove, MN 55369*

Level: Entry



1:30 pm - 3:30 pm

SALON G

The Use of Improvisation to Increase Expressive Language with Individuals with an Autistic Spectrum Disorder

Presenter(s): *Janice M. Dvorkin, PsyD, ACMT*

Presenter: *Roia Rafiqyan, MT-BC*

This session will address the new information about brain functioning, the prevalence of expressive aphasia in autism, and the use of music to facilitate learning and emotional development, particularly separation/individuation. Music examples will be provided and audience participation is encouraged.

Contact: *Janice M. Dvorkin, PsyD, ACMT, Music Therapy Department, 4301 Broadway Avenue, San Antonio, TX 78209-6397*

Level: Professional, Entry, Student

1:30 pm - 4:45 pm

BOARD ROOM 3

Education and Training Advisory Board

1:30 pm - 4:45 pm

DIRECTORS ROW I

Membership Committee

1:30 pm - 5:00 pm

SALON A, B, C, DIRECTORS ROW 2

Exhibits

3:45 pm - 4:45 pm

LA SALLE

Dual Relationships in Music Therapy Education and Clinical Training: The Survey Says...

Presenter(s): *Deborah S. Bates, MT-BC*

Presenter: *Carol L. Shultis, MEd, FAMI, MT-BC*

The potential for a dual relationship to occur in the educational or internship setting is increased because of the inherent duality in the educator or supervisor's role. This presentation will discuss the results of two hundred and fifty therapists, educators, and clinical training directors who were surveyed about the prevalence of and attitudes towards dual relationships.

Contact: *Deborah S. Bates, MT-BC, 4254 Bridgewater Pkwy., Apt. #203, Stow, OH 44224*

Level: Professional, Entry

3:45 pm - 4:45 pm

SALON G

Getting in the Door: Non-Musical Introduction of Music Therapy to Hospice Patients

Presenter(s): *Jenna Justice, MM, MT-BC*

Terminally ill patients are often overwhelmed by medical, emotional, familial, and spiritual concerns. Participants in this interactive session will explore alternative ways of "winning patients over" through non-musical techniques.

Contact: *Jenna Justice, MM, MT-BC, 1117 Sandringham Drive, Tallahassee, FL 32308-5239*

Level: Entry

3:45 pm - 4:45 pm

CARVER

Issues Related to Consent of Vulnerable Participants in Music Therapy Research

Presenter(s): *Mary E. Boyle, EdD, MT-BC*

Presenter: *Russell E. Hilliard, PhD, LCSW, MT-BC*

This session focuses on issues related to consent/assent/permission of vulnerable participants in qualitative and quantitative research. Many of our participants meet the criteria of "vulnerability" present in the Common Rule. Techniques for assuring ongoing consent and methods of minimizing risks and maximizing benefits will be discussed.

Contact: *Mary E. Boyle, EdD, MT-BC, 27 River Park Drive, New Paltz, NY 12561-2636*

Level: Professional

3:45 pm - 4:45 pm

CONRAD A

Music Therapy Applications for Persons with Severe and Profound Developmental Disabilities

Presenter(s): *Mary Jane Landaker, MT-BC*

This workshop will provide an opportunity to practice music therapy applications that are targeted toward persons with severe and profound disabilities. The presentation will focus on using age appropriate music to accomplish goals in the areas of sensory stimulation, communication, adaptive technology, gross and fine motor coordination, and social behaviors.

Contact: *Mary Jane Landaker, MT-BC, PO Box 35, Perry, KS 66073-0035*

Level: Professional

Session Schedule — Friday

3:45 pm - 4:45 pm

CONRAD B, C

Music Therapy as Procedural Support for Pediatric Patients: A Comparison of Clinical Approaches

Presenter(s): Claire M. Ghetti, MME, CCLS, MT-BC

Music therapy can effectively reduce pain and anxiety before, during, and after painful medical procedures. This session will compare clinical approaches to using music therapy during painful procedures such as intravenous starts, venipuncture, dressing changes, and debridement. Using music as alternative engagement will be contrasted with integrative models of pain management.

Contact: Claire M. Ghetti, MME, CCLS, MT-BC, 174 Thompson Street, Apt. 378, New York, NY 10012

Level: Professional

3:45 pm - 4:45 pm

DULUTH

Preparing for the Certification Exam: Using the Self Assessment Examination as a Guide

Presenter(s): Nancy Hadsell, PhD, MT-BC
Presenter: Celeste A. Behnke, MT-BC

This presentation will focus on the Scope of Practice Outline of the certification examination and the way in which the Self Assessment Examination, published by CBMT, can be used to prepare for successful completion of the exam.

Contact: Nancy Hadsell, PhD, MT-BC, P. O. Box 425768, Denton, TX 76204

Level: Student

3:45 pm - 4:45 pm

SALON E

Psychosomatic Disorders, Pain and Vedic Music

Presenter(s): Balvantray Dave, Kashyap Dave, MD, Falguni Vyas, B.A.M.S.; Kiran Vyas
Tapovan complex is a center established both at Paris and Normandy. It has brought together the doctors of various disciplines who themselves are not only musicians but also familiar with Vedic Sciences. This presentation describes a discussion of the center and an action plan of implementation for therapeutic services.

Contact: Balvantray Dave, 165-09 Union Turnpike, Fresh Meadows, NY 11366

Level: Professional

3:45 pm - 4:45 pm

HENNEPIN

Researching and Documenting the Clinical Interventions and the Program Outcomes of the Phase II NYC Music Therapy Relief Project

Presenter(s): Joseph Nagler, DA, CMT

Music therapy is an effective response and therapeutic modality in disaster, trauma and crisis relief. AMTA has participated in the direct care and service to New York City in response to the disaster incurred on September 11, 2001. In Phase II, a research/evaluation project was conducted to document the clinical interventions and outcomes of the project. The goal of the research project was to investigate the efficacy of music therapy to foster enhanced community and well being. This presentation will discuss the music therapy interventions, outcomes, and results of this evaluation, and will offer recommendations for future music therapy crisis intervention programs.

Contact: Tamara W. Zavislan, MMGT, MT-BC, 8455 Colesville Rd., Ste. 1000, Silver Spring, MD 20910

3:45 pm - 4:45 pm

SALON F

Standard Language and Treatment Protocols: Has It's Time Come?

Presenter(s): Becky L. Pansch, MT-BC

Standard language and treatment protocols may help music therapists seek reimbursement by third parties. The reimbursement committee in Minnesota has been working on the issue and recognizes this could eventually become a national issue. Learn what has been done and discuss future possibilities for your state, region, and AMTA.

Contact: Becky L. Pansch, MT-BC, 629 Hillwood Ct, St. Paul, MN 55119-5357

Level: Professional

3:45 pm - 4:45 pm

NICOLETT

The Effects of Toning on an Individual with Adductor Spasmodic Dysphonia

Presenter(s): Emily Darigan, MA, LPC, MT-BC

Presenter: Marcia Hillestad

Three independent variables of toning were studied for their effect on six different measures of the vocal qualities of a person with schizophrenia with adductor spasmodic dysphonia (ADSD). Results indicated that the subject's range of pitch increased nearly one

octave, suggesting improved vocal flexibility and variability.

Contact: Emily Darigan, MA, LPC, MT-BC, 275 McIntosh Rd., West Chester, PA 19382

Level: Professional

3:45 pm - 4:45 pm

MARQUETTE

The Multicultural Music Therapy Handbook: A New Resource for Music Therapists

Presenter(s): Kristen Chase, MM, MT-BC

This program will explore The Multicultural Music Therapy Handbook, a new resource for music therapy students, clinicians, and educators. Implications for the use of the book in music therapy education and internship training will be provided.

Contact: Kristen Chase, MM, MT-BC, Fine and Performing Arts, W-Box 70, Columbus, MS 39701

Level: Professional, Entry, Student

3:45 pm - 4:45 pm

ROCHESTER

The Roles of Improvisation, Technology and the Young Professional in the Music Therapy Field

Presenter(s): Brett E. Fields, Sarah Gagnon, Davida Price, Kimberly Sena, Crystal Weaver

Presenter: Jo Elynn Kerky Beck, PhD, MT-BC

There are many different facets within the music therapy profession and each has a unique and valuable role. Three very different facets and their roles in both the current and the future of the music therapy field will be discussed, including the roles of music improvisation, technology, and the young professional.

Contact: Kimberly Sena, 413 N. Cleveland, Apt. 1, Loveland, CO 80537

Level: Entry, Student

3:45 pm - 4:45 pm

SYMPHONY

The Uses of Music in a Chronic Back Pain Multidisciplinary Rehabilitation Program

Presenter(s): Abbey Junk

Presenter: Kate E. Gfeller, PhD, RMT

This presentation focuses on uses of music for relaxation and pain management in a chronic back pain multidisciplinary rehabilitation program. The program will include a review of research on the topic, description of a study

Session Schedule — Friday, Saturday

of patient and staff perceptions of therapeutic uses of music, and clinical implications.

Contact: *Abbey Junk, 620 Ashton Place NE, Apt. 305, Cedar Rapids, IA 52402-8330*

Level: Entry, Student

3:45 pm - 4:45 pm

CONRAD D

Use of Children's Literature in an Inclusive Preschool Setting

Presenter(s): *Hilree J. Hamilton, PhD, MTC-BC*

Participants will be involved in a series of activities that combine children's literature, singing, movement, and instrument playing. The books and activities presented will be appropriate for use in early childhood settings that include children both with and without learning challenges. Those attending this session can come prepared to sing, move, and play.

Contact: *Hilree J. Hamilton, PhD, MTC-BC, 1567 Blackhawk Hills Rd., Saint Paul, MN 55122-1213*

Level: Professional, Entry

3:45 pm - 4:45 pm

SALON D

Using Music Therapy to Facilitate Emotional Development in Young Children with Autism Spectrum Disorders

Presenter(s): *Deborah Layman, MM, MTC-BC, Amy Lomadue, MA*

As diagnosis rates of autism spectrum disorders rise, early intervention becomes increasingly critical. This presentation will explore a group music therapy model that addresses emotional development, including generalization of learned skills, in young children with autism spectrum disorders.

Contact: *Deborah Layman, MM, MTC-BC, 4065 Buxton Road, S. Euclid, OH 44121-2748*

Level: Professional

5:00 pm - 6:00 pm

SALON D

AMTA Business Meeting

5:00 pm - 6:30 pm

SALON E

AMTAS Business Meeting

6:00 pm - 7:00 pm

BOARD ROOM 2

Regional Web Managers Meeting

8:00 pm - 9:00 pm

SALON D

A World of Drums - Mu Daiko in Concert

9:00 pm - 10:30 pm

SALON E, F, G

Community Drum Circle

Presenter(s): *Christine Stevens, MTC-BC*

10:30 pm

ROCHESTER

Jam Room

Saturday, November 22

6:00 am - 6:00 pm

DIRECTORS ROW 4

Meditation Room

6:30 am - 8:30 am

BALLROOM FOYER

Cash Breakfast

7:00 am - 11:30 am

COAT ROOM

Registration Desk Open

8:00 am - 9:15 am

CONRAD B, C

Regional Meeting - Western

8:00 am - 9:15 am

NICOLETT

Regional Meeting - Southwestern

8:00 am - 9:15 am

ROCHESTER

Regional Meeting - Southeastern

8:00 am - 9:15 am

CONRAD A

Regional Meeting - South Central

8:00 am - 9:15 am

SALON F

Regional Meeting - New England

8:00 am - 9:15 am

DULUTH

Regional Meeting - Midwestern

8:00 am - 9:15 am

SALON G

Regional Meeting - Mid-Atlantic

8:00 am - 9:15 am

SALON D

Regional Meeting - Great Lakes

9:00 am - 10:30 am

SALON E

Internship Fair

Presenters include: Terri Smith-Morse, MT-BC, Fairview Developmental Center; Russell E. Hilliard, PhD, LCSW, MT-BC, Hospice, Inc.; Larisa McHugh, MT-BC, Bethany Lutheran Village; Marjorie O'Konski, MME, MT-BC, Lexington Park Nursing Facility; Flossie Ierardi, MT-BC, Kardon Institute for Arts Therapy; Donna W. Polen, MT-BC, Finger Lakes DDSO - Tymeson Center; Deborah Colvenbach MT-BC, New Avenues to Independence, Inc.; Ellen Rayfield, MT-BC, Psychiatric Clinical Research Center/UIC; Barbara Reuer, PhD, MT-BC, MusicWorx of California

9:00 am - 4:30 pm

SALON A, B, C

Exhibits

9:00 am - 4:30 pm

DIRECTORS ROW 2

AMTA Village

9:30 am - 10:30 am

CARVER

Developing Criteria for Sedative Music Based on Predictable Musical Elements

Presenter(s): *Jeff Hooper*

This paper examines criteria already used to categorize sedative music before putting forward new criteria based on the presence of specifically defined predictable musical elements. It continues with a study that used the new criteria to determine suitable sedative mealtime music to be played for people with developmental disabilities.

Contact: *Jeff Hooper, Craigmill Skill Centre, Strathmartine Hospital, Dundee DD3 0PG, SCOTLAND*

Level: Professional

Session Schedule — Saturday

9:30 am - 10:30 am

HENNEPIN

Establishing a Music Therapy Program in a General Medical Hospital: The Ups and Downs

Presenter(s): Sr. Mary Margaret Delaski, MA, FSE, MT-BC; Katherine Stankiewicz, MT-BC

Presenter: Roger A. Smeltkop, MM, MT-BC
Music therapy has become more recognized as a complementary service to those with medical needs. However, the large modern hospital system changes slowly. This session will describe the process involved in initiating and developing a music therapy program in an acute care general medical hospital.

Contact: Sr. Mary Margaret Delaski, MA, FSE, MT-BC, 11630 Downes St, Lowell, MI 49331-9489

Level: Professional, Entry, Student

9:30 am - 10:30 am

CONRAD A

Experiential Learning: One Approach to the Education of Music Therapy Students

Presenter(s): Kathleen Murphy, MMT, MT-BC
Presenter: Darlene Brooks, PhD, MT-BC

This presentation will present the results of a qualitative research study that investigated the use of experiential learning. The results, including the spectrum of experiential learning methods, level of student participation, role of the educator, variables affecting the length of students' personal involvement, boundary issues, and challenges will be discussed.

Contact: Kathleen Murphy, MMT, MT-BC, 244 Watkins St., Philadelphia, PA 19148

Level: Professional

9:30 am - 10:30 am

ROCHESTER

In Harmony: A Training Model for Music Educators who Serve Students with Disabilities

Presenter(s): Nicole R. Allgood, MSED, MT-BC; Mary L. Carnahan, MT-BC; Lisa J. Fahsbender, MT-BC; Jill A. Grossardt, MT-BC; Victoria A. Storm, MT-BC

A growing number of music educators are serving students with special needs. This presentation is an overview of a model of professional development for music educators. "In Harmony: Music for All Learners" was developed by five Illinois Music Therapists and was funded in part by a Special Projects Grant

from the Great Lakes Region of AMTA.
Contact: Nicole R. Allgood, MSED, MT-BC, 211 East Quincy Street, Westmont, IL 60559-1824

Level: Professional

9:30 am - 10:30 am

CONRAD B, C

In Tandem: Music Therapy with Speech, Physical and Occupational Therapy

Presenter(s): Kimberlee Tandy, MME
Presenter: Mike D. Brownell, MME, MT-BC

Music therapy is frequently used as an adjunct therapy to speech, physical, and occupational therapy. In this hour, participants will learn about a program in which these therapies are used in tandem with music therapy. A form and method for intervention analysis and examples will be presented.

Contact: Kimberlee Tandy, MME, 1408 W 2nd Terr, Lawrence, KS 66044-4602

Level: Entry

9:30 am - 10:30 am

SALON F

Let's Sing Together - Integrated Therapy in Early Intervention

Presenter(s): Petra Kern, MT-BVM, MT-BC
Presenter: Sr. Donna Marie Beck, PhD, FAMI, MT-BC

This presentation discusses implications of music therapy as an integrated specialized service in early intervention. Clinical applications will be illustrated by introducing interventions integrating children with autism in an inclusive childcare setting. Data supporting the efficacy of this approach, advantages, and challenges for the practicing music therapist will be discussed.

Contact: Petra Kern, MT-BC, 302 St Thomas Dr., Chapel Hill, NC 27517

Level: Entry

9:30 am - 10:30 am

MARQUETTE

Music Therapy for Children Diagnosed with a Form of Attachment Disorder

Presenter(s): Debra Olson-Morrison, MSW, MT-BC

Children suffering from attachment disorder need special consideration when using music therapy. Anxiety, dissociation, hyper-arousal, and oppositional behaviors are some of the symptoms manifested by this population that can be affected by music therapy, if properly understood. Special attention will be directed at directive versus non-directive therapeutic

techniques.

Contact: Debra Olson-Morrison, MSW, MT-BC, 178 A. Street, Salt Lake City, UT 84103

Level: Professional, Entry

9:30 am - 10:30 am

CONRAD D

Music Therapy with 200 Chronically and/or Terminally Ill Individuals

Presenter(s): Lisa M. Gallagher, MA, MT-BC

This presentation will discuss the results of music therapy sessions with 200 patients with chronic and/or terminal illness. Information will be provided on assessment, evaluation, and documentation of sessions. Specific goal areas, interventions and their effectiveness, and a case study will be presented.

Contact: Lisa M. Gallagher, MA, MT-BC, 8106 Parmenter Drive, Parma, OH 44129-5351

Level: Professional

9:30 am - 10:30 am

SALON G

Psychoneuroimmunology: The Key to Wellness and the Role of Music Therapy

Presenter(s): Holly Howard, MT-BC
Presenter: Karen S. Wacks, EdM, LMHC, MT-BC

As music therapists, we find ourselves working with patients whose ailments can include cancer, stroke, diabetes, renal disease, pulmonary disease, or post-op. This presentation will explain music therapy's ability to target the psychosocial well-being of these patients and initiate the connection between mind and body, providing a foundation for wellness.

Contact: Holly Howard, MT-BC, 234 S. 2nd Street, Brooklyn, NY 11211

Level: Entry

9:30 am - 10:30 am

NICOLETT

The Legacy of Billie Holiday: Music Therapy through Song

Presenter(s): Joseph Moreno, MA, MME, MT-BC

Billie Holiday, the great Afro-American jazz singer, provided a kind of cathartic music therapy for her many listeners. This presentation will consider her therapeutic impact as a singer by analyzing her life, struggles, music, psychological implications, and performances.

Contact: Joseph Moreno, MA, MME, MT-BC, 40 N. Kings Hwy. #97, St Louis, MO 63108

Level: Professional

Session Schedule — Saturday

9:30 am - 10:30 am

LA SALLE

The Use of the Somatron for Health: Meeting a Wide Spectrum of Needs

Presenter(s): Chesley S. Mercado, EdD, MTC-BC; Eduardo S. Mercado, Jr., MPA, NHA

The Somatron has applications for a wide range of needs. Case studies of nursing facility residents with psychiatric disorders ranging from vegetative states of functioning to high levels of agitation will be presented. Examples of how the Somatron is being used on a university campus for students and faculty will be presented.

Contact: Chesley S. Mercado, EdD, MTC-BC, 118 Nature Creek Trail SW, Milledgeville, GA 31061-3653

Level: Entry

9:30 am - 10:30 am

SALON D

Travelin' On: Effective Contract Music Therapy Programs for Elderly Persons

Presenter(s): Lorie Ludwig, MTC-BC
Presenter: Elizabeth L. Brandt, MTC-BC

This presentation will focus on creating versatile, portable music therapy programs successfully used by a contract music therapist in private pay assisted living homes for the elderly with dementia. Session includes handouts, practical ideas to create holistic, seasonal programs, and a demonstration of sensory items that encourage resident participation.

Contact: Lorie Ludwig, MTC-BC, 4028 Fordham Dr NE, St. Anthony, MN 55421

Level: Entry

9:30 am - 11:00 am

BOARD ROOM 3

Executive Board Meeting

10:45 am - 12:15 pm

CARVER

Ah! I Need an Internship

Presenter(s): Erin B. Salez, MTC-BC; Karla Schwermann

Have you been avoiding the internship selection process? Are there questions that you have always wanted to ask but never had the opportunity? Here, we will help you turn that internship foe into a friend by discussing the options, advantages, and drawbacks to both the AMTA approved and university affiliated sites.

Contact: Erin B. Salez, MTC-BC, 264 Greene St., North Andover, MA 01845

Level: Student

10:45 am - 12:15 pm

SYMPHONY

Fundamentals of Implementing Clinical Music Therapy Services plus the Development of Music Programming within a Pediatric Hospital Utilizing a Continuous Quality Improvement Model

Presenter(s): Allison G. Ebberts, MME, MTC-BC

Over a twelve month period, the music therapy needs of pediatric patients and their families being treated at Children's Mercy Hospitals and Clinics were addressed by utilizing a Continuous Quality Improvement Model. This model supports ongoing measurement of patient care and services in clinical and support processes, plus facilitates the implementation and evaluation of improvements. Results from quarterly reports will be shared that outline a referral system for priority patients, plus the development of music resources and music programming that could take place in both inpatient and outpatient medical settings.

Contact: Allison G. Ebberts, MME, MTC-BC, 4528 Silverheel Street, Shawnee, KS 66226-3931

Level: Professional

10:45 am - 12:15 pm

HENNEPIN

Graduate Curricula in Music Therapy

Presenter(s): Shannon K. del'Etoile, PhD, MTC-BC; Edward A. Roth, MM, NMT, MTC-BC

This roundtable discussion will provide music therapy educators the opportunity to exchange information and explore issues relevant to graduate curricula in music therapy. Topics include course requirements for graduate programs, meeting NASM and AMTA standards, and university procedures for curricula revisions. Participants are encouraged to bring materials and discuss their own curricula.

Contact: Shannon K. del'Etoile, PhD, MTC-BC, 719 Biltmore Way, #11, Coral Gables, FL 33134-7547

Level: Professional

10:45 am - 12:15 pm

SALON F

Integrating Music Therapy, Speech Therapy and Occupational Therapy Techniques to Teach Children with Autism Spectrum Disorders

Presenter(s): Deanna Amborn, CCC, Educ. SLP; Beth A. Susag, MA, MTC-BC

Participants will learn how to integrate music therapy, speech therapy, and occupational therapy techniques to help facilitate

communication through music and movement, teach "wh" questions, vocabulary, and sentence structure to children with Autism Spectrum Disorders.

Contact: Beth A. Susag, MA, MTC-BC, 1616 Fremont Avenue, St. Paul, MN 55106

Level: Professional

10:45 am - 12:15 pm

NICOLETT

Javanese Gamelan Music in Music Therapy

Presenter(s): Bridget A. Donk, MA, MTC-BC

This presentation will focus on applications of Javanese gamelan music in music therapy with an emphasis on therapeutic implications for neurological development, motor skills, coordination, and social skills. Participants will have an opportunity to play on a gamelan that was imported from Indonesia.

Contact: Bridget A. Donk, MA, MTC-BC, 4924 Columbus Avenue South, Minneapolis, MN 55417

Level: Professional

10:45 am - 12:15 pm

CONRAD B, C

Music Therapy and a Language/Cognitive Development Approach for Young Children with Autism Spectrum Disorders

Presenter(s): Marcia E. Humpal, MEd, MTC-BC

This session will describe a classroom program for young children with autism spectrum disorders based on the Miller method, a language and cognitive developmental approach. The role of the music therapist as an interdisciplinary team member as well as implications for applying specific strategies in other settings will be explored.

Contact: Marcia E. Humpal, MEd, MTC-BC, 26798 Mangrove Lane, Olmsted Falls, OH 44138

Level: Professional

10:45 am - 12:15 pm

LA SALLE

Music, Ritual, and Life: The Path of Structure and Freedom in Music and Music Therapy

Presenter(s): Kenneth S. Aigen, DA, NRMTC, MTC-BC

In this presentation, presenters will discuss forms of structure and freedom, and the unique ways of moving between them that characterize improvisational music and improvisational music therapy. A model of the music therapy process will be presented that is based on the enhanced sense of self

Session Schedule — Saturday

that results from experiences of musical freedom.

Contact: *Kenneth S. Aigen, DA, NRMTC, MTC-BC, 50 Hudson Street, Hastings-on-Hudson, NY 10706*

Level: Professional

10:45 am - 12:15 pm

CONRAD D

Rap Music: The Metaphor

Presenter(s): *Bethany L. Cook, MTC-BC*

Presenter: *Kathryn Brosseau, MTC-BC*

This session will briefly discuss the origins of rap music, explore the therapeutic metaphor behind the lyrics, and present a case study. Time will be allotted for a question and answer period at the end of the session.

Contact: *Bethany L. Cook, MTC-BC, 1435 W. Olive Ave., Apt. 3, Chicago, IL 60660*

Level: Entry

10:45 am - 12:15 pm

ROCHESTER

Research and Clinical Retrospectives on Music and Hearing Loss

Presenter(s): *Alice-Ann Darrow, PhD, MTC-BC, Kate S. Gfeller, PhD, RMT*

This presentation includes a retrospective of two decades of research regarding music perception and enjoyment of persons with hearing loss and clinical implications that emerge from these findings. The diversity of cultural values, educational, and therapeutic issues related to hearing loss will be highlighted.

Contact: *Kate E. Gfeller, PhD, RMT, 1 Oak Park Court, Iowa City, IA 52246*

Level: Entry

10:45 am - 12:15 pm

SALON D

Robin Spielberg - Musical Intention: Conveying Emotion through Song

Presenter(s): *Robin Spielberg*

Presenter: *Tamara W. Zavislan, MME, MTC-BC*

Through performance, seminar, and audience participation, contemporary pianist/composer Robin Spielberg will demonstrate identifying 'the emotional backbone' of a song. Contemporary popular music, recognizable standards as well as original pieces by the artist, will be used to explore how artists and composers communicate emotion through composition and performance. Using music as the 'script' and the musician as the 'actor', Ms. Spielberg will perform several interpretations of pieces to communicate actions that are suggested by the audience. With the help of the participants, a new

original piece will be composed using techniques discussed during the session.

Contact: *Robin Spielberg, POB 43158, Upper Merion, NJ 07043*

10:45 am - 12:15 pm

MARQUETTE

The Fultz Fund Lecture: Use of Music Therapy to Ameliorate Symptoms Associated with Radiation Therapy

Presenter(s): *Michael E. Clark, MME, MTC-BC; Gloria Isaacks-Downton, MTC-BC; Nancy Wells, DNSc, RN*

Patients at a large teaching hospital, undergoing radiation therapy for various types of cancer, were randomized into experimental and control groups. Experimental group members received a music therapy consultation and individually-programmed recorded music. Music therapy patients performed significantly better on several of the outcome measures. Statistical and anecdotal information will be provided.

Contact: *Michael E. Clark, MME, MTC-BC, P.O. Box 1209, Cookeville, TN 38503-1209*

10:45 am - 12:15 pm

CONRAD A

The Use of Information Technology in Music Therapy Training

Presenter(s): *Joke Bradt, PhD, MTC-BC*

This presentation will speak to the use of web-based technology tools in the training of music therapy students. This presentation is aimed at (a) demonstrating ways to help implement these emerging technologies in the music therapy classroom and (b) providing evidence that information technology can greatly enrich the learning of music therapy students.

Contact: *Joke Bradt, PhD, MTC-BC, 532 Heritage Oak, Yardley, PA 19067*

Level: Professional

10:45 am - 12:15 pm

SALON G

Yeah, I Can Grow! Principal Concepts of Child Development

Presenter(s): *Varvara Pasiali, MME, MTC-BC*

Presenter: *Alice-Ann Darrow, PhD, MTC-BC*

The presenter will (a) give a detailed description of different developmental areas and children's essential needs, (b) distribute developmental checklists, (c) discuss what music therapists can do to provide developmentally appropriate experiences during sessions, and (d) recommend books and materials that pertain to early childhood development.

Contact: *Varvara Pasiali, MME, MTC-BC, 2455*

Lee Blvd. #303, Cleveland Heights, OH 44118

Level: Student

10:45 am - 12:30 pm

SALON E

Job Fair

11:00 am - 1:30 pm

SALON A, B, C, DIRECTORS ROW 2

Exhibit Spectacular

11:15 am - 1:15 pm

DULUTH

Assembly of Delegates Meeting

12:00 pm - 2:00 pm

BALLROOM FOYER

Cash Lunch

12:15 pm - 1:15 pm

ROCHESTER

International Relations Networking Lunch

1:00 pm - 5:00 pm

COAT ROOM

Registration Desk Open

1:30 pm - 3:30 pm

CONRAD D

Adolescent Pregnancy and Parenting: Implications for the Application of Music Therapy

Presenter(s): *Jessica L. Shaller, MM, MTC-BC*

This presentation will address the various issues associated with adolescent pregnancy and parenting, including chronic depression and stress. A rationale for the application of music therapy will be presented along with treatment outcomes. Demonstration of therapeutic musical interventions applied within this population during clinical work will also be presented.

Contact: *Jessica L. Shaller, MM, MTC-BC, 1937 North Leavitt Street #2, Chicago, IL 60647-4455*

Level: Entry

1:30 pm - 3:30 pm

LA SALLE

Coping Strategies Across the Life-Span: Implications for Clinical Practice

Presenter(s): *Deanna Hanson Abromeit, MA, MTC-BC; Debra S. Burns, PhD, FAMT, MTC-BC; Alicia A. Clair, PhD, MTC-BC; Allison G. Ebberts, MME, MTC-BC; Sheri L. Robb, PhD, MTC-BC; Christine M. Tuden,*

Session Schedule — Saturday

MS, MTC-BC

Coping strategies employed by children, adolescents, and adults are heavily influenced by cognitive and psychosocial development. This session will provide an overview of research literature that examines relationships between human development, perceptions of illness/disease, and utilization of coping strategies. Emphasis will be placed on appropriate selection of treatment interventions with videotaped case examples.

Contact: Sheri L. Robb, PhD, MTC-BC, 5408 W. 132nd Terrace, Overland Park, KS 66209-3439

Level: Professional

1:30 pm - 3:30 pm

SALON D

Developing the Musical Self of the Music Therapist

Presenter(s): Brian Abrams, PhD, FAMJ, LPC, MTC-BC; Julie A. Abrams, MMT, MTC-BC

In this workshop, participants will explore the significance of developing their musical selves, or their own unique relationships to music as listener, performer, improviser, and composer, and how each of these relate to their work as music therapy professionals. Exploration will take place through discussions and demonstration.

Contact: Brian Abrams, PhD, FAMJ, LPC, MTC-BC, 11 North A St., Apt. #41, Salt Lake City, UT 84111

Level: Professional, Entry

1:30 pm - 3:30 pm

CONRAD A

From Structure to Freedom: The Use of Improvisation for Children with Autism in a Special Education Setting

Presenter(s): Nicole R. Allgood, MEd, MTC-BC

This session will present a model for using clinical improvisation with children with Autism Spectrum Disorders in a special education setting. Techniques, potential goal areas, clinical reasoning, and case examples will be provided. Results from an action research project will also be shared.

Contact: Nicole R. Allgood, MEd, MTC-BC, 211 East Quincy Street, Westmont, IL 60559-1824

Level: Professional

1:30 pm - 3:30 pm

MARQUETTE

How To Successfully Apply Biomedical Music Therapy in Professional Practice

Presenter(s): Robin Palmer Blue, MTC-BC; Brenna

Breecroft, Virginia A. Darnell, MTC-BC; Diane L. Knight, MS, MTC-BC; Dale B. Taylor, PhD, MTC-BC

Presenter: Leslie A. Henry, MTC-BC

Participants will be shown how the Biomedical Theory of Music Therapy can contribute to and enhance the success of professional music therapy practice. Panelists will describe successful applications of the theory in communicating with referring physicians, other medical staff, administrators, parents, students, government and private insurance agencies, and potential employers.

Contact: Dale B. Taylor, PhD, MTC-BC, 1613 Sunrise Lane, Eau Claire, WI 54703

Level: Professional

1:30 pm - 3:30 pm

SALON G

Mallets, Movement, and More: Using Orff Schulwerk with Middle School-Aged Children

Presenter(s): Cynthia M. Colwell, PhD, MTC-BC; Kimberly Van Weelden, PhD

Presenter: Alice Ann Darrow, PhD, MTC-BC

This presentation will provide an overview of Orff Schulwerk principles as well as experiences involving movement, speech poems, body percussion, singing, and pitched and unpitched percussion instruments, providing a repertoire of activities specifically developed for middle school-aged children. Transfers to a variety of music therapy settings will be discussed throughout.

Contact: Kimberly Van Weelden, PhD, School of Music, The Florida State University, Tallahassee, FL 32306

Level: Entry

1:30 pm - 3:30 pm

ROCHESTER

Music in Motion: Unfolding Music Therapy into the Corners of a Medical Institution

Presenter(s): Courtney Brez, MMT, MTC-BC; Deforia Lane, PhD, MTC-BC; Leslie D. Meadows, MTC-BC; Erica Steinweg

In an arena geared toward observable results, a focus on holistic care of patients and their families is difficult, yet not impossible. This session will describe the development and maintenance of a therapeutic milieu, utilizing music therapy and movement as its core, in a prestigious research hospital.

Contact: Leslie D. Meadows, MTC-BC, 790 Lindenwood Ln., Medina, OH 44256-1619

Level: Professional, Entry

1:30 pm - 3:30 pm

DULUTH

Music Therapy Ethics, More than Confidentiality

Presenter(s): Deborah S. Bates, MTC-BC; Carol L. Shultis, MEd, FAMJ, MTC-BC

Most music therapists are familiar with the importance of confidentiality and work to safeguard rights of clients. What about other ethical issues facing music therapists on a daily basis: informed consent, dual relationships? How do our own values influence personal beliefs about ethics? What are the implications of these areas to our clinical work?

Contact: Deborah S. Bates, MTC-BC, 4254 Bridgewater Pkwy., Apt. #203, Stow, OH 44224

Level: Professional, Entry, Student

1:30 pm - 3:30 pm

HENNEPIN

Music Therapy in the NICU: The Significance of Lullaby

Presenter(s): Micheline Charpie, MA-MTC; Jonnue Coewy, DA, MTC-BC

Presenter: Ji Sun Kim

When new babies come into the world there is physical and emotional fragility. The lullaby is a place of rhythmic synchrony and emotional communication that is composed of simple rounds, repetitive patterns, and slow rhythms. This presentation will explain concepts of the lullaby that can foster communication between parent and child.

Contact: Micheline Charpie, 30 West 70th Street #5B, New York, NY 10023

1:30 pm - 3:30 pm

SYMPHONY

Musixspa: The Business of Music for Wellness

Presenter(s): Susan Hess, MA, FAMJ, MTC-BC

Presenter: Laurie Rugestein, MMT, LPC, MTC-BC

How can music therapy be provided for people seeking increased health and wellness? This presentation covers a business and therapeutic approach to community music therapy and discusses theoretical frameworks, therapeutic goals, session plans, marketing, and logistics. Examples are given from Musixspa, a working model of music for wellness in Denver, Colorado.

Contact: Susan Hess, MA, FAMJ, MTC-BC, 2208 S Clayton St, Denver, CO 80210

Level: Entry

Session Schedule — Saturday

1:30 pm - 3:30 pm

SALON E

Research Poster Session

1:30 pm - 3:30 pm

CARVER

Role of Music with Persons Facing Death, their Music Therapists, and Caregivers

Presenter(s): Jessica Johnson, Sally Johnson, RN, Lee Anna Rasar, MME, WMTA, MT-BC

Presenter: Jessica M. Lichty, MT-BC

This presentation will examine the roles of music for patients who are facing death, for their music therapists, and for their caregivers. End of life issues, pain management, care for the caregiver, music for the death experience, music for funerals, and music for grief support will be explored.

Contact: Lee Anna Rasar, MME, WMTA, MT-BC, 2621 Winsor Drive, Eau Claire, WI 54703-1778

Level: Professional

1:30 pm - 3:30 pm

NICOLETT

Sounds in the World: An Exploration of International Musical Styles

Presenter(s): Noah S. Shapiro, MA, MT-BC

Familiarity with different kinds of music from around the world is a helpful tool in the practice of music therapy. In this presentation we will explore and compare various musical practices and styles from different cultures, participate in active music making, and discuss implications for music therapy.

Contact: Noah S. Shapiro, MA, MT-BC, 55 Morton St., 5K, New York, NY 10014

Level: Professional

1:30 pm - 3:30 pm

CONRAD B, C

The Art and Heart of Drum Circles

Presenter(s): Christine Stevens, MT-BC

This experiential workshop will explore the two parallel elements of drum circles: The artistic and musical side and the heart-felt transformation that is achievable through drum circles. Participants will practice key body cues utilized in facilitating recreational and HealthRHYTHMS™ drum circles. REMO Sound Shapes™ and world percussion used.

Contact: Christine Stevens, MT-BC, 28101 Industry Drive, Valencia, CA 91355

1:30 pm - 3:30 pm

SALON F

Tone Bar Chimes Techniques for Diverse Groups: Solo, Multiple and Intergenerational

Presenter(s): Marjorie O'Konski, MME, MT-BC

Successful tone bar chime ensembles help participants meet music therapy goals and provide an effective marketing tool. Attendees will learn strategies for selecting, arranging, and rehearsing pieces for solo ensembles, multiple groups, and intergenerational performers. Handouts and follow up networking will be available.

Contact: Marjorie O'Konski, MME, MT-BC, 3912 SW 39th St, Topeka, KS 66610

Level: Professional

1:30 pm - 4:30 pm

SALON A, B, C

Exhibits

1:30 pm - 5:15 pm

BOARD ROOM 3

Education and Training Advisory Board

3:45 pm - 5:15 pm

CONRAD A

A Technology/Web-Based Approach to Addressing the Competencies in Music Therapy Education and Clinical Training

Presenter(s): Paul Becker, B.Sc., Joni Milgram-Luterman, PhD, MT-BC

Presenter: David W. Luce, PhD, MT-BC

A technology-based solution is proposed to address music therapy competency-based education and training. The system provides a repository for educational materials, a means of enhancing communication, and standardizing the tracking of student progress. Music therapy educators and clinical directors will have the opportunity to preview a prototype of the program.

Contact: Joni Milgram-Luterman, PhD, MT-BC, 35 Hemlock Hill, Orchard Park, NY 14127

Level: Professional

3:45 pm - 5:15 pm

NICOLETT

A Union of Opposites: Participation and Resistiveness in Nordoff-Robbins Music Therapy

Presenter(s): David Marcus, MM, MA, NRMTC, CMT

Creative Music Therapy's evaluation scales provide psychological insight, perceptual training, taxonomy of musical behavior, and

ways of evaluating both client and therapist. They balance the method's musical creativity with meticulous documentation and analysis. This presentation explores these facets through case material, videotaped excerpts, and references to the newly revised CMT.

Contact: David Marcus, MM, MA, NRMTC, CMT, 2350 Broadway, New York, NY 10024

Level: Professional

3:45 pm - 5:15 pm

ROCHESTER

Challenging Behaviors and Children with Autism, Implications for the Music Therapy Setting

Presenter(s): Carol A. Affholder, MS, RMT, Melanie Harms, MT-BC

Presenter: Jennifer M. Fiore

The purpose of this presentation is for participants to gain an understanding of autism as it relates to behavior, increase their knowledge of the different functions of behavior, and to become familiar with the various phases within the continuum of behaviors.

Contact: Melanie Harms, MT-BC, 13631 King Street Apt. 1228, Overland Park, KS 66221-8129

Level: Entry

3:45 pm - 5:15 pm

CARVER

Chinese Music Therapy: Applications of Asian Music, Philosophies in Clinical Settings

Presenter(s): Roberta S. Kagin, MME, MT-BC

Presenter: Bridget A. Donk, MA, MT-BC

This presentation is a description of the Academic Week of International Music Education in Beijing in March 2003. An overview of Chinese instruments and philosophies with suggestions for use in clinical settings will be included. Similarities and differences in music therapy training between China and the U.S. will be discussed.

Contact: Roberta S. Kagin, MME, MT-BC, 150 W. Minnehaha Pkwy, Minneapolis, MN 55419

Level: Professional, Entry

3:45 pm - 5:15 pm

CONRAD D

Heart Songs: The Use of Native American Flute in Music Therapy

Presenter(s): Christian L. Nilsen, MT-BC

Presenter: Dawn McDougal Miller, MME, MT-BC

The Native American flute is a traditional

Session Schedule — Saturday, Sunday

improvisational and meditative instrument of the woodland nations of American Indians. It is played in the moment and from the heart and has a strong power to touch the emotions of listeners and create imagery. It has many applications in music therapy.

Contact: Christian L. Nielsen, MTC-BC, 9908 State Highway 25 SW, Watertown, MN 55388

Level: Professional, Entry, Student

3:45 pm - 5:15 pm

DULUTH

Individuals with Disabilities Education Act (IDEA) Reauthorization Legislative Update

Presenter(s): Judy Simpson, MHP, MTC-BC

This session will focus on AMTA's legislative work over the last 18 months in seeking inclusion of music therapy within the IDEA reauthorization bills. Current status of congressional action regarding this legislation and implications for future advocacy will be discussed.

Contact: Judy Simpson, MHP, MTC-BC, 8455 Colesville Road, Suite 1000, Silver Spring, MD 20910

3:45 pm - 5:15 pm

SALON G

Innovative Group Music Therapy Interventions for Persons with Severe Mental Illnesses

Presenter(s): Michael J. Silverman, MM, MTC-BC

In this session, presenters will discuss and demonstrate innovative and successful interventions for persons with severe mental illnesses. Participants will be encouraged to share their own unique ideas so that all attending will leave with an excess of fresh ideas to implement into their clinical practice.

Contact: Michael J. Silverman, MM, MTC-BC, 4600 Seton Center Parkway, Apt. 312, Austin, TX 78759-5253

Level: Professional, Entry

3:45 pm - 5:15 pm

LA SALLE

Lights, Camera, Satisfaction! The Therapeutic Benefits of Performing

Presenter(s): Edgar J. Hines, MTC-BC; Lalah Manly, MM, MTC-BC; Emily K. Smith, MTC-BC; Amber S. Weldon-Stephens, EdS, MTC-BC; Missy C. Worden, MM, MTC-BC
Presenter: Sandra L. Curtis, PhD, MTC-BC

From small classroom performances to all county evening events, participants will learn how to develop a program that will highlight

any group. A discussion of activities, props, and scenery that are proven successes will be coupled with including regular education students as a part of the entire performance.

Contact: Amber S. Weldon-Stephens, EdS, MTC-BC, 1842 Condor Drive, Marietta, GA 30066

Level: Entry

3:45 pm - 5:15 pm

SALON D

Music Interventions for Preschoolers with Visual Impairments: Raising Questions about Music, Arousal and Attention

Presenter(s): Sheri L. Robb, PhD, MTC-BC

Through their Expanded Core Curriculum, the National Agenda advocates that concepts learned incidentally by sighted students must be taught in a systematic manner for students with visual impairments. Vision goggles and experiential exercises will familiarize participants with several vision disorders and outcomes from a clinical research study will be shared.

Contact: Sheri L. Robb, PhD, MTC-BC, 5408 W. 132nd Terrace, Overland Park, KS 66209-3439

Level: Professional

3:45 pm - 5:15 pm

MARQUETTE

Music Therapy Groups vs. Individual Sessions: Determining Placement and Treatment Strategies for Adults with Developmental Disabilities

Presenter(s): Sharon R. Boyle, MM, MTC-BC; Nina S. Galerstein, MME, MTC-BC

Presenter: Marie Di Giammarino, EdD, MTC-BC

Presenters will address how to determine appropriate music therapy services for adults with mental retardation and developmental disabilities with varied levels of functioning ability. Various disabilities/needs of adults with MRDD, the differences between individual and group therapy, how to determine appropriate placement, specific goal areas, and adaptations will be discussed.

Contact: Sharon R. Boyle, MM, MTC-BC, 1926 S. 5th Street, Terre Haute, IN 47802-1906

Level: Entry, Student

3:45 pm - 5:15 pm

SALON F

The Use of Music Therapy in Providing Pediatric Procedural Support

Presenter(s): Nicole Briggs, MTC-BC; Amy Kendelhardt, MM, MTC-BC

This presentation will provide an introduction

and overview of the use of music therapy in providing pediatric procedural support services such as CT scans, echocardiograms, intravenous starts, and other procedures. Techniques, interventions, and tips on working in this specialized environment, and a rationale for these services emphasizing cost effectiveness will be presented.

Contact: Nicole Briggs, MTC-BC, 4611 Old Cheney Rd., Apt. 15, Lincoln, NE 68516

Level: Entry

5:30 pm - 6:30 pm

SALON D

AMTA Business Meeting

5:30 pm - 6:30 pm

SALON F

AMTAS Business Meeting

6:30 pm - 7:00 pm

ROCHESTER

Meet the Candidates

9:00 pm - 1:00 am

CARVER'S RESTAURANT

Cabaret

Sunday, November 23

6:00 am - 6:00 pm

DIRECTORS ROW 4

Meditation Room

6:30 am - 8:30 am

BALLROOM FOYER

Cash Breakfast

7:00 am - 8:00 am

DULUTH

Assembly of Delegates Elect Meeting

7:00 am - 2:00 pm

COAT ROOM

Registration Desk Open

8:00 am - 9:30 am

SALON F

AMTA Ethics Board Roundtable: Advanced Technology and Music Therapy: What the Code of Ethics Doesn't Say

Presenter(s): Deborah S. Kates, MTC-BC; Linda A. Bosse, MTC-BC; Nicki S. Cohen, PhD, FAMJ, MTC-BC; Tina Haynes, MTC-BC; David W. Luce, PhD, MTC-BC; Lisa R.

Session Schedule — Sunday

Summer, MCA, MT-BC

Advances in technology, such as computers, cell phones, and the Internet, have changed how music therapists carry out their day-to-day work. Join us in this roundtable discussion where we will explore ethical issues involved with use of advanced technology in music therapy practice and how the AMTA Code of Ethics is influenced.

Contact: Deborah S. Bates, MT-BC, 4254
Bridgewater Pkwy., Apt. #203, Stow, OH
44224

Level: Professional, Entry, Student

8:00 am - 9:30 am

NICOLETT

Assessment Applications and Interventions Based on Developmental Milestones for the Music Therapist

Presenter(s): Elizabeth A. Hampshire, MT-BC,
Angela M. Negri, MT-BC

Presenter: Rebecca D. Blanchard, MT-BC

This presentation will outline the typical skills acquired by children from birth to age 5 in all domains. Music therapy assessment applications and interventions for early childhood will be reviewed. The interpretation of this data to describe client skill levels will be discussed. Techniques will be demonstrated through audience participation and videotape examples.

Contact: Elizabeth A. Hampshire, MT-BC, 1600
Onkfield Lane, Roswell, GA 30075-3018

Level: Entry, Student

8:00 am - 9:30 am

ROCHESTER

I Want That Job! The Art of Applying and Interviewing

Presenter(s): Paulette Milewski, MT-BC

As unemployment rates increase so does the number of people applying for your dream job. How do you stand out above the rest? Showcasing your skills in a professional and concise fashion is essential. In this session presenters will review networking, phone etiquette, letter writing, resume writing, interviewing, and negotiating offers.

Contact: Paulette Milewski, MT-BC, 941 22nd
Avenue, Apt. 10, Coralville, IA 52241-
1543

Level: Professional, Entry, Student

8:00 am - 9:30 am

CARVER

Music Therapy for Childbirth

Presenter(s): Kimberlee Tandy, MME

Presenter: Claire M. Ghetti, MME, CELLS.

MT-BC

Music therapy is an up-and-coming tool for use by women in childbirth. This program will discuss the current research in this field and methods for using music before, during, and after the birthing experience.

Contact: Kimberlee Tandy, MME, 1408 W 2nd
Terr, Lawrence, KS 66044-4602

Level: Entry

8:00 am - 9:30 am

DULUTH

Music Therapy in Medical Settings: Gathering Quality Outcome Data in Everyday Work

Presenter(s): Barbara L. Reuer, PhD, MT-BC,
Kimberly Sena

Presenter: Theresa Chardos

This presentation will describe music therapy services in a medical setting and show ways to gather quality outcome data through a documentation system developed by the presenters. Over six year's worth of data (10,000+ patients) has been collected and analyzed for types of music therapy interventions and outcomes attained.

Contact: Kimberly Sena, 413 N. Cleveland, Apt.
1, Loveland, CO 80537

Level: Professional, Entry

8:00 am - 9:30 am

MARQUETTE

Music Therapy in Palliative Care: Searching for Life's Value, Purpose and Meaning

Presenter(s): Joey Walker, MA, MT-BC

Presenter: Katherine J. Schellin, MT-BC

This presentation provides a background and overview on how music therapy is used in palliative care. Music therapy goals that help improve quality of life will be addressed. Concepts of how to help patients as well as ourselves find a sense of meaning, purpose, and value in life will be presented.

Contact: Joey Walker, MA, MT-BC, 882 Park
Place, Iowa City, IA 52246

Level: Professional

8:00 am - 9:30 am

SALON E

Music Therapy Model Demonstration Program for Adult Day Healthcare

Presenter(s): Jane Kauknecht, BS, John P. Foley,
MS, MT-BC; Abby Frouheiser, Anne W.
Lipe, PhD, MT-BC; Michael J. Rohrbacher,
PhD, MT-BC; Suzanne M. Rohrbacher,
MM, MT-BC

This presentation will report on outcomes of

a model demonstration grant from the Administration on Aging to the Adult Care Center of the Northern Shenandoah Valley, Inc. Specifically, protocol for music therapy in day programs for persons with probable Alzheimer's disease and related disorders will be presented.

Contact: Michael J. Rohrbacher, PhD, MT-BC,
102 Russelcroft Road, Winchester, VA
22601

Level: Entry

8:00 am - 9:30 am

CONRAD D

Programming Music Therapy for Pre-K Students with Disabilities

Presenter(s): Andrea Marie Cevasco, MME,
MT-BC; Meggan B. Cooper; Natalie
Generally; Roy Kennedy, PhD, MT-BC

During this experiential session the audience will participate in activities specifically designed for pre-k students with special needs. Topics include collaboration between the classroom teacher and music therapists as well as among students. Different techniques for measuring behaviors and collecting data will be included.

Contact: Roy Kennedy, PhD, MT-BC, 2091 S.
Milledge Ave., Apt. A9, Athens, GA 30605

Level: Entry

8:00 am - 9:30 am

LA SALLE

Roundtable for Educators and Internship Directors/Supervisors: Implementation of the AMTA Standards

Presenter(s): Mavis N. Mahlberg, MA, MT-BC;
Marilyn J. Sandness, MM, MT-BC

The purpose of this roundtable is to exchange information and ideas for implementation of the AMTA "Standards for Education and Clinical Training." The co-presenters will highlight various issues for group discussion with a focus on how academic faculty and internship directors/supervisors work in partnership to develop student competencies.

Contact: Marilyn J. Sandness, MM, MT-BC,
6872 Rose Glen Drive, Dayton, OH
45459-1391

Level: Professional

8:00 am - 9:30 am

CONRAD A

The Development of Music Therapy in Cyprus through Time

Presenter(s): Charilaos Papaioannou, MMT

The purpose of this paper is to describe and examine music therapy and its development through time (eight years) on the small island

Session Schedule — Sunday

of Cyprus and how the presenter succeeded in starting eight new music therapy programs.
Contact: Charilaos Papaioannou, MMT, PO Box 23331, 1681 Nicosia, CYPRUS
Level: Entry

8:00 am - 9:30 am

SALON G

The Effect of Music Therapy on Communication Skills of Children with Autism, Ages 2-3: A Pilot Study

Presenter(s): Bryan C. Hunter, PhD, MT-BC; Amy J. Thomas, MT-BC

This presentation is a report of single-subject experimental research on music therapy and early childhood autism. This endeavor was a first step in addressing the paucity of music therapy research in this area and was used to counter a rationale for discontinuing music therapy reimbursement in the Early Intervention Program of the New York State Department of Health.

Contact: Bryan C. Hunter, PhD, MT-BC, 14 Williamsburg Circle, Fairport, NY 14450-9122

Level: Professional

8:00 am - 9:30 am

CONRAD B, C

Using Music Therapy to Enhance Literacy Learning in Young Children

Presenter(s): Dena Register, MM, MT-BC

Presenter: Russell E. Hilliard, PhD, LCSW, MT-BC

With literacy learning at the forefront of education debate and reform, it is imperative to pinpoint effective strategies that will ensure student success. This research-based session will demonstrate how to plan and implement music that is developmentally appropriate and will help children develop early literacy behaviors and skills.

Contact: Dena Register, MM, MT-BC, 2420 Basswood Ln, Tallahassee, FL 32308-6283

Level: Student

9:45 am - 11:15 am

CONRAD A

An Introduction to the Use of Psychodynamic Thinking in Music Therapy

Presenter(s): Paul Nolan, MCAT, MT-BC

This presentation will describe how basic psychodynamic thinking can be applied within a music therapy session. Benefits in using this type of thinking, either as a main theoretical orientation or as part of an eclectic approach to treatment, will be demonstrated.

Participants should have some knowledge of psychodynamic theory.

Contact: Paul Nolan, MCAT, MT-BC, 5915 Pulaski Avenue, Philadelphia, PA 19144

Level: Professional, Entry

9:45 am - 11:15 am

SALON G

Creating a Music-Based Therapeutic Play Space for Children Diagnosed Along the Autistic Spectrum

Presenter(s): Bridget Landers, MT-BC; Ted Rubenstein, MRA, MA, RDT; Sarah Wiemeyer, MT-BC

This presentation will demonstrate and discuss results between two models of a music-based play space for children with autism. Results will demonstrate the ways in which creative play space can be created using improvisational and structural approaches.

Contact: Bridget Landers, 3013 Raven Street, Iowa City, IA 52245-5125

Level: Professional, Entry

9:45 am - 11:15 am

ROCHESTER

Creating a Successful Business in Music Therapy

Presenter(s): Debra K. Nielsen, MT-BC

Presenter: Carol L. Culton, PhD, MT-BC

As music therapists we are well aware of the benefits of music therapy. But how do we convince administrators to provide music therapy for their clients? This presentation will provide practical strategies for publicity, job proposals, documentation, and acquiring new music therapy contracts.

Contact: Debra K. Nielsen, MT-BC, 10 Knollwood Ct, Mason City, IA 50401

Level: Entry

9:45 am - 11:15 am

SALON E

I'm Not a Researcher, I'm a Clinician!

Presenter(s): Esther Murrow, MT-BC; Rosemary

Oliva, MT-BC; Annette M. Pleau, MAMT,

MT-BC; Ellen B. Rayfield, MT-BC; Michael

J. Silverman, MM, MT-BC

Presenter: Emily Rezek

This panel presentation by clinicians conducting research will include views of the processes involved, the pros and cons of a practicing clinician conducting clinical research, and how to do it. Additionally, there will be discussion of the specific research currently

being conducted.

Contact: Ellen B. Rayfield, MT-BC, 1614 Washington Street, Evanston, IL 60202

Level: Professional, Entry

9:45 am - 11:15 am

CONRAD D

Meta-Analysis of Music Therapy Articles Concerning Special Education

Presenter(s): Elizabeth Swaney

Presenter: James E. Borling, MM, MT-BC

Articles concerning the use of music therapy in the special education setting published in the Journal of Music Therapy, Music Therapy Perspectives, and Music Therapy have been analyzed and compiled. Areas of strengths and weaknesses will be examined. Implications of current legislation and directions for future research will be discussed.

Contact: Elizabeth Swaney, 23490 Chillicothe Pike, Williamsport, OH 43164

Level: Entry

9:45 am - 11:15 am

CARVER

National Roster Internship Update: Integrating the Revised AMTA Guidelines, Standards and Competencies

Presenter(s): Holly T. Baxter, MT-BC; Kimberly

A. Bell, MT-BC; Mavis N. Mahlberg, MA,

MT-BC; Theresa M. McManus, MT-BC

The recent implementation of the AMTA Standards for Education and Clinical Training and the National Roster Internship Guidelines affect all National Roster Internships. Understanding and integrating these changes can be challenging for busy Internship Directors. This session will give an overview of current internship guidelines and discuss compliance issues of "Grandfathered" internship settings.

Contact: Holly T. Baxter, MT-BC, 7101 Texhoma Avenue, Van Nuys, CA 91406

Level: Professional

9:45 am - 11:15 am

CONRAD B, C

Organizational Techniques for the Disorganized Music Therapist

Presenter(s): Lalah Mantly, MM, MT-BC

This session will provide disorganized students and professionals with organizational techniques that relate to clinical practice in the school, office, and conference environments. Efficient means of dealing with conference handouts will be covered, so attendees should bring current conference materials with them. Organization can be a

Session Schedule — Sunday

stress buster!
Contact: Lalah Manly, MM, MT-BC, 2669
Jefferson Terr., East Point, GA 30344-
2745
Level: Professional, Entry, Student

9:45 am - 11:15 am

NICOLETT

Our Voices, Ourselves: Embracing the Voice as Our Primary Instrument

Presenter(s): Sharon R. Boyle, MM, MT-BC
Presenter: Tracy Richardson, MS, MT-BC

Music therapists may suffer from various issues related to vocal use in therapy sessions and in daily life. Learn about the connection between the voice and the psyche, increase awareness of performance anxiety issues, and increase awareness of client vocal fears.

Contact: Sharon R. Boyle, MM, MT-BC, 1926
S. 5th Street, Terre Haute, IN 47802-
1906

Level: Professional, Entry, Student

9:45 am - 11:15 am

MARQUETTE

Passages: New England's Student and New Professional Conference

Presenter(s): Lisa Kynvi, MA, MT-BC; Karen S.
Wacks, EdM, LMHC, MT-BC

Presenter: Michele Forinash, DA, LMHC,
MT-BC

Passages is an annual music therapy conference in which all the presenters are students or professionals in their first few years of practice. This presentation describes the conference in detail, including ideas for how to start a similar conference, videotapes of past conferences, and interviews with participants.

Contact: Lisa Kynvi, MA, MT-BC, 209
Mechanic St., Marlborough, MA 01752

Level: Professional, Entry, Student

9:45 am - 11:15 am

SALON F

Revising a Music Therapy Curriculum: Challenges and Possible Solutions

Presenter(s): Gene Ann Behrens, PhD, MT-BC;
James L. Haines, PhD, MT-BC

Presenter: Ann L. Dinsmore, MREPk, MT-BC

Educators and internship directors often juggle many demands to provide the best possible training for students. The presenters will discuss how these issues impact curricula decisions and two theories about curriculum/course development that have assisted in developing courses. Breakout discussions will assist participants in applying the concepts.

Contact: Gene Ann Behrens, PhD, MT-BC, 4014

Parkside Ct, Mt Joy, PA 17552

Level: Professional, Entry

9:45 am - 11:30 am

BOARD ROOM 3

Executive Board Meeting

11:30 am - 12:30 pm

SALON D

A Magical Conference Wrap-Up

1:30 pm - 6:30 pm

MARQUETTE

CMTE V. The Process of Reimbursement

Presenter(s): Judy Simpson, MHP, MT-BC,
Molly A. Waldrup-Johnson, MT-BC

Pre-registration and fee required. When clients request that you bill their insurance company for payment of music therapy services, do you know what to do? This presentation will outline the steps necessary to pursue third party payment when these requests are received. Specific information about case management, diagnostic and procedure codes, and billing forms will be discussed.

Contact: Judy Simpson, MHP, MT-BC, 147
Blanchard Lane, Martinsburg, WV 25401

1:30 pm - 6:30 pm

CONRAD D

CMTE W. Simple Practical Guitar Styles: Tailor Your Style to Your Clients' Musical Preferences

Presenter(s): Allison Kerr, MT-BC

Presenter: Lalah Manly, MM, MT-BC

Pre-registration and fee required. Tired of that old folk strum? Want to identify with your clients' musical tastes more authentically on guitar? Know ten chords? This presentation will focus on right hand guitar strumming techniques that will provide you with a multitude of new guitar styles to relate with your clients more closely.

Contact: Allison Kerr, MT-BC, 493 Huntington
Ridge Dr., Nashville, TN 37211

Level: Entry, Student

1:30 pm - 6:30 pm

NICOLETT

CMTE X. Improvisation on a Theme: The Challenges of Research in Clinical Practice

Presenter(s): Suzanne B. Hanser, EdD, MT-BC;
Susan E. Mandel, MEd, MT-BC

Presenter: A. Louise Steele, MEd, MT-BC

Pre-registration and fee required. This workshop will present the methodology and challenges of conducting research in a clinical setting. An ongoing research study will be

presented as a protocol. Workshop participants may bring their own research questions for discussion. The objective is to foster further clinical music therapy research.

Contact: Susan E. Mandel, MEd, MT-BC,
38070 Rogers Road, Willoughby Hills, OH
44094

Level: Professional, Entry

1:30 pm - 6:30 pm

SALON E

CMTE Y. Using Dance/Movement Therapy to Enhance Music Therapy Groups

Presenter(s): Kathryn J. Larson, MA, ADTR,
MT-BC; Barbara Nordstrom-Loeb, EdM,
MFA, ADTR; Molly J. Richter, MT-BC;
Bill E. Webb, MT-BC

Presenter: Bridget A. Doak, MA, MT-BC

Pre-registration and fee required. Using Dance/Movement Therapy (DMT) structures and Laban Movement Analysis (LMA) to develop and deepen experiences that occur during music therapy groups can enhance the healing process. Participants will learn and practice relevant LMA concepts, movement/dance structures, and group improvisational processes as applicable to music therapy.

Contact: Bill E. Webb, MT-BC, 3420 45th Ave
South, Minneapolis, MN 55406-2925

Level: Professional, Entry

1:30 pm - 6:30 pm

CONRAD A

CMTE Z. Exploring Entrainment Beyond Stimulative/Sedative Music: The USE MEE Model

Presenter(s): Judith A. Pinkerton, MT-BC

Presenter: Todd D. Balcom, MT-BC

Pre-registration and fee required. The USE MEE™ Model further expands the iso-principle and entrainment mechanism, spreading stimulative and sedative music into three mood classifications utilizing unique assessments. Fifteen years of research, development, and case studies reveal benefits for populations including alcohol/drug abuse, rehabilitation, teens, geriatric, psychiatry (mood disorders), medical, and special education (emotional/behavioral disorders).

Contact: Judith A. Pinkerton, MT-BC, 501 S.
Rancho #B-11, Las Vegas, NV 89106

Level: Professional

Conference Officials

Conference Management Staff:

Executive Manager

Andrea Farbman, EdD

Conference Manager

Al Bumanis, MTC-BC

Exhibits Coordinator

Jane Creagan, MME, MTC-BC

**Graphic Designer/Administrative Services
Manager**

Angie Elkins, MTC-BC

Administrative Coordinator

Judith Kaplan, MEd

Public Relations Coordinator

Judy Simpson, MHP, MTC-BC

Registration Manager

Cindy Smith

Registration/Bookstore Assistant Manager

Rebecca Smith, BA

AMTA Bookstore Coordinator

Dianne Wawrzusin, MMTC, MTC-BC

Special Events Coordinator

Tamara Zavislan, MMGT, MTC-BC

Local Arrangements Committee:

Local Arrangements Committee Chair

Amy Greenwald Furman, MM, RMTC

Instrument Committee

Todd Schwartzberg, MTC-BC, chair

Public Relations/Outreach Committee

Kay Luedtke-Smith, MTC-BC, chair

Roberta Kagin, MME, MTC-BC

Entertainment Committee

Bill Webb, MTC-BC, co-chair

Glenn Helgeson, MEd, MTC-BC, co-chair

Volunteer Committee

Julie Osmonson, MTC-BC, co-chair

Carol Ashwood, MTC-BC, co-chair

Hospitality Committee

Becky Pansch, MTC-BC, chair

Student Committee

Bridget Doak, MA, MTC-BC, chair

Program Review Committee:

Michelle Hairston, EdD, MTC-BC

Michael Silverman, MM, MTC-BC

David Smith, PhD, MTC-BC

Barbara Wheeler, PhD, MTC-BC

Abstract Editor:

Michael Silverman, MM, MTC-BC



Exhibit Hall

Conference Exhibitors *(list complete as of publication)*

Associations/Agencies

Booth 101 Celebration Shop, Inc. **
 Booths 109-110 Certification Board for Music Therapists **
 Booth 206 Nordoff-Robbins Music Therapy Center *

Association Members

Booths 100-102 Jane Click
 Booths 100-102 Musixspa
 Booths 100-102 Christian Nielson Music Therapy Productions

Early Childhood

Booth 101 Celebration Shop, Inc. **
 Booths 204 Kindermusik International **
 Booth 208 Music Together, LLC **

Keyboard/Electronic Instruments

Booth 202 Lowery Organ Company **
 Booths 407-409 Brook Mays Music Company **

Music Companies/Publishers

Booths 103,105,107 MMB Music, Inc. **
 Booth 200 Woodwind & Brasswind *
 Booths 203,302 J.W. Pepper
 Booths 205, 207, 304,306 West Music Company **
 Booths 303,305,307,402,404,406 Music is Elementary *
 Booths 407-409 Brook Mays Music Company **

Music Therapy Resources

Booth 100-102 Jane Click
 Booth 100-102 Christina Nielsen Music Therapy Productions
 Booth 108 Kristine Theurer
 Booth 100-102 Musixspa

Percussion

Booths 201,300 REMO, Inc/ Health Rhythms **
 Booth 301 Roxy Rhythm
 Booth 410 Boing Klankoeper

Regions/Schools

Booth 106 Saint Mary of the Woods College*
 Booth 206 New York University
 Booth 209 Naropa University
 Booth 308 Lesley University
 Booth 309 Augsburg College
 Booth 408 Western Michigan U Students
 Booth 411 Mid-Atlantic Region

Sheet Music

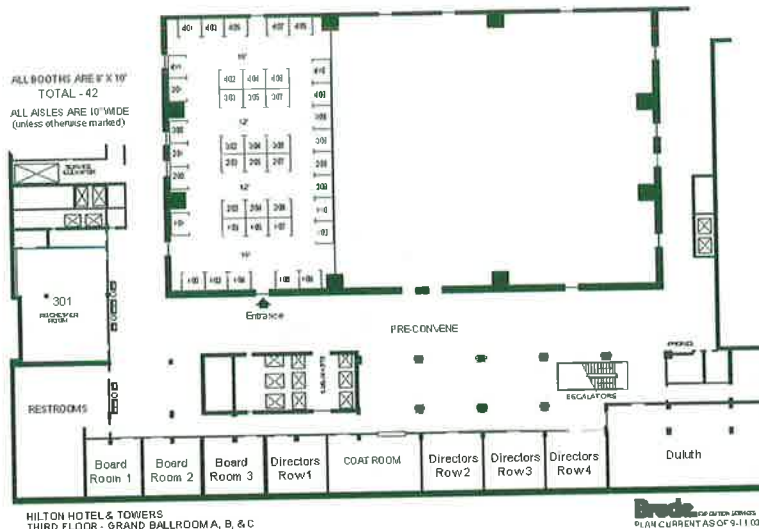
Booths 203,302 J.W. Pepper

Technology

Booths 401,403,405 Round River Research
 Booths 407,409 Brook Mays Music **

** AMTA Patron Member

* AMTA Affiliate Member



Conference Exhibitors



*Association Member Booths 100-102

(BOOTHS SHARED BY MULTIPLE MEMBERS)

*Jane Click

Products available for sale include CD- "Song Cycles for Healing," Music Book for Piano and Voice- "Song Cycles for Healing," Book of Poetry "A Road Beyond Loss-Three Cycles of Poems and an Epilogue"

Representative: Jane Click

*Musixspa

Musixspa™ is a music-for-wellness business that draws on the techniques and research from music therapy, sound healing and Ayurveda in support of a holistic approach to community music therapy. Musixspa™ offers "Sound Circles," presentations, musical instruments, books, and CDs, as well as training seminars for music therapists via www.musixspa.com.

Representative: Susan Hess

*Christian Nielson Music Therapy Productions

We offer instrumental and music assisted relaxation recordings. We are a music production company operated by a music therapist for music therapists. We also offer production services for the music therapy and healthcare communities. We can record, mix, edit, design and duplicate CD's for any sized project or budget. At the booth CD recordings by Christian Nielsen, MT-BC, and other music therapists, and Native American Flutes will be available for purchase, as well as information on a variety of production services.

Representatives: Christian Nielsen, Catherine Nielsen, Anne Nielsen

Augsburg College

BOOTH 309

Augsburg College's music therapy program is one of only two in the state of Minnesota. Established in 1974, the program places an emphasis on practical experience within the context of a rigorous liberal arts education. Graduates of the program have gone on to establish careers in leading businesses and healthcare institutions across the country. History of Augsburg program pamphlets, brochures, videotape, and recordings.

Representatives: Randall Davidson, Mandy Brobst, Paula Sobocinski, Lindsay Plocher



Boing Klangkorper

BOOTH 410

Boing Klangkorper was founded in 1982 by Ingo Boehme in Germany. It started with a small workshop, which grew and now builds over 60 different Instruments of 14 different types. Ingo is also an enthusiastic musician, who enjoys playing his own instrument, so every instrument is built with the experience of the musician and instrument maker. All of Boing Big Instruments like the singing chair, giant slit drum, monochords, and some smaller hand percussion instruments will be available for purchase.

Representative: Gabriele Schwibach

Brook Mays Music

BOOTHS 407,409

With over a hundred years of experience in the music business, Brook Mays Music has seen the need to become an innovative sponsor of a variety of programs and applications that take music and it's benefits beyond the classroom. Therefore

we are proud to share in the vision of the American Music Therapy Association. Brook Mays Music will be showing and selling 'tools of the trade,' keyboards, sequencers, drums, percussion, and guitars, etc. A complete line of music software and technology products to record, copy and burn CDs, as well as a new line of musical learning toys, will also be available.

Representatives: Julie Romeo, Daniel Tague

Celebration Shop, Inc.

BOOTH 101

Celebration Shop Inc, is a non-profit organization, which provides healing experiences for the special needs of children of all ages through performing arts and media. Jim Newton & Paul G. Hill tour children's hospitals throughout North America providing songs of healing and hope. Noel Paul Stookey (of "Peter, Paul, & Mary") is the Producer of Celebration Shop's award-winning children's resources. Celebration Shop's audio resources for children include BEST I CAN BE, WE CAN DO, and WORLD AROUND SONG. These recordings are entertaining, and comforting, and have received national and international children's music awards. They are available in both English and Spanish and in songbook form.

Representatives: Jim Newton, Jr., Paul G. Hill

Certification Board for Music Therapists (CBMT)

BOOTHS 109, 110

The Certification Board for Music Therapists certifies professional music therapists through examination, and re-certifies them every five years through a program of continuing education. Representatives will be available to answer questions and provide materials related to CBMT programs. CBMT related publications and products will be available at the booth.

Representatives: Joy Schneck, Suzanne Oliver, Celeste Behnke, Emily Darigan, Michael G. McGuire, Lee Anna Rasar, Nancy Hadsell, Diana Ice, Michele Ritholz

Conference Exhibitors

J.W. Pepper

BOOTHS 203,302

J.W. Pepper is the world's largest music retailer featuring convenient on line ordering at www.jwpepper.com. Products featured in the exhibit booth include hand drum books and resources, music therapy songbooks, CD's, and elementary and classroom products that would be of interest to music therapists working with children and the elderly.

Representatives: Michelle Gutoske, Karlie Piekola, Dave Black

Kindermusik International

BOOTH 204

We're in the business of changing the world one child at a time. Kindermusik International is the world's leading publisher of music and movement curricula for parents and their children, age's newborn to 7 years old. More than 5,000 licensed educators use the Kindermusik curricula in more than 35 countries, reaching 1 million families. More than 25 years of early childhood development research applies to every Kindermusik product. It's not about creating little Mozart's. It's about using Kindermusik's instruments, music, and more to develop skills in the whole child. To ensure success from the first day, Kindermusik provides a solid foundation with our training course Fundamentals of Kindermusik. This interactive course is designed to let you work at your own pace right in your home.

Kristine Theurer

BOOTH 108

ToneChimes and Dementia: Kristine Theurer, MTA, Canada presents: "The Bells are Ringing!" an exciting guide for using handchimes in long-term care. Kristine was an invited speaker at the 2002 Alzheimer Disease International World Conference and the 2003 European Alzheimer Society Conference. Book includes an Audio/video demonstration CD. Suzuki Tone Chimes will be available

for sale as well as Kristine's book and CD's.

Representatives: Clayton MacKay, Kristine Theurer

Lesley University

BOOTH 308

Lesley University, in Cambridge, MA offers an AMTA-approved MA in Expressive Therapies with specialization in Music, Dance, and Art Therapies, plus a PhD in Expressive Therapies.

Training is in both expressive therapies and music therapy. MA graduates are eligible for certification from CBMT and licensure as mental health counselors in Massachusetts.

Representative: Carybeth Thomas

Lowrey Organ Company

BOOTH 202

The Lowrey Organ Company offers a complete line of organs-models designed and built for the hobby player. Lowrey offers home organs for the first time player, the most sophisticated hobby player, and all points in between. Easy-play technology, lush organ sounds, authentic instrumental sounds, elegantly crafted furniture-style cabinets combine to make Lowrey the #1 name in home organs. The Lowrey "Wellness Enhanced" organ course, designed for adults, helps people discover the joy and satisfaction of making their own music. Lowrey Magic seamlessly incorporates components of the Six-Minute Module to provide class members with the opportunity to benefit from wellness activities while comfortably building musical ability and confidence.

Representative: Mel Wisniewski

Mid-Atlantic Region of AMTA

BOOTH 411

The Purpose of the Mid Atlantic Region of AMTA is to advance the use of music for restoring, maintaining, and improving mental and physical health; to train and educate music therapists; to advance and support research about music therapy; and to provide a forum for the exchange and publication of information about music therapy. Brochures will be available as

well as information related to the mission of the MAR including history and photographs.

MMB Music, Inc.

BOOTHS 103, 105, 107

A major publisher and distributor of books, videos, and recordings for the creative arts in wellness and music education including pre-and elementary school. MMB is Sole USA Agent for Studio 49 Orff instruments. MMB Music-the complete, one-stop resource for creative arts therapists. Books, videos, and recordings for the creative arts to enhance the quality of life in wellness and education will be available.

Representatives: Marcia Lee Goldberg, Norman Goldberg, Sarah Rosegrant, Susan Weber

Music Is Elementary

BOOTHS

303,305,307,402,404,406

Music Is Elementary is a provider of musical instruments and curricula for use in music therapy and music education. Music Is Elementary is a provider of Orff musical instruments, Music Therapy materials, World Music and Cultural Drumming.

Representatives: William Johnson, Sam Marchuk, Ron Guzzo, Shawn Potochar

Music Together, LLC

BOOTH 208

The Joy of Family Music since 1987! Music and Movement for Families/Infants/Toddlers/Preschoolers. Music learned through playful activity in mixed-age classes. Developmentally appropriate and research-based. Tapes, CD's, songbooks, and instrument-play materials. Teacher training offered nationwide.

Representatives: Kim Febres, Lynn Sengstack



Conference Exhibitors

Naropa University

BOOTH 209

Naropa University, located at the edge of the Rocky Mountains in Boulder, Colorado, offers a Masters Degree in Transpersonal Counseling Psychology with a concentration in Music Therapy.

Naropa focuses on a contemplative approach to learning, incorporating the rigor of academic study with the insight of contemplative practice. Brochures and other literature describing the Masters Degree Program in Music Therapy and other programs at Naropa University will be available at the exhibit booth.

Representatives: Laurie Rugenstein, Mary Erickson, Linda Flinkman

Nordoff-Robbins Center/New York University

BOOTH 206

New York University offers Masters and Doctoral degrees in music therapy. The Nordoff-Robbins Center for Music Therapy is a treatment, training, and research facility that offers post-graduate training in the Nordoff-Robbins approach. Summer courses for music therapy professionals and students, and a variety of instructional materials are available. Books, audio/video recordings, and program materials and brochures will be available at the booth.

Representatives: Kenneth Aigen, Jacqueline Birnbaum, David Marcus

Remo, Inc/Health Rhythms

BOOTHS 201,300

We believe in the therapeutic value of music. Remo is dedicated to providing facilitators, therapists, and all participants with the best quality percussion instruments available. We offer an ever-expanding line of life enhancement tools we call drums featuring world percussion, kids percussion, and drum accessories. Come by and talk with the facilitators and music therapists at our booth. A focus of this years' booth will be on sharing information about percussion, therapy, and wellness.

Representatives: Christine Stevens, Remo Belli, Ami Belli, John Scalici

Roxy Rhythm, LLC

BOOTH 301

Roxy Rhythm is both an educational and therapeutic based rhythm program. We offer high quality, low cost drums and a range of musical experiences utilizing drum facilitation and modern recording techniques. Roxy Rhythm is an award-winning program, which has produced positive results within alternative and traditional educational settings. We will exhibit the Make-A-Beat™ Drum Kits. These are hand drums you make yourself that are durable, great sounding, and at an affordable price. We will also provide interactive drum making which includes tie-dying goat skin heads, stretching and application of the drum head, and decorating. Hands on recording techniques will be set up to apply to your own drumming with a CD available of your experience.

Representatives: Roxanne Fredrickson, Todd Strandberg, Gereon Fredrickson

Round River Research Corporation

BOOTHS 401,403,405

Round River Research was formed in 1997 to research the effects of sounds and vibration on states of consciousness and health. Our work has resulted in a system and methodology for relaxation and meditation. Future medical research is being planned. The Infusion™ Acoustic Body System consists of the Infusion™ Pad and the Infusion™ Amplifier. The Infusion system provides high intensity sound/music and vibration for relaxation, meditation, and music and sound therapy. Please stop by and experience it for yourself.

Representatives: Dan Cohen, Ellen Cohen, Jason Cohen, David Cohen, Mie Cohen, Whitney Cohen, Jennifer Palmquist, Nicole Nardonne, Dave Campbell

Saint Mary of the Woods College

BOOTH 106

Saint-Mary-of-the-Woods College in Indiana offers the MA Degree in Music Therapy in a distance format (limited time on campus required). Train with experts in

Improvisation GIM, Music Psychotherapy, and counseling. Faculty and students will answer questions about SMWC's masters, equivalency, and undergraduate programs. Brochures and applications will be available at the booth.

Representatives: Tracy Richardson, Beth Cook, Kate Brosseau

West Music Company

BOOTHS 205,207,304,306

West Music offers the Music Therapist an extensive blend of books, recordings, props, and instruments. On staff music therapists develop and promote adaptive materials and provide consultation for purchases. Remo drums, Sonor Orff instruments, hand percussion, adaptive instruments, texts, songbooks, Q chords, tone chimes, and much more are available at our booth.

Representatives: Paulette Milewski, Steve West, Kyle Wilhelm, Teri Pomrehn, Lynne Doxie, Carol Olszewski, Kara Groen, Amber Cook, Jen Bistline, Jen Koch, Beth Villhauer, Margaret Roesch

WMU Student Music Therapists' Association

BOOTH 408

SMTA is a student directed organization, which exists to assist music therapy students in building foundations for future careers and enhancing educational experiences beyond the classroom. Window cling decals and tote-bags with a new design will be available at the booth.

Representatives: Christy Irwin, Shea Althoff, Becca Christensen

Woodwind & Brasswind

BOOTH 200

The Woodwind & Brasswind Music Company in South South Bend, IN, is able to provide a variety of therapy instruments, publications, and accessories for the student and the classroom. Please visit us on the web at www.wwbw.com or call us at 1-800-346-4448 for more information.

Representatives: Phyllis Kohlenberg, Scott Kautzer

Acknowledgements

Thank You a Hundred Times Over!!!

—from Conference Chair, Michelle Hairston

Planning a conference program is a job that involves the efforts of many, many people. I have had outstanding people to work with and am forever indebted to them. The Local Chair has had the brunt of the work, and without this person no Vice President could successfully plan a conference! I would like to extend my sincerest thanks to **Amy Furman**, RMT for heading up the local committee and working tirelessly to complete all of her tasks. The individual committees headed up by **Todd Schwartzberg**, **Kay Luedtke-Smith**, **Bill Webb**, **Glenn Helgeson**, **Julie Osmonson**, **Carol Ashwood**, **Becky Pansch**, and **Bridget Doak** did a fabulous job. Their hard work and dedication to music therapy has been incredible. Please give them a big thank you as you see them working around the conference.

As always, the national office continues to be a vital link to a successful conference. **Al Bumanis** was wonderful to work with and has many good ideas to share that make the Vice President's job very easy. Other office staff members, **Angie Elkins**, **Andi Farbman**, **Judy Kaplan**, **Tami Zavislan**, **Jane Creagan**, **Judy Simpson**, **Cindy Smith**, **Dianne Wawrzusin**, and **Becky Smith** are wonderful to work with and take care of myriads of details that make the conference run smoothly.

A special thanks goes to **Michael J. Silverman**, from Austin, Texan who edited all the abstracts for the final conference program. He spent an enormous amount of time making sure they were ready and accurately reflected what the sessions would cover. Also, thanks to **Barbara Wheeler**, Vice-President elect, for her willingness to help in any way that she could.

A big thank you goes to all of you who submitted proposals. Without you, there would be no conference. Thank you for sharing your expertise with other professionals and working with all of us to make the conference great!



Conference Sponsors

AMTA would like to thank the following organizations for their support of the 5th Annual AMTA Conference:

Steinway and Sons

Remo, Incorporated

West Music Company

Roland Corporation U.S.

Fender Musical Instruments

Center Stage

Honor Your friends and loved ones or celebrate life's landmark events while supporting the growth of music therapy through **Center Stage**.



Sr. Laurette Bellamy, PhD

in honor of 29 years of teaching at St. Mary-of-the-Woods College, and initiating and developing the music therapy program at SMWC

from Tracy Richardson and St. Mary-of-the-Woods College

AMTA's **Center Stage** is the perfect way to honor your friends and loved ones or celebrate life's landmark events, all while supporting the growth of music therapy. Funds donated are used to support AMTA's mission. To make your submission, please send a check for \$15 or more, the name and address of your honoree, along with your name and address and reason for the tribute to: AMTA, Center Stage, 8455 Colesville Rd., Ste. 1000, Silver Spring, MD, 20910. Tribute gifts will be acknowledged with a letter to the donor and a card to the designate as well as in Music Therapy Matters. AMTA reserves the right to accept, edit, or reject tributes for publication.

Advertisements

CALL FOR PAPERS

Moving Forward With Music Therapy
American Music Therapy Association 2004 Conference
Austin, Texas

Sessions Nov. 19 - Nov. 21, 2004 o Meetings Nov. 16 - Nov. 21, 2004 o Institutes Nov. 17, 2004 o CMTE's Nov. 18 - Nov. 21, 2004

The deadline for proposal submissions is March 15, 2004.

Please send an original with two additional copies (3 total) of the complete proposal (A through Q), using the "Proposal Form" as the cover page. Also send an original with five additional copies (6 total) which includes only the information in A through D as listed below for a "blind review" by the Conference Program Committee.

- A. TITLE OF PRESENTATION (12 words maximum)
- B. ABSTRACT (50 word maximum; appropriate for inclusion in conference program booklet)
- C. DESCRIPTION (300 word maximum; providing sufficient information concerning the proposal for the reviewers to evaluate its suitability for this year's conference. Clinical proposals should include information on assessment and documentation.
- D. BIBLIOGRAPHY (5-10 references that are relevant to the content of the presentation)

Indicate one presentation format on the Conference Proposal Form:

- Paper: Oral presentation of written material (90% didactic, 10% experiential)
- Panel/Symposium: Group of individuals speaking on facet of the same topic (90% didactic, 10% experiential)
- Roundtable: Informal presentation(s) with organizer(s) engaging all those attending the session in group discussion
- Workshop: Individual/s engaging participants in a process to gain experience and mastery over the material covered (20% didactic, 80% experiential)

*PLEASE NOTE: AV Policy

An AMTA priority is keeping conference registration fees at a reasonable rate. Reducing AV equipment costs is part of that priority. An overhead projector/screen, CD player, and audiocassette player will be provided in each session room at no cost to presenters. Additional audiovisual equipment rental is the responsibility of the presenters. Special exceptions for the Conference Committee to cover costs of VCR/monitors (approximately \$110.00) may be directed to the Committee. If you are unable to cover the costs and are making a special request, please supply a brief statement describing why a VCR/monitor is essential. Each request will be reviewed and presenters will be notified of the decision prior to the conference.

POSTER SESSIONS

- Research: Groups and/or individuals present information concerning research projects via poster display. Charts, visual aids and abstracts are used to convey information concerning the research data. (50% didactic, 50% experiential.) Send Research submissions to: Dr. Clifford Madsen, Research Committee Chair, Florida State University, School of Music, Tallahassee, Florida 32306. The deadline for Research Poster session submissions is July 16, 2004.
- Internship Fair and Public Relations Session: A presentation featuring displays of Clinical Training sites. Information used in increasing public knowledge of music therapy is also featured. Send name of display and contact information to: Al Bumanis, The Conference Committee, c/o AMTA, 8455 Colesville Rd, Suite 1000, Silver Spring, MD 20910. The deadline for Internship Fair and Public Relations Session submissions is October 8, 2004.

The Conference Program Committee will review proposals and the contact person will be notified by the end of June as to the status of the proposal. Additional information will be sent to those presenting, after that time. If you have any questions, please contact Al Bumanis at AMTA (301) 589-3300.

All submissions received by February 13th will be entered into a drawing for one free night's stay in Austin.

Please send 3 copies of the complete proposal (1 original) and 6 copies of the blind review. Please be sure to keep a copy for your files. All materials MUST be received by March 15th.

Attn: Conference Committee, c/o AMTA, 8455 Colesville Road, Suite 1000
Silver Spring, Maryland 20910 U.S.A.
Phone: (301) 589-3300 o Fax: (301) 589-5175

THE DEADLINE FOR PROPOSAL SUBMISSIONS IS MARCH 15, 2004.

2004 CONFERENCE PROPOSAL SUBMISSION FORM

Moving Forward With Music Therapy
American Music Therapy Association 2004 Conference
Austin, Texas

Sessions Nov. 19 - Nov. 21, 2004 o Meetings Nov. 16 - Nov. 21, 2004 o Institutes Nov. 17, 2004 o CMTE's Nov. 18 - Nov. 21, 2004

Please send an original with two additional copies (3 total) of the complete proposal (A through Q), using the "Proposal Form" as the cover page. Also send an original with five additional copies (6 total) which includes only the information in A through D as listed below for a "blind review" by the Conference Program Committee. Don't forget to respond, with your signature, to letter Q regarding audio/video taping. Remember to comply with copyright regulations when planning your presentation. For Research Poster Session and Internship Fair & Public Relations submissions, please see accompanying Call for Papers under "Poster Sessions" for submission details. Thank you.

- A. TITLE OF PRESENTATION (12 words maximum)
- B. ABSTRACT (50 word maximum; appropriate for inclusion in conference program booklet)
- C. DESCRIPTION (300 word maximum); providing sufficient information concerning the proposal for the reviewers to evaluate its suitability for this year's conference. Clinical proposals should include information on assessment and documentation.
- D. BIBLIOGRAPHY (5-10 references that are relevant to the content of the presentation)
- E. Presenter's names and affiliations - Please list your credentials as you would like them to appear in the program. Professional vitae required for Continuing Music Therapy Education (CMTE) course consideration.
- F. Name, address, telephone, fax, and email of contact person (one of the presenters)
- G. Mini-biography of presenters (30 word maximum per person)
- H. Format (Circle One) Paper Panel/Symposium Roundtable Workshop
- I. Would this presentation be appropriate for consideration as a 5-hour intensive and/or Continuing Music Therapy Education (CMTE) course to be scheduled before or after the conference?
(Circle One) Yes No If yes, are there any prerequisites? Please describe.
-
- J. Preferred Length (Times may need to be adjusted due to conference scheduling needs)
(Circle one) One hour 1.5 hours 2 hours
- K. Target audience (Circle One) Level 1 - students Level 2 - Entry level professionals Level 3 - Experienced professionals
- L. AV -An AMTA priority is keeping conference registration fees at a reasonable rate. Reducing AV equipment costs is part of that priority. An overhead projector/screen, CD player, and audiocassette player will be provided in each session room at no cost to presenters. Additional audiovisual equipment rental is the responsibility of the presenters. Special exceptions for the Conference Committee to cover costs of VCR/monitors (approximately \$110.00) may be directed to the Committee. If you are unable to cover the costs and are making a special request, please supply a brief statement describing why a VCR/monitor is essential. Each request will be reviewed and presenters will be notified of the decision prior to the conference.
- M. Instruments including pianos, a limited number of melodic Orff instruments, drums, and guitars will be available at the conference. The presenter must provide small percussive instruments and any additional instruments required. Conference planners reserve the right to charge for requests requiring costly rentals. (Please indicate specific instruments needed.)
- N. Name, address, email, and telephone number of person you would like to have preside. A presenter can assume the duties of the presider. Please note that a presider is optional and is not provided by the Conference Committee.
- O. Are release forms required of participants in case of potential harm arising from an experiential presentation?
(Circle One) Yes No
- P. By submitting a proposal, I am agreeing to present at any time during the conference at which my presentation is scheduled.
- Q. Please answer the following question and sign the statement below. Are you willing to have your session audio or video recorded? (Circle One) This presentation may be recorded This presentation may not be recorded.

CMTE courses are not subject to audio or videotaping. The Contact person is authorized to sign on behalf of a group of presenters for a joint proposal.

Signature _____

Date _____



Works of Heart - Songs of Hope
featuring "The Morning After"
Maureen McGovern
AMTA Celebrity Spokesperson

"Works of Heart" CD
Special Conference Price - \$16.00
Available in the AMTA Bookstore

Ms McGovern will be available for autographs

*"...a gift of hope for individuals who face
insurmountable odds with grace and courage."
- Maureen McGovern*

Established in 1998 by David's Fund to encourage, promote, and fund music therapy research and to explore new and innovative music therapy treatments

In 1998, the Arthur Flagler Fultz Research Fund was established in recognition of Rev. Arthur Flagler Fultz's contribution to music therapy and in memory of David Ott. The Research Fund was created through a contribution from David's Fund, a family foundation based in New Jersey and founded by Thomas and Lucy Ott.

The Fund grants a cash award annually to an AMTA-member music therapist for clinical research. The 2003 Award will be presented at the Annual Conference in Minneapolis.

The Arthur Flagler Fultz Research Fund

Celebrating five years of excellence in music therapy research

2002

Anne Lipe, PhD, MT-BC
Shenandoah University

"Construct validation of two music-based assessments for people with dementia"

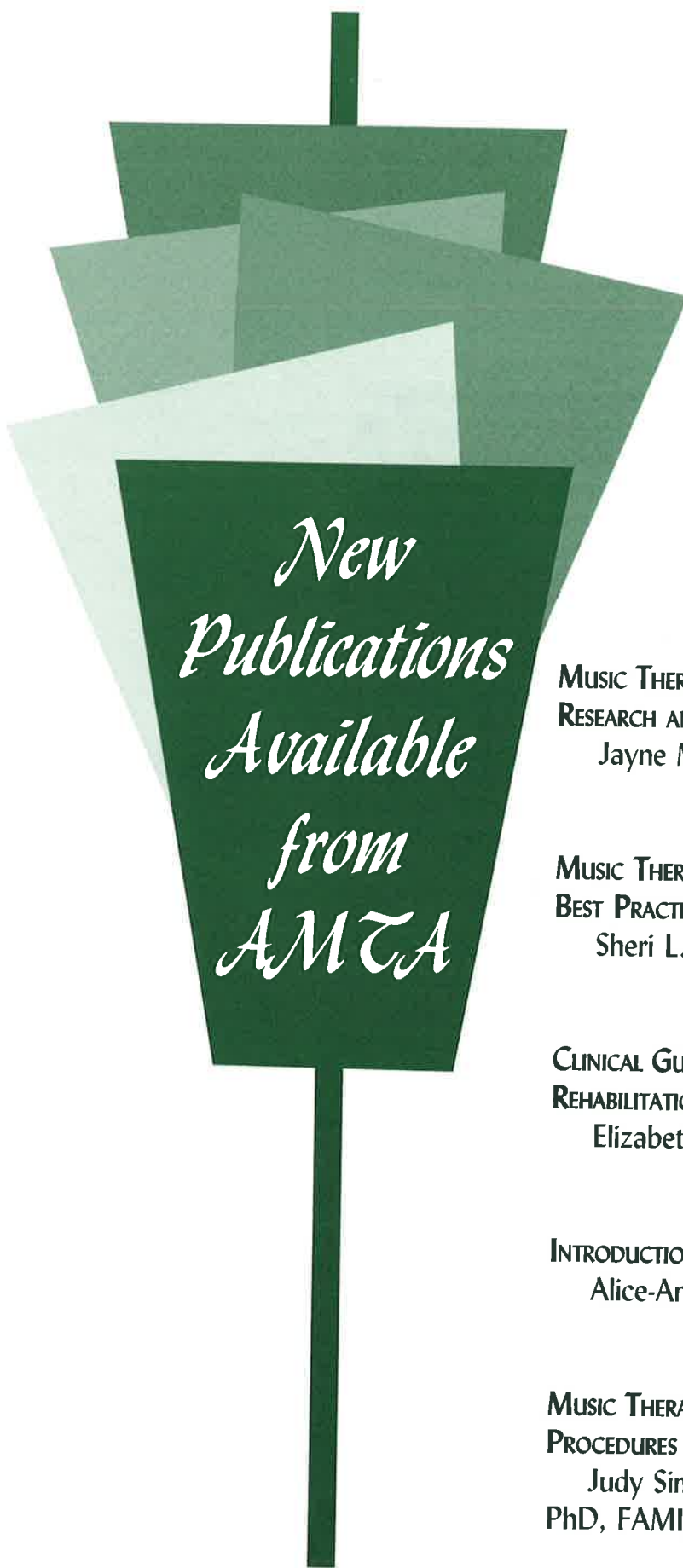
2000

Michael E. Clark, MME, MT-BC
Tennessee Technological University

"Effectiveness of music therapy in ameliorating symptoms associated with radiation therapy"

1999

Janice W. Stouffer, MT-BC
Penn State University - Milton S. Hershey Medical Center
"A comparison of music to music with mother's voice on physiological responses, level of sedation and requirements for drug therapy for critically ill infants and children"



*New
Publications
Available
from
AMTA*

*Stop by the
AMTA Village
and pick up your
copies today!*

*Conference attendees may purchase all
publications for the member price below:*

**MUSIC THERAPY WITH PREMATURE INFANTS:
RESEARCH AND DEVELOPMENTAL INTERVENTIONS**
Jayne M. Standley, PhD, MT-BC \$50

**MUSIC THERAPY IN PEDIATRIC HEALTHCARE: RESEARCH AND
BEST PRACTICES**
Sheri L. Robb, PhD, MT-BC, editor \$50

**CLINICAL GUIDE TO MUSIC THERAPY IN PHYSICAL
REHABILITATION SETTINGS**
Elizabeth H. Wong, MT-BC \$30

INTRODUCTION TO APPROACHES IN MUSIC THERAPY
Alice-Ann Darrow, PhD, MT-BC, editor \$50

**MUSIC THERAPY REIMBURSEMENT: BEST PRACTICES AND
PROCEDURES**
Judy Simpson, MHP, MT-BC; Debra S. Burns,
PhD, FAMI, MT-BC \$40



DUQUESNE
UNIVERSITY

MARY PAPPERT SCHOOL OF MUSIC



DISTINGUISHED MUSIC THERAPY FACULTY :

Sr. Donna Marie Beck, Ph.D., FAMI, MT-BC

Deborah Benkovitz, LSW, MT-BC

Sr. Charleen Pavlik, Ph.D., LSW, MT-BC

Linda Sanders, MRE, MT-BC

For further information, Please Contact:
Sr. Donna Marie Beck
beck@duq.edu or 412-396-6086
Mary Pappert School of Music/Duquesne University
600 Forbes Avenue, Pittsburgh, PA 15282

SAINT MARY-OF-THE-WOODS COLLEGE
MASTER *of* ARTS
in MUSIC THERAPY

Get Your Master's ...

Keep Your Life

SAINT MARY-OF-THE-WOODS COLLEGE
MASTER OF ARTS IN MUSIC THERAPY PROGRAM

- Distance Education Format
- Spend Limited Time On Campus
- Study With Experts In The Field
- Develop Skills In Improvisation, GIM, and Counseling
- Finish In 3 Years (minimum)

"I love the Music Therapy Program at Saint Mary-of-the-Woods College because it allows me to continue my music therapy practice, apply my music therapy experience to my classwork, and seek answers to my clinical questions through the reading, classwork, and interactions with the professors."

-Annette Pleau, M.A., MT-BC, Somerville, Mass.

SAINT MARY-OF-THE-WOODS COLLEGE
mamt@smwc.edu • 812-535-5154 • www.smwc.edu

GUIDED IMAGERY AND MUSIC: LEVEL I TRAINING PROGRAM

Mid-Atlantic Training Institute

January 30-February 3, 2004
Seven Oaks, Madison, Virginia

Training conducted by Sierra Stokes-Stearns,
Ph.D., and Erin Johnson, LPC, LMFT.

Class size limited to 12, for this experiential training set in a beautiful rural retreat center 20 miles north of Charlottesville, Virginia, and a two hours drive southwest of Washington, DC.

To register contact Erin Johnson, at (434) 971-4747, x 105 or Sanibel59@hotmail.com, or sjstearns@comcast.net

Additional training opportunities: Rhythms of Transformation: An Introduction to the Bonny Method of Guided Imagery and Music. One day workshops in Charlottesville, Virginia; October 24 and November 22, 2003

Mid-Atlantic is a CBMT provider (P#-039) for continuing music education credits and maintains responsibility for program quality and adherence to CBMT policies and criteria. Also approved provider (#934) for CEU credits for the National Board of Certified Counselors, and adheres to NBCC policies and criteria. Social work CEU's through Virginia Commonwealth University. Graduate credit is available through affiliation with Virginia Commonwealth University.

YOUR MUSIC STORE FOR

- Elementary Classroom Product
- Classroom Games For All Learners
- Adaptive Music Resources For All Ages
- Therapy Song Collections
- Many Texts •Rhythm Instruments

Registered Music Therapist On Staff!

Jan Ackley Malecha

jmalecha@ward-brodt.com

Hundreds of Educational Titles, in stock now!



608/661.8600 800/369.6255 2200 W. BELTLINE HWY. (EXIT TODD DR.) MADISON, WI

OPEN Mon-Fri: 10am to 8pm, Sat: 9am to 5pm, Sun: 11am to 5pm www.ward-brodt.com



Mississippi University For Women

Admitting Men Since 1982

Announcing

The new Bachelor of Music in

Music Therapy

Program

Kristen M. Chase, MM, MT-BC

Director of Music Therapy

www.muw.edu/Fine_Arts/MusicTherapy.htm



MONTCLAIR MUSIC THERAPY

- ◆ Over 30 years of excellence in training music therapists
- ◆ Undergraduate, certification and graduate programs
- ◆ Closely supervised clinical work
- ◆ Excellent clinical training opportunities in the tri-state area
- ◆ Music Therapy training groups
- ◆ Presentations, workshops and Web conferencing with internationally recognized guest clinicians

Montclair State University
Department of Music
offers a nurturing
environment for
developing
the skills and
talents of its students.



www.musicmontclair.com

For further information about our faculty, program requirements and audition procedures, visit www.musicmontclair.com or contact us —
Tel: 973-655-5212; Email: Prof. Karen Goodman (goodmank@mail.montclair.edu) or Prof. Joke Bradt (bradtj@mail.montclair.edu)

Montclair State University • Department of Music • Upper Montclair • New Jersey 07043

No, we're not hiding from you!

PRELUDE MUSIC THERAPY

is not in the exhibit hall this year.

**WE'RE TAKING A YEAR OFF SO WE CAN
ATTEND SESSIONS AND MEETINGS!**

Our songbooks and some of our other products may be
available at West Music and MMB Music - and you can always
visit us (and our brand-new blogs!) on the web at
PreludeMusicTherapy.com

SEE YOU IN 2004 IN AUSTIN!

BEYSEV & BOYBLEEN

Ohio University

School of Music - Dr. Meryl Mantione, Director



- Professional training in undergraduate and graduate study leading to the Bachelor of Music and Master of Music degrees.
- Faculty of professional musicians dedicated to the highest standards of teaching, performance, and scholarship.
- Housed in the School of Music's superb six-story building, featuring 81 practice rooms, an excellent library, computer lab, recital hall, and recording and electronic music studios.

We are pleased to announce the appointment of -



OHIO
UNIVERSITY

Louise Steele, MMed, MT-BC
Director of Music Therapy
Associate Professor of Music

and

Kamile O'Donnell, MA, MT-BC
Assistant Professor
of Music Therapy

For information, contact:

Director, School of Music
Music Building
Ohio University
Athens, OH 45701-2979
Phone 740-593-4244
Fax 740-593-1429
www.ohio.edu/music

Ohio University is an accredited institutional member of the National Association of Schools of Music.
Ohio University is an affirmative action institution.



Southwestern Region American Music Therapy Association

New Mexico - Oklahoma-Texas

6 AMTA Approved Schools

Sam Houston State University---Huntsville, TX
Southern Methodist University-Dallas, TX
Texas Woman's University--Denton, TX
University of the Incarnate Word--San Antonio, TX
West Texas A&M University--Canyon, TX
Southwest OK State University--Weatherford, OK

10 National Roster Internship Sites

Center for Music Therapy, Inc-Austin	Shriners Burn Hospital-Galveston
Central TX VA Health Care System-Waco	Terrell State Hospital-Terrell
Denton Independent Schl District -Denton	The Inst. for Rehab & Research-Houston
Denton State School--Denton	The Rise School-Houston
San Antonio State Hospital-San Antonio	UT Harrison County Psych. Ctr.-Houston

website: www.swamta.org



MUSICIANS' WELLNESS, INC.
CERTIFICATE TRAINING IN PERFORMANCE WELLNESS

The incidence of performance-related disorders in musicians is reaching epidemic proportions in our society today.

PROFESSIONAL TRAINING PROGRAM

This clinically-proven method of preventing and treating musicians' disorders (overuse injuries, stage fright, etc.) utilizes cutting edge music therapy stress reduction and wellness techniques developed specifically for treating normal adults. Maximize your potential as a music therapist while at the same time overcoming your own performance-related issues. Become a Performance Wellness trainer in your area. **16 CEU's.**

Train with Music-Medicine Specialist: Dr. Louise Montello, NCPsyA, MT-BC

Level I	October 3-5, 2003	New York City
Level I	November 22-23	Minneapolis
Level I	December 6-7	Los Angeles
Level I	February 6-8, 2004	New York City
Level I	April 17-18	Boston
Level I	May 14-16	New York City
Level II	January 8-12, 2004	Upstate New York
Level II	May 21-25	Upstate New York

Tuition: Level I \$250; Level II \$500

Information: Call 212-529-9737 or visit www.musicianswellness.org

MUSIC THERAPY AT

THE UNIVERSITY OF IOWA
SCHOOL OF MUSIC

BACHELOR OF MUSIC IN MUSIC THERAPY

MASTER OF ARTS IN MUSIC THERAPY

Teaching and Research Assistantships Available for 2004-2005

- Comprehensive School of Music
- Diverse range of practicum sites
(e.g. UI Hospitals, schools, clinics)
- Individualized attention
- Eclectic philosophy
- Integrates clinical and research aspects of therapy

FOR MORE
 INFORMATION
 CONTACT:

DR. KATE GFELLER
Program Director
kay-gfeller@uiowa.edu

DR. MARY ADAMEK,
*Director of
 Clinical Activities*
mary-adamek@uiowa.edu

or visit our website:
WWW.UIOWA.EDU/~MUSIC



drum
voice
music



ELEPHANT HOTEL.

glen velez
lori cotler

To order visit:
www.glenvelez.com

or send \$17 check or
money order to:
Glen Velez
P.O. Box 955 NY, NY 10024

Grammy award winning world music percussionist Glen Velez's latest cd, Elephant Hotel, is a new collaboration with scat singer/composer Lori Cotler, who also is a Music Therapist and teaches Music Therapy at the New School in New York City.

Glen's track record as a seminal creator of music from a drumming perspective, along with Lori's consummate skills in jazz scat singing, weaves an evocative spell of ecstatic rhythmic interplay.



Thera-pie.com was started to offer therapists a place to find activity sets that can be used in their sessions to more cheerfully accomplish the goals of their clients. The primary focus at this time is toward children's needs whether in a private or group setting.

WELCOME
TO **THERA-PIE.COM**

SEE OUR SELECTION OF:
Melissa & Doug, Folkmanis, Mary Meyer and more.

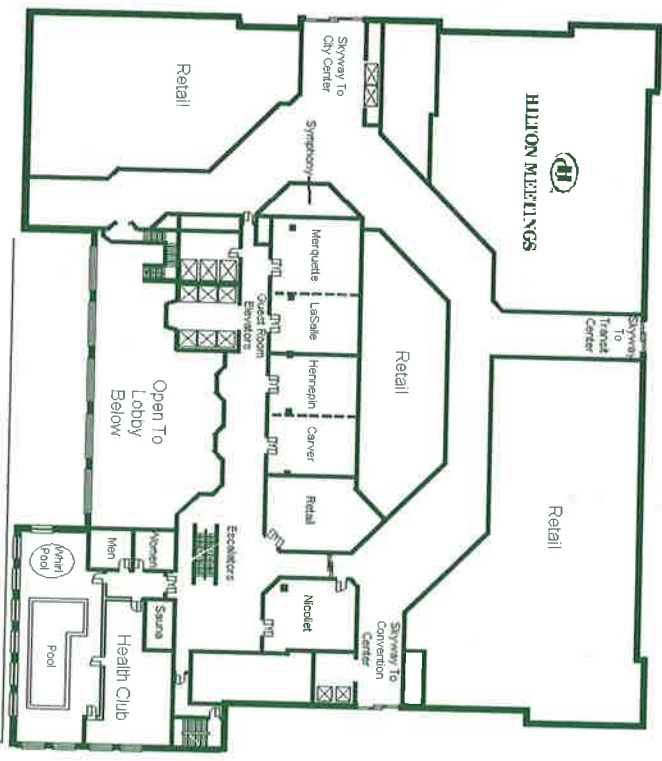
PLEASE VISIT OUR WEBSITE
WWW.THERA-PIE.COM

Notes

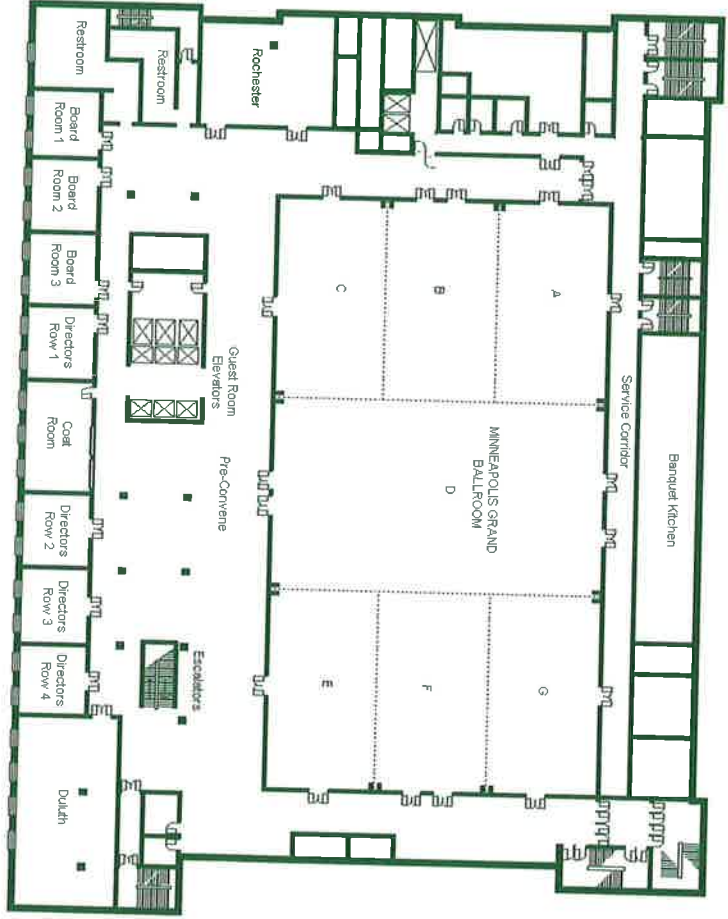
Notes

Hotel Maps

MEETING FACILITIES - SECOND FLOOR



MEETING FACILITIES - THIRD FLOOR



2004 AMTA Conference

Moving Forward with Music Therapy

Sessions — November 19-21 2004
Meetings — November 16-21 2004
Institutes — November 17 2004
CMTEs — November 18-21 2004

Austin, Texas

Call for Papers Deadline: March 15, 2004

Check the AMTA website and your newsletters for details as they become available.