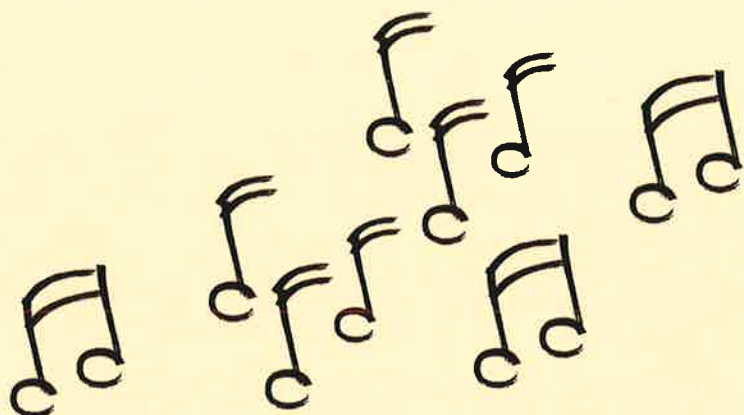


2001:



A MUSIC THERAPY

Odyssey



**2001 AMTA
Conference**

October 24 – 28,
2001

Pasadena,
California

Conference-at-a-Glance

7:00 am 9:00 11:00 1:00 3:00 5:00 7:00 9:00
 8:00 10:00 12:00 pm 2:00 4:00 6:00 8:00 10:00

Day	7:00 am - 8:00	8:00 - 9:00	9:00 - 10:00	10:00 - 11:00	11:00 - 12:00 pm	12:00 pm - 1:00	1:00 - 2:00	2:00 - 3:00	3:00 - 4:00	4:00 - 5:00	5:00 - 6:00	6:00 - 7:00	7:00 - 8:00	8:00 - 9:00	9:00 - 10:00
Monday October 22			Guided Imagery and Music: Level 1 Training												
Tuesday October 23			Guided Imagery and Music: Level 1 Training												
Wednesday October 24		Pre-Conference Institutes							Pre-Conference Institutes						
		Guided Imagery and Music: Level 1 Training													
Thursday October 25		CMTE Courses					CMTE Courses				Exhibits Open		Opening Session/Reception		
		Guided Imagery and Music: Level 1 Training													
		Concurrent Sessions					Concurrent Sessions				Business Mtg.		Drum Circle		
Friday October 26		Concurrent Sessions					Concurrent Sessions				Business Mtg.		Drum Circle		
Saturday October 27		Concurrent Sessions					Concurrent Sessions				Business Mtg.		Exhibits Close		Cabaret
Sunday October 28		Concurrent Sessions				Closing Session			CMTE Courses						

2001: A MUSIC THERAPY Odyssey



3RD ANNUAL AMTA CONFERENCE

Pasadena, California

October 24 – 28, 2001

This conference is dedicated to the many workers and volunteers who both risked, and lost, their lives in the tragic events of September 11, 2001. It is this concern for the well-being of others that is the very basis of our profession.

Our thoughts and prayers are with the families and loved ones of all those who were lost that day, as we renew our efforts to make a difference in the world through the healing power of music.

TABLE OF CONTENTS

WELCOME FROM

President of the United States	3
First Lady of the United States	4
Mayor of Pasadena	5
President and CEO of The Recording Academy	6
Conference Chair	7
AMTA President	8
Local Committee Chair	8

GENERAL INFORMATION	9
---------------------------	---

OPENING SESSION HIGHLIGHTS	11
----------------------------------	----

LIFETIME ACHIEVEMENT AWARDS	12
-----------------------------------	----

SPECIAL EVENTS	13
----------------------	----

INSTITUTES

Neurologic Music Therapy	18
Innovative Strategies, Activities and Techniques	19
Music Therapy as a Related Service	20
Music Psychotherapy for Adults & Children	21

CMTEs

Continuing Music Therapy Education Information	22
CMTE Course Schedule	23

MEETING SCHEDULE	27
------------------------	----

SESSION SCHEDULE	29
------------------------	----

CONFERENCE OFFICIALS	51
----------------------------	----

EXHIBIT HALL	52
--------------------	----

CONFERENCE EXHIBITORS	53
-----------------------------	----

ACKNOWLEDGEMENTS	58
------------------------	----

CONFERENCE SPONSORS	59
---------------------------	----

ADVERTISEMENTS	61
----------------------	----

*Greetings from
the President of the United States*

THE WHITE HOUSE
WASHINGTON
August 31, 2001

I am pleased to send warm greetings to the American Music Therapy Association as you host your Third Annual Conference and explore the theme, "2001: A Music Therapy Odyssey."

As one of humanity's most ancient and enduring art forms, music inspires and entertains us. At times music helps us convey most effectively our emotions and ideas. Music improves our quality of life. I commend the music therapists attending this conference for your dedication to your field and for your creativity in using the power of music to help individuals with disabilities or illnesses. Your efforts enhance their quality of life and contribute to the development of your profession.

Best wishes for an informative and successful conference.



C
O
N
F
E
R
E
N
C
E

W
E
L
C
O
M
E
S

*Greetings from
the First Lady of the United States*

THE WHITE HOUSE

Greetings to all of you who are gathered here in Pasadena for the American Music Therapy Association's Third Annual Conference!

I am delighted to applaud your efforts to spread the good word about the benefits of music therapy and the need to increase access to quality music therapy services. We all know that music lifts the spirits, increases cognitive function and strengthens connections between people. The education and training provided by your organization help people throughout the United States to have fuller and more enjoyable lives.

One of the great beauties of our nation is the can-do attitude of selflessness which sees a need and creates an innovative response. Music therapy in its many forms is just such a response.

Thank you for your good works on behalf of your neighbors who have extraordinary needs. May your meetings be inspiring, and may you return to your communities with renewed energy and enthusiasm!

With best regards,



Greetings from the Mayor of Pasadena

OFFICE OF THE MAYOR

October 25, 2001

Dear Members and Friends of the American Music Therapy Association:

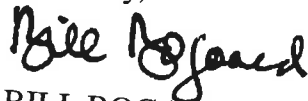
I am delighted to welcome you to the City of Pasadena for the Third Annual American Music Therapy Association conference. It is a source of pride that the Association, whose contributions to the advancement of education, professional standards and research in support of the music therapy profession are significant, is meeting here.

Like the great cities of Europe, Pasadena is a patchwork of wonderful districts, each with its own distinct characteristics, and many within walking distance. During your stay, you will discover a City of unparalleled beauty with an international flair. Our City's diverse ethnic makeup makes it a southern California treasure. We offer an extraordinary array of culture, world-class museums, theater, and excellent restaurants.

During your visit, you will find yourself strolling along the streets of one or all of our acclaimed shopping and dining districts — Old Pasadena, the Playhouse District and South Lake Avenue. Our newest landmark district, Paseo Colorado, an exciting open-air urban village, is located directly across from the Civic Auditorium.

You have my best wishes for a rewarding and enjoyable conference. I hope you enjoy Pasadena, and will come back again soon for business and for pleasure.

Sincerely,



BILL BOGAARD
Mayor

C
O
N
F
E
R
E
N
C
E

W
E
L
C
O
M
E
S

*Welcome from Michael Greene and
The Recording Academy*

W elcome to beautiful Pasadena, California, and the 2001 Annual Conference of the American Music Therapy Association. As National Corporate Spokesperson for the American Music Therapy Association, I have the opportunity to speak with many groups and individuals about the power of music and the work of music therapists. People throughout our industry know that music has the capacity to lift our spirits, raise our consciousness and deepen our understanding of one another. Because of your work, they also know that music therapy is changing the lives of thousands of children, adults and families throughout the country, as well as enlightening and expanding the horizons of the music industry around the world.

The Recording Academy is proud to be part of your efforts to strengthen the position of music therapy in health care. In partnership with AMTA, the MusiCares Foundation has provided funding for research in the role music therapy plays in the process of wellness in young children hospitalized for cancer treatment. The Recording Academy and MusiCares continues to support the mission of AMTA through public awareness efforts such as the Songs From The Heart Presidential Award, which will be presented to Maureen McGovern.

On behalf of The Recording Academy, MusiCares, and the Grammy Foundation, thank you for your service, commitment, and promotion of the power and impact of music in our lives. We are dedicated to helping you achieve your mission of increased public awareness of the benefits of music therapy and increased access to quality music therapy services for all. Have a wonderful conference!



Welcome from Conference Chair

Michele Forinash, DA, LMHC, AMTA Vice President

Welcome to beautiful Pasadena and to "2001: A Music Therapy Odyssey." It is a great pleasure to present the final Program for this Conference. An odyssey is defined as an extended journey and we have chosen this theme as a way of examining both our personal journeys in becoming music therapists and our joint journey as music therapists in a developing field. So join the music therapy community to honor both these individual and collective journeys.

The journey begins on Monday as we offer Level One Training in the Bonny Method of Guided Imagery and Music. Beginning Wednesday, journey to one of the four, 7-hour Institutes addressing cutting edge topics presented by outstanding speakers. **Brian Wilson** and **Alice-Ann Darrow** will chair an institute on *Music Therapy as a Related Service: How to Get Into the Public Schools*; **Paul Nolan** will chair *Music Psychotherapy for Adults and Children: Neuroscience and Music Therapy Perspectives*; **Michael Thaut**, **Alicia Clair**, and **Corene Thaut** will chair *Neurologic Music Therapy: Neuroscientific Model and Evidence-Based Clinical Practice*; and **Cathy Knoll** will chair an institute titled *Innovative Music Therapy Strategies, Activities, and Techniques*.

With over 20 CMTE offerings this year, your journey can help you build skills, learn about new applications of music therapy, or deepen your knowledge in a specialty area. We have chosen CMTEs that cover a wide range of topics and are designed to meet the needs of our students and new professionals as well as seasoned professionals. Several of these sessions are devoted to expanding applied music skills, giving many of us who don't have time for ongoing lessons the opportunity to learn new techniques, build on existing techniques on a variety of instruments, or learn new and innovative approaches to active music making. It is not too late to register for some of these workshops so be sure to do so at the registration desk. We also have over 100 concurrent sessions programmed this year, which we are sure will make your journey here a memorable one.

As you can see in the program we have several spectacular special events planned. It is a thrill to have **Martha Curtis** for our opening on Thursday night for what will be a wonderful evening of music and discussion. And don't forget the Cabaret on Saturday evening to see our colleagues in performance!

So welcome to Pasadena and what promises to be a wonderful Conference. Please be sure to welcome our international guests and invite them to take part in the community. I hope that your journey at this Conference includes fun, stimulation, networking, playing music, and enjoying sunny Pasadena.

Have a wonderful Conference!



C
O
N
F
E
R
E
N
C
E

W
E
L
C
O
M
E
S

Welcome from AMTA President

Mary Adamek, PhD, MT-BC

On behalf of the AMTA Executive Board, I would like to welcome you to the Third Annual AMTA Conference, 2001: A Music Therapy Odyssey. Congratulations on your decision to attend this exciting and stimulating conference! You will have many opportunities to re-energize and grow as a professional by attending the many, varied conference sessions offered this year. The program is by far the most comprehensive and diverse ever, making this the music therapy event of the year!

Be sure to save time for socializing and networking with friends old and new. You are sure to make long lasting connections with other professionals and students that will provide years of support and friendship. I have made many good friends from all over the world at music therapy conferences over the past 20+ years of my music therapy career. I value these friendships, and I look forward to meeting new friends this year in Pasadena.

Learn new information, stimulate your thinking, make connections, and have fun. These are all key elements of a great conference experience!



Welcome From the Local Committee

Ron Borczon, MM, MT-BC, Local Conference Committee Chair



Welcome to the Annual Conference in Pasadena! The local committee has been working hard to ensure that all aspects of the conference run smoothly and that your time in sunny California will be enjoyable and educational. While you are here try to visit some of the local restaurants that boast wonderful cuisine. The area is also rich in art museums and local history, so try to get out and enjoy the local flavor of Pasadena and Old Town Pasadena. You won't be disappointed.

Finally, I hope all of you leave this conference with more knowledge, more skills, and at least the names of two new friends. We have found that from many years of attending conferences, it is always good to see old friends, but to establish new connections and contacts is as enjoyable. Have a wonderful time here in Pasadena!

General Information

Registration

Conference Registration will be located in the lower level of the Conference Building, near Room C101.

Tuesday, October 23

7:00 pm - 9:00 pm (entrance lobby)

Wednesday, October 24

7:00 am - 11:30 am

1:00 pm - 5:00 pm

Thursday, October 25

7:00 am - 11:30 am

1:00 pm - 5:00 pm

Friday, October 26

7:00 am - 11:30 am

1:00 pm - 5:00 pm

Saturday, October 27

7:00 am - 11:30 am

1:00 pm - 5:00 pm

Sunday, October 28

7:00 am - 2:00 pm

Cash Food Sales

For a quick and easy way to eat, cash food will be available in the Conference Center. (please note location and times are subject to change):

Thursday, October 25

12:00 - 2:00 pm

Friday, October 26

6:30 - 8:30 am

12:00 - 2:00 pm

Saturday, October 27

6:30 - 8:30 am

12:00 - 2:00 pm

Sunday, October 28

6:30 - 8:30 am

12:00 - 2:00 pm

Smoking Policy

Smoking is not allowed in the sessions, meeting rooms, or the Exhibit Hall.

Exhibits

The exhibits will be located in the Exhibit Hall. Be sure to catch the "Exhibit Spectaculars," unopposed exhibit times scheduled for Friday and Saturday, and the Exhibit Hall Grand Opening at 9:30 pm on Thursday, October 25.

Thursday, October 25

2:30 pm - 5:00 pm

9:30 pm - 11:00 pm

Friday, October 26

9:30 am - 1:30 pm

(Exhibit Spectacular 11:45 - 1:30)

3:30 pm - 5:00 pm

Saturday, October 27

9:00 am - 4:00 pm

(Exhibit Spectacular 12:15 - 1:30)



"Ask Me"

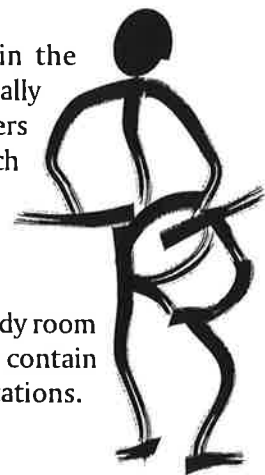
Questions about Pasadena - such as directions to nearby attractions and restaurant information - should be directed to the members of the local committee who will be wearing "Ask Me" ribbons. They would be happy to assist you.

Seating

There is adequate space at the conference for each conference attendee to attend a session at each session time block. However, seating is limited in individual rooms. Please arrive early for sessions you wish to attend to guarantee a seat. Late arrivals disturb the sessions already in progress. Please be courteous if it becomes necessary to enter a session that is underway. We cannot assure participation in individual sessions so plan to arrive early.

What to Wear

We can guarantee that the temperature in the conference rooms will fluctuate dramatically from hot to cold. We suggest that you dress in layers so that you can adjust your apparel based on each meeting room's temperature.



Speaker Ready Room

For the convenience of presenters, a speaker ready room will be located in Room C101. The room will contain audio/visual equipment to help organize presentations.



Press Room

During conference hours, all media representatives are asked to check in at the registration desk located on the lower level of the Conference Building.

Business Needs

Your hotel should have a business center for your photocopying needs. You are responsible for all costs incurred. Local copy centers are also available in the area. Please contact the front desk at your hotel for more information. Other office equipment, such as computers, will not be available on site. Please prepare your session handouts ahead of time and plan for extra handouts as presenters often run out.

Continuing Music Therapy Education

Continuing Music Therapy Education (CMTE) course information will be available at the Registration Booths during registration hours. Please direct questions about board certification and MT-BC renewal requirements to the CBMT booth, located in the Exhibit Hall (Booths 209 & 211).



Services for Persons with Disabilities

AMTA is committed to insuring participation for all conference attendees with disabilities. Every attempt has been made for full compliance with the Americans with Disabilities Act. Questions about hotel accessibility should be directed to the front desk of each hotel. Please contact someone at the conference registration desk if you need further assistance.

Persons with mobility impairments will be able to move from floor-to-floor in the Conference Center by using the elevator located on the south wall of the building, just adjacent to the parking garage on both levels. To enter from the street, there is a ramp, which is located on Green Street between the Civic Auditorium and the Conference Center. This ramp leads to a side entrance of the Conference Center on the 2nd floor.

Disabled access to the Exhibit Hall is either through the lower level of the parking structure closest to the Marengo Street side at the very north end. The entrance at that location does not have any stairs. Attendees can also enter the exhibit hall from the conference building through the concourse between the buildings.

A Word About Kids...

Conference sessions and evening events are designed for professional audiences. Children under 10 years old may not find these events and activities interesting. Children under the age of 5 will not be allowed into events. Please be courteous to other conference attendees and plan accordingly.

Childcare

Information on local childcare options can be obtained from the Concierge Desks in your individual hotel. Conference organizers have not reviewed these childcare facilities and therefore cannot warrant their quality. You are responsible for payment for these services.



Your music therapy conference odyssey begins....

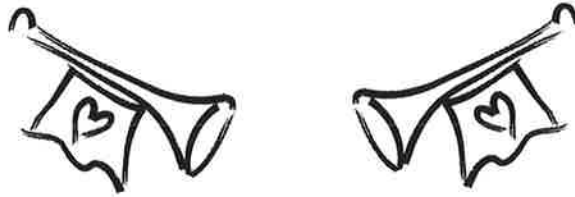
Thursday, October 25, 2001

OPENING SESSION

7:30 pm

CONVENTION CENTER EXHIBIT HALL THEATRE
(located in the Exhibit Hall)

sponsored by Remo, Inc. and Yamaha
Corporation of America



Gathering the Community with Drums and Fanfare

Christine Stevens and Arthur Hull
The Rose Bowl Fanfare Trumpeters

Keynote Address

Martha Curtis, with Richard Duncan

Using both words and music, violinist Martha Curtis inspires audiences across the country and the world. Her life of passion and determination has been told by CBS' "60 Minutes" and NBC's "Today Show." She battled epilepsy both on and off stage for many years until a team of doctors at The Cleveland Clinic removed sections of her right brain to stop the neurological storms. Ms. Curtis' presentation combines performance of major repertoire, the workings of the brain, and her inspiring neurological triumph. Because she knows her own medical case well and can perform in both music and words, she brings to the stage unique insight from the inner world of the human being. AMTA is proud to present the amazing journey of Martha Curtis, accompanied by pianist Richard Duncan, during the Opening Session of the 2001 Annual Conference.



GRAND OPENING RECEPTION

9:00 pm – 10:30 pm

EXHIBIT HALL

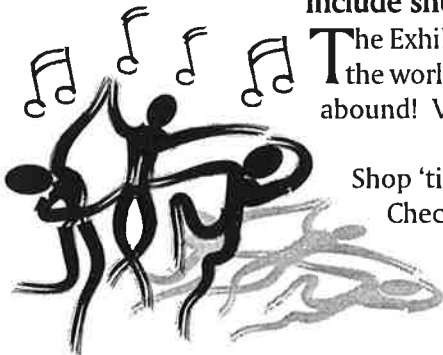
Featuring the 2001 Exhibit Hall and the Spectacular Silent Auction,
with musical guests Cal State Northridge "A" Band Combo



Include shopping on your odyssey list!

The Exhibit Hall features instruments, tools, materials, books, and gifts from around the world for discriminating music therapists. Unique items and conference specials abound! Visit *Club AMTA* for the latest music therapy information and materials.

Shop 'til you drop at *The Spectacular Silent Auction* – and support music therapy! Check out items from our exhibitors, members, and other friends and supporters of music therapy. All proceeds from the Silent Auction benefit the growth and practice of music therapy throughout the United States, including community outreach, technical assistance, and public education.



Lifetime Achievement Awardees



JANE E. HUGHES, MA, MT-BC

Jane Hughes is a unique clinician who can design and maintain an outstanding music therapy clinical program and internship training program while being active in service to her profession and contributing to the literature in the field. Her music therapy program in Leon County, Florida has thrived for more than two decades and her internship program is considered one of the finest in the nation. She is active in AMTA and MENC and contributes greatly as a liaison for the common interests of music therapists and music educators who work with school populations.

Jane began her own music career at Georgia College and received her music therapy training at Florida State University, and her Masters degree at Columbia University in New York City. She has taught in public and private schools as well as university settings throughout the country. Jane's numerous contributions to the literature of the music therapy profession during her career, have focused on music curricula for mainstreaming children. Her most recent efforts have included an outstanding chapter in the AMTA monograph: *Models of Music Therapy Interventions in the School Settings: From Institution to Inclusion* and a research study assessing a music curriculum to teach pre-reading skills in Early Intervention programs. In addition, Jane has made numerous presentations at conferences on every level including local, state, regional, national and international.

Jane combines clinical, research, and scholarship pursuits in her own career and actively promotes the same in her clinical trainees. The creative and scholarly research studies of her interns have been shared professionally at conferences and other venues. Jane's experience and valued expertise resulted in her election to the Commission on Education and Clinical Training. She has been honored by her regional colleagues with both Research and Professional Practice awards. Few people have done more to promote research, scholarship, and contribute to the literature of music therapy, music education and early childhood education than Jane Hughes. She continues to be an active participant in the field and an excellent role model of achievement.



FREDERICK (TED) TIMS, PhD, MT-BC

Dr. Ted Tims is currently Professor and Chair of Music Therapy at Michigan State University, East Lansing, Michigan, one of the oldest music therapy degree programs in the world. He is also Associate Director for Graduate Studies for the School of Music at Michigan State and serves as a Faculty Liaison to the Board of Trustees for the University. Ted earned his PhD from the University of Kansas in 1977. He also holds a master's degree in piano performance from the University of Iowa, and his BM in Music Therapy from Michigan State University. He has had a long-standing private practice in music psychotherapy and in music psychoneuroimmunology.

Ted entered the field of music therapy after a career of teaching piano on the university level and performing as an artist in residence. He first taught Music Therapy at the University of Kansas, where he set-up and coordinated the first UAF Music Therapy Clinic. He initiated the Music Therapy degree program at Colorado State University, where he served as Coordinator of Music Therapy from 1974 to 1984. From 1984 to 1996 he was Professor and Director of Music Therapy at the University of Miami.

Over the years Ted has amassed a great amount of service to the profession of Music Therapy. He served as President and Vice President of the Midwestern Region of the former NAMT, served as Vice President, President, and Past President of NAMT from 1978 to 1984, during which time he served as Program Chair for three National Conferences: in Atlanta, Dallas, and Minneapolis. Ted served on the Executive Board of the Association for a total of 12 years, and the Assembly of Delegates for a total of eight years representing the Southeastern Region. As President of NAMT, Ted appointed the first Certification Board for Music Therapists and later was elected to its Board of Directors.

Ted has been active as a presenter at well over 100 national, international, and regional conferences, and has been invited to speak in Germany, Denmark, Norway, Sweden, Italy, Canada, Ghana, and Japan. He has been the Principal Investigator for numerous research grants, including an Alzheimer's Grant from the Federal Institute on Aging and the recent "Music Making and Wellness Project" funded by industry and the National Association of Music Merchants. Ted is now engaged in brain mapping research with the Department of Radiology at Michigan State University. Ted and his wife, Sue, reside in Okemos, Michigan, where they are active in various community affairs. Sue and Ted have two children, both industrial engineers, one in Florida and one in Texas.

NETWORKING

BREAKFASTS

**Friday, October 26 and
Saturday, October 27**

7:00 am - 8:00 am
CONFERENCE CENTER

Designated tables will be available for specific population and interest areas. Come network with your colleagues to exchange ideas and create solutions to music therapy practice challenges. Take advantage of this opportunity to make new friends while sharing your professional concerns and questions. Feel free to buy your breakfast and head to the area where tables will be provided for networking.

Developmentally Disabled
Disaster Relief
Early Childhood
Forensics/Corrections
Geriatrics
General Medical
International Relations
Mental Health
Music Therapy Education
Rehabilitation (Neuro)
Self Employment
Special Education
Substance Abuse



STATE OF THE ASSOCIATION ADDRESS

Friday, October 26, 2001

5:00 pm – 6:30 pm
EXHIBIT HALL THEATER

AMTA BUSINESS MEETING

Mary S. Adamek, PhD, MT-BC, President

Since 1998, the American Music Therapy Association has seen tremendous growth and development – progress based on the strong foundation emerging from the rich legacies created by our predecessors.

As music therapy enters its sixth decade, it is important for AMTA members to understand the opportunities and challenges facing the Association and the profession. Please join AMTA President Mary S. Adamek as she presents a summary of association goals and accomplishments, as well as a vision for the future of music therapy in the State of the Association Address. The AMTA Awards Ceremony will follow the State of the Association Address.



ENTERTAINMENT BREAKS

Spend your lunch hour listening to these terrific local groups. Grab something to eat at the Cash Food Sales and then come on by. Located outside in the Mishima Plaza Ampitheater.

Friday, October 26

11:45 am - 12:30 pm
Hi-Tops Dance Group

12:45 - 1:40 pm
Cyntia Smith Dulcimer
Ensemble

Saturday, October 27

12:15 - 12:45 pm
Stefana & Big Brutha

1:00 - 1:30 pm
The Optimists Music Ensemble



JAM ROOMS

The following rooms and times have been reserved for open jam sessions. Bring your talent and enjoy! Some instruments will be provided.

Thursday, October 25

10:00 pm - 2:00 am
SHERATON HOTEL - COLORADO
ROOM

Friday, October 26

10:00 pm - 2:00 am
SHERATON HOTEL - COLORADO
ROOM

ARTHUR FLAGLER FULTZ RESEARCH FUND DISTINGUISHED LECTURE

Friday, October 26

8:00 am – 9:30 am

C107

“The Effects of Music and Music Combined with Mother’s Voice on Physiological Measures for Critically Ill Children” — *Janice W. Stouffer, MT-BC, Milton S. Hershey Medical Center, Hershey, Pennsylvania, Recipient of the 1999 Arthur Flagler Fultz Research Fund Award*

The first Fultz Research Fund Award was presented in 1999 to Janice W. Stouffer, MT-BC, of The Milton S. Hershey Medical Center in Hershey, Pennsylvania. AMTA is proud to present Ms. Stouffer and her team to discuss the results of their research on the effects of music and music combined with mother’s voice on physiological measures for critically ill children.

In 1998, Tom and Lucy Ott, through their family foundation *David’s Fund*, established a perpetual fund at the American Music Therapy Association to support research in music therapy. It was the Otts’ wish to have this fund named not after their son David, but after an individual important to music therapy. Because of his seminal contributions to the formation of music therapy and music therapy research, the American Music Therapy Association was pleased to name this new research initiative in honor of Arthur Flagler Fultz.

The purpose of the Arthur Flagler Fultz Research Fund is to encourage, promote, and fund music therapy research and to explore new and innovative music therapy treatments. The Fund seeks to support research in the field of music therapy in clinical research, and health services research.

The 2002 Guidelines and Application for the Arthur Flagler Fultz Research Fund are available at the AMTA Booth in the Exhibit Hall, from the AMTA National Office, and online at www.musictherapy.org. The deadline for applications for the 2002 Fultz Research Fund Award is Friday, May 3, 2002, 5:00 pm Eastern time. Contact Tamara W. Zavislan, AMTA Director of Development for more information.



MUSIC INDUSTRY FORUM 2001

Saturday, October 27

10:45 am – 12:15 pm

C214

MEL WISNIEWSKI, LOWREY ORGAN COMPANY
JULIE ROMEO, BROOK MAYS MUSIC COMPANY
KIRSTEN NELSON, MT-BC, WEST MUSIC COMPANY

GRETA GILLMEISTER, MT-BC, CENTRAL MUSIC COMPANY
STEVE WEST, CHAIRMAN, NAMM
FACILITATOR – TAMARA W. ZAVISLAN, MGMT, MT-BC

As we move into the next 50 years of music therapy, new partnerships and alliances are abounding in business and non-profit communities alike. Alliances between music therapy and the music products industry are mutually beneficial, resulting in increased music therapy programs and services and new job possibilities, new markets for music products, and increased awareness and validation of the positive contributions of music. Music industry leaders and music therapists are developing strategic partnerships and alliances, and exploring new employment opportunities in music therapy. In this rapidly changing world, music therapists are finding new opportunities to utilize their skills and talents. Music industry retailers and manufacturers recognize the added value of music therapists on staff as consultants, instructors, specialists, and directors. The retail setting offers a dynamic employment opportunity for music therapists.

Meet the industry leaders and music therapists that have created positive career opportunities in this non-traditional setting. Learn about the business and therapeutic skills, knowledge, and expectations needed to succeed, and how to get started. Bring your questions, ideas, and issues to this thought-provoking, interactive forum. Ample time will be given for discussion with the audience and panel.

PUBLIC RELATIONS SESSION

Saturday, October 27

9:00 am – 10:30 am

C211

The Public Relations Session, featuring Clinical Training Sites, is an informal session sponsored by the Employment and Public Relations Committee. This event offers the opportunity for students to explore internship site displays and professional members to view public relations materials presented by colleagues. You are cordially invited to stop by at any time during the session to meet with the presenters.

FINGER LAKES DEVELOPMENTAL DISABILITIES
SERVICE OFFICE - TYMESON CENTER
Newark, NY; *Donna W. Polen, MT-BC*

BETHANY LUTHERAN VILLAGE
Dayton, OH; *Larisa McHugh, MT-BC*

VOICES: A WORLD FORUM FOR MUSIC THERAPY
Simon Fraser University, Burnaby, BC,
Canada, *Carolyn Kenny, PhD, RMT/
CMT; Barbara Wheeler, PhD, MT-BC*

MUSIC THERAPY AND KINDERMUSIK: A SHARED
PHILOSOPHY
Greensboro, NC; *Robin Gentile, RMT*

PORTERVILLE DEVELOPMENTAL CENTER
Porterville, CA; *Janice Gibson, MT-BC*

METROPOLITAN STATE HOSPITAL
Norwalk, CA; *Rebecca McClary, MT-BC*

UNIVERSITY HOSPITALS HEALTH SYSTEM -
HEATHER HILL HOSPITAL AND HEALTH
PARTNERSHIP
Chardon, OH; *Natalie McClune, MT-BC*

BANNER HEALTH SYSTEM
Phoenix, AZ; *Tracy Leonard-Warner,
MT-BC*

PARK NICOLLET HEALTH CENTER METHODIST
HOSPITAL
Minneapolis, MN; *Dawn M. Miller,
MME, MT-BC*

TENNESSEE TECHNOLOGICAL UNIVERSITY
Cookeville, TN; *Michael Clark, MME,
MT-BC; Jennifer Jones, MM, MT-BC*

HEARTSHARE FIRST STEP PRESCHOOL
Richmond Hill, NY; *Kathryn Stevenson,
MA, MT-BC*

INTERNATIONAL STUDENTS, PROFESSIONALS, & GUESTS!

Saturday, October 27

7:00 am – 8:00 am

C103

The International Relations Committee of AMTA would like to help to make your experience in the U.S. and at this conference as comfortable and enriching as possible. We are also interested in learning about what you are thinking, and discovering ways that we can help to foster positive experiences for people from other countries.

We encourage you to purchase your own food and then meet us for breakfast. Members of the International Relations Committee will be there to facilitate discussion about your experience in this country and how we can help AMTA to better assist you in whatever ways you feel are necessary.

We look forward to meeting all who are interested in international music therapy issues at this breakfast.



CABARET

Saturday, October 27

9:00 pm

C106



Come join our guest host John DiAquino, currently starring in *That's My Bush* on Comedy Central, as we celebrate our musical talents in an evening Cabaret! John, who has also been a guest star on *Seinfeld*, *Quantum Leap*, *Third Rock from the Sun*, and *VIP* to name just a few, has been a long time supporter of Music Therapy from his undergraduate days at Florida State University. He will join Co-Host Ron Borczon in some fun music making. So sign up early and come prepared to laugh, sing, and to be entertained by your fellow students, colleagues, and maybe by some of your teachers!

RESEARCH POSTER SESSION

Saturday, October 27

10:45 am - 12:30 pm

C211

The Research Poster Session showcases current music therapy research from around the world. Each presenter will have an exhibition area, and attendees are free to wander about sampling studies of choice with the opportunity for informally meeting the authors and discussing their research with them. Graphs, figures, and tables will be displayed, with handouts available.

MUSIC THERAPY WITH ALZHEIMER'S PATIENTS: CREATING THE NEED FOR SERVICES - *Melissa Brotons and Patricia Marti, Universitat Ramon Llull, Center Clinic de Musicoterapia.*

INTEGRATING DISABILITY SIMULATIONS INTO A COURSE FOR STUDENT MUSIC THERAPISTS - *Cynthia M. Colwell, Univ. of Kansas.*

THE EFFECT OF SELECTED PRESENTATION FORMATS ON SIXTH GRADE STUDENTS' DESIRE TO PARTICIPATE IN COMMUNITY SERVICE OPPORTUNITIES - *William Fredrickson, Univ. of Missouri-Kansas City; Alice-Ann Darrow, Univ. of Kansas; and Suzanne Byrnes, Univ. of Missouri-Kansas City.*

CHILDREN WITH DOWN SYNDROME AND MUSIC: A QUALITATIVE, PARENTAL DESCRIPTION OF THEIR EXPERIENCE IN MUSIC - *Alyssa Daudt and Ryoko Ohara, MCP Hahnemann Univ.*

EFFECTS OF KEYBOARD EXERCISES ON THE REHABILITATION OF THE PARETIC HAND OF STROKE PATIENTS - *Heather Fjare and Michael Thaut.*

COMPARISON OF THE EFFECTIVENESS OF THREE MUSIC THERAPY CONDITIONS TO MODULATE BEHAVIOR STATES IN STUDENTS WITH PROFOUND DISABILITIES: A PILOT STUDY - *Claire M. Ghetti, Univ. of Kansas and Housing Works.*

MUSIC LISTENING FOR MAINTAINING ATTENTION OF OLDER ADULTS WITH COGNITIVE IMPAIRMENTS - *Dianne Gregory, Florida State Univ.*

THE EFFECT OF MUSIC "BUTTONS" ON THE POST-NEWS STORY IMAGERY OF MUSIC AND JOURNALISM MAJORS - *Robert Groene, Univ. of Missouri.*

THE EFFECTS OF MUSIC LISTENING OF PREMATURE INFANTS IN THE NEONATAL INTENSIVE CARE UNIT - *Marta Grosmark.*

THE LIFELONG MUSICAL INVOLVEMENT OF AN AUTISTIC INDIVIDUAL - *Kristin Herkstroeter, Florida State Univ.*

TRENDS IN HOSPICE ADMINISTRATOR'S KNOWLEDGE OF MUSIC THERAPY: A COMPARATIVE ANALYSIS OF SURVEYS FROM 1995 AND 2001 - *Russell E. Hilliard, Big Bend Hospice.*

EVALUATION OF MUSIC INFLUENCED BY CONTRAST WITH OTHER MUSIC - *Valerie N. Stratton, Penn State Altoona.*

COMPUTER-BASED MUSIC PERCEPTION ASSESSMENT FOR CHILDREN (CMPAC): A VALIDATION STUDY - *David E. Wolfe, Univ. of the Pacific.*

AN ANALYSIS OF CURRENT INTERNET INFORMATION REGARDING MUSIC THERAPY: AN UPDATE AND EXTENSION - *Christopher M. Johnson, Univ. of Kansas; John M. Geringer, Univ. of Texas; and Erin E. Stewart, Univ. of Kansas.*

AUTHENTIC ADVOCACY: AN EXPLORATORY SURVEY OF MUSIC THERAPY ADVOCACY STRATEGIES AND TACTICS - *Roy E. Joyner, Jr., Fulton Co. School District and Matthew D. Thibeault, Ormondale School.*

MUSIC THERAPY PRACTICE IN THE SOUTHWESTERN REGION OF THE AMERICAN MUSIC THERAPY ASSOCIATION: MAKING A LIVING IN A DYNAMIC, COMPLEX FIELD - *Lee D. Lacy and Nancy A. Hadsell, Texas Woman's Univ.*

THE EFFECTS OF MUSIC ASSISTED RELAXATION ON THE RELAXATION, SLEEP QUALITY, AND DAYTIME SLEEPLESSNESS OF SHELTERED, ABUSED WOMEN - *Amy Lasswell, Florida State Univ.*

THE EFFECT OF MUSIC LISTENING ON THE QUALITY OF WORK OF COMPUTER INFORMATION SYSTEMS DEVELOPERS - *Teresa Lesiuk, Systematic Musicology, Univ. of Western Ontario.*

A MUSICAL ANALOG TO ASSESS STRESS RESPONSES - *Clifford K. Madsen, Florida State Univ.*

PERSONALITY CHARACTERISTICS OF MUSIC THERAPY STUDENTS, INTERNS, AND PROFESSIONALS - *Jessica R. Major, Univ. of Evansville.*

EFFECTS OF AGE AND MUSICAL EXPERIENCES ON RESPONSES TO MATCHING MUSIC TO ART OR POETRY - *Randall S. Moore, Univ. of Oregon.*

PROMOTION AND TENURE STANDARDS AMONG MUSIC THERAPY PROFESSORS - *Audree O'Connell, and Eric G. Waldon, Univ. of the Pacific.*

USING OBJECTIVE SCALES TO EVALUATE THE EFFECTS OF PUBLIC PERFORMANCE ON THE ACQUISITION OF BASIC GUITAR SKILLS APPROPRIATE FOR MUSIC THERAPY - *Rachel Pulver, Florida State Univ.*

EXPLORING THE ROLE OF CONSULTANT AS A MUSIC THERAPIST WHILE EMPOWERING TEACHERS TO USE MUSIC IN THE EARLY CHILDHOOD CLASSROOM - *Dena M. Register, Florida State Univ.*

SONGWRITING AND DIGITAL VIDEO PRODUCTION INTERVENTIONS FOR PEDIATRIC PATIENTS UNDERGOING BONE MARROW TRANSPLANTATION - *Sheri L. Robb, Univ. of Missouri; and Allison G. Ebberts, Children's Mercy Hospital.*

THE EFFECT OF PACIFIER-ACTIVATED MUSIC ON NON-NUTRITIVE SUCKING (NNS) AND SUBSEQUENT FEEDING BEHAVIORS OF PREMATURE INFANTS IN THE NBICU - *Jayne M. Standley, Florida State Univ. ; and Jane Cassidy, Louisiana State Univ.*

THE EFFECT OF RECORDED MUSIC ON THE PSYCHOLOGICAL FUNCTIONING AND TOTAL HOSPITAL STAY OF PREMATURE INFANTS IN THE NEONATAL INTENSIVE CARE UNIT - *Kimberlee Tandy, Univ. of Kansas.*

THE EFFECT OF PREFERRED GENRE MUSIC SELECTION VERSUS PREFERRED SONG MUSIC SELECTION ON ANXIETY LEVELS AS MEASURED BY VISUAL ANALOG SCALE AND STATE-TRAIT ANXIETY INVENTORY - *Darcy DeLoach Walworth.*

MUSIC AND MULTIMODAL STIMULATION IN THE NEONATAL INTENSIVE CARE UNIT: IMPLICATIONS FOR MUSIC THERAPY REFERRAL GUIDELINES BASED ON CORRECTED GESTATIONAL AGE AND WEIGHT, TOLERANCE FOR STIMULATION, WEIGHT GAIN, AND LENGTH OF HOSPITALIZATION - *Jennifer Whipple, Florida State Univ.*

DRUM CIRCLE

Friday, October 26

7:30 pm – 9:00 pm

MISHIMA PLAZA AMPITHEATER

Discover the Journey — Community Drum Circle

Come and experience the drum circle journey, where new relationships, renewed energy, and deep connections are discovered. This year's drum circle will be facilitated by Christine Stevens AND special guests! Check out this fabulous interactive annual event and discover the health & wellness benefits of community drumming for yourself! Drum and percussion instruments provided by Remo, Inc.



CONFERENCE WRAP-UP

Sunday, October 28

12:00 pm – 1:00 pm

EXHIBIT HALL THEATRE

The Channelaire Chorus

Bobbette Gantz, Director



The Channelaire Chorus is a 122-member women's singing group specializing in barbershop harmony. Having served Ventura County, CA for nearly 40 years, Channelaire performs for civic and charitable organizations and community events. Known for excellent vocal production and a dynamic sound, Channelaire has performed in Carnegie Hall, entertained passengers on a New Orleans riverboat, toured throughout the U.K., and appeared at Disneyland and on "Good Morning,

America." As the new 2001 Regional Champions, they will represent the Southern California/Nevada area in the Sweet Adelines International competition, featuring the 33 best choruses from all over the world, in Nashville in November 2002.

Founded in 1947, Sweet Adelines, Inc. is the largest women's singing organization in the world. Nearly 30,000 members participate in over 650 chapters in the U.S., Japan, Australia, Canada, Finland, Sweden, Germany, The Netherlands, New Zealand, and the U.K.

Bobbette Gantz is a multi-time championship chorus director, a certified judge, and a much sought-after quartet and chorus coach. She's a member of the Sweet Adelines International Faculty and teaches throughout the U.S. and the world. In March 2001, Bobbette joined an elite group of Sweet Adeline directors when she became a Master Director as a result of the Channelaire Chorus scoring more than 600 points in the 2001 Regional Competition.



Neurologic Music Therapy: Neuroscientific Model And Evidence-Based Clinical Practice

Wednesday, October 24, 2001

8:00 am – 3:00 pm

Room C107

Sponsored by MMB, Music, Inc.

Co-Chairs: Michael H. Thaut, PhD, RMT
 Alicia A. Clair, PhD, MT-BC
 Corene P. Thaut, MM, MT-BC



6 CMTE CREDITS
 COST: \$110.00

This institute will feature a panel of experts from fields of music therapy and neurology focused on state-of-the-art research and clinical practice in neurologic music therapy. Topics will include the current biomedical research in music that serves as the foundation for neurologic music therapy, and an introduction to the standardized and evidence-based treatment system to sensorimotor, cognitive, and speech/language training for patients with related neurologic disorders. Case studies will illustrate the therapeutic applications, and the scientific and clinical theories, which drive the research and subsequently interface with clinical practice and reimbursement. The content and framework for current and future training, research, and clinical practice will be included. Neurologists, physicians, music therapists, physical therapists, occupational therapists, nurses, social workers, and other health care providers interested in the importance of neurologic music therapy are encouraged to attend.

The institute will provide:

- An overview of current biomedical research in music as the foundation for neurologic music therapy.
- An introduction to the standardized and evidence-based treatment system related to sensorimotor, cognitive, and speech/language training for patients with neurologic disorders.
- A presentation of case studies to illustrate therapy applications.
- An outline of scientific and clinical theory to drive the research, therapy, and reimbursement interface.
- A discussion of a framework for future training, research, and clinical practice.



Scheduled Speakers include:

Michael H. Thaut, PhD, RMT, Colorado State University; Alicia Clair, PhD, MT-BC, University of Kansas; Corene Thaut, MM, MT-BC, Colorado State University; Francesca Mancini, MD, University of Pavia/Italy; Gerald McIntosh, MD, Colorado State University; Marjorie O'Konski, MME, MT-BC, Lexington Park Nursing and Post Acute Care Facility; Suzanne Oliver, MT-BC, Music Therapy Services of Arizona; Amy Culpepper, MT-BC; Jennifer Rathbun, MM, MT-BC, Texas Institute for Rehabilitation and Research

Innovative Music Therapy Strategies, Activities, and Techniques

Wednesday, October 24, 2001

3:30 pm – 10:30 pm

ROOM C104 AND C105

Chair: Cathy Knoll, MT-BC, MusicWorks

6 CMTE CREDITS

COST: \$110.00



Institute Topics:

- ✿ **IT REALLY WORKS!** — State-of-the-art music therapy strategies proven effective in a variety of clinical settings
- ✿ **MUSIC ROCKS!** — Dozens of fresh music activities for people of all ages, abilities, and interests
- ✿ **NITTY-GRITTY**— Innovative therapeutic techniques that facilitate client progress and impact quality of life

Institute Purpose and Goals:

Three music therapists with over seventy-five years of cumulative clinical experience will share innovative ideas that have proven successful in maximizing the quality of life for hundreds of clients with diverse needs in settings across the health care spectrum. The Institute targets experienced music therapists working in a broad range of clinical settings who are looking for new therapeutic techniques, effective music therapy strategies, and fresh music activities.

Goals for this Institute:

- ✿ Institute participants will learn dozens of proven state-of-the-art strategies, therapeutic techniques, and music activities that will immediately impact the quality of their clinical practice.
- ✿ Participants will sharpen their ability to utilize music therapeutically with clients of all ages in a variety of clinical settings.

Scheduled Speakers:

Cathy Knoll, MT-BC; Sally E. Anderson, MM, MT-BC; Barbara Reuer, PhD, MT-BC



Music Therapy as a Related Service: How to Get Into the Public Schools

Wednesday, October 24, 2001

3:30 pm – 10:30 pm

Room C106

**Co-Chairs: Brian Wilson, MM, MT-BC
Alice-Ann Darrow, PhD, RMT**

6 CMTE CREDITS

COST: \$110.00

This institute will address the critical issues facing music therapists interested in developing, implementing, and maintaining services for students with disabilities in school settings. A major emphasis of the institute will be to learn practical strategies and ways to avoid pitfalls. Speakers will include expert clinicians from around the country involved in several different models of service delivery.



Specific topics to be covered include:

- ✿ Where we've been: A brief history of Music Therapy in the schools
- ✿ Overview of IDEA and current regulatory and political realities affecting service delivery
- ✿ Examination of differing models of practice (e.g., contractual, district-wide, consultant, early childhood)
- ✿ Contract development maintenance; avenues for funding
- ✿ Role of assessment in determining eligibility for services
- ✿ Working with parents; when and how to be an advocate
- ✿ Surviving mediation and due process
- ✿ After school programming; transitioning into the community; summer school programming
- ✿ Understanding the needs of and working in collaboration with music educators

Speakers to include:

Alice-Ann Darrow, PhD, RMT; Brian Wilson, MM, MT-BC; Judy Simpson, MT-BC; Michelle Lazar, MT-BC; Amber Weldon-Stephens, MEd, MT-BC; Carol Affholder, RMT; Angie Snell, MT-BC; Mike Brownell, MME, MT-BC; Kathleen Coleman, MMT, MT-BC; Lillieth Grand, MS, MT-BC; Elizabeth Schwartz, MA, MT-BC

Music Psychotherapy for Adults and Children: Neuroscience and Music Therapy

Wednesday, October 24, 2001

3:30 pm – 10:30 pm

Room C107

Chair: Paul Nolan, MCAT, MT-BC

6 CMTE CREDITS

COST: \$110.00

This Institute will provide theory and treatment approaches for psychotherapy with adults and children in various institutional settings. Neuroscience understandings of the positive effects of brain functioning will also be introduced. The format will include experiential components.



the use of music
and outpatient
music therapy on
discussion and

The goals of the Institute include:

- ✿ Increasing awareness of approaches to music psychotherapy with both low and high functioning clients.
- ✿ Articulating a rationale for the use of music psychotherapy based upon neuroscience and psychotherapy perspectives.

The faculty and their topics include:

- ✿ Paul Nolan, MCAT, MT-BC, Director, Music Therapy Education, Creative Arts in Therapy Program MCP Hahnemann University: *"What Music Psychotherapy Offers to Mental Health Treatment"*
- ✿ Karl H. Pribram, MD, Distinguished Research Professor in Cognitive Neurosciences, Georgetown University; Distinguished Emeritus Professor of Neuroscience at Stanford University: *"Music Therapy and Neurosciences: The Relationship between Music and Mental Integration"*
- ✿ Joanne V. Loewy, DA, MT-BC, Director, Music Therapy Program, Beth Israel Medical Center; Faculty, New York University and MCP Hahnemann University Graduate Music Therapy Programs: *"Medical Music Psychotherapy for Toddlers through Adolescents"*
- ✿ Gillian Stephens Langdon, MA, Director of Creative Arts Therapy, Bronx Psychiatric Center: *"The Processes of Music Psychotherapy in the Inpatient Adult Psychiatric Setting: Transforming Chaos and Despair into Meaning, Joy and Community"*
- ✿ Frances Smith Goldberg, MA, MT-BC; Private Practice, Educator for the Bonny Method of Guided Imagery and Music; Faculty member of the Institute for Expressive Therapies: *"Guided Imagery and Music and Other Music-Based Approaches to Music Psychotherapy"*
- ✿ Diane Austin, MA, ACMT, Private Practice in Music Psychotherapy; Faculty, New York University Graduate Music Therapy Program; Director, Adolescent Music Therapy Program at Turtle Bay Music School, NY: *"Vocal Improvisation in Music Psychotherapy"*

Continuing Music Therapy Education Information

Lisa Jackert, MA, MT-BC

Chairperson, AMTA Continuing Education Committee

The AMTA Continuing Education Committee would like to clarify some of the continuing education options available at this conference. Participants may earn five CMTE credits for attending this Conference. CMTE credit is offered for attendance at AMTA Conferences, as AMTA is a pre-approved provider of Continuing Music Therapy Education activities. CBMT Guidelines state that an individual may earn five of these type of CMTE credits per conference with a maximum of fifteen CMTE credits per five year cycle.

Twenty-three intensive workshops and four Institutes are being offered at this year's conference, which are pre-approved by CBMT. Registrants will receive a certificate indicating completion of each learning experience. According to CBMT guidelines, members choosing this option will need only their certificate for documentation; no summary is required. It is mandatory that you be on time and stay for the entire length of the course or Institute for credit.

Umbrella groupings may be combined using some of the workshops at this conference. Umbrella groupings are "a group of related workshops, courses, and programs, each fewer than five contact hours, which may be incorporated under a theme or unifying topic relating to the Examination Content Outline and results in a total of at least five contact hours in duration" (pg. 26 Recertification Manual). Eligibility for this type of educational activity requires documentation from the participant. Umbrella groupings must be completed within a 12-month period. These are not pre-approved activities.

Short event activities are any sessions at this conference, which are fewer than five (5) contact hours of learning activity. In this category, up to 15 CMTE credits per five-year recertification cycle will be allowed by CBMT. Documentation is a certificate or other proof of attendance at the event. It is up to the individuals to monitor their limit. These are not pre-approved activities.

Documentation Required for Non-Pre Approved Education Programs and Umbrella Groupings:

1. The Activity Title
2. Sponsor (AMTA in this instance)
3. Name of Instructor(s)
4. A written summary of the learning experience and its application to music therapy practice and the Examination Content Outline (approximately 250 words)
5. A copy of the conference brochure for the activity
6. Proof of attendance
7. Number of contact hours in each session.
8. Umbrella groupings must list the unifying topic, session titles, date(s) and instructor(s) for each session.

If you have any questions regarding the AMTA continuing education activities at this conference, stop by the Registration desk at the conference. If you have questions regarding the recertification process or accumulation of CMTE credits, contact the Certification Board for Music Therapists. CBMT is ultimately the authority on CMTE requirements for recertification. Remember to pick up your CMTE certificate after each CMTE and your conference attendance certificate at the close of the conference.



CMTE Course Schedule

Thursday, October 25

A. Beyond the Basics: The Art of Music Therapy for Children with Autism

Presenter(s): Michelle R. Hintz, MMT, MT-BC; Marlene Schulefand, MA, MT-BC

7:30 am - 12:30 pm

C107

Level: Professional

This session will focus on the "art" of planning and implementing individual and group music therapy sessions with children ages 4-12 diagnosed with autistic spectrum disorders. Participants will learn to design experiences to address development of pre-learning skills, academic skills, activities of daily living and communication deficits.

B. Object Relations Based Music Psychotherapy

Presenter(s): Janice M. Dvorkin, PsyD, ACMT; Misty Erlund; Roia Rafieyan, MT-BC

7:30 am - 12:30 pm

C106

Level: Professional

This presentation will look at the psychotherapy theory of Object Relations and how its concepts and terms can be applied using music therapy goals and techniques with a variety of populations. Audiotape examples and demonstrations will be provided.

C. Music Learning Theory and Audiation: Implications and Applications in Music Therapy Clinical Practice

Presenter(s): Cynthia Lynn Crump Taggart, PhD; David W. Luce, PhD, MT-BC; Joni Milgram-Luterman, PhD, MTA, MT-BC

7:30 am - 12:30 pm

C105

Level: Professional, Entry, Student

Participants will be introduced to music learning theory and the Types of States of Preparatory Audiation as developed by Edwin Gordon. By recognizing the types and stages of audiation, music therapists have a theoretical basis and music language for communicating assessment, treatment planning, and intervention strategies to interdisciplinary team members.

D. Instrumental/Ensemble Techniques Your Mother Never Told You About

Presenter(s): Leslie Meadows, MT-BC; Carey L. Viton, MT-BC

7:30 am - 12:30 pm

C208

Level: Professional, Entry

In order to reach certain client populations effectively, it is sometimes advisable to use more contemporary instrument sounds. The traditional music therapy curriculum does not always include these instrumental techniques. This workshop will instruct practitioners in a variety of adapted instrumental techniques useful to meet this need.

E. Hip Guitar Skills for Music Therapists

Presenter(s): Thomas A. Dalton, MT-BC

7:30 am - 12:30 pm

C102

This workshop is designed to teach music therapy clinicians hands-on contemporary guitar skills for inclusion in their work, with emphasis on hip chords, strums, progressions, stylistic embellishments, simple leads, songs, and improvisation skills in rock and blues styles. The emphasis is on developing contemporary guitar skills that will allow therapists to be truly creative in how they use guitar in their work. We will also explore melodic and rhythmic improvisation. Sponsored by Fender Musical Instruments.

F. Continuing Education—Making the Most of Your Investment

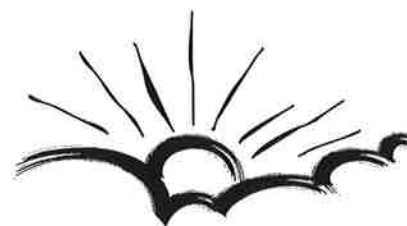
Presenter(s): Nancy A. Hadsell, PhD, MT-BC

7:30 am - 12:30 pm

C104

Level: Professional, Entry, Student

This presentation will focus on assisting new and seasoned MT-BCs with managing their continuing education programs. It will focus on a) understanding the options for continuing education, b) deciding on content areas for education, c) planning a cohesive education program and d) maximizing the benefits accrued from the dollars invested.



G. Music Therapy and the World Traditions of Music and Healing: A Multicultural Perspective

Presenter(s): Joseph Moreno, MA, MME, MT-BC

7:30 am - 12:30 pm

C212

Level: Professional

This presentation will begin with an exploration of a broad spectrum of indigenous music and healing traditions from around the world. This will be followed by a consideration of the shamanic healing practices of the Peruvian Amazon and participant involvement in music therapy applications of the music of India and of the blues.



H. Improvisation Workshop: Developing Musical Resources in Listening and Playing and Applying Them Clinically

Presenter(s): Alan M. Turry, MA, MT-BC

7:30 am - 12:30 pm

C209-210

For experienced music therapists who would like to broaden their palette of musical resources while sharpening their listening skills and clinical perceptions. Focus will include developing listening skills while improvising, creative compositional form within an improvisation, improvising with a sense of mutuality, and moving beyond mirroring to enhancement.

I. Drumming for Health and Wellness

Presenter(s): Ami Belli, MD; Barry Bittman, MD; Karl Bruhn; Christine Stevens, MT-BC

7:30 am - 12:30 pm

C211

Group empowerment drumming has been shown to improve the immune system. Through a specific protocol of enjoyable activities, this approach and other forms of recreational music making are creating new markets for music therapists interested in being involved in the wellness movement. Sponsored by REMO, Inc.

J. The Neurology of Music

Presenter(s): Kathleen M. Howland, PhD, MT-BC

1:30 pm - 6:30 pm

C107

This workshop will provide a review of gross neural anatomy and physiology. A number of areas will be explored including memory, motor function, emotions and reasoning. Music research and its contributions to understanding neural functioning will also be presented.

K. Music Video Therapy

Presenter(s): Alan Reitman, PhD, MT-BC

1:30 pm - 6:30 pm

C105

Level: Entry

Music Video Therapy© combines the process of creating music videos with theme-centered therapy and analysis of group participation. Through a series of goal-directed creative art therapy experiences, at-risk adolescents develop the self-expression and social interaction skills needed to adapt a healthy lifestyle.

L. Internship Director Training (no fee for qualified AMTA members)

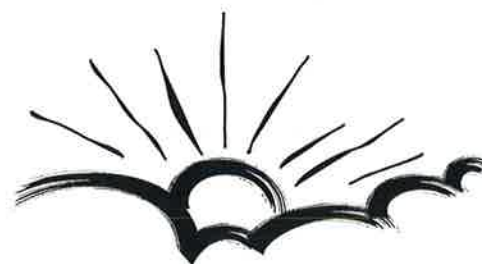
Presenter(s): Kimberly A. Bell, CLS, MT-BC; Ann M. Berlin, MM, MT-BC; Mavis N. Mahlberg, MA, MT-BC; Theresa M. McManus, MT-BC

1:30 pm - 6:30 pm

C104

Level: Professional

This workshop provides a review of the process for developing an Association-approved internship site. All relevant Clinical Training documents will be reviewed. Basic supervisory strategies and performance management techniques will be discussed. A participant who completes this course will fulfill the Association's supervision training requirements to become an internship director.





M. Multicultural and Ethical Issues: Implications for Music Therapy Training and Practice

Presenter(s): Kristen M. Cole, MT-BC; Carolyn Koebel, MT-BC; Terra R Merrill, MMT, MTA; Frederick C. Tims, PhD, MT-BC

1:30 pm - 6:30 pm
C102

Level: Professional, Entry

Through creative learning experiences, including art, music, movement, and cultural and ethical self-reflection, this session will address a wide range of multicultural and ethical issues. Techniques and musical applications for incorporating multiculturalism and ethics into training programs and clinical practice will be demonstrated and participants will be encouraged to bring and share questions and experiences related to this topic.

N. Moving Through the Voice

Presenter(s): Caryl-Beth Thomas, MA, ACMT

1:30 pm - 6:30 pm
C211

This workshop will be an exploration of voice from both the inside out and the outside in. Beginning with our earliest capacities for sounds and gradually moving on to our current relationship with our voices, we will work and play with breath, sound, silence, movement and singing. We will explore a variety of ways in which our sounds are fundamentally connected with breath and movements of the body, and how this may widen the range of our voices and how we use them. Since we will be spending this time together, we will be encountering the communal aspects of our voices as well as our own individual journeys.



O. Public and Private Grantsmanship for Music Therapists

Presenter(s): Michael J. Rohrbacher, PhD, MT-BC; Janice Stouffer, MT-BC; Tamara Zavislan, MMGT, MT-BC

1:30 pm - 6:30 pm
C212

Designed for those who may be at a stage in their career with interest in obtaining significant federal, state, or private foundation funding, including research, demonstration, or service provision projects. Government documents, philanthropic organizations, the internet and other supportive "how to" publications will be presented as resources to help identify appropriate funders, collaborative strategies, and in completing the application process. Specific opportunities will be described through such organizations as the Foundation Center and government offices associated with integrative medicine, special education, mental health, rehabilitation, and aging.

Q. Beyond Deliverance: A Banjo Experiential, Seeger to Scruggs

Presenter(s): Robert Groene, II, PhD, MT-BC

1:30 pm - 6:30 pm
C208

This workshop will cover the history, styles, and basics of the 5-string banjo. We will try several of the different styles of banjo, including clawhammer, frailing, melodic, and bluegrass. Implications for music therapy will be discussed. Banjos will be available for this workshop. Sponsored by Deering Banjo Co.

R. Singing and Playing Fun and Games for Amazing Results!

Presenter(s): Lynn Kleiner

1:30 pm - 6:30 pm
C207

This workshop features joyful activities that give the opportunity for young children to sing alone while others are delighted with percussion, puppets, props and stories. These solo singing opportunities encourage language development and bring great results. Opportunities for individual response increases participation and allows you to measure progress. The songs are short, repetitive and have an easy range. Instrument playing is easy but musical using easy to transport percussion as well as Orff instruments. Sponsored by REMO, Inc.



Sunday, October 28

S. Introduction to Pre and Peri-Natal Music Therapy

Presenter(s): Mary P. Di Camillo, EdD, MT-BC; Cathleen M. O'Neil, MT-BC

2:00 pm - 7:00 pm
C106

Level: Professional

This workshop is designed to introduce all interested professionals to the field of Pre and Peri-Natal Music Therapy. Participants will engage in experiential exercises exploring sensory perception of the developing baby in the womb and learn about music therapy research, clinical practice models and techniques in this field.

T. Music Entrainment for Pain Management

Presenter(s): Joke Bradt, PhD, MT-BC

2:00 pm - 7:00 pm
C105

Level: Professional, Entry

This workshop will discuss physiological, cognitive, affective and social components involved in music entrainment for pain management. A detailed discussion of potential benefits and risks of this intervention will follow explanation and demonstration of the music entrainment process. Participants will have the opportunity to practice this technique.

U. Didactic Workshop in How to Improvise Using the Major Diatonic Modes

Presenter(s): Frank Wagner, MA, CMT

2:00 pm - 7:00 pm
C211

Level: Professional, Entry

The first part of this workshop will consist of theoretical information on formulating and constructing the seven major diatonic modes. The second part will be a hands-on approach to successfully incorporate improvisational mastery on an instrument utilizing the modes.

V. Modeling on the Past, Techniques for the Future

Presenter(s): Joseph Fidelibus, MA, MT-BC; Clive E. Robbins, DHL, DMM, MT-BC

2:00 pm - 7:00 pm
C107

This workshop will provide an in-depth study of a course of music therapy. Careful examination will be given to the process of therapy, clinical techniques, and simulating clinical situations as a means of developing improvisational clinical musicianship.

W. Programme Movie Music Psychotherapy Achieving Emotional, Cognitive, and Behavioral Integration

Presenter(s): James A. Dziwak, MFT, MT-BC

2:00 pm - 7:00 pm
C208

Level: Professional

This introduction to PMMP presents an approach in psychotherapy, which enables a client to evoke associations, and set in motion parts of the psyche that are "stuck." Awareness of themes in the client's life is heightened and clarified with the introduction of carefully prescribed musical selections from Programme Movie Music, allowing access to new insights.



Meeting Schedule

Monday, October 22

2:00 pm - 9:00 pm
SHERATON - CORDOVA
AMTA Executive Board Meeting

Tuesday, October 23

9:30 am - 9:00 pm
SHERATON - CORDOVA
AMTA Executive Board Meeting

Wednesday, October 24

8:00 am - 6:00 pm
C102
Clinical Training Committee

8:00 am - 6:00 pm
C201
Education Committee

2:00 pm - 6:00 pm
C202
Professional Advocacy Committee

3:00 pm - 4:00 pm
C102
Joint Education/Clinical Training
Committees

4:00 pm - 7:00 pm
C207
AMTAS Officers

6:30 pm - 9:30 pm
C102
Standards and Special Target Populations
Committee

7:00 pm - 9:00 pm
C201
Council Coordinators and Committee Chairs

7:00 pm - 10:00 pm
C207
AMTAS Executive Board

7:00 pm - 10:00 pm
C204
Ethics Board

7:00 pm - 10:00 pm
C202
Regional Presidents

Thursday, October 25

8:00 am - 10:00 am
SHERATON - CORDOVA
AMTA Executive Board Meeting

8:00 am - 12:00 pm
C201
Affiliate Relations Committee

8:00 am - 12:00 pm
C204
Education Committee



8:00 am - 12:00 pm
SHERATON - REDWOOD
Employment/Public Relations Committee

8:00 am - 12:00 pm
SHERATON - MAPLE
Professional Advocacy Committee

8:00 am - 12:00 pm
SHERATON - ASPEN
Standards and Special Target Populations
Committee

8:30 am - 12:30 pm
C202
SAAB

9:00 am - 11:00 am
SHERATON - BOARD ROOM
International Relations Committee

9:00 am - 12:00 pm
C207
Government Relations Committee

10:00 am - 12:00 pm
C206
Continuing Education Committee

10:00 am - 12:00 pm
SHERATON - CORDOVA
Regional Presidents

10:00 am - 2:00 pm
C205
Ethics Board

11:00 am - 12:00 pm
C204
Joint Education, Clinical Training and
International Relations Committees

12:45 pm - 2:00 pm
SHERATON - CORDOVA
Research Committee

1:30 pm - 5:30 pm
C106
Assembly of Delegates

3:00 pm - 5:00 pm
SHERATON - CORDOVA
AMTAS Executive Board

5:30 pm - 6:30 pm
SHERATON - CORDOVA
Music Therapy Perspectives Editorial Board

5:30 pm - 7:00 pm
C209
Regional Executive Board - Western

5:30 pm - 7:00 pm
C210
Regional Executive Board - Southwestern

5:30 pm - 7:00 pm
C212
Regional Executive Board - South Central

5:30 pm - 7:00 pm
C206
Regional Executive Board - Southeastern

**M
E
E
T
I
N
G

S
C
H
E
D
U
L
E**



5:30 pm - 7:00 pm
C205
Regional Executive Board - Midwestern

5:30 pm - 7:00 pm
C201
Regional Executive Board - Mid-Atlantic

5:30 pm - 7:00 pm
C202
Regional Executive Board - Great Lakes

5:30 pm - 7:00 pm
SHERATON - ASPEN
Regional Executive Board - New England

Friday, October 26

7:30 am - 9:30 am
C106
Assembly of Delegates

12:00 pm - 1:15 pm
C105
Affiliate Relations Committee

12:00 pm - 1:15 pm
C206
Continuing Education Committee

12:00 pm - 1:15 pm
C205
Employment/Public Relations Committee

12:00 pm - 1:15 pm
C208
Ethics Board

12:00 pm - 1:15 pm
C214
International Relations Committee

12:00 pm - 1:15 pm
C207
Journal of Music Therapy Editorial Board

12:00 pm - 1:15 pm
C104
Judicial Review Board

12:00 pm - 1:15 pm
C212
Professional Advocacy Committee

12:00 pm - 1:15 pm
C209
Reimbursement Task Force

12:00 pm - 1:15 pm
C102
Standards/Special Target Populations Committee

5:00 pm - 6:30 pm
EXHIBIT HALL THEATRE
AMTA Business Meeting

5:00 pm - 7:30 pm
C107
AMTAS Business Meeting

Saturday, October 27

8:00 am - 9:15 am
C207
Regional Meeting - Western

8:00 am - 9:15 am
C212
Regional Meeting - Southwestern

8:00 am - 9:15 am
C209-210
Regional Meeting - South Central

8:00 am - 9:15 am
C104
Regional Meeting - Southeastern

8:00 am - 9:15 am
C105
Regional Meeting - Midwestern

8:00 am - 9:15 am
C106
Regional Meeting - Mid-Atlantic

8:00 am - 9:15 am
C107
Regional Meeting - Great Lakes

8:00 am - 9:15 am
C102
Regional Meeting - New England

9:30 am - 11:30 am
SHERATON - CORDOVA
AMTA Executive Board Meeting

11:15 am - 1:15 pm
C106
Assembly of Delegates

5:30 pm - 7:00 pm
EXHIBIT HALL THEATRE
AMTA Business Meeting

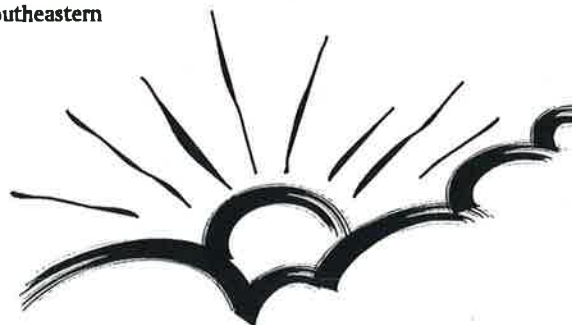
5:30 pm - 7:00 pm
C107
AMTAS Business Meeting

7:00 pm - 8:30 pm
C104
Autism Task Force

Sunday, October 28

7:00 am - 8:00 am
C106
Assembly of Delegates-Elect Meeting

9:45 am - 11:45 am
SHERATON - CORDOVA
AMTA Executive Board Meeting



Session Schedule

— Monday, Tuesday, Wednesday

Monday, October 22

9:00 am - 7:00 pm

SHERATON - COLORADO

Guided Imagery and Music: Level I Training

Presenter(s): Cecilia Schulberg, MT-BC; Lisa R. Summer, MCAT, MT-BC

Pre-approval, pre-registration and fee required.

2:00 pm - 9:00 pm

SHERATON - CORDOVA

AMTA Executive Board Meeting

8:00 am - 6:00 pm

C102

Clinical Training Committee

8:00 am - 6:00 pm

C201

Education Committee

9:00 am - 7:00 pm

SHERATON - COLORADO

Level: Professional

Guided Imagery and Music: Level I Training

(con't)

3:30 pm - 10:30 pm

C106

Institute: Music Therapy as a Related Service: How to Get into the Public Schools

Presenter(s): Carol A. Affholder, RMT; Mike D. Brownell, MME, MT-BC; Kathleen Coleman, MMT, MT-BC; Alice-Ann Darrow, PhD, RMT; Lillieth Grand, MS, MT-BC; Michelle Lazar, MT-BC; Elizabeth Schwartz, MT-BC; Judy Simpson, MT-BC; Angela M. Snell, MT-BC; Amber S. Weldon-Stephens, MEd, MT-BC; Brian L. Wilson, MM, MT-BC

6 credit hours - Pre-registration and fee required.

Contact: Brian L. Wilson, MM, MT-BC, School of Music, Western Michigan University, Kalamazoo, MI 49008

Tuesday, October 23

9:00 am - 7:00 pm

SHERATON - COLORADO

Level: Professional

Guided Imagery and Music: Level I Training

(con't)

9:30 am - 9:00 pm

SHERATON - CORDOVA

AMTA Executive Board Meeting

7:00 pm - 9:00 pm

CONFERENCE CENTER (ENTRANCE LOBBY)

Registration Open

1:00 pm - 5:00 pm

CONFERENCE CENTER

Registration Open

2:00 pm - 6:00 pm

C202

Professional Advocacy Committee

3:00 pm - 4:00 pm

C102

Joint Education/Clinical Training Committees

3:30 pm - 10:30 pm

C107

Institute: Music Psychotherapy for Adults and Children: Neuroscience and Music Therapy Perspectives

Presenter(s): Diane Austin, MA, ACMT; Frances Smith Goldberg, MA, MT-BC; Gillian S. Langdon, MA; Joanne Loewy, DA, MT-BC; Paul Nolan, MCAT, MT-BC; Karl Pribram, MD

6 credit hours - Pre-registration and fee required.

Contact: Paul Nolan, MCAT, MT-BC, 5915 Pulaski Avenue, Philadelphia, PA 19144

3:30 pm - 10:30 pm

C104 AND C105

Level: Professional, Entry

Institute: Raising the Bar in Clinical Practice: Innovative Music Therapy Strategies, Activities, and Techniques

Presenter(s): Sally E. Anderson, MM, MT-BC; Catherine D. Knoll, MT-BC; Barbara L. Reuer, PhD, MT-BC

6 credit hours - Pre-registration and fee required.

Contact: Catherine D. Knoll, MT-BC, 1250 Ollie Street, Stephenville, TX 76401

Wednesday, October 24

7:00 am - 11:30 am

CONFERENCE CENTER

Registration Open

8:00 am - 3:00 pm

C107

Institute: Neurologic Music Therapy: Neuroscientific Model and Evidence-Based Clinical Practice

Presenter(s): Alicia A. Clair, PhD, MT-BC; Amy Culpepper, MT-BC; Francesca Mancini, MD; Gerald McIntosh, MD; Marjorie O'Konski, MME, MT-BC; Suzanne E. Oliver, MT-BC; Jennifer Rathbun, MM, MT-BC; Corene P. Thaut, MM, MT-BC; Michael H. Thaut, PhD, RMT

6 credit hours - Pre-registration and fee required.

Contact: Michael H. Thaut, PhD, RMT, Colorado State University, Dept of Music, Fort Collins, CO 80523

4:00 pm - 7:00 pm

C207

AMTAS Officers

6:30 pm - 9:30 pm

C102

Standards and Special Target Populations Committee

7:00 pm - 9:00 pm

C201

Council Coordinators and Committee Chairs

7:00 pm - 10:00 pm

C207

AMTAS Executive Board

7:00 pm - 10:00 pm

C204

Ethics Board

7:00 pm - 10:00 pm

C206

Regional Presidents



Thursday

Thursday, October 25

7:00 am - 11:30 am
CONFERENCE CENTER
Registration Open

7:30 am - 12:30 pm
C107
Level: Professional

A. Beyond the Basics: The Art of Music Therapy for Children with Autism

Presenter(s): Michelle R. Hintz, MMT, MT-BC;
Marlene Schulefand, MA, MT-BC
Presider: Alan Reitman, PhD, MT-BC

This session will focus on the "art" of planning and implementing individual and group music therapy sessions with children ages 4-12 diagnosed with autistic spectrum disorders. Participants will learn to design experiences to address development of pre-learning skills, academic skills, activities of daily living and communication deficits.

5 credit hours — Pre-registration and fee required
Contact: Michelle R. Hintz, MMT, MT-BC,
1115 N. 14th Avenue, Hollywood, FL
33020

7:30 am - 12:30 pm
C106
Level: Professional

B. Object Relations Based Music Psychotherapy

Presenter(s): Janice M. Dvorkin, PsyD, ACMT;
Misty Erlund; Roia Rafieyan, MT-BC
Presider: Roia Rafieyan, MT-BC

This presentation will look at the psychotherapy theory of Object Relations and how its concepts and terms can be applied using music therapy goals and techniques with a variety of populations. Audiotape examples and demonstrations will be provided.

5 credit hours — Pre-registration and fee required

Contact: Janice M. Dvorkin, PsyD,
ACMT, 2554 NE Loop 410, Apt.
606, San Antonio, TX 78217



7:30 am - 12:30 pm
C105

C. Music Learning Theory and Audiation: Implications and Applications in Music Therapy Clinical Practice

Presenter(s): Cynthia Lynn Crump Taggart,
PhD; David W. Luce, PhD, MT-BC
Presider: Joni Milgram-Luterman, PhD,
MTA, MT-BC

Participants will be introduced to music learning theory and the Types of States of Preparatory Audiation as developed by Edwin Gordon. By recognizing the types and stages of audiation, music therapists have a theoretical basis and music language for communicating assessment, treatment planning, and intervention strategies to interdisciplinary team members.

5 credit hours — Pre-registration and fee required
Contact: David W. Luce, PhD, MT-BC,
2111 Hazel Street, Oshkosh, WI 54901

7:30 am - 12:30 pm
C208

D. Instrumental/Ensemble Techniques Your Mother Never Told You About

Presenter(s): Leslie Meadows, MT-BC; Carey L.
Viton, MT-BC

In order to reach certain client populations effectively, it is sometimes advisable to use more contemporary instrument sounds. The traditional music therapy curriculum does not always include these instrumental techniques. This workshop will instruct practitioners in a variety of adapted instrumental techniques useful to meet this need.

5 credit hours — Pre-registration and fee required

Contact: Carey L. Viton, MT-BC,
Berea Children's Center, 202 E.
Bagley Rd., Berea, OH 44017

7:30 am - 12:30 pm
C102

E. Hip Guitar Skills for Music Therapists

Presenter(s): Thomas A. Dalton,
MT-BC

This workshop is designed to teach music therapy clinicians hands-on contemporary guitar skills for inclusion in their work, with emphasis on hip chords, strums, progressions, stylistic embellishments, simple leads, songs, and improvisation skills in rock and blues styles. The emphasis is on developing contemporary guitar skills that will allow

therapists to be truly creative in how they use guitar in their work. We will also explore melodic and rhythmic improvisation. Sponsored by Fender Musical instruments.

5 credit hours — Pre-registration and fee required
Contact: Thomas A. Dalton, MT-BC, 337
Columbia Dr, Lake Worth, FL 33460-6203

7:30 am - 12:30 pm
C104

F. Continuing Education—Making the Most of Your Investment

Presenter(s): Nancy A. Hadsell, PhD, MT-BC
Presider: Leslie L. Hunter, MME, MT-BC

This presentation will focus on assisting new and seasoned MT-BCs with managing their continuing education programs. It will focus on a) understanding the options for continuing education, b) deciding on content areas for education, c) planning a cohesive education program and d) maximizing the benefits accrued from the dollars invested.

5 credit hours — Pre-registration and fee required
Contact: Nancy A. Hadsell, PhD, MT-BC,
2427 Foxcroft Circle, Denton, TX 76209-
1533

7:30 am - 12:30 pm
C214

G. Music Therapy and the World Traditions of Music and Healing: A Multicultural Perspective

Presenter(s): Joseph Moreno, MA, MME,
MT-BC

This presentation will begin with an exploration of a broad spectrum of indigenous music and healing traditions from around the world. This will be followed by a consideration of the shamanic healing practices of the Peruvian Amazon and participant involvement in music therapy applications of the music of India and of the blues.

5 credit hours — Pre-registration and fee required
Contact: Joseph Moreno, MA, MME,
MT-BC, Maryville University, 13550
Conway Rd, St Louis, MO 63141

7:30 am - 12:30 pm
C209-210

H. Improvisation Workshop: Developing Musical Resources in Listening and Playing and Applying Them Clinically

Presenter(s): Alan M. Turry, MA, MT-BC

For experienced music therapists who would like to broaden their palette of musical resources while sharpening their

Thursday

listening skills and clinical perceptions. Focus will include developing listening skills while improvising, creative compositional form within an improvisation, improvising with a sense of mutuality, and moving beyond mirroring to enhancement.

5 credit hours — Pre-registration and fee required

Contact: Alan M. Turry, MA, MT-BC, 328 W. 19th St. #3D, New York, NY 10011

7:30 am - 12:30 pm
C211

I. Drumming for Health and Wellness

Presenter(s): Ami Belli, MD; Barry Bittman, MD; Karl Bruhn; Christine Stevens, MT-BC

Group empowerment drumming has been shown to improve the immune system. Through a specific protocol of enjoyable activities, this approach and other forms of recreational music making are creating new markets for music therapists interested in being involved in the wellness movement. Sponsored by REMO, Inc.

5 credit hours — Pre-registration and fee required

Contact: Christine Stevens, MT-BC, 28101 Industry Drive, Valencia, CA 91355

8:00 am - 10:00 am
SHERATON - CORDOVA

AMTA Executive Board Meeting

8:00 am - 12:00 pm
C201

Affiliate Relations Committee

8:00 am - 12:00 pm
C204

Education Committee

8:00 am - 12:00 pm
SHERATON - REDWOOD

Employment/Public Relations Committee

8:00 am - 12:00 pm
SHERATON - MAPLE

Professional Advocacy Committee

8:00 am - 12:00 pm
SHERATON - ASPEN

Standards and Special Target Populations Committee

8:30 am - 12:30 pm
C202
SAAB

9:00 am - 12:00 pm
C207

Government Relations Committee

9:00 am - 11:00 am
SHERATON - BOARD ROOM

International Relations Committee

9:00 am - 7:00 pm
SHERATON - COLORADO

Level: Professional

Guided Imagery and Music: Level I Training (con't)

Presenter(s): Cecilia Schulberg, MT-BC; Lisa R. Summer, MCAT, MT-BC

Contact: Lisa R. Summer, MCAT, MT-BC, 15 Brewster Rd, Worcester, MA 01602

10:00 am - 12:00 pm
C206

Continuing Education Committee

10:00 am - 12:00 pm
SHERATON - CORDOVA

Regional Presidents

10:00 am - 2:00 pm
C205

Ethics Board

11:00 am - 12:00 pm
C204

Joint Education, Clinical Training and International Relations Committees

12:00 pm - 2:00 pm
CONFERENCE CENTER

Cash Lunch

12:45 pm - 2:00 pm
SHERATON - CORDOVA

Research Committee

1:00 pm - 5:00 pm
CONFERENCE CENTER

Registration Open

1:30 pm - 5:30 pm
C106

Assembly of Delegates

1:30 pm - 6:30 pm
C107

J. The Neurology of Music

Presenter(s): Kathleen M. Howland, PhD, MT-BC

This workshop will provide a review of gross neural anatomy and physiology. A number of areas will be explored including

memory, motor function, emotions and reasoning. Music research and its contributions to understanding neural functioning will also be presented.

5 credit hours — Pre-registration and fee required

Contact: Kathleen M. Howland, PhD, MT-BC, 6 Hanna Road, Framingham, MA 01701

1:30 pm - 6:30 pm
C105

Level: Entry

K. Music Video Therapy

Presenter(s): Alan Reitman, PhD, MT-BC

Presider: Michelle R. Hintz, MMT, MT-BC

Music Video Therapy® combines the process of creating music videos with theme-centered therapy and analysis of group participation.

Through a series of goal-directed creative art therapy experiences, at-risk adolescents develop the self-expression and social interaction skills needed to adapt a healthy lifestyle.

5 credit hours — Pre-registration and fee required

Contact: Alan Reitman, PhD, MT-BC, 1115 North 14th Ave, Hollywood, FL 33020-3716

1:30 pm - 6:30 pm
C104

Level: Professional

L. Internship Director Training

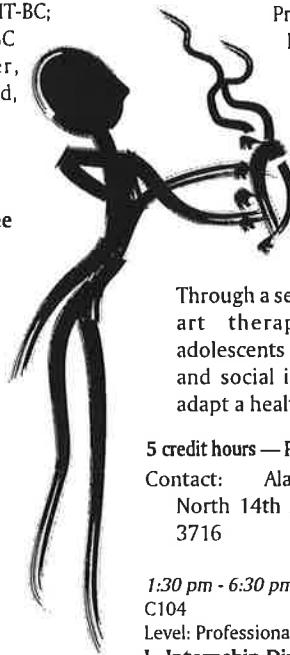
Presenter(s): Kimberly A. Bell, CLS, MT-BC; Ann M. Berlin, MM, MT-BC; Mavis N. Mahlberg, MA, MT-BC; Theresa M. McManus, MT-BC

Presider: Mavis N. Mahlberg, MA, MT-BC

This workshop provides a review of the process for developing an Association-approved internship site. All relevant Clinical Training documents will be reviewed. Basic supervisory strategies and performance management techniques will be discussed. A participant who completes this course will fulfill the Association's supervision training requirements to become an internship director.

5 credit hours — Pre-registration and fee required

Contact: Mavis N. Mahlberg, MA, MT-BC, 3618 Wyoming #3, Kansas City, MO 64111



Thursday

1:30 pm - 6:30 pm

C102

Level: Professional, Entry

M. Multicultural and Ethical Issues:

Implications for Music Therapy Training and Practice

Presenter(s): Kristen M. Cole, MT-BC; Carolyn Koebel, MT-BC; Terra R Merrill, MMT, MTA; Frederick C. Tims, PhD, MT-BC

Through creative learning experiences, including art, music, movement, and cultural and ethical self-reflection, this session will address a wide range of multicultural and ethical issues. Techniques and musical applications for incorporating multiculturalism and ethics into training programs and clinical practice will be demonstrated and participants will be encouraged to bring and share questions and experiences related to this topic.

5 credit hours — Pre-registration and fee required

Contact: Frederick C. Tims, PhD, MT-BC, 1987 Valleybrook Drive, Okemos, MI 48864

1:30 pm - 6:30 pm

C211

N. Moving Through the Voice

Presenter(s): Caryl-Beth Thomas, MA, ACMT

This workshop will be an exploration of voice from both the inside out and the outside in. Beginning with our earliest capacities for sounds and gradually moving on to our current relationship with our voices, we will work and play with breath, sound, silence, movement and singing. We will explore a variety of ways in which our sounds are fundamentally connected with breath and movements of the body, and how this may widen the range of our voices and how we use them. Since we will be spending this time together, we will be encountering the communal aspects of our voices as well as our own individual journeys.

5 credit hours — Pre-registration and fee required

Contact: Caryl-Beth Thomas, MA, ACMT, 27 Weston Street, Hyde Park, MA 02136

1:30 pm - 6:30 pm

C214

O. Public and Private Grantsmanship for Music Therapists

Presenter(s): Michael J. Rohrbacher, PhD, MT-BC; Janice Stouffer, MT-BC; Tamara Zavislan, MMT, MT-BC

Designed for those who may be at a stage in their career with interest in obtaining significant federal, state, or private foundation funding, including research,

demonstration, or service provision projects. Government documents, philanthropic organizations, the Internet and other supportive "how to" publications will be presented as resources to help identify appropriate funders, collaborative strategies, and in completing the application process. Specific opportunities will be described through such organizations as the Foundation Center and government offices associated with integrative medicine, special education, mental health, rehabilitation, and aging.

5 credit hours — Pre-registration and fee required

Contact: Michael J. Rohrbacher, PhD, MT-BC, 102 Russelcroft Road, Winchester, VA 22601

1:30 pm - 6:30 pm

C208

Q. Beyond Deliverance: A Banjo Experiential, Seeger to Scruggs

Presenter(s): Robert Groene, II, PhD, MT-BC

This workshop will cover the history, styles, and basics of the 5-string banjo. We will try several of the different styles of banjo, including clawhammer, frailing, melodic, and bluegrass. Implications for music therapy will be discussed. Banjos will be available for this workshop. Sponsored by Deering Banjo Co.

5 credit hours — Pre-registration and fee required

Contact: Robert Groene, II, PhD, MT-BC, University of Missouri-Kansas City, Conservatory of Music, Kansas City, MO 64110

1:30 pm - 6:30 pm

C207

R. Singing and Playing Fun and Games for Amazing Results!

Presenter(s): Lynn Kleiner

This workshop features joyful activities that give the opportunity for young children to sing alone while others are delighted with percussion, puppets, props and stories. These solo singing opportunities encourage language development and bring great results. Opportunities for individual response increases participation and allows you to measure progress. The songs are short, repetitive and have an easy range. Instrument playing is easy but musical using easy to transport percussion as well



as Orff instruments. Sponsored by REMO, Inc.

5 credit hours — Pre-registration and fee required

Contact: Lynn Kleiner, 1524 Gates Avenue, Manhattan Beach, CA 90266

2:30 pm - 5:00 pm

EXHIBIT HALL

Exhibits Open

3:00 pm - 5:00 pm

SHERATON - CORDOVA

AMTAS Executive Board

5:30 pm - 6:30 pm

SHERATON - CORDOVA

Music Therapy Perspectives Editorial Board

5:30 pm - 7:00 pm

C209

Regional Executive Board - Western

5:30 pm - 7:00 pm

C210

Regional Executive Board - Southwestern

5:30 pm - 7:00 pm

C212

Regional Executive Board - South Central

5:30 pm - 7:00 pm

C206

Regional Executive Board - Southeastern

5:30 pm - 7:00 pm

C205

Regional Executive Board - Midwestern

5:30 pm - 7:00 pm

C201

Regional Executive Board - Mid-Atlantic

5:30 pm - 7:00 pm

C202

Regional Executive Board - Great Lakes

5:30 pm - 7:00 pm

SHERATON - ASPEN

Regional Executive Board - New England

7:30 pm - 9:00 pm

EXHIBIT HALL THEATRE

Opening Session Featuring Martha Curtis

9:00 pm - 10:30 pm

EXHIBIT HALL

Spectacular Exhibit Grand Opening, Silent Auction and Reception

Thursday, Friday

10:00 pm - 2:00 am
SHERATON - COLORADO
Jam Room

Friday, October 26

6:30 am - 8:30 am
CONFERENCE CENTER
Cash Breakfast

7:00 am - 8:00 am
CONFERENCE CENTER
Networking Breakfasts

Developmentally Disabled
Disaster Relief
Early Childhood
Forensics/Corrections
Geriatrics
General Medical
International Relations C103
Mental Health
Music Therapy Education
Rehabilitation
Self Employment
Special Education
Substance Abuse



7:00 am - 11:30 am
CONFERENCE CENTER
Registration Open

7:30 am - 9:30 am
C106
Assembly of Delegates

8:00 am - 9:30 am
C205
Level: Entry
Beginner's Notes: Lessons Learned in the First Three Years of Practice

Presenter(s): Laurie Crosse

In college, students have the support of professors, peers, and supervisors. When they transition to the workplace, this support dwindles. Participants in this session can hear one person's account; share experiences they have had; and offer students, new practitioners, professors, internship supervisors, and managers suggestions for easing this important transition.

Contact: Laurie Crosse, 215 Liberty Avenue, Westbury, NY 11590

8:00 am - 9:30 am
C214
Level: Professional
Developing Standards of Practice for Music Therapy in the Special Care Nurseries

Presenter(s): Deanna Hanson Abromeit, MT-BC

Prsident: Shannon K. del'Etoile, PhD, MT-BC

This presentation describes a music therapy program as part of a developmental care team in a special care nursery caring for premature and critically ill infants. Case study examples illustrate music therapy interventions appropriate to the developmental stages of these infants, as addressed through the nursing philosophy of developmental care.

Contact: Deanna Hanson Abromeit, MT-BC, 625 South Governor Street, Iowa City, IA 52240

8:00 am - 9:30 am
C102
Level: Entry
Ensemble Approaches in Music Therapy

Presenter(s): Judy Belland, MCAT, MT-BC
Prsident: Marie Di Giammarino, EdD, MT-BC

Ensemble approaches are structured musical experiences in which each group participant is taught a specific part to play. In this workshop, participants experience playing in ensembles, adapting ensembles for clients' special needs, and developing original parts. Topics also include goals and objectives that may be addressed through these approaches.

Contact: Judy Belland, MCAT, MT-BC, 703 Fairmont Dr., Apt. 8, Bloomington, IL 61704

8:00 am - 9:30 am
C105
Level: Entry
Geriatric Music Therapy Assessment in Long-Term Care Facilities

Presenter(s): Kimberly B. Crowell-Oravec, MT-BC; Dianne Tow, MT-BC
Prsident: Karen S. Wacks, EdM, LMHC

A newly developed music therapy assessment allows therapists to identify functional deficits and to structure sessions to meet residents' cognitive, communication, physical, and social skills goals using tests adapted from the MDS 2.0. Participants receive a copy of the assessment and an instruction packet. The

possibilities for reimbursement are discussed.

Contact: Kimberly B. Crowell-Oravec, MT-BC, 94 Washington Street, Apt. 1F, North Easton, MA 02356

8:00 am - 9:30 am
C207
Level: Entry
Get Into the Beat - Schlagwerk Percussion Instruments and their Therapeutic Use

Presenter(s): Greg Ellis; Petra Kern, DBVMT
Prsident: Laura J. DeLoye, MT-BC

This workshop teaches basic drumming techniques with Schlagwerk percussion instruments, along with their archetypal and traditional usage. Participants learn to create unique sounds and rhythms, and develop skills that allow them new insights into the use of percussion instruments for assessment and for a wide range of therapeutic applications.

Contact: Greg Ellis, 6160 Glen Alder, Los Angeles, CA 90068

8:00 am - 9:30 am
C212
Level: Entry
How to Reach, Stimulate and Energize Persons with Dementia

Presenter(s): Diana D. Ice, MME, MT-BC
Prsident: Susan M. Knechtel, MT-BC

In this experiential workshop, the presenter shares her strategies and interventions for interacting and making music with clients with dementia, describing interventions which encourage clients to use residual abilities, while connecting with them personally. The session covers greeting, singing, vibrotactile stimulation, drumming, movement, and documentation using a comprehensive behavioral checklist.

Contact: Diana D. Ice, MME, MT-BC, 1713 St. Andrews Dr., Lawrence, KS 66047

8:00 am - 9:30 am
C208
Level: Entry
Let's Boogie! Easy Guitar Boogie Patterns, Songs and Uses

Presenter(s): Ted Jordan, MA, MT-BC
Prsident: Paul Nolan, MCAT, MT-BC

This session teaches an easy boogie pattern in the key of 'A.' Participants learn how to substitute this pattern for I, IV, and V chords in several songs. Variations of the pattern are demonstrated, and uses with various client populations are

Friday

discussed. Participants are strongly encouraged to bring a guitar.

Contact: Ted Jordan, MA, MT-BC, 201 Preston Road, Flourtown, PA 19031

8:00 am - 9:30 am
C201-202

Level: Professional, Entry, Student

Music Therapy, Technology, and Pediatrics

Presenter(s): Eric G. Waldon, MA, MT-BC; David E. Wolfe, PhD, RMT

Prsident: Audree S. O'Connell, MA, MT-BC

This presentation discusses the use of audio and computer technology within a pediatric setting. Specifically, the presenters demonstrate: 1) Computer-based Music Perception Assessment for Children (CMPAC); 2) Music Attentiveness Screening Assessment (MASA); and 3) music therapy interventions used during painful pediatric procedures.

Contact: David E. Wolfe, PhD, RMT, University of the Pacific, Dept of Music Therapy, Stockton, CA 95211

8:00 am - 9:30 am
C204

Level: Entry, Student

Rhythmic Auditory Stimulation (RAS) Gait Training for Improving Velocity and Gait Symmetry

Presenter(s): Eun-Mi Kwak, MME, MT-BC

Prsident: Alicia A. Clair, PhD, MT-BC

This presentation provides research results from clinical applications of gait training and pre-gait training using the rhythmic aspect of music. The presenter discusses the definition of RAS, the theoretical basis for RAS, video clips of gait training with RAS, gait analysis equipment, and interventions.

Contact: Eun-Mi Kwak, MME, MT-BC, #610 Hyundai Goldentel, Kwangjin-Gu Kwangjang-Dong 114, Seoul, REPUBLIC OF KOREA 143-802

8:00 am - 9:30 am
C206

Level: Professional, Entry, Student

Slowing the Tempo - Time and Space in Music with Children with Canavan Disease

Presenter(s): Terry Gutterman Watson, MA, CMT

Prsident: Diane Austin, MA, ACMT

This presentation focuses on very young children with Canavan Disease. These children are multiply handicapped and medically fragile, however their hearing can remain sharp and intact, allowing music therapy to be a meaningful intervention. The presenter's personal

process and clinical insights while working with these clients are described.

Contact: Terry Gutterman Watson, MA, CMT, 506 Westminster Rd., Brooklyn, NY 11218

8:00 am - 9:30 am
C104

Level: Entry

Song Signing to Enhance Language Development in Children with Hearing Losses

Presenter(s): Alice-Ann Darrow, PhD, RMT; Kate E. Gfeller, PhD, RMT

Prsident: Mary S. Adamek, PhD, MT-BC

Language development is typically a focus in the rehabilitation and education of children with significant hearing losses. This presentation includes a discussion of language development relative to chronological age and communicative functionality, and describes uses of song signing, song writing, instrumental improvisation, and performance that facilitate language development.

Contact: Kate E. Gfeller, PhD, RMT, 1 Oak Park Court, Iowa City, IA 52246

8:00 am - 9:30 am
C107

Level: Professional

The Arthur Flagler Fultz Research Fund: The Effects of Music and Music Combined with Mother's Voice on Physiological Measures for Critically Ill Children

Presenter(s): Janice W. Stouffer, MT-BC

Prsident: James L. Haines, PhD, MT-BC

This collaborative study was conducted by a multi-disciplinary team within a medical hospital. The primary purpose was to compare the effects of prepared audiotapes on physiological variables, level of sedation, and requirements for sedating agents. Planning considerations, methods and procedures, and preliminary results will be shared, followed by group discussion of implications for future research.

Contact: Janice W. Stouffer, MT-BC, 1353 Hickory Run Drive, Elizabethtown, PA 17022

8:00 am - 9:30 am
C209-210

Level: Professional

The Old Suit Just Doesn't Fit Anymore

Presenter(s): Paul I. Martin, MT-BC

Prsident: Dale B. Taylor, PhD, MT-BC

Music therapists should be prepared to embrace and utilize new research to understand the how and why of music in therapy or rehabilitation. Roundtable

participants analyze contrasting clinical scenarios to determine what the therapy involves at all levels, and the presenter also offers a restructuring plan for music therapy training.

Contact: Paul I. Martin, MT-BC, 257 Senate Street, NW, Salem, OR 97304

8:00 am - 9:30 am
C211

West African Drumming

Presenter(s): Leon Mobley

Leon Mobley, a talented and spiritual African drumming instructor and Remo Signature Series artist began studying with Babatunde Olatunji at the tender age of 7 and has been performing with him for over 25 years. In addition, Leon has studied in Senegal, Guinea and the Gambia, West Africa. At the age of 10, Leon was part of the popular television program, ZOOM! He has worked and recorded with the likes of Madonna, Michael Jackson, Macy Gray, and Ben Harper. Leon will give basic djembe instruction and discuss the cultural roots of the rhythms of West Africa. Sponsored by REMO, Inc.

Contact: Christine Stevens, MT-BC, 28101 Industry Drive, Valencia, CA 91355

9:30 am - 1:30 pm
EXHIBIT HALL
Exhibits

9:45 am - 11:45 am
C204

Between Chaos and Creative Expression: The Role of Improvised Songs and Instrumental Music in Group Music Therapy

Presenter(s): John Mahoney, MA, MT-BC, NRMT; Michele Schnur Ritholz, MA, MT-BC, NRMT

Prsident: Joseph Fidelibus, MA, MT-BC

This presentation will explore the use of improvised music in a dynamic group comprised of four young adults with diverse levels of cognitive and verbal abilities. Video excerpts demonstrate how feelings and ideas—both music and verbal—are acknowledged and expanded upon through music, nurturing individual growth and relationships

Contact: Michele Schnur Ritholz, MA, NRMT, MT-BC, 41 Euclid Ave, Hastings-On-Hudson, NY 10706



Friday

9:45 am - 11:45 am
C105

Breakthrough to Improv: The Secrets of Improvisation

Presenter(s): Dave Frank

Improvisation is a natural human ability, the spontaneous creation of new music transmitted from the soul to the fingers. Berklee Prof. Dave Frank, author of Hal Leonard's popular book and video series, JOY OF IMPROV, and BREAKTHROUGH TO IMPROV, will present an interactive workshop to help aspiring improvisers to learn how to tap into the infinite source of music within them.

Contact: Dave Frank, 124 Boston Ave., Medford, MA 02155

9:45 am - 11:45 am
C209-210

Level: Entry

Bridging the Gap: Using Contemporary Music with Adolescents in Therapy

Presenter(s): Joy E. Daiber, MT-BC; Rebecca J. Van Wechel, MT-BC

This presentation helps participants increase their knowledge of contemporary music popular with adolescents in today's society. Participants have the opportunity to listen to, play, and create instrumentation for contemporary music, as well as create individualized session plans relevant to their adolescent client needs. Extensive resources are provided.

Contact: Joy E. Daiber, MT-BC, 2748 Sandy Lake Rd., Ravenna, OH 44266-8282

9:45 am - 11:45 am
C104

Dancing and Playing Fun and Games

Presenter(s): Lynn Kleiner

This workshop includes movement and instrument playing that is musical, joyful and active! Little stories and dramas make the musical activities exciting to young children. Young children are especially eager to participate when materials are presented with puppets, felts, and props. The repetition of the easy songs and rhymes bring success to the singing and playing. Easy to transport percussion will be used as well as Orff instruments. Sponsored by REMO, Inc.

Contact: Lynn Kleiner, 1524 Gates Avenue, Manhattan Beach, CA 90266



9:45 am - 11:45 am
C212

Level: Professional, Entry, Student Developing Effective Strategies for the Vocal, Percussion, and Movement Training of Music Therapy Students

Presenter(s): Carolyn Koebel, MT-BC; Edward A. Roth, MM, MT-BC

This session engages participants in a full body experience, incorporating elements of time, force, and space in vocal, instrumental, and movement improvisations focusing on increasing kinesthetic awareness. The session explores relevant issues in the motor learning and music therapy literature, and discusses implications for the training of music therapists.

Contact: Carolyn Koebel, MT-BC, 522 S. Rose Street, Apt. 1, Kalamazoo, MI 49007

9:45 am - 11:45 am
C211

Educator's Forum (con't): The Competencies within the Full Scope of the Music Therapy Curriculum

Presenter(s): Michael G. McGuire, MM, MT-BC; Tracy Richardson, MS, MT-BC
Presenter: David S. Smith, PhD, MT-BC

These sessions will focus on three issues related to the AMTA Standards for Education and Clinical Training, the educator's expanded role, competency-based curriculum, and clinical training experiences. Opportunities to ask questions, receive feedback, and get clarification on implementation plans will be provided. This presentation will address how the AMTA Professional Competencies can be applied throughout the educational experience of the music therapy student as part of course work, pre-clinical training and internship. It will examine various ways the competencies have an impact on the music therapy curriculum. The presenters will discuss how they have rethought their curricula, given the new Education and Clinical Standards. Various competency evaluation forms will be provided, and an open exchange between participants and presenters will be invited.

Contact: David S. Smith, PhD, MT-BC, Western Michigan University, School of Music, Kalamazoo, MI 49008-3831

9:45 am - 11:45 am
C205

Level: Professional, Entry, Student Ethical Thinking, More Than Confidentiality

Presenter(s): Deborah S. Bates, MT-BC; Carol L. Shultis, MEd, MT-BC

Presenter: Karen S. Jasko, MS, FAMI, MT-BC

Ethics in music therapy covers a broad spectrum of topics. Most music therapists are familiar with confidentiality and state laws. However, other ethical issues, such as informed consent and dual relationships, face music therapists on a daily basis. This session discusses these areas and their implications for our clinical work.

Contact: Carol L. Shultis, MEd, MT-BC, Forbes Music Therapy, 500 Finley Street, Pittsburgh, PA 15206-4158

9:45 am - 11:45 am
C206

Level: Professional, Entry

More Than Positive Reinforcement: Music Therapy and Applied Behavior Analysis

Presenter(s): Christine Accardo; Jenny Davis, MT-BC

This panel examines how to incorporate music therapy and Applied Behavior Analysis (ABA) for children with autism spectrum disorders. Attendees learn how ABA programs are designed and how to blend them with music therapy, and receive samples of integrated programs.

Contact: Jenny Davis, MT-BC, 32 Elanore Drive, Ballwin, MO 63021-7702

9:45 am - 11:45 am
C208

Level: Entry

Music Making and Wellness for Mature Adults: Making Lowrey Magic!

Presenter(s): Karl Bruhn; Alicia A. Clair, PhD, MT-BC; Julie Romeo; Melvin Wisniewski; Amy Zang, MT-BC

Presenter: Nancy A. Hadsell, PhD, MT-BC

Active music making is becoming a recognized component for wellness in the twenty-first century. This panel presentation illustrates the role of music and wellness within the Lowrey Magic Organ Course. A live class is presented for participants to observe, and a question and answer period is provided.

Contact: Karl Bruhn, 628 S. Vicki Lane, Anaheim, CA 92804-3207

S
E
S
S
I
O
N
S
C
H
E
D
U
L
E

Friday

9:45 am - 11:45 am
C207

Level: Entry

Music Therapy for Children Recovering from Burns

Presenter(s): Christine M. Tuden, MS, MT-BC

Music therapy in burn care is developing as a complimentary treatment in the recovery process. Through slides, case examples, and experimental techniques, participants learn the role of music therapy during the three stages of pediatric burn recovery: acute injury, rehabilitation, and plastic surgical reconstruction.

Contact: Christine M. Tuden, MS, MT-BC,
4400 Avenue N Apt 57, Galveston, TX
77550-6587

9:45 am - 11:45 am
C214

Reimbursement Basics: What Every Music Therapist Should Know

Presenter(s): Roy Kennedy, MT-BC; Judy Simpson, MT-BC

Following a review of related terminology and current coding systems, participants will learn procedural steps necessary when seeking reimbursement for music therapy services. Sample forms and letters, along with suggestions for marketing and development material preparation will be provided.

Contact: Judy Simpson, MT-BC, 8455
Colesville Road, Suite #1000, Silver
Spring, MD 20910

9:45 am - 11:45 am
C102

Level: Professional

Starting a Private Practice: A "How To"

Presenter(s): Lillieth Grand, MS, MT-BC
Presenter: Brandi Jo Carson, MT-BC

This session describes what it takes to develop and run a private practice. Some of the items covered include: time management, income, benefits, downfalls, good brochures and business cards, fee schedules, negotiations, business materials, billing, and specialization. The presenter speaks openly about both her successes and her failures.

Contact: Lillieth Grand, MS, MT-BC, 1605-
A Coriander Dr, Costa Mesa, CA 92626

9:45 am - 11:45 am
C106

Taiko!

Presenter(s): Iris M. Shiraishi, PhD, MT-BC

Presenter: Amy Greenwald Furman, MM,
RMT

Taiko (Japanese for "fat drum") is used in many types of traditional Japanese music. Kumi daiko or taiko ensemble playing is a recent phenomenon and has grown in popularity in Japan and North America. This workshop will present a brief history and provide an introduction to taiko drumming techniques.

Contact: Iris M. Shiraishi, PhD, MT-BC,
1860 Princeton Avenue, St Paul, MN
55105-1521

9:45 am - 11:45 am
C107

The Harmony Project: Establishing a Program to Address the Impact of Gun Violence in Our Schools

Presenter(s): Members of the San Diego Music Therapy Association

Presenter: Carmen F. Steele, MT-BC

Learn how local music therapists, in the aftermath of a deadly shooting last Spring, organized, approached authorities, planned, and implemented a music therapy-based forum for teens to explore and express the causes, reactions, and possible solutions to campus violence.

Contact: Michelle Sanford, MT-BC, 3444
Del Rey St., San Diego, CA 92109

9:45 am - 11:45 am
C201-202

Level: Professional

Why Music Therapy? A Success Story of Convincing Our Administration

Presenter(s): Terri L. Cooper, MT-BC; Regina P. Wheeler, MT-BC

We all experienced difficulty proving music therapy is a viable therapy. We are asked: Why music therapy? Why assess? Why document? Why do we need an MT-BC instead of a musician? The presenters share successful strategies and examples that enabled them to officially start a viable music therapy program.

Contact: Regina P. Wheeler, MT-BC, 1994
290th Street, Garner, IA 50438

11:45 am - 1:30 pm

EXHIBIT HALL

Exhibit Spectacular

12:00 pm - 1:15 pm
C103

Meet the Executive Board

Come by during your lunch break to meet members of the AMTA Executive Board. The Board will be in Room 103 and look forward to meeting members.

12:00 pm - 1:15 pm
C105

Affiliate Relations Committee

12:00 pm - 1:15 pm
C206

Continuing Education Committee

12:00 pm - 1:15 pm
C205

Employment/Public Relations Committee

12:00 pm - 1:15 pm
C208

Ethics Board

12:00 pm - 1:15 pm
C214

International Relations Committee

12:00 pm - 1:15 pm
C207

Journal of Music Therapy Editorial Board

12:00 pm - 1:15 pm
C104

Judicial Review Board

12:00 pm - 1:15 pm
C212

Professional Advocacy Committee

12:00 pm - 1:15 pm
C209-210

Reimbursement Task Force

12:00 pm - 1:15 pm
C102

Standards/Special Target Populations Committee

12:00 pm - 2:00 pm
CONFERENCE CENTER

Cash Lunch

1:00 pm - 5:00 pm
CONFERENCE CENTER

Registration Open

Friday

1:30 pm - 2:30 pm
C211

Educator's Forum (con't): University-Affiliated Internships: Several Approaches Used at Arizona State University

Presenter(s): Barbara J. Crowe, MM, MT-BC;
Robin E. Rio, MA, MT-BC
Presenter: David S. Smith, PhD, MT-BC

Arizona State University has used a number of approaches in implementing university-affiliated internship opportunities. These include shared supervision in partnership with music therapists in facilities, faculty supervision of internships, and internships with music therapists in private practice. Models for each approach will be presented.

Contact: David S. Smith, PhD, MT-BC,
Western Michigan University, School of
Music, Kalamazoo, MI 49008-3831

1:30 pm - 3:30 pm
C102

Level: Professional, Entry, Student
Kid Caboodle: Music, Visuals, and Language Materials Used to Create Successful Music Therapy Sessions

Presenter(s): Julie Bruggenkamp; Amber S.
Weldon-Stephens, EdS, MT-BC
Presenter: Sandra L. Curtis, PhD, MT-BC

This presentation explores the use of original music as a teaching tool, and introduces three collections of original music, visuals, session plans, and more. The materials used can be adapted for students with moderate, severe, and profound intellectual disabilities, autism, speech and language disorder, early intervention, and orthopedic impairments.

Contact: Amber S. Weldon-Stephens,
EdS, MT-BC, 1842 Condor Drive, Marietta,
GA 30066

1:30 pm - 3:30 pm
C106

Level: Professional
Classical Music, Rock and Gospel Improvisation Techniques: Application with Persons in Forensic Settings

Presenter(s): Jooyeon Hong, MA; Karen E.
Johnson, MT-BC; Vaughn A. Kaser, MCAT,
MT-BC; Karen J. Reed, MA, RMT
Presenter: Albert Ikeda, RMT

This experiential session presents music therapy techniques applied with forensic psychiatric clients—including mentally disordered offenders and sexually violent predators at Atascadero State Hospital in California. The presenter demonstrates techniques for rock improvisation, gospel

improvisation, and the use of classical music.

Contact: Karen J. Reed, MA, RMT, 924
Patria Circle, Atascadero, CA 93422-6893

1:30 pm - 3:30 pm
C104

Level: Entry
Creating an Integrative Music Therapy Program in a General Hospital

Presenter(s): Ruth E. Noonan, MT-BC; Willow
Pearson, MA, MT-BC
Presenter: Laurie G. Rugenstein, MMT, LPC,
MT-BC

Two music psychotherapists share their respective experiences creating a music therapy program in a community hospital. Each describes the interconnected context, process, and content which support the establishment of music therapy in the acute care setting. Business model development; therapeutic assessment, goals, and interventions; and treatment team collaboration are discussed.

Contact: Willow Pearson, MA, MT-BC, 957
Grant Place, Boulder, CO 80302

1:30 pm - 3:30 pm
C208

Level: Entry
Creative Approaches to Music Therapy: Using the Orff-Schulwerk Process as a Multi-Sensory Experience

Presenter(s): Kristin W. Batzner, MT-BC;
Cynthia M. Colwell, PhD, MT-BC
Presenter: Alice-Ann Darrow, PhD, RMT

The Orff process provides a multi-sensory experience adaptable to clients' ages and abilities. Participants will experience various aspects of the process (i.e., imitation), use materials (i.e., pitched percussion) common to this approach and develop an understanding of theoretical aspects (i.e., orchestration techniques) and how they adapt to music therapy.

Contact: Cynthia M. Colwell, PhD, MT-BC,
2125 Quayle Creek Dr., Lawrence, KS
66047



1:30 pm - 3:30 pm
C209-210

Planting Seeds: How to Reach Future Music Therapists through Career Presentations

Presenter(s): Nellie Doty, MT-BC; Betsey King
Brunk, MMT, MT-BC; Ellen Rayfield,
MT-BC; Anna Gonzales Berezin, MS, OTR/
L, MT-BC; Dirk Cushenbery, MME, MT-BC;
Michele Erich, MM, MT-BC; Lisa Kynvi, MA,
MT-BC; Dan Leopold, MT-BC; Laurie
Rugenstein, MMT, LPC, MT-BC

Educators and music therapists living in areas with few colleagues will be interested in this presentation which will feature ideas for a variety of ways to reach high school students who might enter the field. Examples of handouts, visual aids, speech outlines will be provided.

Contact: Betsey Brunk, MMT, MT-BC,
Southern Methodist University, Dept. of
Music Therapy/Div. of Music, Dallas, TX
75275

1:30 pm - 3:30 pm
C107

Level: Professional
Effective Music Therapy Presentations: Negotiation, Design, and Delivery

Presenter(s): Alicia A. Clair, PhD, MT-BC; Sheri
L. Robb, PhD, MT-BC

This session outlines techniques and strategies that enable participants to develop dynamic and effective presentations. Session participants learn the fine art of negotiating a contractual agreement for professional presentations, how to develop a concept outline from clinical practice, as well as strategies and techniques for effective delivery.

Contact: Sheri L. Robb, PhD, MT-BC, 5005
W. 73rd Street, Prairie Village, KS 66208

1:30 pm - 3:30 pm
C212

Level: Professional
Going Home: A Journey with Persons in End-Stage Dementia

Presenter(s): Natalie McClune, MT-BC; Tria
Thompson, MA, Rel Ed, ADTR
Presenter: Michelle Wigder

As persons with dementia reach the final days of their journey, how can we continue to interact with them in a therapeutic manner? The M.A.T. Table process employs techniques that allow persons with dementia to continue to release a wide range of emotions as they prepare to leave this world.

Contact: Natalie McClune, MT-BC, 5809 S.
Winds Dr Apt 106, Mentor-on-the-Lake,
OH 44060

Friday

1:30 pm - 3:30 pm

C204

Level: Professional, Entry, Student

Guitar Works - Discovering Modes and Their Place in Our Music

Presenter(s): Kimberly Khare, MA, CMT, NRMT

Prsider: Lorrie Kubicek, MT-BC

This workshop will provide hands-on tools to integrate the use of Modes into our clinical guitar work. By exploring the nature of the guitar, we will come to learn how to capture the essence of Modes through chord progressions and our voice. Attendees are asked to bring their own guitar and a pick. Please come with your guitar tuned.

Contact: Kimberly Khare, MA, CMT, NRMT, 1 Lexington Ave., #3, Somerville, MA 02144

1:30 pm - 3:30 pm

C201-202

How to Make Sesame Street Music Works Work for You

Presenter(s): Joanne Livesey

This workshop will introduce you to Sesame Street Music Works, a new public service initiative from Sesame Workshop, creators of Sesame Street. Music Works uses the power and appeal of the Muppets to convey messages about the importance of music and music making in the development of young children. All participants will receive free Music Works video/print kits.

Contact: Joanne Livesey, 1 Lincoln Plaza, New York, NY 10023

1:30 pm - 3:30 pm

C206

Level: Professional, Entry, Student

Music Therapy and Physical Therapy: Collaborations for Success

Presenter(s): Kate Davis, PT; Jill Olson, MT-BC

Prsider: Alicia A. Clair, PhD, MT-BC

This session explores the benefits and effectiveness of combining physical therapy and music therapy as a co-treatment model in school and ICF-MR settings. Video excerpts and hands-on treatment techniques are provided, and areas of focus include range of motion and postural movement to music.

Contact: Jill Olson, MT-BC, 9532 Shoshone Rd., NE, Albuquerque, NM 87111

1:30 pm - 3:30 pm

C205

Level: Entry

Successful Job Hunting Strategies for Music Therapists

Presenter(s): Terri L. Cooper, MT-BC

Prsider: Regina P. Wheeler, MT-BC

How do we get a job without the experience employers require? This presentation teaches students and entry level music therapists how to get their first job, from an administrator's perspective. Topics include: job hunting strategies, applications, resumes, cover letters, interview techniques, and professionalism.

Contact: Terri L. Cooper, MT-BC, P. O. Box V, Clear Lake, IA 50428

1:30 pm - 3:30 pm

C214

Level: Professional, Entry, Student

You're Doing Music Therapy?

Presenter(s): Ginni M. Balch, MT-BC; Melanie F. Chavin, MS, MT-BC; Susan M. Knechtel, MT-BC; Julia Carlile Long, MT-BC; Michelle L. Maples Reyes, ADC, MT-BC; Kelley J. Pujol, MEd, MM, MT-BC; Terri D. Smith-Morse, MT-BC; Cheryl S. Stephenson, MM, MT-BC

Misrepresentations of music therapy are becoming more widespread. This workshop by the AMTA Professional Advocacy Committee assists clinicians in developing responses to various occurrences of misrepresentation. Participants have time to discuss situations they have encountered, and to develop responses to these. Participants receive handouts with materials for responding to misrepresentation.

Contact: Cheryl S. Stephenson, MM, MT-BC, 102 Prince Road, Greenville, NC 27858

2:30 pm - 3:30 pm

C211

Level: Professional

Educator's Forum (con't): Ideas for Implementing Curriculum and Internship Revision to Meet New Commission Guidelines

Presenter(s): Lee Anna Rasar, MME, MT-BC

Prsider: David S. Smith, PhD, MT-BC

This presentation will offer suggestions to college educators on how to implement curricular change related to the Commission Report. The use of directed studies courses and grants to assist with new course development will be presented. Ways to sell internship course

changes to curriculum committees will also be presented.

Contact: Lee Anna Rasar, MME, MT-BC, 2621 Winsor Dr., Eau Claire, WI 54703-1778

3:30 pm - 5:00 pm

EXHIBIT HALL

Exhibits

3:45 pm - 4:45 pm

C104

Level: Entry

A Song for You - Integration of Children with Autism in Childcare Classes

Presenter(s): Petra Kern, Dipl. Sozpaed, MT-BVM, MT-BC

Prsider: Douglas R. Keith, MT-BC

This session describes a project that integrates young children with autism in childcare. It focuses on a study involving individualized songs to promote smooth daily transitions into classrooms for children with autism. The collaborative strategies used to implement the techniques are also discussed.

Contact: Petra Kern, Dipl. Sozpaed, MT-BVM, MT-BC, 302 St Thomas Dr., Chapel Hill, NC 27514

3:45 pm - 4:45 pm

C201-202

Auditory Stimulation and Alternative Sounds in Music Therapy

Presenter(s): Erica Rondina, MA; Frank Wagner, MA, CMT

The focus of the presentation is on the use of non-traditional and alternative sounds in music therapy. The piano, guitar, and voice, are traditionally used in most music therapy settings. Flute, clarinet, trumpet, acoustic bass, cello, and violin are just some of the non-traditional instruments that can be used. Suggestions for the applications of these instruments in clinical settings will be discussed. Using these non-traditional sounds in music therapy will not only benefit the client and expand the space for growth and enrichment in their lives, but allow the music therapist a wider variety of tools in the clinical treatment process

Contact: Frank Wagner, MA, CMT, 315-17 W. 98th St. Apt. 8BF, New York, NY 10025



Friday

3:45 pm - 4:45 pm
C212

Level: Professional, Entry, Student
Designing Computer Presentations for Conferences, Workshops, and the Classroom

Presenter(s): Gene Ann Behrens, PhD, MT-BC
Prsident: Sr. Donna Marie Beck, PhD, FAMI, MT-BC

Creating professional presentations for conferences, workshops, or the classroom is easy using a computer and PowerPoint, a software program. This session teaches the skills necessary for creating computer, 35mm slide, or overhead presentations or teaching materials. Detailed handouts are provided, and participants should bring laptops with PowerPoint, if available.

Contact: Gene Ann Behrens, PhD, MT-BC,
4014 Parkside Ct, Mt Joy, PA 17552

3:45 pm - 4:45 pm
C211

Educator's Forum (con't): Implementation of the AMTA Standards: The Task Force Report

Presenter(s): Kenneth Bruscia, PhD, MT-BC; Jane P. Creagan, MME, MT-BC; Leslie L. Hunter, MME, MT-BC; Mavis N. Mahlberg, MA, MT-BC; Cathy McKinney, PhD, MT-BC; Marilyn I. Sandness, MM, MT-BC; David S. Smith, PhD, MT-BC; Linda M. Wright-Bower, MS, MT-BC

Prsident: David S. Smith, PhD, MT-BC

The Implementation Task Force was charged with developing procedures to implement the new AMTA Standards for Education and Clinical Training. Music Therapy Educators and Clinical Trainers have received mailings with documents the Task Force has developed periodically throughout the last nine months. Task Force members will discuss the documents, as well as other work that has been accomplished in relation to the charge during a panel presentation which is open to Music Therapy Educators, Clinical Trainers, and anyone else who is interested in this important aspect of our association.

Contact: David S. Smith, PhD, MT-BC,
Western Michigan University, School of Music, Kalamazoo, MI 49008-3831



Information Subject to Change

3:45 pm - 4:45 pm
C207

Level: Professional, Entry
Finding Your Voice: The Use of Musical Theatre Storytelling to Treat Adolescent Girls with Learning Disabilities and Psychiatric Disorders

Presenter(s): Kathryn Brosseau, MT-BC; Heather Lanry, MT-BC; Ted Rubenstein, MFA, MA, Psy.D; Victoria A. Storm, MT-BC
Prsident: Ellen B. Rayfield, MT-BC

This presentation outlines a treatment protocol that integrates storytelling, lyric analysis, songwriting, and drama therapy for treating adolescent girls with co morbid diagnoses of learning disabilities and psychiatric disorders. This cognitive-behavioral approach addresses sequencing, attention, cognitive flexibility, behavioral rehearsal, socialization, and academic performance.

Contact: Kathryn Brosseau, MT-BC, 6760 N. Sheridan Rd. Apt. #3E, Chicago, IL 60626

3:45 pm - 4:45 pm
C105

Level: Entry
I Feel Vulnerable and I Feel Strong: Women's Relationships with their Singing Voices

Presenter(s): Lisa Kynvi, MA, MT-BC
Prsident: Caryl-Beth Thomas, MA, ACMT

This session explores the relationship women have with their singing voices. For this research project, ten women were interviewed in-depth, the interview material was analyzed phenomenologically, and five major themes emerged from the data analysis. These themes, as well as their implications for the field of music therapy, are discussed.

Contact: Lisa Kynvi, MA, MT-BC, 209 Mechanic St., Marlborough, MA 01752

3:45 pm - 4:45 pm
C209-210

Level: Entry
Music for the Soul: Music Therapy Techniques for Battered Women and Children

Presenter(s): Dena Register, MM, MT-BC; Darcy Walworth, MM, MT-BC; Jennifer Whipple, MM, MT-BC
Prsident: Russell E. Hilliard, MSW, MT-BC

Domestic violence is the leading cause of injury to women, causing long-lasting physical and emotional damage to women and children. This session addresses the needs of clients residing in domestic violence shelters, potential goals and

objectives, challenges involved in planning, and effective techniques for both separate and joint sessions.

Contact: Jennifer Whipple, MM, MT-BC,
3961 Gaffney Loop, Tallahassee, FL 32303-1216

3:45 pm - 4:45 pm
C206

Level: Entry, Student
Music Therapists as Highly Effective People

Presenter(s): Lalene D. Kay, MM, MT-BC, ACC

Covey's 1989 bestseller *Seven Habits of Highly Effective People* has continued to be a pervasive influence in business training programs worldwide. In this presentation, participants learn how these principles of effective professional behavior can be interpreted and applied for music therapists in clinical work, and used in marketing music therapy.

Contact: Lalene D. Kay, MM, MT-BC, ACC,
331 Fair Street, Berea, OH 44017-2307

3:45 pm - 4:45 pm
C102

Music Therapy as Essential Influence in the Health Spa Industry for Preventive and Behavioral Medicine

Presenter(s): Lisa Sklover-Filgate, PhD, CMT
Prsident: Joseph Nagler, DA, CMT

~~CANCELLED~~
This session describes music therapy in the behavioral health department of a spa focused on preventative medicine, spiritual awareness, exercise psychology, stress management, behavioral change and counseling in bereavement, lifestyle change and health crisis. Music therapy has made a huge impact on the quality of work in short-term counseling.

Contact: Lisa Sklover-Filgate, PhD, CMT,
7 Cross Road, Brookfield, CT 06804

3:45 pm - 4:45 pm
C106

Level: Student
SAAB Student Session: Keeping the Music Therapy Magic

Presenter(s): Jo Ellyn Berky Beck, PhD, MT-BC, Stephanie Shepard, Thomas Hobson, Barbara Martinez, Erin Salez, Virginia Darnell, Jennifer Young

This session will be an opportunity for discussion and sharing of ways students keep energized and enthused about music therapy during the school year. Participants are asked to share examples of activities and fund-raising ideas.

Contact: Jo Ellyn Berky Beck, PhD, MT-BC,
545 Pewter Dr., Exton, PA 19341

Friday, Saturday

3:45 pm - 4:45 pm
C107

Level: Professional, Entry

**The Research Committee Presents:
Historical Research Group**

Presenter(s): William B. Davis, PhD, RMT

Ira Altshuler was a powerful influence on the way music therapy was practiced for almost four decades. This presentation will focus on his professional and personal life, clients and many contributions to music therapy.

Contact: William B. Davis, PhD, RMT,
5405 Taylor Lane, Fort Collins, CO 80525

3:45 pm - 4:45 pm
C214

Level: Entry

**Use of Creative Movement and Structured
Dance for Adults with Special Needs**

Presenter(s): Regina P. Wheeler, MT-BC

This presentation offers suggestions on integrating creative and structured dance for adults with special needs. The presenter shares successful strategies and techniques they have used, and discuss community involvement, instructional methods, wheel chair inclusion, motivation, specific individual needs, adaptations, and successful teaching techniques. Visual aids and handouts are included.

Contact: Regina P. Wheeler, MT-BC, 1994
290th Street, Garner, IA 50438

3:45 pm - 4:45 pm
C204

**Voices: A World Forum for Music Therapy -
A New International Electronic Journal**

Presenter(s): Carolyn Kenny, PhD, RMT/CMT;
Barbara L. Wheeler, PhD, MT-BC

Prsider: Michele Forinash, DA, LMHC,
MT-BC

This presentation and interactive workshop is designed to introduce music therapists to a new free International Electronic Journal. The purpose of the journal is to encourage a dialog between the established Western music therapists and researchers and those in developing countries. Eight editors representing different continents work together to encourage publication and online dialog.

Contact: Barbara L. Wheeler, PhD, MT-BC,
10529 Black Iron Road, Louisville, KY
40291

3:45 pm - 4:45 pm
C205

Level: Professional, Entry, Student

**Whole Language Applications in Music
Therapy for Young Children**

Presenter(s): Brandi Jo Carson, MT-BC; Lillieth
Grand, MS, MT-BC

Prsider: Deborah Lee

This experiential presentation provides examples of the Whole Language approach, with participants playing the roles of students experiencing sung books, puppet stories, and more. The presenters also define the educational philosophy of Whole Language, and provide an annotated bibliography of many books which they have found valuable in their work.

Contact: Lillieth Grand, MS, MT-BC, 1605-
A Coriander Dr, Costa Mesa, CA 92626

3:45 pm - 4:45 pm
C208

Level: Professional, Entry, Student

**With a Little Help From My Friends: Using
Rock and Roll Music in Music Therapy for
Adolescents**

Presenter(s): Mary Ann Janosik, PhD

This interactive session will explore some of the ways adolescents hear and respond to rock and roll music, and how different styles of rock and roll can be used in music therapy. Some attention to musical expressions via MTV and film will also be examined. Participants will have the opportunity to develop ways to utilize a range of popular music styles (songs and lyrics), and genres (folk, new wave, heavy metal, rap) in music therapy sessions.

Contact: Mary Ann Janosik, PhD, Rock and
Roll Hall of Fame, 1 Key Plaza, Cleveland,
OH 44114

5:00 pm - 6:30 pm
EXHIBIT HALL THEATRE

**AMTA Business Meeting - State of the
Association Address**

5:00 pm - 7:30 pm
C107

AMTAS Business Meeting

Followed by student get-together hosted
by the Western Region AMTAS

7:30 pm - 9:00 pm

MISHIMA PLAZA AMPITHEATRE
Drum Circle

10:00 pm - 2:00 am
SHERATON - COLORADO

Jam Room

Saturday, October 27

6:30 am - 8:30 am
CONFERENCE CENTER

Cash Breakfast

7:00 am - 8:00 am

Networking Breakfasts

Developmentally Disabled
Disaster Relief
Early Childhood
Forensics/Corrections
Geriatrics
General Medical
International Relations
Mental Health
Music Therapy Education
Rehabilitation
Self Employment
Special Education
Substance Abuse

7:00 am - 11:30 am
CONFERENCE CENTER

Registration Open

8:00 am - 9:15 am
C207

Regional Meeting - Western

8:00 am - 9:15 am
C212

**Regional Meeting -
Southwestern**

8:00 am - 9:15 am
C209-210

**Regional Meeting -
South Central**

8:00 am - 9:15 am
C104

**Regional Meeting -
Southeastern**

8:00 am - 9:15 am
C105

Regional Meeting - Midwestern

8:00 am - 9:15 am
C106

Regional Meeting - Mid-Atlantic

8:00 am - 9:15 am
C107

Regional Meeting - Great Lakes



Saturday



8:00 am - 9:15 am
C102

Regional Meeting - New England

9:00 am - 10:30 am
C211

Public Relations Session

9:00 am - 4:00 pm
EXHIBIT HALL
Exhibits

9:30 am - 10:30 am
C102

Level: Professional

Changing Views for Changing Times: Views of Music Therapists in the Workplace

Presenter(s): Chesley O. Sigmon, EdD, MT-BC
Prsident: Sandra L. Curtis, PhD, MT-BC

Recently we have observed substantial changes to many work environments, changes which affect how music therapists do their jobs, feel about their jobs, and enjoy their career choices. This presentation discusses the results of a national survey; participants may also take the survey to assess the impact on their lives.

Contact: Chesley O. Sigmon, EdD, MT-BC,
2018 Robin Circle, Milledgeville, GA
31061

9:30 am - 10:30 am
C104

Level: Entry

Documenting Effects of Single Music Therapy Sessions with Persons in Hospice: Creative Accountability

Presenter(s): Robert Krout, EdD, MT-BC
Prsident: Craig A. Midgett, MT-BC

This session details documentation techniques for evaluating the effectiveness of single sessions in facilitating end of life pain control, physical comfort, and relaxation. Results of a clinical project to quantify the effectiveness of such interventions with 80 clients is shared, data collection forms are distributed, and transfer applications are discussed.

Contact: Robert Krout, EdD, MT-BC, 4800
N Flagler Drive, Apt 2, West Palm Beach,
FL 33407

9:30 am - 10:30 am
C105

Level: Entry

Ethical Issues in Researching Music and Deafness: Implications for Music Therapy

Presenter(s): Ana Lucia de C. Cruz, PhD
Prsident: Joseph Moreno, MA, MME,
MT-BC

Researchers face several ethical dilemmas when investigating an individual's lifeworld (i.e., issues of privacy and confidentiality; degree of personal interaction; and gender, racial, and cultural differences). Research on music and deafness, specifically, must deal with cultural issues of power between a normally hearing and a deaf individual.

Contact: Ana Lucia de C. Cruz, PhD, St.
Louis Comm. College - Meramec, 11333
Big Bend Blvd., St. Louis, MO 63122

9:30 am - 10:30 am
C107

From Russia with Love: A Music Therapist's Report on an Interdisciplinary Cultural Exchange

Presenter(s): Ronna K. Davis, MA, MT-BC
Prsident: Michelle Lazar, MT-BC

This presenter, a music therapist from Cleveland, OH, will describe her recent odyssey to St. Petersburg, Russia with a special educator and family retreat educator. Details of the professional training seminar along with a comparison of the Russian and American systems of music education for children with disabilities will be discussed.

Contact: Ronna K. Davis, MA, MT-BC,
22450 Douglas Road, Shaker Heights, OH
44122-2059

9:30 am - 10:30 am
C209-210

Level: Professional, Entry, Student

Music and Memory-Related Disorders

Presenter(s): Lee Anna Rasar, MME, MT-BC
Prsident: Dale B. Taylor, PhD, MT-BC

Music is a beneficial and therapeutic treatment modality for assessing, measuring, stimulating, and preserving memory processes for people with memory-related disorders. This session reviews the literature in the field of music and memory-related disorders, including the theories, models, methodologies, procedures, and the use of music as an assessment tool.

Contact: Lee Anna Rasar, MME, MT-BC,
2621 Winsor Drive, Eau Claire, WI 54703-
1778

9:30 am - 10:30 am
C201-202

Level: Professional, Entry, Student

Music Therapy in the Treatment of Children with Rett Syndrome

Presenter(s): Kathryn Brosseau, MT-BC,
Victoria A. Storm, MT-BC
Prsident: Heather Lantry, MT-BC

People with Rett Syndrome are highly responsive to music therapy. This presentation includes an overview of Rett Syndrome and the music therapy research, implications for treatment, and strategies for intervention. Case examples illustrate concepts, and a challenge for future research is made.

Contact: Victoria A. Storm, MT-BC, 5003
W Cullom Ave. #2, Chicago, IL 60641-
1456

9:30 am - 10:30 am
C206

Level: Professional, Entry, Student

Musical Preferences of Japanese Elderly Persons with and without Dementia

Presenter(s): Fumio Kuribayashi, PhD, MT-BC
Prsident: Gene Ann Behrens, PhD, MT-BC

This presentation examines research on the effect of diatonic and pentatonic music on elderly clients' responses to music therapy activities. The presenter's pilot study, conducted last year, indicated that clients with dementia showed more active responses to pentatonic music, whereas clients unaffected by dementia did not exhibit a preference.

Contact: Fumio Kuribayashi, PhD, MT-BC,
1-6-3-1-104 Aino Sato, Kita-ku, Sapporo,
Hokkaido 002-8071, JAPAN 002

9:30 am - 10:30 am
C207

Level: Entry

Now I Live Again: Music Therapy Services for Post-Heart Transplant Outpatients

Presenter(s): Jennifer Whipple, MM, MT-BC
Prsident: Dale Copans-Astrand, MT-BC

Following heart transplantation, patients return to the hospital for frequent outpatient procedures. Music therapy services provided during these outpatient visits may address many different goals and objectives. This presentation provides an overview of important medical issues and terminology related to heart transplantation, case study examples, and session ideas.

Contact: Jennifer Whipple, MM, MT-BC,
3961 Gaffney Loop, Tallahassee, FL 32303-
1216

Saturday

SESSIONS SCHEDULE

9:30 am - 10:30 am
C208

Level: Entry

Peer Supervision in the Development of the New Professional

Presenter(s): Michael D. Bertolami, MA, MT-BC; Mary-Carla MacDonald, MA, MT-BC

Presenter: Michele Forinash, DA, LMHC, MT-BC

This session provides an in-depth exploration of the presenters' experience with peer supervision. The presenters define a theoretical model of peer supervision and highlight both the potential benefits of peer supervision and various ways of incorporating the arts into the process. Practicalities of constructing a group are also presented.

Contact: Michael D. Bertolami, MA, MT-BC, 146 Washington Ave, W Newton, MA 02465

9:30 am - 10:30 am
C212

Level: Entry

Preschoolers with Cochlear Implants: Learn to Listen and Listen to Learn

Presenter(s): Mary E. Boyle, EdD, MT-BC; Sr. Mariam Pfeifer, MA, MT-BC

Presenter: Sr. Donna Marie Beck, PhD, FAMI, MT-BC

This presentation describes the hands-on experience of a collaborative project between music therapists, speech pathologists, and teachers of the hearing impaired for preschoolers with cochlear implants. The session focuses on techniques, which have been found useful or problematic for developing communication skills with children in an inclusive class setting.

Contact: Sr. Mariam Pfeifer, MA, MT-BC, 2300 Adams Avenue, Scranton, PA 18509

9:30 am - 10:30 am
C214

Level: Entry

The Use of Music Therapy in Pain Management

Presenter(s): Katie Bond, RN; Tracy A. Leonard-Warner, MT-BC

Presenter: Laura K. Walters, MT-BC

This presentation defines pain, discusses the under-treatment of pain, introduces theories regarding the pathophysiology of pain, and identifies the components of a pain assessment. The presentation also examines and demonstrates the use of music therapy as a non-pharmacological

intervention for pain, and reviews the research on music therapy and pain.

Contact: Tracy A. Leonard-Warner, MT-BC, 6704 N 10th Place, Phoenix, AZ 85014

9:30 am - 11:30 am
SHERATON - CORDOVA

AMTA Executive Board Meeting

10:45 am - 12:15 pm
C209-210

Level: Professional

Bringing Lives to Closure

Presenter(s): Marian D. Palmer, ACC, RMT
Presenter: Louise E. Lynch, MA, MT-BC

This workshop is for those who want to assist their clients or loved ones with bringing life to closure with dignity. Participants are introduced to specific techniques designed to facilitate meaningful interaction, and to techniques that assist in dealing effectively with the many losses that occur during our lives.

Contact: Marian D. Palmer, ACC, RMT, 340 Holly Hill Road, Oldsmar, FL 34677

10:45 am - 12:15 pm
C205

Level: Entry

Developing a Guitar-Based Approach in Nordoff-Robbins Music Therapy

Presenter(s): Rick Soshensky, MA, CMT
Presenter: Frank Wagner, MA, CMT

This workshop explores contemporary guitar styles in the context of this historically piano-based approach. Attendees examine the basic tenets of Nordoff-Robbins music therapy, analyze Paul Nordoff's piano techniques, and view videotape of guitar-based sessions, considering an approach that is unique to guitar, relevant to Nordoff-Robbins music therapy, and clinically effective.

Contact: Rick Soshensky, MA, CMT, 2524 Radcliff Ave., Ground Floor, Bronx, NY 10469

10:45 am - 12:15 pm
C207

Effective Documentation of Music Therapy Outcomes

Presenter(s): Richard W. Scalenghe, MT-BC

This session will review the essentials of music therapy documentation. Components of a professional music therapy assessment will be reviewed. Guidelines for writing goals and objectives based on the assessment will be presented. Participants will be provided with opportunities to practice writing

goals and objectives based on actual music therapy cases using an impairment model.

Contact: Richard Scalenghe, MT-BC, 208 Griffen St., Phoenixville, PA 19460

10:45 am - 12:15 pm
C208

Level: Entry

Group Percussion Experiences as an Intervention for Gang Involvement: Music Therapy in Schools

Presenter(s): Barbara J. Crowe, MM, MT-BC; Joel M. de la Houssaye, MT-BC
Presenter: Christine Stevens, MT-BC

This presentation addresses a public school music therapy program for children at-risk for gang involvement. Group percussion experiences, world music experiences, and a variety of other creative art experiences were used. The session includes videotape discussing the problems encountered establishing a music therapy program in an educational setting.

Contact: Barbara J. Crowe, MM, MT-BC, Arizona State University, School of Music Box 870405, Tempe, AZ 85287-0405

10:45 am - 12:15 pm
C104

Level: Professional

Growing with Computer Technology: Computerized Databases and Music Therapy Data

Presenter(s): Carol A. Achey, MT-BC
Presenter: Lori Lundeen Smith, MT-BC

This session discusses the benefits of a computerized database, and presents the results from two studies utilizing computerized databases. Participants are shown examples of databases, given a tutorial in creating individualized databases, and are shown how to export data into programs such as Word and Excel.

10:45 am - 12:15 pm
C201-202

Level: Entry

Is Rap Therapeutic? The Use of Rap for Adolescents with Severe Emotional Disturbances

Presenter(s): Amy M. Donnenwerth, MA, MT-BC

Presenter: Steven B. Barrett, MT-BC

Connecting with severely emotionally disturbed adolescents through their music is a creative way to address their clinical issues, and rap is a form of expression especially popular with teenagers. This presentation covers the use of rap, through song interpretation techniques,

Saturday

and describes how it meets the needs of these clients.

Contact: Amy M. Donnenwerth, MA, MT-BC, 2442 Loma Vista St, Pasadena, CA 91104-3403

10:45 am - 12:15 pm
C214

Level: Professional, Entry

Music Industry Forum 2001

Presenter(s): Greta E. Gillmeister, MT-BC; Kirsten Nelson, Mt-BC; Julie Romeo; Mel Wisniewski; Tamara W. Zavislan, MMGT, MT-BC

The music products industry has long been a supporter of music therapy. In the last five years, retailers and manufacturers across have recognized the added value of music therapists on staff as consultants, instructors, specialists, and the country. The retail setting offers a dynamic employment opportunity for music therapists. Meet the industry leaders and music therapists that have created positive career opportunities in this non-traditional setting. Learn about the business and therapeutic skills, knowledge, and expectations needed to succeed, and how to get started.

Contact: Tamara W. Zavislan, MMGT, MT-BC, 8455 Colesville Road, Suite #1000, Silver Spring, MD 20910

10:45 am - 12:15 pm
C212

Level: Entry

Music Therapy as Integrative Therapy in Oncology

Presenter(s): Suzanne B. Hanser, EdD, MT-BC
Prsident: Kathleen M. Howland, PhD, MT-BC

This presentation details the establishment of the Music Therapy Service at the new Leonard Zakim Center for Integrated Therapies at the Dana-Farber Cancer Institute in Boston. The challenges and practicalities of setting up a new clinical program are presented, including proposals, assessments, integration into existing programs, and charting new ground.

Contact: Suzanne B. Hanser, EdD, MT-BC, 589 Saw Mill Brook Parkway, Newton Centre, MA 02459

10:45 am - 12:15 pm
C105

Level: Professional, Entry

Parallel Themes in Musical Development of Children With and Without Disabilities

Presenter(s): Sylvia Stultz, PhD; Barbara L. Wheeler, PhD, MT-BC

Prsident: Sean A. Lane, MT-BC

This presentation focuses on developmental levels in children with and without disabilities, examining within a musical context the skills and behavior of both a typically developing girl and children with severe and profound multiple disabilities. The presentation discusses common themes, theories of childhood development, and the development of children with disabilities.

Contact: Barbara L. Wheeler, PhD, MT-BC, 10529 Black Iron Road, Louisville, KY 40291

10:45 am - 12:15 pm
C206

The Braddock Body Process

Presenter(s): Carolyn Braddock, MA

Prsident: Ronald M. Borczon, MM, MT-BC

The focus of this workshop is on three types of patterns that trauma survivors have developed as a result of the experience of trauma. These are rigid, collapsed and inanimate, each with their own breath, sound and movement patterns. Eight guided learning sessions will be introduced, using movement and music as a central point of the interventions. Participants will explore ways to find the rhythm of the body, unwinding the trauma. The body is innately musical, and using easy movements with breath and music, the body can become sensitive to the music within. This allows new patterns to develop.

Contact: Carolyn Braddock, MA, P.O. Box 2601213, Lakewood, CO 80226

10:45 am - 12:15 pm
C204

Level: Entry

The Next Step: Treating Alcoholism with Programme Movie Music Psychotherapy

Presenter(s): James A. Dziwak, MFT, MT-BC

Programme Movie Music Psychotherapy (PMMP) can enable clients to evoke associations, and set in motion parts of the psyche that are unable to move forward therapeutically. Awareness of actions, thoughts, and feelings are heightened and clarified with PMMP. This

session offers a case supporting the ongoing recovery of an alcoholic.

Contact: James A. Dziwak, MFT, MT-BC, 324 Calle Higuera, Camarillo, CA 93010-1729

10:45 am - 12:15 pm
C107

The Research Committee Presents: Foundations and Applications of Music-Centered Music Therapy Theory

Presenter(s): Kenneth Aigen, DA, MT-BC

Traditionally, music therapists have drawn from a variety of health related disciplines in creating theory. Music-centered approaches employ a different strategy, seeking to explain how music therapy works by examining the processes and structures of music itself. This presentation will cover the rationale for this approach and illustrate the clinical practices, which stem from it through clinical audio and videotape examples.

Contact: Kenneth Aigen, DA, MT-BC, 50 Hudson Street, Hastings-on-Hudson, NY 10706

10:45 am - 12:15 pm
C102

Level: Entry

West African Concepts in Creating Drum Circles: A Guide for the Music Therapist

Presenter(s): Keith Botello

Prsident: Michael D. Cassity, PhD, MT-BC

Drum circles are recognized for their therapeutic ability for relieving stress, strengthening immunity, creating a sense of community, and enhancing quality of life. This interactive, experiential workshop provides guidelines for facilitating improvisational drum circles, and also presents a more innovative, structured approach based on West African culture.

Contact: Keith Botello, 1317 Meadow Lane #5, Weatherford, OK 73096

10:45 am - 12:30 pm
C211

Research Poster Session

11:15 am - 1:15 pm
C106

Assembly of Delegates

12:00 pm - 2:00 pm
CONFERENCE CENTER

Cash Lunch



Saturday

12:15 pm - 1:30 pm
EXHIBIT HALL
Exhibit Spectacular

1:00 pm - 5:00 pm
CONFERENCE CENTER
Registration Open

1:30 pm - 3:30 pm
C105
Level: Professional
Capitol Hill Day - Taking the Model into the Regions

Presenter(s): Karen S. Wacks, EdM, LMHC;
Judy Simpson, MT-BC
Presider: Michelle R. Glidden, MEd, LMHC,
MT-BC

This presentation, modeled after the national Hill Day in Washington, DC, prepares members to meet effectively with their local state legislators to advance music therapy in public policy arenas. The aim is to demystify the legislative process and empower music therapists to confidently interact with legislators and their staff.

Contact: Karen S. Wacks, EdM, LMHC,
Berklee College of Music, 1140 Boylston
Street, Boston, MA 02215-3693

1:30 pm - 3:30 pm
C211
Level: Professional
The ABC's of Grant-Writing

Presenter(s): Michael E. Clark, MME, MT-BC;
Patricia Manley; Michael J. Rohrbacher,
PhD, MT-BC; Janice W. Stouffer, MT-BC;
Tamara W. Zavislan, MMT, MT-BC

Foundation, corporate and government grants can be excellent sources for music therapy program development and support and research. Learn how to navigate the competitive world of grant funding with successful grant recipients and funding representatives. Participants will learn the basics of writing a grant, the components of a complete grant proposal, resources and tips for researching funders, and the importance of building and maintaining relationships with funders.

Contact: Tamara W. Zavislan, MMT,
MT-BC, 8455 Colesville Road, Suite
#1000, Silver Spring, MD 20910

1:30 pm - 3:30 pm
C201-202
Level: Professional
Dances of Universal Peace - Through Music and Dance, Toward One World, Within and Without

Presenter(s): Cecilia Schulberg, MT-BC
Presider: Bruce M. Saperston, PhD, MT-BC

This workshop will explore the use of the Dances of Universal Peace in a wide variety of clinical, spiritual and educational settings. The Dances are simple yet deeply transformational, meditative, joyous, multi-cultural circle dances which incorporate breath, chants, music and movement from sacred healing traditions around the world to promote health and peace within oneself and one's community. During the past 30 years the Dances have been used in various settings, including (but not limited to): addictions and trauma treatment, physical rehab, holistic health programs, public schools, trans-personal counseling, ecumenical and environmental gatherings, conflict resolution and cross-cultural, and community building events. Psychomotor (Body) and Psycho-spiritual (Mind-Spirit) development and healing will be addressed for use in these types of settings.

Contact: Cecilia Schulberg, MT-BC, 1713
Catalpa Road, Carlsbad, CA 92009

1:30 pm - 3:30 pm
C102
Level: Professional
Early Childhood Roundtable

Presenter(s): Ronna K. Davis, MA, MT-BC;
Marcia E. Humpal, MEd, MT-BC

This roundtable serves as the annual meeting of the Early Childhood Network, first formed in 1994. It seeks to examine historical and best practices of the use of music therapy with young children. Any interested conferee is encouraged to attend and share information and ideas.

Contact: Marcia E. Humpal, MEd, MT-BC,
26798 Mangrove Lane, Olmsted Falls, OH
44138

1:30 pm - 3:30 pm
C212
Level: Professional, Entry
Going Beyond Stereotypical Boundaries: Providing Culturally-Sensitive and Ethically Sound Music Therapy

Presenter(s): Kristen M. Cole, MT-BC; Carolyn
Koebel, MT-BC; Theresa R Merrill, MMT,
MTA; Frederick C. Tims, PhD, MT-BC

This session focuses on the dynamics and nuances of race, culture, and sexuality in

the music therapy process, and the underlying ethical issues that they pose. We relate world musics to successful multi-cultural music therapy practice, and grapple with various dilemmas not addressed in the AMTA Code of Ethics.

Contact: Frederick C. Tims, PhD, MT-BC,
1987 Valleybrook Drive, Okemos, MI
48864

1:30 pm - 3:30 pm
C206
Level: Entry
Gospel Music: Good News in Music Therapy

Presenter(s): Karen J. Reed, MA, RMT
Presider: Karen E. Johnson, MT-BC

This session offers music therapists a chance to expand their improvisational skills, with a focus on blues and gospel music. While the approach is adaptable for use with different populations, the presenter focuses on forensic psychiatric clients, illustrating techniques which help motivate clients, encourage on-task behavior, and decrease anxieties.

Contact: Karen J. Reed, MA, RMT, 924
Patria Circle, Atascadero, CA 93422-6893

1:30 pm - 3:30 pm
C104
Jordan Can Sing: Humanistic and Transpersonal Reflections in Creative Music Therapy

Presenter(s): Suzanne Nowikas-Sorel, MA,
MT-BC
Presider: Joseph Fidelibus, MA, MT-BC

This presentation will review the music therapy process for Jordan, a six-year-old non-verbal boy diagnosed with autism. The presenter will also discuss clinical, psychological, and personal dynamics that related to humanistic and transpersonal writings. Videotaped examples will be shown.

Contact: Suzanne Nowikas-Sorel, MA,
MT-BC, 350 Cabrini Blvd Apt 6G, New
York, NY 10040-3650

1:30 pm - 3:30 pm
C207
Level: Professional, Entry, Student
Music Therapy Approaches for the Child with ADD/ADHD: The Roles of Music Cognition

Presenter(s): Clive E. Robbins, DHL, DMM,
MT-BC

A case study of music therapy with a boy presenting ADHD demonstrates the effectiveness of incorporating music education practices in a creative music therapy approach. The relevance of Csikszentmihalyi's theories of the



Saturday

Anatomy of Consciousness and Optimal Flow will be considered in interpreting and evaluating the process of therapy.

Contact: Clive E. Robbins, DHL, DMM, MT-BC, 2 Washington Square Vlge #12-1, New York, NY 10012

1:30 pm - 3:30 pm

C106

Level: Professional

Music Therapy and Medicine, 2001: Our Past, Present and Future

Presenter(s): Joke Bradt, PhD, MMT, MT-BC; Cheryl Dileo, PhD, MT-BC; Bridget A. Doak, MA, MT-BC; Douglas R. Keith, MT-BC; Kathleen Murphy, MMT, MT-BC; Victoria P. Vega, MMT, MT-BC; Mike Zanders, MT-BC

This session presents a meta-analysis of the cumulative literature on music therapy and medicine, with separate meta-analyses for twelve medical specialty areas: rehabilitation and physical medicine; cardiac and intensive care; neonatology; pediatrics; geriatrics and Alzheimer's disease; general hospital; surgery; terminal illness, cancer, and AIDS; stress; dentistry; obstetrics and gynecology; and pain.

Contact: Cheryl Dileo, PhD, MT-BC, 538 Covered Bridge Road, Cherry Hill, NJ 08034

1:30 pm - 3:30 pm

C204

Music Therapy with At-Risk Youth

Presenter(s): Deborah Bradway, MT-BC

This presentation details a research project conducted over this past year at a middle school in San Francisco, California. The seventh grade students who received music therapy are "high at-risk youth" from low income families, and many (about 1/3) are special education learners. Research results will be disseminated and clinical interventions will be experienced by session members via hands-on applications of techniques.

Contact: Deborah Bradway, MT-BC, 767 Rockaway Beach Ave, Pacifica, CA 94044

1:30 pm - 3:30 pm

C209-210

Level: Entry

Practicing Improvisation

Presenter(s): Lisa R. Jackert, MA, MT-BC; Sally C. Niles, MT-BC; Robin E. Rio, MA, MT-BC
Presenter: Kymila J. Eubanks, MT-BC

Improvisation is created in the moment, yet can be practiced. This session explores the application of improvisation, with examples for practice and improvement

of skills. The presentation demonstrates ways to reduce therapist anxiety, build confidence, assess client readiness, select instruments, and structure improvisation according to objectives and goals.

Contact: Robin E. Rio, MA, MT-BC, 7048 S 46th St, Phoenix, AZ 85040-6428

1:30 pm - 3:30 pm

C205

Level: Professional

The Appalachian or Fretted Dulcimer as a Tool in Music Therapy

Presenter(s): Cynthia J. Smith, MT-BC
Presenter: Roberta S. Adler, MT-BC

This workshop includes instruction of basic techniques in fretted dulcimer playing, as well as suggestions for clinical applications with various populations. Participants learn about different tunings and ways to adapt the dulcimer to client needs. Participants are asked to bring a dulcimer to facilitate direct learning.

Contact: Cynthia J. Smith, MT-BC, 13711 Richardson Way, Westminster, CA 92683

1:30 pm - 3:30 pm

C107

The Research Committee Presents: The Bonny Method of GIM: Scientific Evidence for a Therapeutic Art

Presenter(s): Cathy McKinney, PhD, MT-BC

Using quantitative methodology, researchers are developing a substantial case for efficacy of GIM for altering both psychological and physiological outcomes. This session will review this line of research as well as studies that have examined various aspects of spontaneous imaging with music.

Contact: Cathy McKinney, PhD, MT-BC, School of Music, Appalachian State University, Boone, NC 28608

1:30 pm - 3:30 pm

C208

Level: Professional

The Use of Active Music Therapy Interventions to Promote Coping Behaviors in Children with Cancer: Clinical Outcomes and Family Satisfaction

Presenter(s): Alicia A. Clair, PhD, MT-BC; Allison G. Ebberts, MME, MT-BC; Sheri L. Robb, PhD, MT-BC

AMTA is conducting a multi-site national study investigating the use of active music therapy interventions to promote coping behaviors in children with cancer. This session describes the music therapy protocol, presents videotaped sessions, reviews clinical and theoretical literature

supporting the interventions, and reports initial outcomes from the study.

Contact: Sheri L. Robb, PhD, MT-BC, 5005 W. 73rd Street, Prairie Village, KS 66208

1:30 pm - 3:30 pm

C214

Level: Professional

Violence in Schools: The Critical Antiviolence Role of Music Therapy

Presenter(s): Edith Hillman Boxill, MA, CMT; Christine A. Korb, MM, MT-BC; Joseph Moreno, MA, MME, MT-BC
Presenter: Michael J. Rohrbacher, PhD, MT-BC

Violence and the rise in school killings is a root problem in our society. Preventative and counteractive programs are crucially needed to provide alienated young people with positive alternatives to the destructive attitudes, behaviors, and actions that are rampant today. Music therapy has a critical anti-violence role to play.

Contact: Edith Hillman Boxill, MA, CMT, 375 Riverside Drive, Suite 11BB, New York, NY 10025

3:45 pm - 5:15 pm

C212

Level: Entry

Community Access for the Elderly: A Model for Inter-Generational Music Programs

Presenter(s): Teresa Cappello; Pam Mammarella; Patricia Manley

In the Voices of Ages program, residents from a skilled nursing facility (average age, 75) travel weekly to a music school for classes, singing, and performances with children ages 9-13. This presentation offers a 20-minute video documentary about the program, and details about the planning process and documented outcomes.

Contact: Patricia Manley, Settlement Music School, 6128 Germantown Avenue, Philadelphia, PA 19144



Saturday

3:45 pm - 5:15 pm
C104

Level: Professional
Educators Roundtable: Exchanging Information and Ideas for Implementation of New AMTA Standards

Presenter(s): Suzanne B. Hanser, EdD, MT-BC; Myra J. Jordan, MMEd, MT-BC; Lalene D. Kay, MM, MT-BC; Sheri L. Robb, PhD, MT-BC; Marilyn I. Sandness, MM, MT-BC; Evelyn C. Selesky, MA, CMT; Elizabeth F. York, PhD, MT-BC

Prsider: Marilyn I. Sandness, MM, MT-BC

This roundtable provides an opportunity for music therapy educators to discuss the implementation of new AMTA standards for education and clinical training, including curricular structures to meet competency objectives; evaluation of student competence levels throughout the program; integration of students' academic and clinical training experiences; and program evaluation.

Contact: Marilyn I. Sandness, MM, MT-BC, PO Box 751231, Dayton, OH 45475-1231

3:45 am - 5:15 pm
C209-210

Level: Entry
Music Therapy, Sensory and Spiritual Connections for Persons with Alzheimer's Disease

Presenter(s): Nancy M. Lloyd, MM, WMTR, CMT
Prsider: ~~CANCELLED~~ Janice L. Brandes, MT-BC

This session describes a needs-based and soothing sensory approach for persons with Alzheimer's disease who seek spiritual connections, but may have difficulty accessing them. Through music ministry, the presenter has found that effective music enhances clients' quality of life, memory stimulation, sense of identity, and sense of inherent dignity.

Contact: Nancy M. Lloyd, MM, WMTR, RMT, 1732 Southland Avenue, Oshkosh, WI 54902-4118

3:45 pm - 5:15 pm
C211

Level: Student
Factors in Your Future: Considerations in Selecting A Music Therapy Internship

Presenter(s): Jo Elynn Berky Beck, PhD, MT-BC; Theresa M. McManus, MT-BC; Donna W. Polen, MT-BC

This session provides students with information crucial to the process of internship selection; describes their rights and responsibilities, both as applicants and as interns; and offers suggestions for supportive resources. Published

guidelines and competencies are reviewed, and the variety of training options currently available are discussed.

Contact: Donna W. Polen, MT-BC, 67 Waterford Way, Fairport, NY 14450-9749

3:45 pm - 5:15 pm
C207

Level: Professional, Entry, Student
Music Therapy for Grieving Children and Adults: A Research-Based Model

Presenter(s): Russell E. Hilliard, MSW, MT-BC; Jennifer Justice

Prsider: Dena Register, MM, MT-BC

Using the results of empirical research studies conducted by the presenters, this session offers music therapy clinical interventions used in assisting children and adults working through grief in a support group format. Clinical needs of the grieving are outlined by developmental stages, and models of interventions are reviewed and analyzed.

Contact: Russell E. Hilliard, MSW, MT-BC, 2652 Tess Circle, Tallahassee, FL 32304

3:45 pm - 5:15 pm
C205

Level: Entry
Practicing Music Therapist & Performing Musician: Can One Person Do Both?

Presenter(s): Abaad Behram; Tina Haynes, MT-BC; Sean A. Lane, MEd, MT-BC

This roundtable discussion features practicing music therapists who are also professional musicians. Panelists discuss their career paths, highlighting relevant successes and challenges, benefits and drawbacks, and focusing on how both careers can coexist, and how each can support the other. Throughout the session, time for questions and answers is provided.

Contact: Sean A. Lane, MT-BC, 1507 Crofton Parkway, Crofton, MD 21114

3:45 pm - 5:15 pm
C102

The Story of Helle Told by Rock Music

Presenter(s): Sten Roer, MA, CMT

This presentation will focus on a woman with schizo-affective disorder who worked with the presenter during a four year period. Although the woman had no formal musical training, she was a strong member of the rock band formed in the hospital. The relationship of psychiatric treatment and participating in a rock band will be explored in this presentation.

Contact: Sten Roer, MA, CMT, University of Aarhus, Psychiatric Hospital, DENMARK

3:45 pm - 5:15 pm
C201-202

Level: Professional, Entry, Student
Traumatic Incidents: Defined, Reactions, and a Music Therapy Treatment Program

Presenter(s): Suzanne G. Smith, MT-BC
Prsider: James E. Borling, MM, MT-BC

This presentation defines traumatic events, survivor reactions and subsequent behaviors, and reviews established treatment approaches, according to published literature. Additionally, the presentation addresses important issues for music therapists to consider when employing the use of music therapy as a treatment approach for survivors of traumatic events.

Contact: Suzanne G. Smith, MT-BC, 5727 Cedar Walk Way, #104, Centreville, VA 20121



3:45 pm - 5:15 pm
C107

Musically Assisted Speech

Presenter(s): David Ramsey, MA, ACMT

The presentation will focus on music therapy with persons with aphasia. Topics include: neurology of aphasia, theory and practice of musically assisted speech and restoration of essential human experiences through music making.

Contact: David Ramsey, MA, ACMT, 194 Bergen Ave., Bergenfield, NJ 07621-2437



Saturday, Sunday

3:45 pm - 5:15 pm
C105

Level: Professional, Entry, Student
Treating Persons with Sickle Cell Disease through Music Therapy and Medicine

Presenter(s): Brian Abrams, PhD, MT-BC;
Joanne Loewy, DA, MT-BC; Lauren Shaiova,
MD

Presenter: Bryan J. Muller, MMT, MT-BC

This presentation describes collaborative efforts of music therapy and medicine in the treatment of persons with sickle cell disease. Information on the nature and treatment of the illness is offered, from both medical and music therapy perspectives. Case illustrations and an interactive music experience are also provided.

Contact: Brian Abrams, PhD, MT-BC, 829
North 500 East, Logan, UT 84321

3:45 pm - 5:15 pm
C106

Level: Professional, Entry, Student
Unity through Percussion

Presenter(s): Eric M. Kramer

This workshop supports teamwork, community, problem solving, stress relief, and healing. It begins with an energy-building performance, followed by a game about developing community and team, then information on building the ensemble through rhythm development. The question-and-answer format helps participants understand how building an ensemble relates to community and teams.

Contact: Eric M. Kramer, 6625 San Bonita,
Clayton, MO 63105

5:30 pm - 7:00 pm
EXHIBIT HALL THEATRE

AMTA Business Meeting

Come and meet the AMTA candidates for office just after the business meeting in the Exhibit Hall!

5:30 pm - 7:00 pm
C107

AMTAS Business Meeting

7:00 pm - 8:30 pm
C104

Autism Task Force

9:00 pm - 1:00 am
C106

Cabaret

Sunday, October 28

6:30 am - 8:30 am

CONFERENCE CENTER
Cash Breakfast

7:00 am - 8:00 am

C106
Assembly of Delegates-Elect Meeting

7:00 am - 2:00 pm

CONFERENCE CENTER
Registration Open

8:00 am - 9:30 am

C104

Level: Professional

America's Interest in Complementary and Alternative Medicine: What It Means for Music Therapy Research and Practice

Presenter(s): Debra S. Burns, PhD, FAMI,
MT-BC; Renata Maddux

The general population's interest in complementary and alternative medicine (CAM) has grown considerably over the past ten years. As a mind-body therapy, music therapy has not been adequately addressed within the CAM utilization literature. This presentation focuses on individual factors associated with CAM use and corresponding implications for music therapy.

Contact: Debra S. Burns, PhD, FAMI,
MT-BC, 1111 Middle Dr. #NU338,
Indianapolis, IN 46202-5107

8:00 am - 9:30 am

C201-202

Level: Entry, Student

From Everything — A Song! Everyone A Songmaker - Songmaking in Special Education Settings

Presenter(s): Ellen F. Stein, MEd, MT-BC

Presenter: Nancy Skaliotis, MA, CMT

This presentation provides participants with original and thoroughly tested songs designed to meet specific therapeutic and/or educational goals. Included are name and seasonal songs, songs to boost self-image, and songs that stimulate language. The presenter details the songs' origins, ways to expand their use, and techniques for incorporating participants' contributions.

Contact: Ellen F. Stein, MEd, MT-BC, 26
Collins Avenue, Closter, NJ 07624

8:00 am - 9:30 am

C212

Level: Professional, Entry, Student

How to Build a Cooperative Relationship: Therapeutic Recreation and Music Therapy Together

Presenter(s): Shoshannah B. Elsbree, MS,
MT-BC; Patricia Murray, BS-TRS

Presenter: Joy Allen, MT-BC

This presentation explores Therapeutic Recreation (TR) and promotes music therapists' understanding of TR, reinforcing multi-disciplinary collaboration. Comparisons are made between TR and MT, previous misconceptions about TR are amended, examples of therapeutic activities are offered, and the opportunity to engage in a therapeutic recreation experience is given.

Contact: Shoshannah B. Elsbree, MS,
MT-BC, 49 Wading River Rd, Center
Moriches, NY 11934



8:00 am - 9:30 am

C102

Level: Entry

If You Want to Understand Me, Listen to My Music: Sexual Abuse

Presenter(s): Amy Hammel Zabin, DA, MM,
MT-BC

These are the words an incarcerated pedophile used to introduce himself to his music therapist. This pedophile was a scout leader, church deacon, and computer programmer who sexually abused hundreds of children. The presenter shares how she worked with him through singing, musical free association, improvisation, song analysis, drumming, and songwriting.

Contact: Amy Hammel Zabin, DA, MM,
MT-BC, 16 Carpenter's Brook Road,
Greenwich, CT 06831

Sunday

SESSIONSCHEDULE

8:00 am - 9:30 am

C214

Level: Professional, Entry, Student

Music Listening Mirroring the Sounds of the Soul: A Source for Self-Appraisal

Presenter(s): Sr. Donna Marie Beck, PhD, FAMI, MT-BC
Presider: Sr. Mariam Pfeifer, MA, MT-BC

The importance of being a "listening presence" is key to the music therapist's effectiveness. By creating sacred space for experiencing music listening processes—as posited by Helen Bonny—we create an opportunity for self-appraisal, and can become more aware of our personal modes of presence as listeners.

Contact: Sr. Donna Marie Beck, PhD, FAMI, MT-BC, Duquesne University, School of Music, Pittsburgh, PA 15282

8:00 am - 9:30 am

C207

Level: Professional, Student

Music Therapy 101 for Professors: Students Educating Their Educators on the Benefits of Music Therapy

Presenter(s): Audrey Bowser; Angela Carbonell; Karen S. Epps, MM, MT-BC; Alison Hart; Kathryn Marfell; Randolph Partain; LeAnn Stover; Casandra Velez
Presider: Betsey King Brunk, MMT, MT-BC

A music therapy student organization prepared and presented an inservice to the School of Music faculty on the basics and benefits of music therapy. This session addresses the need for educating professors about music therapy, the process involved in presenting Music Therapy 101, and faculty responses to the inservice.

Contact: Karen S. Epps, MM, MT-BC, 2521 Crostinbers, J-2, Huntsville, TX 77320

8:00 am - 9:30 am

C107

Level: Professional, Entry, Student

The "Start the Music" Initiative: Implications for Music Therapists Who Work with Young Children

Presenter(s): Marcia E. Humpal, MEd, MT-BC

"Start the Music" is a nationwide early childhood initiative bringing quality music experiences to young children. This presentation gives an overview of the initiative and its mission. Participants examine content standards for using music with pre-kindergarten children, and learn skills for blending music therapy,

music education, and early childhood goals.

Contact: Marcia E. Humpal, MEd, MT-BC, 26798 Mangrove Lane, Olmsted Falls, OH 44138

8:00 am - 9:30 am

C105

Level: Professional

The Missing Link: Experiential Training in Music Therapy

Presenter(s): Bryan J. Muller, MMT, MT-BC
Presider: Brian Abrams, PhD, MT-BC

Experiential training can be an invaluable tool in addressing such issues as students' emotional readiness for internship and the difficulties inherent in integrating knowledge and skill. This session delineates the various methods of experiential training, reviewing the literature, current practice, and future applications of experiential training in music therapy education.

Contact: Bryan J. Muller, MMT, MT-BC, 6600 McCallum Street 3R, Philadelphia, PA 19119

8:00 am - 9:30 am

C209-210

Level: Entry

Writing Your Musical Autobiography

Presenter(s): Marie Di Giammarino, EdD, MT-BC
Presider: Judy Belland, MCAT, MT-BC

This presentation leads participants through a reminiscence and sharing process designed to help them recall significant musical moments in their lives from early childhood through adulthood. Participants are encouraged to share their musical memories, a song, and/or

information about a musical composition significant to them.

Contact: Marie Di Giammarino, EdD, MT-BC, 513 Greenbriar Drive, #7, Normal, IL 61761-6901

9:45 am - 11:45 am

C105

Level: Professional

A Prescription for Pain and Anxiety: Music Therapy Interventions in Burn Care

Presenter(s): Carol A. Achey, MT-BC

The Joint Commission on Accreditation of Healthcare Organizations now requires facilities to assess patients' perceived pain levels. In this workshop, participants are introduced to two interventions—Music Based Imagery and Musical Alternate Engagement—which are effective in addressing patient pain and anxiety. Participants can also create and practice these interventions.

Contact: Carol A. Achey, MT-BC, 9511 Lake Shore Blvd., Bratenahl, OH 44108

9:45 am - 11:45 am

C104

Adolescent Substance Abuse: Research, Assessment and Treatment Strategies

Presenter(s): Bridget A. Doak, MA, MT-BC; Annie L. Heiderscheid, MS, MT-BC

Presider: Debra S. Burns, PhD, FAMI, MT-BC

This presentation will review relevant music therapy literature regarding adolescents with addictions. Research that is pertinent for this client population will also be discussed. The presenters will also explore the implications for assessment and present various treatment strategies.

Contact: Annie L. Heiderscheid, MS, MT-BC, 9722 Ives Lane N., Maple Grove, MN 55369

9:45 am - 11:45 am

SHERATON - CORDOVA

AMTA Executive Board Meeting

9:45 am - 11:45 am

C102

Level: Professional

Contracting Music Therapy in Special Education

Presenter(s): Lillieth Grand, MS, MT-BC
Presider: Brandi Jo Carson, MT-BC

This presentation covers many aspects of music therapy in the special education setting: federal and state laws, funding sources, justification of music therapy services (including educational benefits,



Sunday

specialization, and goals and objectives), contracting versus consulting, and the responsibilities of the music therapist (including assessment, documentation, reports, and implementation).

Contact: Lillieth Grand, MS, MT-BC, 1605-A Coriander Dr, Costa Mesa, CA 92626

9:45 am - 11:45 am
C107

Level: Professional
Curricular Strategies to Address Undergraduate Music Therapy Students' Self-Development

Presenter(s): David W. Luce, PhD, MT-BC; Joni Milgram-Luterman, PhD, MTA, MT-BC

Establishing a therapeutic relationship requires that music therapists recognize the impact of their own feelings, attitudes, and actions on the client and the therapy process. This workshop presents two curricular approaches to help students meet this competency: music therapy peer support groups and collaborative learning processes.

Contact: David W. Luce, PhD, MT-BC, 2111 Hazel Street, Oshkosh, WI 54901

9:45 am - 11:45 am
C205

Level: Entry
Documentation of Music Therapy Interventions - Does It Really Matter?

Presenter(s): Nola M. Karim, MT-BC; Catherine A. Thrasher-Carroll, MA, MT-BC
Presenter: Tammi D. Reed

Written documentation is often the only source of communication between the music therapist and other health care professionals. This session assists the practicing music therapist to hone documentation skills through participation in dyad work, small group activities, and whole group discussions. Topics include assessment, goals and objectives, and treatment plans.

Contact: Catherine Thrasher-Carroll, MA, MT-BC, 7202 N Donnelly Ave, San Gabriel, CA 91775-1238

9:45 am - 11:45 am
C106

Level: Professional, Entry
Experiencing Two Models of Music Therapy to Promote Wellness: Multi-Cultural Drumming and Group Keyboard Lessons

Presenter(s): Carolyn Koebel, MT-BC; Frederick C. Tims, PhD, MT-BC

This session compares two considerably different models for using music therapy to promote wellness. A study of community drum circles and their affect



on stress hormone levels; mood, stress and socialization changes; and journeying experiences is compared with a study of the health effects of group keyboard lessons on retirees.

Contact: Frederick C. Tims, PhD, MT-BC, 1987 Valleybrook Drive, Okemos, MI 48864

9:45 am - 11:45 am
C212

Level: Entry
Hand in Hand: Music Therapy and Student Success in Inclusive Kindergarten Classrooms

Presenter(s): Patsy Sue Fogel, MT-BC
Presenter: Carol L. Culton, PhD, MT-BC

This workshop provides specific techniques used daily in the "Hand in Hand" inclusive kindergarten program, which integrates typical kindergarten students with special needs students each afternoon to attend art, adaptive physical education, and music therapy sessions. Participants view videotapes of class sessions and experience activities used with all the classes.

Contact: Patsy Sue Fogel, MT-BC, 7612 Rt 52 South, Dubuque, IA 52003

9:45 am - 11:45 am
C211

Level: Professional
Healing the Sexually Abused Child: Music Therapy Techniques and Strategies

Presenter(s): Sarah J. Laing, MMEd, MT-BC; Deborah Layman, MT-BC

This presentation focuses on the use of a cognitive-behavioral approach to music therapy assessment and intervention with sexually abused children, illustrated with case examples. Music therapists are in a key position to assess and treat these clients, as we offer a non-threatening,

supportive setting to address intense emotions and behaviors.

Contact: Deborah Layman, MT-BC, 32757 Brookstone Ln, N Ridgeville, OH 44039

9:45 am - 11:45 am
C214

Level: Entry
I Want A Turn - Keeping It Together in Group Music Therapy

Presenter(s): Mollie D. Caravello, MT-BC; Mindy L. Smith, MT-BC

This presentation focuses on the utilization of music therapy techniques in group settings. The presenters address optimal seating arrangements, planning group sessions, and documentation for integrated and non-integrated students within a classroom. Various obstacles typically encountered, and possible solutions to these situations, are also addressed.

Contact: Mollie D. Caravello, MT-BC, 216 Vernon Street, Norwood, MA 02062

9:45 am - 11:45 am
C204

Level: Entry, Student
Let's Play! Using Music to Reach Young Children and their Teachers

Presenter(s): Dena Register, MT-BC
Presenter: Jane E. Hughes, MA, MT-BC

This workshop outlines how children learn through play and how to incorporate music into the classroom routine. We examine the various developmental domains of young children and allow participants to experience activities that are developmentally appropriate and facilitate growth for children of all ability levels.

Contact: Dena Register, MM, MT-BC, 2420 Basswood Ln, Tallahassee, FL 32308-6283

9:45 am - 11:45 am
C207

Level: Entry
Music Therapy for Individuals with Developmental Disabilities; Acute Multi-handicapped through Behavior Disorders

Presenter(s): Carmen A. AQUI, MT-BC; Belinda AQUI-LoVerde; Carol A. Jackson, MT-BC; Renee C. Quitania, MT-BC; Hoa Ai Truong; Heather Vitale-Rashtian; Gail Wilkins, MT-BC; Jennifer Ann Woodman-Duffy, MT-BC

Presenter: Lillieth Grand, MS, MT-BC

This experimental workshop takes participants on an odyssey of proven music therapy techniques and tools used to serve individuals with severe-profound

Sunday

developmental disabilities. Somatron, MIDI, tone chimes, improvisation, rhythm instruments, live music, free from sessions, and other approaches are demonstrated and explored, all from a developmental model.

Contact: Jennifer Ann Woodman-Duffy, MT-BC, Lanterman Developmental Center, 3530 W Pomona Blvd, Pomona, CA 91768

9:45 am - 11:45 am
C208

Level: Professional, Entry, Student
Music Therapy Small Business: From Dream to Reality

Presenter(s): Mary Jane Landaker, MT-BC

This workshop is aimed at those who want to establish their own small music therapy business, but are unsure how to do it. The workshop provides sample business plans; discusses legal issues, ways to advertise, and tips on presenting to audiences; and offers information on budgeting money, time and resources.

Contact: Mary Jane Landaker, MT-BC, PO Box 35, Perry, KS 66073-0035

9:45 am - 11:45 am
C201-202

Level: Entry
Practical Guidelines for Conducting Music-Assisted Relaxation Sessions

Presenter(s): Tina Haynes, MT-BC

This session presents practical how-to's for conducting a successful relaxation session. Included are tips for room set up, scripts for different inductions, simple assessment methods for therapist and client, samples of music, and information on how to use the voice. Participants are also guided through a brief experiential session.

Contact: Tina Haynes, MT-BC, 3647 Dixie Lane, Murfreesboro, TN 37129

9:45 am - 11:45 am
C209-210

Level: Professional
The Health Information Portability and Accountability Act (HIPPA): Its Wide Ranging Implications for Music Therapy

Presenter(s): Stephan Betz, PhD, MT-BC
Presider: Kay L. Roskam, PhD, MT-BC

This workshop will provide an overview to music therapy practitioners, administrators and lecturers concerning those parts of HIPPA that apply to music therapy.

Contact: Stephan Betz, PhD, MT-BC, 203 Riverview Ter., Benicia, CA 94510-2753

12:00 pm - 1:00 pm
EXHIBIT HALL THEATRE
Conference Wrap-Up

2:00 pm - 7:00 pm
C106

Level: Professional
S. Introduction to Pre and Peri-Natal Music Therapy

Presenter(s): Mary P. Di Camillo, EdD, MT-BC;
Cathleen M. O'Neil, MT-BC
Presider: Lillieth Grand, MS, MT-BC

This workshop is designed to introduce all interested professional to the field of Pre and Peri-Natal Music Therapy. Participants will engage in experiential exercises exploring sensory perception of the developing baby in the womb and learn about music therapy research, clinical practice models and techniques in this field.

5 credit hours — Pre-registration and fee required
Contact: Mary P. Di Camillo, EdD, MT-BC, 14 Via Estampida, Rancho Santa Margarita, CA 92688

2:00 pm - 7:00 pm
C105

Level: Professional, Entry
T. Music Entrainment for Pain Management

Presenter(s): Joke Bradt, PhD, MT-BC

This workshop will discuss physiological, cognitive, affective and social components involved in music entrainment for pain management. A detailed discussion of potential benefits and risks of this intervention will follow explanation and demonstration of the music entrainment process. Participants will have the opportunity to practice this technique.

5 credit hours — Pre-registration and fee required
Contact: Joke Bradt, PhD, MT-BC, 504 Irvington Rd, Drexel Hill, PA 19026

2:00 pm - 7:00 pm
C211

Level: Professional, Entry
U. Didactic Workshop in How to Improvise Using the Major Diatonic Modes

Presenter(s): Frank Wagner, MA, CMT

This first part of this workshop will consist of theoretical information on formulating and constructing the seven major diatonic modes. The second part will be a hands-on approach to successfully incorporate improvisational mastery on an instrument utilizing the modes.

5 credit hours — Pre-registration and fee required
Contact: Frank Wagner, MA, CMT, 315-17 W. 98th St. Apt. 8BF, New York, NY 10025

2:00 pm - 7:00 pm
C107

V. Modeling on the Past, Techniques for the Future

Presenter(s): Joseph Fidelibus, MA, MT-BC;
Clive E. Robbins, DHL, DMM, MT-BC

This workshop will provide an in-depth study of a course of music therapy. Careful examination will be given to the process of therapy, clinical techniques, and simulating clinical situations as a means of developing improvisational clinical musicianship.

5 credit hours — Pre-registration and fee required
Contact: Clive E. Robbins, DHL, DMM, MT-BC, 2 Washington Square Vlge #12-I, New York, NY 10012

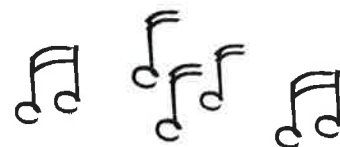
2:00 pm - 7:00 pm
C208

Level: Professional
W. Programme Movie Music Psychotherapy Achieving Emotional, Cognitive, and Behavioral Integration

Presenter(s): James A. Dziwak, MFT, MT-BC

This introduction to PMMP presents an approach in psychotherapy, which enables a client to evoke associations, and set in motion parts of the psyche that are "stuck." Awareness of themes in the client's life is heightened and clarified with the introduction of carefully prescribed musical selections from Programme Movie Music, allowing access to new insights.

5 credit hours — Pre-registration and fee required
Contact: James A. Dziwak, MFT, MT-BC, 324 Calle Higuera, Camarillo, CA 93010-1729





Local Conference Committee

LOCAL COMMITTEE CHAIR
Ron Borczon, MM, MT-BC

VOLUNTEER COMMITTEE
Holly Baxter, MT-BC

INSTRUMENT COMMITTEE
Ricanne Stromoski
Lesla MacEwan
Erin Salez

ENTERTAINMENT COMMITTEE
Holly Baxter, MT-BC

PUBLIC RELATIONS COMMITTEE
Lora Hnat

STUDENT COMMITTEE
Jennifer Brown, MT-BC
Kasi Frey

CONFERENCE PROGRAM REVIEW COMMITTEE
Laurie Farnan, MMT, MT-BC
Michele Forinash, DA, LMHC, MT-BC
Michelle Hairston, EdD, MT-BC

ABSTRACT EDITOR
Lisa Kynvi, MA, MT-BC

Conference Management Staff

EXECUTIVE MANAGER
Andrea Farbman, EdD

CONFERENCE MANAGER
Al Bumanis, MT-BC

SPECIAL EVENTS COORDINATOR
Tamara Zavislan, MMT, MT-BC

EXHIBITS COORDINATOR
Jane Creagan, MT-BC

AMTA EXHIBIT BOOTH COORDINATOR
Dianne Wawrzusin, MMT, MT-BC

ADMINISTRATIVE SERVICES COORDINATOR
Angie Elkins, MT-BC

ADMINISTRATIVE COORDINATOR
Judith Kaplan, MEd

REGISTRATION MANAGER
Cindy Smith

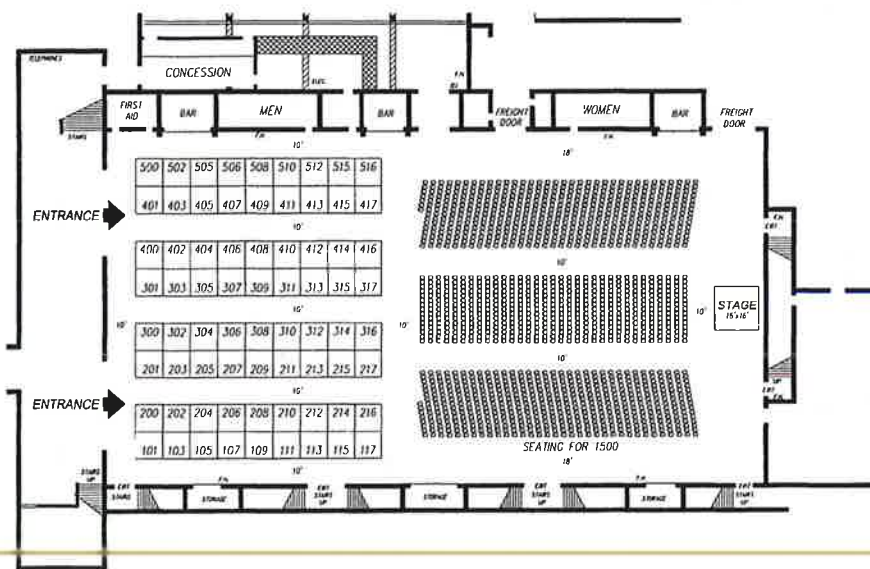
PUBLIC RELATIONS COORDINATOR
Judy Simpson, MT-BC

STAFF ASSISTANT
Rebecca Smith



Exhibit Hall

The exhibit hall will feature a dazzling array of instruments, music, and other exciting products for use in your work or for your personal use. This Conference features three hours of unopposed time in the exhibit hall, called the *Exhibit Spectacular*. On Friday from 11:45 am – 1:30 am, and on Saturday from 12:15 am – 1:30 pm there are no sessions competing with the exhibits, so conference attendees will be able to spend time visiting the exhibits. The Exhibit Hall will be open on Thursday from 2:30 pm – 5:00 pm. The Exhibit Hall *Grand Opening* will take place Thursday evening at 9:30 pm after the Opening Session and will include a Silent Auction and Reception.



Conference Exhibitors and Booth Numbers

Associations/Non-Profit Agency

- 301, 303, 400, 402 American Music Therapy Association
- 417 Big Brazos Children's Center
- 209, 211 Certification Board for Music Therapists***
- 506 Miracles Through Music
- 313 NAMM International Music Products Association
- 404-408 Therapeutic Arts GIM Institute

Association Members

- 404-408 Karen's Music Master Key
- 404-408 Prelude Music Therapy Products
- 404-408 Therapeutic Arts GIM Institute

Early Childhood

- 505-506 Kindermusik International
- 312 Music Together

Music Therapy Equipment

- 304 Rhythmic Medicine
- 205 Sound Birthing

Keyboard/Electronic Instruments

- 310 Lowery Organ Company***
- 309, 311 Brook Mays Music Company
- 407, 409 Technics Musical Instruments***

Music Companies/Publishers

- 309, 311 Brook Mays Music Company
- 305 Dancing Dots
- 210, 203, 300, 302 MMB Music, Inc.***
- 103,105 Mars Music
- 200-206 Music is Elementary
- 410-416 Suzuki Musical Instruments
- 405 HSS/Sonor***
- 401, 403, 500, 502 West Music Company***

Percussion

- 217, 316 REMO, Inc.***
- 516 Rhythm Fusion
- 216 Thunder Drums

Regions

- 510 Mid-Atlantic Region
- 314 Western Region Students

Related Organizations

- 101 Sound Therapy Center of LA

Schools

- 308 Berklee College of Music
- 207 CSUN-Northridge
- 415 Lesley University
- 413 MCP Hahnemann University
- 213 Naropa University
- 215 Sam Houston State University
- 307 Saint- Mary-of-the-Woods College
- 306 University of Miami
- 208 Western Michigan University

Technology

- 411 Accordance Music Systems
- 309, 311 Brook Mays Music Company
- 305 Dancing Dots
- 407, 409 Technics Musical Instruments

Wind Instruments

- 304 Rhythmic Medicine

List complete as of publication

*** AMTA Patron Member

** AMTA Affiliate Member

Conference Exhibitors

American Music Therapy Association (AMTA)

Booths 301, 303, 400, 402

The American Music Therapy Association, is committed to the advancement of education, training, professional standards, and research in support of the music therapy profession. Official publications include: the *Journal of Music Therapy*, a quarterly research oriented journal, *Music Therapy Perspectives*, a semi-annual practice oriented journal, a quarterly newsletter, and a variety of other monographs, bibliographies, and brochures. AMTA products and materials will be featured at the booth. A new feature this year - "Club AMTA" - will have the latest music therapy information and materials.

Representatives: Dianne Wawrzusin, Jane Creagan, Rebecca Smith

*Association Members

Booths 404, 406, 408

(booths shared by multiple members)

*Karen's Music Master Key

Music is the Master Key is a new book that addresses applications of music therapy with the forensic psychiatric population. This book, along with T-shirts and Jackets with the same title will be featured at the exhibit booth.

Representatives: Karen J. Reed, Charlotte Reed, Rebecca Mann

*Prelude Music Therapy

Products

Prelude Music Therapy specializes in low cost, practical materials for use by music therapists who work with students with developmental disabilities in the public school, private school, or private therapy setting. Materials include songbooks, accompaniment tapes,

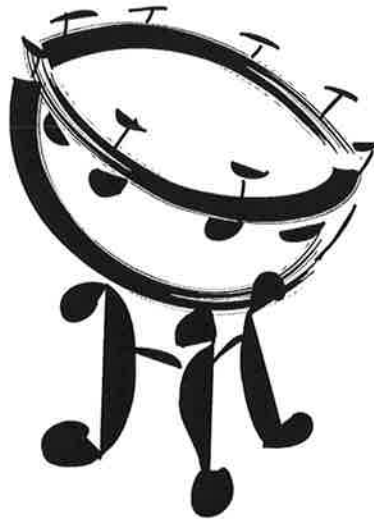
visual aid kits, a public school assessment book and other music therapy resource books.

Representatives: Kathleen Coleman, Betsey Brunk, Debbie Dacus

*Therapeutic Arts GIM Institute

After 10 years of successful training in Europe, Therapeutic Arts offers a unique one year training in Music and Imagery and full training in the Bonny Method of Guided Imagery and Music in the United States. Programs are designed by the former director of training at the Bonny Foundation.

Representatives: Frances Smith Goldberg, Lisa Summer, Cecilia Schulberg



Accordance Music Systems

Booth 411

Accordance music performance software allows clients of all ages to instantly "jam" along with songs using just the PC's computer keyboard as an instrument (or any attached Midi device). Keystrokes automatically fit harmonically in real time, creating instant musical gratification! Clients can record sessions to replay and share their musical creations. Free demo at www.accordance.net. Accordance

Music Systems will demonstrate the Music Therapy Edition of the software, and offer conference attendees free registration to download and use demonstration copies of the software. Copies of the software will be on sale at the booth.

Representatives: Julie Ann Pratt, Jonathon Todd, Jeremy Wasser, Chuck Abronson

Berklee College of Music

Booth 308

Berklee College of Music in Boston, MA is one of the world's largest independent music colleges and premier institutions for the study of contemporary music. Berklee College of Music offers courses toward a fully accredited four-year baccalaureate degree or diploma. College information, admissions applications, Music Therapy brochures and instrumental brochures will be available at the booth. For more information call 800-BERKLEE (USA/Canada), 617-747-2222 (International) or visit us at www.berklee.edu.

Big Brazos Children's Center (SOIC)

Booth 417

Big Brazos Children's Center is a non-profit organization developed to increase the awareness and use of cultural music, instruments, and other art forms. Many of these musical instruments have been made by or for children to develop rhythm and movement through the use of natural resources by various countries. Musical instruments and manipulatives, music CDs for rhythm and music in the classroom will be available at the exhibit booth.

Representatives: Rachel Day, David Benford

Brook Mays Music

Booths 309-311

Brook Mays Music is the largest full line music retailer in the country. Brook Mays employs full and part time music therapists. We offer the best selection of instruments and software, at the guaranteed lowest prices, with help from a most knowledgeable staff. A selection of midi-keyboards, computer music software for therapists, and their clients, plus drums, guitars, Omnichords, and other instruments will be available.

Representative: Julie Romeo, Daniel Tague

CSUN Music Therapy

Booth 207

California State University Northridge is a wonderful learning environment to pursue a music therapy degree. Augmented by a fully operational clinic, students apprentice with trained Nordoff-Robbins clinicians, as well as other philosophical approaches. CSUN program packets and information will be available at the booth.

Representatives: Brian Hirsch, Panayiota Rotsidou

Certification Board for Music Therapists (CBMT)

Booths 209-211

The Certification Board for Music Therapists certifies professional music therapists through examination, and re-certifies them every five years through a program of continuing education. Representatives will be available to answer questions and provide materials related to CBMT programs.

Representatives: Joy Schneck, Michael McGuire, Leslie Hunter, Lee Anna Rasar, Celeste Behnke, Suzanne Oliver

Dancing Dots

Booth 305

Dancing Dots promotes music literacy for the blind. Source for Braille music teaching aids, introductory texts and full



curriculum for educators. Provides assistive technology, music hardware and software, and the consultation and training to optimize its use. Scan, edit, print or Braille notation. Create audio for radio, television or film.

Representatives: David Pinto, Richard Taesch

HSS/Sonor

Booth 405

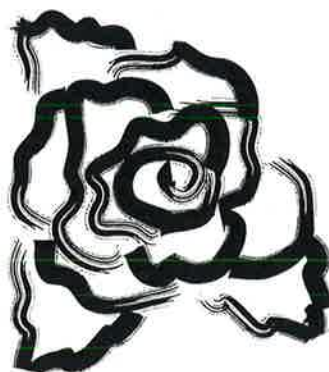
Sonor Orff- Music and Movement instruments will be on display including bass bars, xylophones, glockenspiels. In addition Hohner acoustic guitars, a small selection of Sabian Cymbals, Samba Orff Instruments, and Playful Harmonies Rhythm and Wind Instruments will also be available.

Representatives: Tim Henry, Kathy AuBuchon, Pat Keefe, Robert Cotton

Kindermusik International

Booths 505, 506

Kindermusik is the most respected name in musical learning for young children. By consulting with experts



in child psychology, literacy, movement, language, and vocal development, we create an accepting environment where special needs children and their families with "typically developing" children and parents are educated as we treat the child. Products and services, which include curriculum samples, music collections, interactive course materials, and informational videos, will be available at the exhibit booth.

Representative: Robin Gentile

Lesley University

Booth 415

Lesley University, located in Cambridge, MA offers an MA in Expressive Therapies with specialization in Music, Dance, and Art Therapies. The Music Therapy Specialization is approved by AMTA. Training is in the expressive therapies in addition to music therapy. Graduates are eligible for certification from CBMT and licensure as mental health counselors in the commonwealth of Massachusetts. Lesley University also has a new PhD program in Expressive Therapies. This program is the first of its kind in the country. Information on the program and brochures will be available at the exhibit booth.

Representative: Michele Forinash

Lowrey Organ Company

Booth 310

The Lowrey Organ Company offers a complete line of organs-models designed and built for the hobby player. The organs are beautiful pieces of furniture as well as beautiful sounding instruments that are easy to operate and play. Many older Americans are playing music for a hobby and the home organ has become their first choice of instrument to own. There will be a detailed display of the new "Lowrey Magic Organ Course", along with a video of several music making and wellness activities that are being incorporated into the Lowrey Magic

Organ course. The activities are designed and demonstrated by Dr. Alicia Ann Clair, PhD, MT-BC of the University of Kansas.

Representatives: Mel Wisniewski, Carol Fanetti, Satoshi Takada, Mike Dunn, Amy Zang

**MCP Hahnemann University
Booth 413**

Advanced graduate music therapy clinical education offered within a health science university. The music therapy program is housed within a creative arts in therapy department. Music therapy students train with art and dance/movement therapy students while retaining their professional identity. Diverse faculty includes creative arts therapists, psychiatrists, psychologists, and neuroscientists. Brochures, literature, manuals, and applications will be available at the exhibit booth.

Representatives: Robin Schmidt, Tony DiGiacomo, Alesya Courtmage

**Mid-Atlantic Region of the
AMTA**

Booth 510

The Mid-Atlantic Region will have educational information available about the region and various products such as T-Shirts.

Representative: Susan Knechtel

MMB Music, Inc.

Booths 201, 203, 300, 302

MMB is a major publisher and distributor of books, videos, and recordings for the creative arts in wellness, music education, including pre-and elementary school, and parenting. MMB is the Sole USA Agent for Studio 49 Orff instruments and offers the MidiCreator sound system for physical and creative therapy. MMB Music-the complete, one stop resource for creative arts therapists. Books, videos, and recordings for the creative arts in wellness, education, and parenting will be available at the booth.

Representatives: Marcia Lee Goldberg, Norman Goldberg, Ragini Ray, Sarah Rosegrant

**Miracles Through Music
Booth 508**

Miracles through Music, Inc. is a new non-profit organization aimed at providing financial and practical support for music therapy programs in pediatric medical facilities. The organization has focused its initial efforts in the Northern California region, partnering with the University of California at Davis Children's Hospital in Sacramento. Together, the two organizations are working to conduct initial fundraising efforts, needs assessments and "best practices" compendiums. Once this phase is completed, Miracles Through Music will systematically expand its services across the nation.

Representative: Maureen M. Corr



**Music Is Elementary
Booths 200, 202, 204, 206**

Music is Elementary is a provider of Elementary Music and Music Therapy products and curricula. Music is Elementary is a provider of Orff musical instruments, Music Therapy materials, World Music and Cultural Drumming.

Representatives: Sam Marchuk, William Johnson, Ron Guzzo, Shawn Potocwar

**Music Together
Booth 312**

Music Together, the national, original research-based music and movement program for newborns through age five, was designed in 1987 to provide developmentally appropriate experiences for children with their caregivers. Music therapists have used the program for decades with all ages because the music is fun and sophisticated. Workshops, music, extensive teacher support, child safe instruments, and classroom materials will be available at the booth.

www.musictogether.com.

Representative: Ashana Lobody

**NAMM — International Music
Products Association**

Booth 313

The international music products association represents over 7, 700 member companies worldwide, including music products manufacturers, retailers, distributors, and music publishers. NAMM also houses several other organizations that help advocate the goal of expanding the market for music products; including the American Music Conference (AMC), The International Foundation for Music Research (IFME), the National Coalition for Music Education and the Museum of Making Music. Information on NAMM Services and products and Music advocacy and research will be available at the booth.

Representatives: Kim Sammons, Laura Johnson, Sharon McLaughlin

**Naropa University
Booth 213**

Naropa University offers a master's degree in Transpersonal Counseling Psychology with a concentration in Music Therapy. This degree prepares graduates for LPC licensure in Colorado and for Music Therapy

Board Certification. Naropa is located in Boulder Colorado at the foot of the Rocky Mountains and is based on a philosophy and tradition of contemplative education. University catalogs, brochures, information on the master's degree program in music therapy will be available at the exhibit booth as well as Native American Style flutes, and small hand percussion instruments.

Representatives: Laurie Rugenstein, David Rugenstein, Susan Hess

**Remo, Inc
Booths 217, 316**

Remo Inc, is a drum manufacturer whose mission and vision extends to the understanding of the important role active music making plays in therapeutic and wellness applications. A patron member and regular exhibitor, Remo sponsors the annual drum circle in addition to conference sessions and CEUs on percussion and drumming skill development and music therapy. World percussion instruments, and information on health and wellness benefits of group drumming will be available at the booth.

Representatives: Christine Stevens, Remo Belli, Ami Belli, John Parker, Brock Kaepicher

**Rhythm Fusion Inc.
Booth 516**

Rhythm Fusion –importers, makers, distributors of percussion instruments from around the world for all ages to use for self expression, communication, therapy, and spiritual work. Djembe, Darbuka, frame drums, shakers, rattlers, noisemakers, wood bells, tambourines, and more will be available at the booth.

Representatives: Dror Sinai, Monique Afenyor, Holly Blue Hawkins

**Rhythmic Medicine
Booth 304**

Rhythmic Medicine is a company, which was established in 1978 by music therapist Janalea Hoffman. We produce therapeutic music,

distribute Somatron vibroacoustic music products such as clinical recliners, and massage tables. We also offer beautiful Native American Cedar Flutes. In 2001 our new Rhythmic Medicine Center became the Midwest showroom for the Somatron Corporation. Somatron products, and native American flutes will be available at the exhibit booth.

Representatives: Janlea Hoffman, Marilyn Miller

**Saint Mary of the Woods
College**



Booth 307

Saint-Mary-of-the-Woods College offers a Master of Arts Degree in Music Therapy to qualified music therapists. Limited time on campus is required. Emphasis is on music in/as psychotherapy and the development of the therapeutic self. Bachelor's degree and Equivalency programs are also available. Brochures, pamphlets, and admissions packets will be available at the booth.

Representatives: Tracy Richardson, Meg Gray, Hope Brewer

**Sound Birthing
Booth 205**

Sound Birthing is a private music therapy agency specializing in Prenatal Music Sessions, Childbirth Classes, Labor Doula Services, and

Post-Partum Support. We offer client services, training programs for music therapists, and we do research and curriculum development. We also offer natural products that support our programs and the attachment parenting life-style. Flyers on client services and music therapy training programs, natural products, nutrition, water, massage products, therapy tools, and baby slings will be available at the booth.

Representatives: Mary P. DiCamillo, Jennifer Geiger, Cathy O'Neill

**The Sound Therapy Center of
Los Angeles - Wayne Perry
Booth 101**

The Sound Therapy Center of Los Angeles is dedicated to the education and training of individuals interested in practicing sound healing principles and techniques in their own lives and within their professional healing practices. Acclaimed sound therapist Wayne Perry, teaches classes, workshops, and seminars throughout the United States and abroad. Therapeutic music CD's, sound therapy cassette tapes and videos, laminated texts, and information on Mr. Perry's private practice and workshops at the Sound Therapy Center of Los Angeles will be available at the booth.

Representatives: Nicole Chabot, Wayne Perry, Amy Moore

**Music Therapy Organization -
Sam Houston State University
Booth 215**

Mu Tau Omega is the student organization for music therapy at



Sam Houston State University. We are committed to promoting Music Therapy in our department, on campus, and throughout the community. We will be selling Music Therapy T-shirts in all sizes, hand made drum mallets-created by our members, music therapy pens, and music therapy writing paper- in tablets. Our theme is "The Universal Cure."

Representatives: Alison Hart, Alicia Shires

Suzuki Musical Instruments

Booths 410- 416

Suzuki Musical Instruments manufactures and sells a wide variety of musical instruments for use in the classroom and home. We sell digital pianos, portable keyboards, and the new QChord. A wide variety of acoustic rhythmic percussion, and Orff instruments are also available.

Representatives: Gregory Matthews, Frank Leto

Technics Musical Instruments

Booths 407, 409

Technics Musical Instruments is a division of Panasonic Consumer Electronics Company featuring a comprehensive line of advanced electronic instruments including organs, digital pianos, digital ensembles and keyboards. The hallmark of the Technics line is extraordinarily realistic. Digital pianos, digital ensembles, and keyboards will be featured at the exhibit booth.

Representatives: Lynda Smith, Dom Cicchetti, Dan Yuter, Chris Halon

Thunder Drums

Booth 216

Thunder Drums are produced by a small company who build drums with the finest handpicked red oak and naturally treated rawhide. All of their hoops are made with a single band of Red Oak, which creates an incredible and Superior Resonance. They are the premier

drum makers to master the Art of Fine Solid Oak Hoops, both for their Plain Indian Hand Drums and their gorgeous POWWOWS. Plain Indian Drums-(Hand drums), Table Drums (Powwow), and gourd rattles will be available at the booth.

Representative: Gabriele Schwibach, Willow LaLand

University of Miami

Booth 306

The music therapy program in the School of Music at the University of Miami will be distributing information on graduate studies in music therapy. Faculty and students will be available to answer questions. Brochures and other information about graduate studies including research facilities, music therapy faculty and curriculum and admissions requirements will be available at the exhibit booth.

Representatives: Shannon de l'Etoile, Alan Reitman

West Music Company

Booths 401,403,500,502

West Music provides an eclectic blend of materials for music therapists-books, recordings, props, and instruments. On staff music therapists develop and promote adaptive materials as well as provide consultation on purchases. Remo drums of all shapes and sizes, Sonor Orff instruments, classic and modern hand percussion, adaptive instruments, activity sourcebooks, texts, songbooks, recordings, Q chords, tone chimes, and much more will be available at the booth.

Representatives: Kirsten Nelson, Lynn Doxie, Beth Villhauer, Kyle Wilhelm, Jen Koch, Kara Groen, Leslie Crockett

Western Michigan University Student Music Therapists' Association

Booth 208

Westerns Michigan University's Student Music Therapists' Association strives to inform and educate the WMU student body and surrounding communities of the benefits, validity, and services of music therapy. SMTA also aims to enhance the clinical study and practice of its members by attending professional conferences, and sponsoring guest speakers and forums. Multipurpose bags, children's T-shirts in a variety of colors and sizes, and window decals promoting music therapy will be available at the booth.

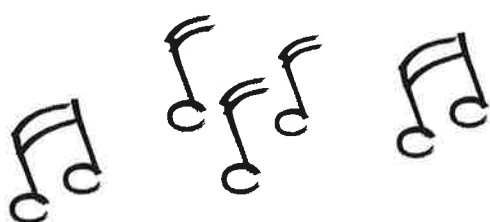
Representatives: Erin Haylett, Julie Gray, Jenna Arthurton

Western Region AMTA Students

Booth 314

The Western Region AMTA students would like to invite you to stop by and check out what is going on in our schools and communities! Tote bags, license plate holders, pens, water bottle holders, and information on our regional universities and music therapy clubs will be available at the booth.

Representatives: Karla Schwermann, Kristine Perry, Jennifer Koehler, Erin Salez





Thank You, Thank You, Thank You!

— from the Conference Chair

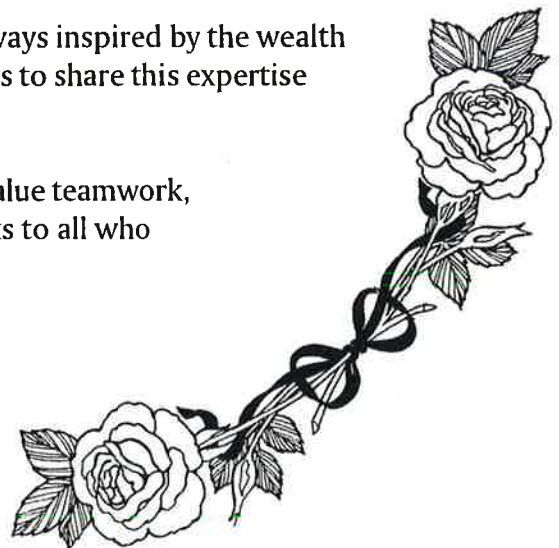
Creating a successful Conference of this size and scope is not a simple task! Many, many people have put in many, many hours to make this conference happen. I especially want to thank the Local Chair, **Ron Borczon**, MM, MT-BC for his upbeat attitude and doing a great job organizing the local committee. The individual committees headed by **Holly Baxter, Ricanne Stromoski, Lesa MacEwan, Lora Hnat, Jennifer Brown, Kasi Frey** and **Erin Salez** did a tremendous job! When you see them hard at work at this conference be sure to let them know how much they are appreciated. Their hard work and countless volunteer hours are crucial to success.

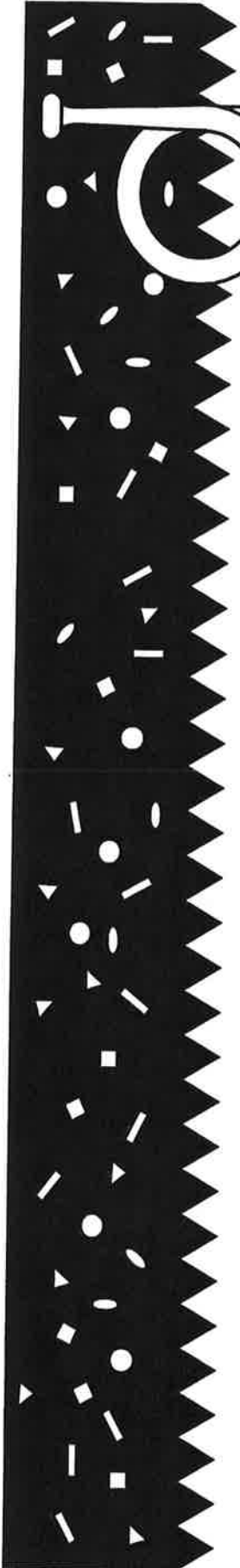
As is always the case a very big thank you goes to the national office staff. They always go above and beyond the call of duty with lots of energy and a great attitude. I have often said that they do all the hard work and the conference chair gets to take the glory! **Al Bumanis, Tami Zavislan, Judy Kaplan, Jane Creagan, Angie Elkins, Andi Farbman, Judy Simpson, Cindy Smith, Dianne Wawrzusin, and Becky Smith** are an unbelievable group of dedicated professionals who are remarkable in their abilities to makes things happen.

I also want to thank **Michelle Hairston** as Vice-President elect who has done a great job in helping and who will be your very capable VP for the next two conferences! Thanks also to abstracts editor **Lisa Kynvi** who worked tirelessly to organize the session abstracts for the final program.

A thanks also to all of you who presented! I am always inspired by the wealth of knowledge in our community and the willingness to share this expertise with others.

It has been a pleasure to work with members who value teamwork, for this conference really was a joint effort! Thanks to all who were involved.

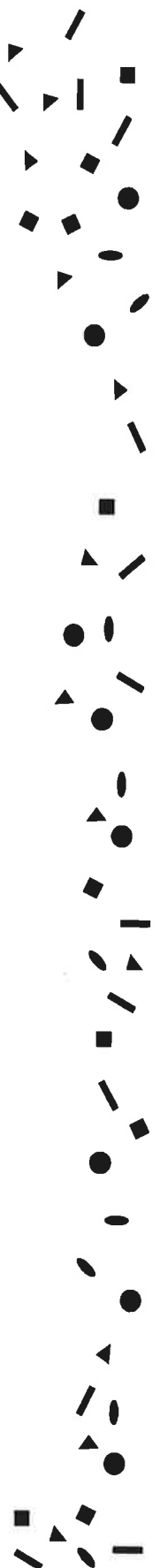




Gold Sponsor



*National
Academy of
Recording Arts
& Sciences*



CONFERENCE SPONSORS



Silver Sponsor

Yamaha Corporation of America



Bronze Sponsor

MMB Music, Inc.

Remo, Inc.



Conference Sponsor

- **Deering Banjo Company** •
- **Fender Musical Instruments** •
- **MARS Music** •
- **NAMM - International Music Products Association and American Music Conference** •
- **Technics Musical Instruments** •
- **West Music Company** •



Advertisements

TEXAS WOMAN'S UNIVERSITY

*Excellence in Music Therapy
Education for nearly half
a century*

FOR MORE INFORMATION, CONTACT:

Texas Woman's University
Department of Performing Arts
P.O. Box 425768
Denton, Texas 76204

940-898-2500

e-mail: SingSongTX@aol.com

www.twu.edu/as/pa/music/music.html

- ▶ **36 semester hour curriculum** (music therapy, music, minor electives)
- ▶ **Equivalency/graduate program** for those with undergraduate degrees in music
- ▶ **Numerous opportunities for practicum/field experiences** with highly experienced clinicians in the Dallas/Forth Worth area
- ▶ **Scholarship opportunities** available

Eminent Faculty

Distinguished music therapy faculty members serve on boards and committees for AMTA and CBMT, publish in music therapy and related journals, present scholarly and clinical work at professional conferences and promote the field of music therapy through legislative/regulatory activities.

The faculty includes:

Nancy Hadsell, Ph.D., MT-BC.,
Music Therapy Coordinator
Nickie Cohen, Ph.D., MT-BC, FAMI
Joseph Pinson, MA, MT-BC

Share The Music Enjoy Life

Lowrey Organ Company, the number one selling home organ in America, shares a common bond with the Music Therapy profession. At Lowrey, our goal is to improve the quality of peoples lives through music. The Lowrey "Wellness Enhanced" Organ Course, designed to develop adult hobby players, lets people discover the joy and satisfaction of making their own music. Lowrey Magic seamlessly incorporates wellness activities from the Six Minute Modulesm, which was developed by Music Therapy professionals.

The combination of Lowrey's easy-and-fun-to-play product design, the Lowrey Magic Organ Course, and the wellness benefits associated with making music create a tremendous opportunity to make life better.

LOWREY
Organ Company

sm six minute module **NAMM**

825 East 26th Street, LaGrange Park, Illinois 60526 Phone 708.352.3388 Fax 708.352.3464, <http://www.lowrey.com>

help is just a call away



MusiCares

Northeastern Region

1(877)303-6962

Central Region

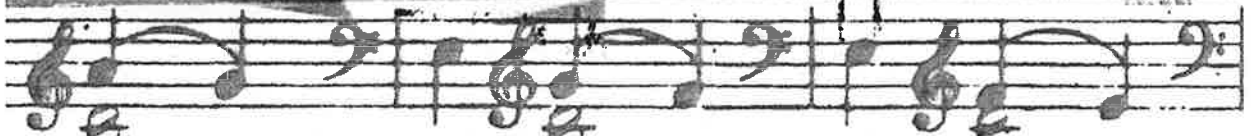
1(877)626-2748

Western Region

1(800)687-4227

Total Confidentiality
Emergency Financial Assistance
Health Care Referrals
Addiction Recovery
Immediate Crisis Intervention
24 Hours a Day

Please visit us at GRAMMY.com



The best medicine doesn't always come from a bottle.

health
rhythms

Drumming brings together powerful, health-promoting activities that lift people up, raise their spirits and even produce potential immune system changes. In this way, Remo's *HealthRHYTHMS* helps people feel happier, healthier and generally on top in body, mind and spirit.



ON TOP™

remo.com 28101 Industry Drive, Valencia, CA 91355

COME EXPERIENCE *HealthRHYTHMS* FOR YOURSELF BY JAMMING WITH US AT REMO'S AMTA SESSIONS:

Leon Mobley *West African Session*, Friday 8 a.m.–9:30 a.m. Lynn Kleiner *Kids Make Music Session*, Friday 9:45 a.m.–11:45 a.m.

Barbara Crowe *Drumming with At-Risk Adolescents* Saturday 10:45 a.m.–12:15 p.m.

Deborah Bradway *Drumming with At-Risk Adolescents* Saturday 1:30 p.m.–3:30 p.m. *Evening Drum Circle*, Saturday 7:30 p.m.–9 p.m.

*In recognition
of the healing that music brings
to those affected
by the tragic events
of September 11, 2001*

*we offer our
gratitude, prayers and support
to all*

The Mid-Atlantic Region of AMTA

Looking for a Job?

The AMTA Job
Opportunities
Listing can now
be found on the
member area of
the AMTA
website. New
jobs are added
regularly!



Visit www.musictherapy.org



**UNIVERSITY OF THE
INCARNATE WORD**
THE UNIVERSE IS YOURS.

**Bachelor of Music
in Music Therapy
Master of Arts
in Multidisciplinary Studies
of Music Therapy**

*The only Music Therapy Program
in South Texas*

For More Information, contact
Janice Dvorkin, Psy.D. ACMT
(210) 829-3856
dvorkin@universe.uiwtx.edu

University of the Incarnate Word

The University of Wisconsin Oshkosh

*Announces the Appointment
of
David W. Luce, Ph. D., MT-BC
as
Coordinator of Music Therapy*

DUQUESNE UNIVERSITY MARY PAPPERT SCHOOL OF MUSIC

Education for the Mind, the Heart and the Soul

Distinguished Faculty

Sr. Donna Marie Beck, Ph.D., FAMI, MT-BC

Linda Sanders, MRE, MT-BC

Sr. Charleen Pavlik, Ph.D., LSW, MT-BC



For more information, please contact:

Sr. Donna Marie Beck, Ph.D., FAMI, MT-BC

**Mary Pappert School of Music
Music Therapy Department**

**Duquesne University
600 Forbes Avenue
Pittsburgh, PA 15282**



**DUQUESNE
UNIVERSITY**



Since 1944, Professional Careers in Music Therapy start here!

Degrees Offered:
Bachelor of Music
Music Therapy

Master of Music
Music Therapy

Doctor of Philosophy
Music Education
(Music Therapy
Cognate)

Music Therapy
Faculty:

Dr. Frederick Tims,
MT-BC, Chair,
Professor

Roger Smeltekop,
MT-BC, Coordinator
of Music Therapy
Clinic, Associate
Professor

Cindy Lu Edgerton,
MT-BC, Co-Director,
Community Music
School Music Therapy
Clinical Services

The School of Music at Michigan State University has a unique position in the history of the music therapy profession:

Our program, established in 1944, was the first of its kind in the world designed specifically to train music therapists.

Music Therapy education at MSU provides a program of distinction that is knowledge-based, clinically driven, and tested by research. The program is designed to provide an environment that nurtures growth in students' lives at the intellectual, emotional, physical, and spiritual levels, while promoting excellence in music therapy practice and the development of new knowledge.

We recognize the potential of music therapy as a healing force for individuals, groups, and society, and emphasize the importance of creativity and innovation as essential elements of music therapy practice and research.

Office of Admissions, School of Music, Michigan State University, East Lansing, MI 48824-1043
517/355-2140 • fax: 517/432-2880 • email: tims@msu.edu • www.music.msu.edu



MASTER OF ARTS IN MUSIC THERAPY

- Advanced coursework includes Psychophysiology and Music Medicine, Guided Imagery and Music, and Advanced Improvisation and Composition
- Emphasis on understanding theories of Music Therapy, Counseling and Psychopathology
- Distance Learning Format; Limited Time on Campus

The program welcomes qualified music therapists who seek a distance learning format to enhance their personal or professional interests in Music Therapy.

SMWC also offers an undergraduate degree and an equivalency program in music therapy.

SAINT MARY-*of-the-*
WOODS COLLEGE

SAINT MARY-OF-THE-WOODS, IN 47876

812-535-5154 • www.smwc.edu • email: mamt@smwc.edu



Enrich Your Life and the Lives of Others

**Expressive Therapies Program
offerings in Cambridge, MA**

Transform your talents for art and working with people into professional skills. The Expressive Therapies Program will prepare you to become a therapist who integrates art, dance, music, psychodrama, storytelling, and poetry with the practice of psychotherapy.

These programs emphasize the connection between the arts, teaching, and clinical training. They have been designed to meet the educational guidelines of the American Art Therapy Association, the American Dance Therapy Association and the International Expressive Arts Therapies Association, the American Music Therapy Association.

Master of Arts in Expressive Therapies Specializations in

Art Therapy
Dance Therapy
Expressive Therapy
Music Therapy
Mental Health Counseling
(Eligible for Licensed Mental Health Counselor)

**Certificate of Advanced Graduate Study
Ph.D. in Expressive Therapies**

For more information:
(800) 999-1959 ext. 8300
info@lesley.edu
www.lesley.edu



LESLEY

Lesley University
Inspiring Excellence in Education

MUSIC THERAPY

School of the Arts
Department of Music

ONE OF THE OLDEST AND FOREMOST TRAINING PROGRAMS IN THE COUNTRY



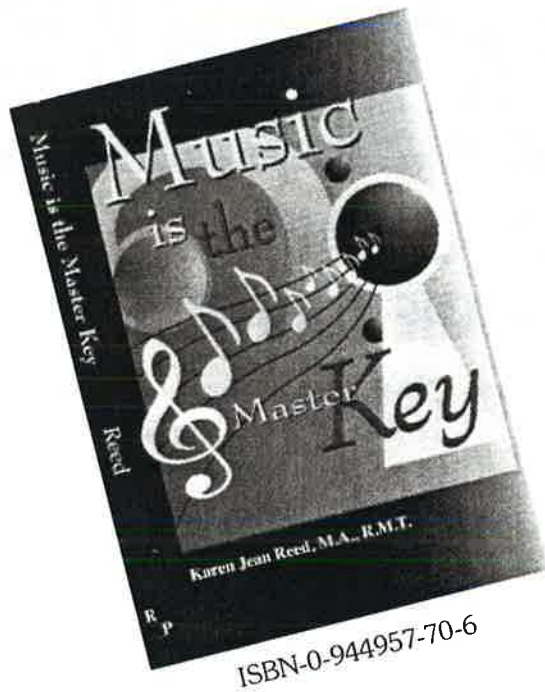
Celebrating 33 years of excellence
in training Music therapists, offers:

- ◆ Undergraduate, certification and graduate programs
- ◆ Closely supervised clinical work each semester
- ◆ Music Therapy Training Groups
- ◆ Frequent presentations and workshops by guest clinicians (from the U.S. and other countries)
- ◆ The only competitively priced undergraduate and graduate program in the tri-state Metropolitan NYC area.
- ◆ For further information regarding faculty, program requirements and audition applications, visit our web site at www.montclair.edu or call 973-655-5268

Feel free to contact:
Karen Goodman at
goodmank@mail.montclair.edu

Montclair State University ◆ Upper Montclair, NJ 07043

Thought Provoking Powerful



Karen Jean Reed, MA, RMT
Author - Evangelist - Gospel Saxophonist
Registered Music Therapist

Retail Price \$18.95

The long awaited release of this thought provoking book from Author Karen Jean Reed can be a valuable guide for those seeking to increase their awareness of Music Therapy. It is an excellent resource to improve your knowledge of Music Therapy in treatment of psychiatric disorders.

Available at your local bookstore or for more information, please call

1-800-451-4522

Rivercross Publishing, Inc.

6214 Wynfield Court

Orlando, FL 32819

E-Mail: info@rivercross.com

New Dimensions *in* Sound Healing™

“Steven Halpern is a musical magician, a healer with sound. His music has helped millions experience transformative moments that lead to greater wholeness and happiness.

“Music is one of the most powerful forces available to humans, and Halpern wields this medium with immense skill.”

— LARRY DOSSEY, MD, author of *Reinventing Medicine and Healing Words*

MUSIC for SOUND HEALING



IPM 7878

The definitive collection, specially sequenced to enhance the healing effect. Keyboards, flute, harp, angelic choir.

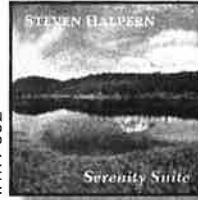
RECOLLECTIONS



IPM 7823

Stimulate memories and emotions with these favorites: *Greensleeves*, *Brahms' Lullaby*, many more. Violin and piano.

SERENITY SUITE



IPM 7862

The sounds of nature (songbirds, lake and mountain stream) amplify the nurturing effects of the music.

CHAKRA SUITE



IPM 8000

Sonically resonates and tunes the chakras. Expands and improves upon *SPECTRUM SUITE*, the award-winning classic in the field.

STEVEN HALPERN'S Sound Health™ series belongs in your library:

- ◆ Proven to evoke the “relaxation response” and reduce stress for over 95% of listeners
- ◆ Evokes *alpha* waves; orchestrates higher order coherence
- ◆ Supports feelings of peace, joy and well-being
- ◆ Recommended by Dr. Barbara Crowe, Dr. Charles Eagle, Dr. Helen Bonny; many more



STEVEN HALPERN is an internationally-acclaimed recording artist, author, and sound healer. As an educator, he has taught theory and practice of sound healing and improvisation since 1970. He has sold over 4 million albums and produced 60 recordings which are used in homes, hospitals, hospices, schools, and business offices around the world.

Halpern was a featured speaker at the Sixth International Conference on Stress in Switzerland, the American Massage Therapy Association (2000) and the International Science and Consciousness conferences (1999, 2000 and 2001). He is currently conducting landmark biofeedback research, comparing classical and contemporary compositions for their healing potential.

If you're a music therapist, STEVEN HALPERN'S INNER PEACE MUSIC® belongs in your healing sound library. We look forward to working with you.

Professional Courtesy Discount: Buy 3–Get 1 FREE!

We also offer wholesale terms for resale to hospitals, clinics, schools and therapists
Order today ◆ 1-800-909-0707 (Dep't. MUS) ◆ Or call for free color catalog

Hear audio samples: www.innerpeacemusic.com



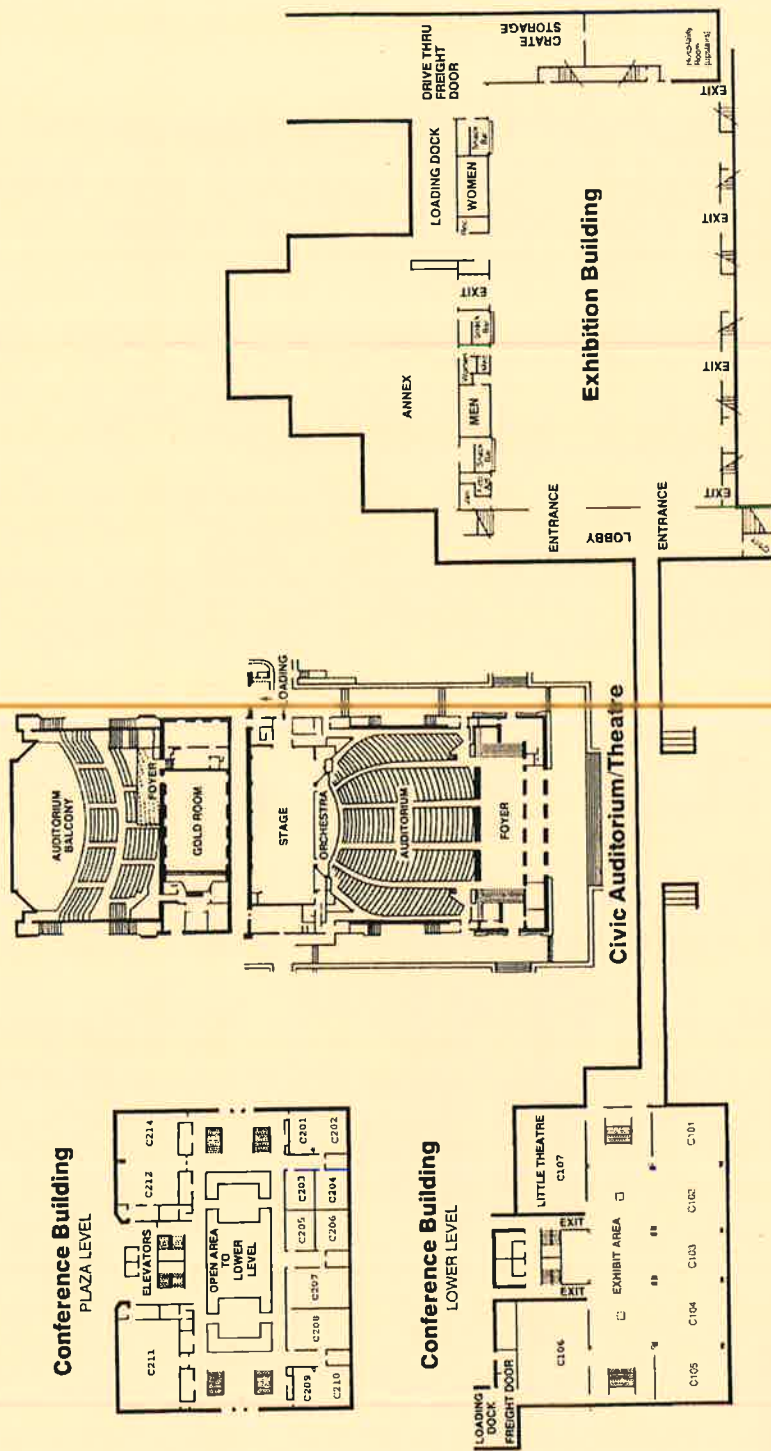
Remember!

Standard Time begins Sunday, October 28.



Don't forget to set your clocks back one hour before you go to bed on Saturday and get an extra hour of sleep Sunday morning! Session times on Sunday reflect Pacific Standard Time.

Pasadena Conference Center Map



Exhibition Building

AREA	MEETING CAPACITY	DIMEN- SIONS	SQARE FEET	CEILING HEIGHT	BOOTH CAPACITY
Exhibit Area	4400	130 x 240	31,200	25'	210 8'x10' or 195-1
Lobby		30 x 128	3,840	17'	
Hospitality Room	200	36 x 42	1,512	9'	
Annex	600		13,000	9'	70 8'x10' or 60-10x

Civic Auditorium: Theatre

AREA	MEETING CAPACITY	DIMEN- SIONS	CEILING HEIGHT
THEATRE	400	40x110	7x
STAGE	250		7x
GOLD ROOM	400	43x73	2x

Conference Building

Upper Level
 3 Meeting rooms with seating from 50 to 200 theatre style

Lower Level
 7 Meeting rooms with seating for 150 to 1,000 theatre style
 1 Exhibit area
 1 Exhibit space connected to the Exhibition Building through an underground concourse. Banquets from 100 to 1,000.

*All session rooms are in the Conference Center unless otherwise noted on the session schedule (e.g. Sheraton - Colorado will be held in the Colorado Room of the Sheraton Hotel)

Spend a chilling Halloween with us

at the

4th Annual AMTA Conference

October 30 — November 3, 2002

Atlanta, Georgia

Atlanta Hilton Hotel

"Music Therapy on my Mind"

American Music Therapy Association

8455 Colesville Road
Suite 1000
Silver Spring, MD
20910



AMERICAN
MUSIC
THERAPY
ASSOCIATION

tel: 301.589.3300
fax: 301.589.5175



email: info@musictherapy.org
website: www.musictherapy.org